

Converting Colors

Decimal(13408911)

Have a look what the booklet for
Decimal(13408911) contains.

Decimal(13408911)	3
<i>Conversions</i>	4
<i>Details</i>	6
<i>Harmonies</i>	11
<i>Previews</i>	23
<i>Color Blindness Simulation</i>	26
<i>CSS Examples</i>	29

Color

Decimal(13408911)

Conversions

Conversions Part 1

Format	Color
Hex	CC9A8F
RGB	204, 154, 143
RGB Percent	80%, 60%, 56%
CMY	0.2000, 0.3961, 0.4392
CMYK	0.00, 0.25, 0.30, 0.20
HSL	11°, 37%, 68%
HSV	11°, 30%, 80%
XYZ	41.4154, 37.9317, 31.1253
YIQ	167.6960, 33.3310, 7.1790

Conversions

Conversions Part 2

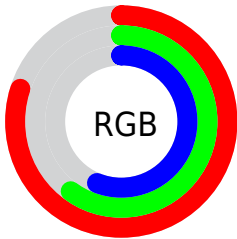
Format	Color
RYB	204, 156, 143
Decimal	13408911
CIELab	67.97, 17.12, 13.03
CIELCh	68, 21.514, 37.266
Yxy	37.9317, 0.3749, 0.3434
Android (android.graphics.Color)	4291598991 (0xFFCC9A8F)
YUV	167.6960, -12.1751, 31.8386
Hunter-Lab	61.5888, 12.2520, 13.1485

Details

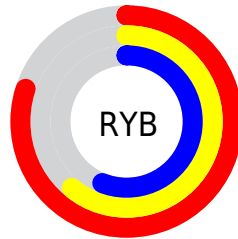
The Decimal color **13408911** is a light color, and the websafe version is hex **CC9999**. A complement of this color would be **9421260**, and the grayscale version is **11053224**.

A 20% lighter version of the original color is **16765381**, and **9791325** is the 20% darker color. If you saturate the color by 10%, you get **13404539**, and if you desaturate by 10%, it is **13413283**.

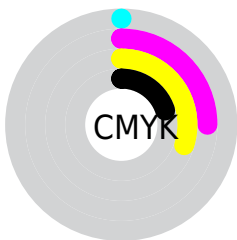
Distribution



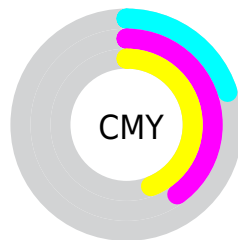
- Red (80%)
- Green (60%)
- Blue (56%)



- Red (80%)
- Yellow (61%)
- Blue (56%)



- Cyan (0%)
- Magenta (25%)
- Yellow (30%)
- Black (20%)



- Cyan (20%)
- Magenta (40%)
- Yellow (44%)

Brightness & Saturation Gradients

These gradients show how the Decimal color 13408911 changes by changing the brightness by 10 percent. The first figure shows a shift by +10% for each color and the second figure -10%.

Similar to the brightness gradients but the following saturation gradients show a change of the Decimal color 13408911 by changing the saturation by 10% instead.

 13408911

 13408911

16777215

 11567221

 16765381

 9791325

 16772577

 8015429

16777213

 6305583

 4661530

 3148800

 1245184

 0

 13408911

 13408911

 13404539

 13413283

 13400422

 13417400

 13396050

 13421772

 13391677

 13426145

 13387305

 13430517

 13383189

 13434623

 13378816

 13434879

Harmonies

Analogous

The Analogous color harmony consists of three colors that are next to each other on the color wheel.



13473954



13408911



12689282

Triad

The Triadic color harmony groups three colors that are evenly spaced from another and form a triangle on the color wheel.



13408911



8695702



9807564

Complementary

The Complementary color scheme is a pair of colors which are on the opposite of each other on the color wheel.



13408911



9421260

Split Complementary

Split-complementary colors differ from the complementary color scheme. The scheme consists of three colors, the original color and two neighbors of the complement color.



8236233



13408911



7582122

Square

The Square scheme is like the rectangle color scheme, but the four colors are evenly spaced on the color wheel.



13408911



10136710



7385276



11509701

Rectangle

The Rectangle color scheme consists of four colors that form a rectangle on the color wheel.



13408911



11969663



7385276



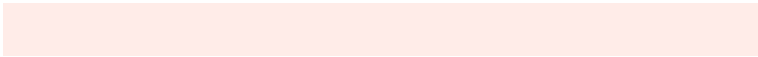
9218252

Sweetspot

The Sweet Spot groups the original color and five complimentary colors.



13408911



16772328



13406146



8418417



0



8421504

Same Dimension

The Same Dimension uses a secret algorithm to generate beautiful new colors.



13408911



16757923



13416591



6708828



10886656



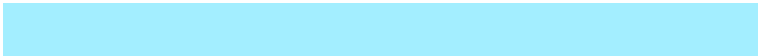
2492160

Inverse Universe

The Inverse Universe completely reimagines the original color for something new.



9421260



10743551



9413580



6055014



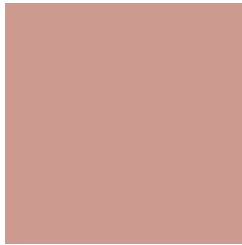
34982



7974

Previews

White Background



This preview shows how the Decimal color 13408911 looks on a white background.

Color Contrast Check

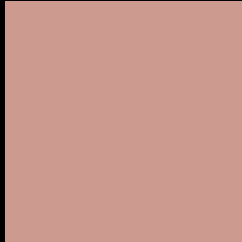
Large Text (above 18pt) WCAG AA × Fail

Any Text WCAG AA × Fail

Large Text (above 18pt) WCAG AAA × Fail

Any Text WCAG AAA × Fail

Black Background



This preview shows how the Decimal color 13408911 looks on a black background.

Color Contrast Check

Large Text (above 18pt) WCAG AA ✓ Pass

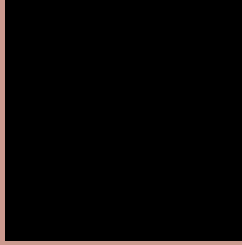
Any Text WCAG AA ✓ Pass

Large Text (above 18pt) WCAG AAA ✓ Pass

Any Text WCAG AAA ✓ Pass

If you want to check with other color combinations, try the [Color Contrast Checker](#).

Decimal 13408911 Background



This preview shows how black text looks on a background with the Decimal color 13408911.




This preview shows how white text looks on a background with the Decimal color 13408911.

Color Blindness Simulation

Color vision deficiency is a very complex topic, and I could not describe the different causes any better than Wikipedia does, so if you want to learn more, you should check out their [article about color blindness](#).

Dichromacy





Tritanopia
13539235

Trichromacy



Original Color
13408911

Protanomaly
12099987

Deuteranomaly
12820110

Tritanomaly
13473948

Monochromacy



Original Color
13408911

Achromatopsia
11053224

Achromatomaly
11903903

CSS Examples

Text

The CSS property to change the color of the text to Decimal 13408911 is called "color". The color property can be set on classes, ids or directly on the HTML element.

This example shows how text in the color #CC9A8F looks like.

```
.text, #text, p{  
    color:#CC9A8F  
}
```

If you want to add a text shadow in that color use the text-shadow property, you can generate a text shadow directly with our [CSS Text Shadow Generator](#).

Here you see how black text with a 4 pixel #CC9A8F colored shadow looks like.

```
.shadow{ text-shadow: 4px 4px 2px #CC9A8F
}
```

Border

The CSS property to change the border of an element to Decimal 13408911 is called "border". The border property can be set on classes, ids or directly on the HTML element.

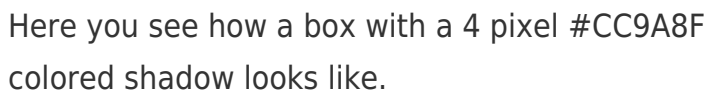
This example shows the color as border, it can be applied via the CSS property "border" or "border-color".

```
.border, #border, table{ border:4px solid
#CC9A8F }
```

If only the border color should be changed use the property `border-color`.

```
.border{ border-color:#CC9A8F }
```

If you want to add a box shadow in that color use:



Here you see how a box with a 4 pixel #CC9A8F colored shadow looks like.

```
.boxshadow{ -moz-box-shadow:4px 4px 4px  
4px #CC9A8F; -webkit-box-shadow:4px 4px  
4px 4px #CC9A8F; box-shadow:4px 4px 4px  
4px #CC9A8F }
```

Background

The CSS property to change the background color of an element to Decimal 13408911 is called "background". The background property can be set on classes, ids or directly on the HTML element.

```
.background, #background, body{  
background:#CC9A8F }
```

If only the background color should be changed can be used:

```
.background{ background-color:#CC9A8F }
```

This example shows the color as background, it is applied via the CSS property "background".

To optimize and compress your CSS code, you can use our [online CSS compressor and optimizer](#) based on csstidy. If you want to create a linear or radial gradient as background or border, check our [CSS Gradient Generator](#).

Hey! You found this booklet interesting? Support Converting Colors with the new Membership Option!

The pro membership hides all ads, plus gives you double the colors in the color bucket, and more awesome pro features!

[Learn more, Memberships starting at \\$2.50/m!](#)

**Follow me
on Twitter!**

@ConvertingColor