

Converting Colors

Decimal(13411238)

Have a look what the booklet for
Decimal(13411238) contains.

Decimal(13411238)	3
<i>Conversions</i>	4
<i>Details</i>	6
<i>Harmonies</i>	11
<i>Previews</i>	23
<i>Color Blindness Simulation</i>	26
<i>CSS Examples</i>	29

Color

Decimal(13411238)

Conversions

Conversions Part 1

Format	Color
Hex	CCA3A6
RGB	204, 163, 166
RGB Percent	80%, 64%, 65%
CMY	0.2000, 0.3608, 0.3490
CMYK	0.00, 0.20, 0.19, 0.20
HSL	356°, 29%, 72%
HSV	356°, 20%, 80%
XYZ	44.8820, 41.7849, 41.7762
YIQ	175.6010, 23.4730, 9.6250

Conversions

Conversions Part 2

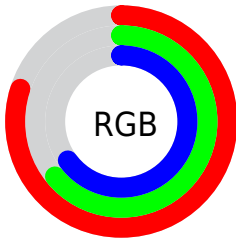
Format	Color
RYB	204, 163, 166
Decimal	13411238
CIELab	70.72, 15.55, 4.19
CIELCh	71, 16.109, 15.085
Yxy	41.7849, 0.3494, 0.3253
Android (android.graphics.Color)	4291601318 (0xFFCCA3A6)
YUV	175.6010, -4.7333, 24.9059
Hunter-Lab	64.6413, 10.8146, 6.9311

Details

The Decimal color **13411238** is a light color, and the websafe version is hex **CC9999**. A complement of this color would be **10734793**, and the grayscale version is **11579568**.

A 20% lighter version of the original color is **16767709**, and **9793394** is the 20% darker color. If you saturate the color by 10%, you get **13406099**, and if you desaturate by 10%, it is **13416377**.

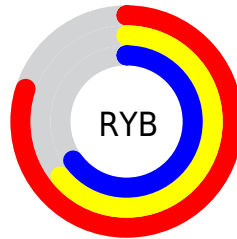
Distribution



Red (80%)

Green (64%)

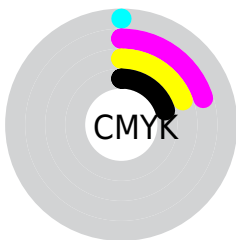
Blue (65%)



Red (80%)

Yellow (64%)

Blue (65%)

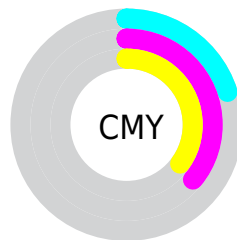


Cyan (0%)

Magenta (20%)

Yellow (19%)

Black (20%)



Cyan (20%)

Magenta (36%)

Yellow (35%)

Brightness & Saturation Gradients

These gradients show how the Decimal color 13411238 changes by changing the brightness by 10 percent. The first figure shows a shift by +10% for each color and the second figure -10%.

Similar to the brightness gradients but the following saturation gradients show a change of the Decimal color 13411238 by changing the saturation by 10% instead.

 13411238

 13411238

16777215

 11569548

 16767709

 9793394

 16775162

 8083290

 6438722

 4794668

 3216408

 2031616

 0

 13411238

 13411238

 13406099

 13416377

 13400704

 13421772

 13395565

 13426911

 13390170

 13432306

 13385031

 13434879

 13379893

 13374498

 13369359

Harmonies

Analogous

The Analogous color harmony consists of three colors that are next to each other on the color wheel.



13018293



13411238



13215129

Triad

The Triadic color harmony groups three colors that are evenly spaced from another and form a triangle on the color wheel.



13411238



10531736



9744841

Complementary

The Complementary color scheme is a pair of colors which are on the opposite of each other on the color wheel.



13411238



10734793

Split Complementary

Split-complementary colors differ from the complementary color scheme. The scheme consists of three colors, the original color and two neighbors of the complement color.



8959169



13411238



9549221

Square

The Square scheme is like the rectangle color scheme, but the four colors are evenly spaced on the color wheel.



13411238



11644561



8894132



10923209

Rectangle

The Rectangle color scheme consists of four colors that form a rectangle on the color wheel.



13411238



12888211



8894132



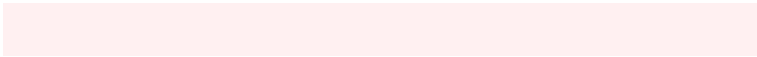
9417415

Sweetspot

The Sweet Spot groups the original color and five complimentary colors.



13411238



16773361



13214668



8419191



0



8421504

Same Dimension

The Same Dimension uses a secret algorithm to generate beautiful new colors.



13411238



16761542



13415587



6708317



10878988



2490371

Inverse Universe

The Inverse Universe completely reimagines the original color for something new.



13411238



16761542



10730444



6708317



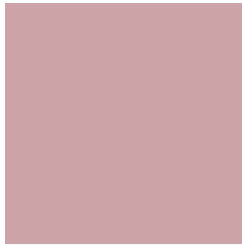
10878988



2490371

Previews

White Background



This preview shows how the Decimal color 13411238 looks on a white background.

Color Contrast Check

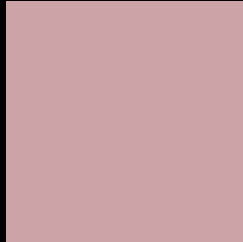
Large Text (above 18pt) WCAG AA × Fail

Any Text WCAG AA × Fail

Large Text (above 18pt) WCAG AAA × Fail

Any Text WCAG AAA × Fail

Black Background



This preview shows how the Decimal color 13411238 looks on a black background.

Color Contrast Check

Large Text (above 18pt) WCAG AA ✓ Pass

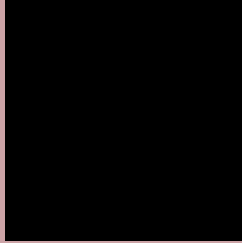
Any Text WCAG AA ✓ Pass

Large Text (above 18pt) WCAG AAA ✓ Pass

Any Text WCAG AAA ✓ Pass

If you want to check with other color combinations, try the [Color Contrast Checker](#).

Decimal 13411238 Background



This preview shows how black text looks on a background with the Decimal color 13411238.



This preview shows how white text looks on a background with the Decimal color 13411238.

Color Blindness Simulation

Color vision deficiency is a very complex topic, and I could not describe the different causes any better than Wikipedia does, so if you want to learn more, you should check out their [article about color blindness](#).

Dichromacy



Original Color
13411238

Protanopia
11644075

Deuteranopia
12691365



Tritanopia
13476526

Trichromacy



Original Color
13411238

Protanomaly
12298665

Deuteranomaly
12953253

Tritanomaly
13476523

Monochromacy



Original Color
13411238

Achromatopsia
11579568

Achromatomaly
12233644

CSS Examples

Text

The CSS property to change the color of the text to Decimal 13411238 is called "color". The color property can be set on classes, ids or directly on the HTML element.

This example shows how text in the color #CCA3A6 looks like.

```
.text, #text, p{  
  color:#CCA3A6  
}
```

If you want to add a text shadow in that color use the text-shadow property, you can generate a text shadow directly with our [CSS Text Shadow Generator](#).

Here you see how black text with a 4 pixel #CCA3A6 colored shadow looks like.

```
.shadow{ text-shadow: 4px 4px 2px #CCA3A6
}
```

Border

The CSS property to change the border of an element to Decimal 13411238 is called "border". The border property can be set on classes, ids or directly on the HTML element.

This example shows the color as border, it can be applied via the CSS property "border" or "border-color".

```
.border, #border, table{ border:4px solid
#CCA3A6 }
```

If only the border color should be changed use the property `border-color`.

```
.border{ border-color:#CCA3A6 }
```

If you want to add a box shadow in that color use:

Here you see how a box with a 4 pixel #CCA3A6 colored shadow looks like.

```
.boxshadow{ -moz-box-shadow:4px 4px 4px  
4px #CCA3A6; -webkit-box-shadow:4px 4px  
4px 4px #CCA3A6; box-shadow:4px 4px 4px  
4px #CCA3A6 }
```

Background

The CSS property to change the background color of an element to Decimal 13411238 is called "background". The background property can be set on classes, ids or directly on the HTML element.

```
.background, #background, body{  
background:#CCA3A6 }
```

If only the background color should be changed can be used:

```
.background{ background-color:#CCA3A6 }
```

This example shows the color as background, it is applied via the CSS property "background".

To optimize and compress your CSS code, you can use our [online CSS compressor and optimizer](#) based on csstidy. If you want to create a linear or radial gradient as background or border, check our [CSS Gradient Generator](#).

Hey! You found this booklet interesting? Support Converting Colors with the new Membership Option!

The pro membership hides all ads, plus gives you double the colors in the color bucket, and more awesome pro features!

[Learn more, Memberships starting at \\$2.50/m!](#)

**Follow me
on Twitter!**

@ConvertingColor