

# Converting Colors

Decimal(13412256)

Have a look what the booklet for  
Decimal(13412256) contains.

<b>Decimal(13412256)</b> .....	3
<i><b>Conversions</b></i> .....	4
<i><b>Details</b></i> .....	6
<i><b>Harmonies</b></i> .....	11
<i><b>Previews</b></i> .....	23
<i><b>Color Blindness Simulation</b></i> .....	26
<i><b>CSS Examples</b></i> .....	29

# **Color**

**Decimal(13412256)**

# Conversions

## Conversions Part 1

<b>Format</b>	<b>Color</b>
Hex	CCA7A0
RGB	204, 167, 160
RGB Percent	80%, 65%, 63%
CMY	0.2000, 0.3451, 0.3725
CMYK	0.00, 0.18, 0.22, 0.20
HSL	10°, 30%, 71%
HSV	10°, 22%, 80%
XYZ	45.0657, 43.0129, 39.1848
YIQ	177.2650, 24.2990, 5.6670

# Conversions

## Conversions Part 2

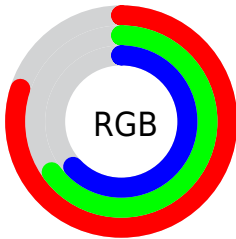
Format	Color
<a href="#">RYB</a>	<a href="#">204, 168, 160</a>
Decimal	<a href="#">13412256</a>
CIELab	<a href="#">71.56, 12.46, 8.71</a>
CIElCh	<a href="#">72, 15.202, 34.966</a>
Yxy	<a href="#">43.0129, 0.3541, 0.3380</a>
Android (android.graphics.Color)	<a href="#">4291602336</a> <a href="#">(0xFFCCA7A0)</a>
YUV	<a href="#">177.2650, -8.5116, 23.4466</a>
Hunter-Lab	<a href="#">65.5842, 7.8827, 10.4848</a>

# Details

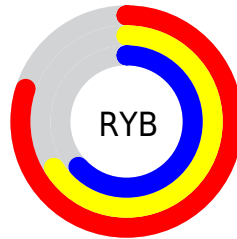
The Decimal color **13412256** is a light color, and the websafe version is hex **CC9999**. A complement of this color would be **10536396**, and the grayscale version is **11645361**.

A 20% lighter version of the original color is **16768727**, and **9794413** is the 20% darker color. If you saturate the color by 10%, you get **13407884**, and if you desaturate by 10%, it is **13416628**.

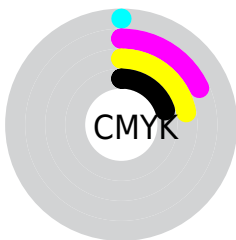
# Distribution



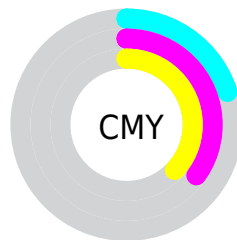
- Red (80%)
- Green (65%)
- Blue (63%)



- Red (80%)
- Yellow (66%)
- Blue (63%)



- Cyan (0%)
- Magenta (18%)
- Yellow (22%)
- Black (20%)



- Cyan (20%)
- Magenta (35%)
- Yellow (37%)

# Brightness & Saturation Gradients

These gradients show how the Decimal color 13412256 changes by changing the brightness by 10 percent. The first figure shows a shift by +10% for each color and the second figure -10%.

Similar to the brightness gradients but the following saturation gradients show a change of the Decimal color 13412256 by changing the saturation by 10% instead.



 13412256

 13412256

16777215

 11570566

 16768727

 9794413

 16776179

 8084052

 6374205

 4795431

 3217171

 1900544

 0

 13412256

 13412256

 13407884

 13416628

 13403511

 13421001

 13399139

 13425373

 13394510

 13430002

 13390138

 13434367

 13385766

 13434879

 13381393

 13377536

# Harmonies

## Analogous

The Analogous color harmony consists of three colors that are next to each other on the color wheel.



13412013



13412256



12954519

# Triad

The Triadic color harmony groups three colors that are evenly spaced from another and form a triangle on the color wheel.



13412256



10073763



10727627

# Complementary

The Complementary color scheme is a pair of colors which are on the opposite of each other on the color wheel.



13412256



10536396

# Split Complementary

Split-complementary colors differ from the complementary color scheme. The scheme consists of three colors, the original color and two neighbors of the complement color.



9680072



13412256



9353393

# Square

The Square scheme is like the rectangle color scheme, but the four colors are evenly spaced on the color wheel.



13412256



11056024



9222079



11905990

# Rectangle

The Rectangle color scheme consists of four colors that form a rectangle on the color wheel.



13412256



12430996



9222079



10334667



# Sweetspot

The Sweet Spot groups the original color and five complimentary colors.



13412256



16773872



13410501



8419447



0



8421504



# Same Dimension

The Same Dimension uses a secret algorithm to generate beautiful new colors.



13412256



16762813



13417888



6708572



10885632



2491904



# Inverse Universe

The Inverse Universe completely reimagines the original color for something new.



10536396



12449023



10530764



6055014



35750



8230



# Previews

## White Background



This preview shows how the Decimal color 13412256 looks on a white background.

## Color Contrast Check

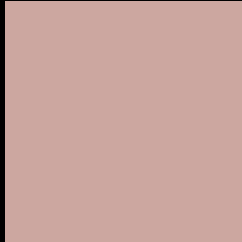
Large Text (above 18pt) WCAG AA × Fail

Any Text WCAG AA × Fail

Large Text (above 18pt) WCAG AAA × Fail

Any Text WCAG AAA × Fail

# Black Background



This preview shows how the Decimal color 13412256 looks on a black background.

## Color Contrast Check

Large Text (above 18pt) WCAG AA ✓ Pass

Any Text WCAG AA ✓ Pass

Large Text (above 18pt) WCAG AAA ✓ Pass

Any Text WCAG AAA ✓ Pass

If you want to check with other color combinations, try the [Color Contrast Checker](#).



## Decimal 13412256 Background



This preview shows how black text looks on a background with the Decimal color 13412256.



This preview shows how white text looks on a background with the Decimal color 13412256.

# Color Blindness Simulation

Color vision deficiency is a very complex topic, and I could not describe the different causes any better than Wikipedia does, so if you want to learn more, you should check out their [article about color blindness](#).

## Dichromacy





**Tritanopia**  
13542577

# Trichromacy



**Original Color**  
13412256

**Protanomaly**  
12430499

**Deuteranomaly**  
13150368

**Tritanomaly**  
13477291

# Monochromacy



**Original Color**  
13412256

**Achromatopsia**  
11645361

**Achromatomaly**  
12299691

# CSS Examples

## Text

The CSS property to change the color of the text to Decimal 13412256 is called "color". The color property can be set on classes, ids or directly on the HTML element.

This example shows how text in the color #CCA7A0 looks like.

```
.text, #text, p{  
  color:#CCA7A0  
}
```

If you want to add a text shadow in that color use the text-shadow property, you can generate a text shadow directly with our [CSS Text Shadow Generator](#).

Here you see how black text with a 4 pixel #CCA7A0 colored shadow looks like.

```
.shadow{ text-shadow: 4px 4px 2px #CCA7A0
}
```

## Border

The CSS property to change the border of an element to Decimal 13412256 is called "border". The border property can be set on classes, ids or directly on the HTML element.

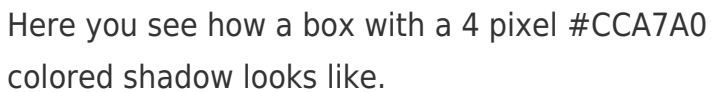
This example shows the color as border, it can be applied via the CSS property "border" or "border-color".

```
.border, #border, table{ border:4px solid
#CCA7A0 }
```

If only the border color should be changed use the property `border-color`.

```
.border{ border-color:#CCA7A0 }
```

If you want to add a box shadow in that color use:



Here you see how a box with a 4 pixel #CCA7A0 colored shadow looks like.

```
.boxshadow{ -moz-box-shadow:4px 4px 4px  
4px #CCA7A0; -webkit-box-shadow:4px 4px  
4px 4px #CCA7A0; box-shadow:4px 4px 4px  
4px #CCA7A0 }
```

# Background

The CSS property to change the background color of an element to Decimal 13412256 is called "background". The background property can be set on classes, ids or directly on the HTML element.

```
.background, #background, body{  
background:#CCA7A0 }
```

If only the background color should be changed can be used:

```
.background{ background-color:#CCA7A0 }
```

This example shows the color as background, it is applied via the CSS property "background".

To optimize and compress your CSS code, you can use our [online CSS compressor and optimizer](#) based on csstidy. If you want to create a linear or radial gradient as background or border, check our [CSS Gradient Generator](#).



Hey! You found this booklet interesting? Support Converting Colors with the new Membership Option!

The pro membership hides all ads, plus gives you double the colors in the color bucket, and more awesome pro features!

**[Learn more, Memberships starting at \\$2.50/m!](#)**

**Follow me  
on Twitter!**

@ConvertingColor