

Converting Colors

Decimal(13412483)

Have a look what the booklet for
Decimal(13412483) contains.

Decimal(13412483)	3
<i>Conversions</i>	4
<i>Details</i>	6
<i>Harmonies</i>	11
<i>Previews</i>	23
<i>Color Blindness Simulation</i>	26
<i>CSS Examples</i>	29

Color

Decimal(13412483)

Conversions

Conversions Part 1

Format	Color
Hex	CCA883
RGB	204, 168, 131
RGB Percent	80%, 66%, 51%
CMY	0.2000, 0.3412, 0.4863
CMYK	0.00, 0.18, 0.36, 0.20
HSL	30°, 42%, 66%
HSV	30°, 36%, 80%
XYZ	43.0012, 42.4813, 27.4060
YIQ	174.5460, 33.3330, -3.8750

Conversions

Conversions Part 2

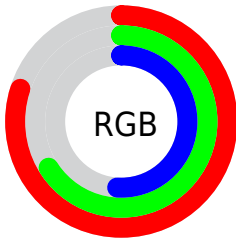
Format	Color
RYB	202, 204, 131
Decimal	13412483
CIELab	71.20, 7.97, 24.07
CIELCh	71, 25.356, 71.675
Yxy	42.4813, 0.3809, 0.3763
Android (android.graphics.Color)	4291602563 (0xFFCCA883)
YUV	174.5460, -21.4682, 25.8312
Hunter-Lab	65.1777, 3.7050, 20.6940

Details

The Decimal color **13412483** is a light color, and the websafe version is hex **CC9966**. A complement of this color would be **8628172**, and the grayscale version is **11513775**.

A 20% lighter version of the original color is **16768952**, and **9729105** is the 20% darker color. If you saturate the color by 10%, you get **13409903**, and if you desaturate by 10%, it is **13415063**.

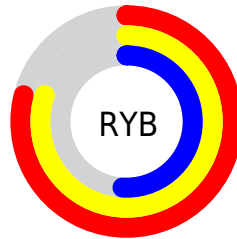
Distribution



Red (80%)

Green (66%)

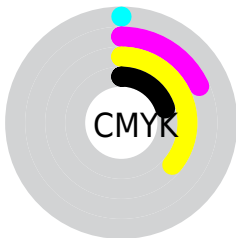
Blue (51%)



Red (79%)

Yellow (80%)

Blue (51%)

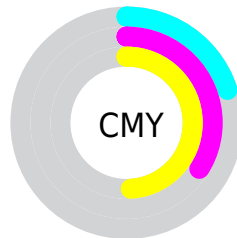


Cyan (0%)

Magenta (18%)

Yellow (36%)

Black (20%)



Cyan (20%)

Magenta (34%)

Yellow (49%)

Brightness & Saturation Gradients

These gradients show how the Decimal color 13412483 changes by changing the brightness by 10 percent. The first figure shows a shift by +10% for each color and the second figure -10%.

Similar to the brightness gradients but the following saturation gradients show a change of the Decimal color 13412483 by changing the saturation by 10% instead.

 13412483

 13412483

16777215

 11570794

 16768952

 9729105

 16776404

 8018746

 16777200

 6308900

 4664846

 3086592

 1507328

 0

 13412483

 13412483

 13409903

 13415063

 13407322

 13417644

 13404742

 13420224

 13402161

 13422805

 13399581

 13425385

 13397001

 13427965

 13395712

 13430527

 13433087

 13434879

Harmonies

Analogous

The Analogous color harmony consists of three colors that are next to each other on the color wheel.



14328209



13412483



11972737

Triad

The Triadic color harmony groups three colors that are evenly spaced from another and form a triangle on the color wheel.



13412483



7322551



12428753

Complementary

The Complementary color scheme is a pair of colors which are on the opposite of each other on the color wheel.



13412483



8628172

Split Complementary

Split-complementary colors differ from the complementary color scheme. The scheme consists of three colors, the original color and two neighbors of the complement color.



10464731



13412483



7125708

Square

The Square scheme is like the rectangle color scheme, but the four colors are evenly spaced on the color wheel.



13412483



8567455



8369626



13868989

Rectangle

The Rectangle color scheme consists of four colors that form a rectangle on the color wheel.



13412483



10859655



8369626



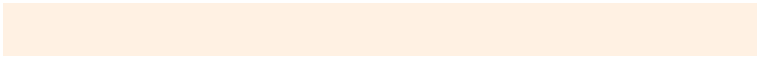
11839702

Sweetspot

The Sweet Spot groups the original color and five complimentary colors.



13412483



16773603



13403048



8419183



0



8421504

Same Dimension

The Same Dimension uses a secret algorithm to generate beautiful new colors.



13412483



16763281



13421699



6709596



10900480



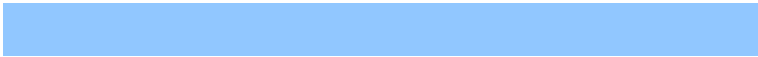
2495232

Inverse Universe

The Inverse Universe completely reimagines the original color for something new.



8628172



9553919



8618956



6054246



21158



4902

Previews

White Background



This preview shows how the Decimal color 13412483 looks on a white background.

Color Contrast Check

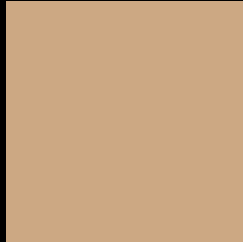
Large Text (above 18pt) WCAG AA × Fail

Any Text WCAG AA × Fail

Large Text (above 18pt) WCAG AAA × Fail

Any Text WCAG AAA × Fail

Black Background



This preview shows how the Decimal color 13412483 looks on a black background.

Color Contrast Check

Large Text (above 18pt) WCAG AA ✓ Pass

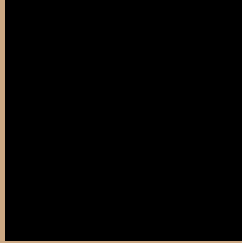
Any Text WCAG AA ✓ Pass

Large Text (above 18pt) WCAG AAA ✓ Pass

Any Text WCAG AAA ✓ Pass

If you want to check with other color combinations, try the [Color Contrast Checker](#).

Decimal 13412483 Background



This preview shows how black text looks on a background with the Decimal color 13412483.



This preview shows how white text looks on a background with the Decimal color 13412483.

Color Blindness Simulation

Color vision deficiency is a very complex topic, and I could not describe the different causes any better than Wikipedia does, so if you want to learn more, you should check out their [article about color blindness](#).

Dichromacy





Tritanopia
13738671

Trichromacy



Original Color
13412483

Protanomaly
12692613

Deuteranomaly
13477763

Tritanomaly
13608095

Monochromacy



Original Color
13412483

Achromatopsia
11513775

Achromatomaly
12233887

CSS Examples

Text

The CSS property to change the color of the text to Decimal 13412483 is called "color". The color property can be set on classes, ids or directly on the HTML element.

This example shows how text in the color #CCA883 looks like.

```
.text, #text, p{  
  color:#CCA883  
}
```

If you want to add a text shadow in that color use the text-shadow property, you can generate a text shadow directly with our [CSS Text Shadow Generator](#).

Here you see how black text with a 4 pixel #CCA883 colored shadow looks like.

```
.shadow{ text-shadow: 4px 4px 2px #CCA883  
}
```

Border

The CSS property to change the border of an element to Decimal 13412483 is called "border". The border property can be set on classes, ids or directly on the HTML element.

This example shows the color as border, it can be applied via the CSS property "border" or "border-color".

```
.border, #border, table{ border:4px solid  
#CCA883 }
```

If only the border color should be changed use the property `border-color`.

```
.border{ border-color:#CCA883 }
```

If you want to add a box shadow in that color use:

Here you see how a box with a 4 pixel #CCA883 colored shadow looks like.

```
.boxshadow{ -moz-box-shadow:4px 4px 4px  
4px #CCA883; -webkit-box-shadow:4px 4px  
4px 4px #CCA883; box-shadow:4px 4px 4px  
4px #CCA883 }
```

Background

The CSS property to change the background color of an element to Decimal 13412483 is called "background". The background property can be set on classes, ids or directly on the HTML element.

```
.background, #background, body{  
background:#CCA883 }
```

If only the background color should be changed can be used:

```
.background{ background-color:#CCA883 }
```

This example shows the color as background, it is applied via the CSS property "background".

To optimize and compress your CSS code, you can use our [online CSS compressor and optimizer](#) based on csstidy. If you want to create a linear or radial gradient as background or border, check our [CSS Gradient Generator](#).

Hey! You found this booklet interesting? Support Converting Colors with the new Membership Option!

The pro membership hides all ads, plus gives you double the colors in the color bucket, and more awesome pro features!

[Learn more, Memberships starting at \\$2.50/m!](#)

**Follow me
on Twitter!**

@ConvertingColor