

# Converting Colors

Decimal(13412490)

Have a look what the booklet for  
Decimal(13412490) contains.

<b>Decimal(13412490)</b> .....	3
<i><b>Conversions</b></i> .....	4
<i><b>Details</b></i> .....	6
<i><b>Harmonies</b></i> .....	11
<i><b>Previews</b></i> .....	23
<i><b>Color Blindness Simulation</b></i> .....	26
<i><b>CSS Examples</b></i> .....	29

# **Color**

**Decimal(13412490)**

# Conversions

## Conversions Part 1

Format	Color
Hex	CCA88A
RGB	204, 168, 138
RGB Percent	80%, 66%, 54%
CMY	0.2000, 0.3412, 0.4588
CMYK	0.00, 0.18, 0.32, 0.20
HSL	27°, 39%, 67%
HSV	27°, 32%, 80%
XYZ	43.4919, 42.6776, 29.9901
YIQ	175.3440, 31.0860, -1.6980

# Conversions

## Conversions Part 2

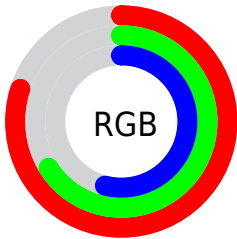
<b>Format</b>	<b>Color</b>
<a href="#">RYB</a>	<a href="#">204, 193, 138</a>
Decimal	<a href="#">13412490</a>
CIELab	<a href="#">71.34, 8.85, 20.45</a>
CIELCh	<a href="#">71, 22.283, 66.604</a>
Yxy	<a href="#">42.6776, 0.3744, 0.3674</a>
Android (android.graphics.Color)	<a href="#">4291602570</a> ( <a href="#">0xFFCCA88A</a> )
YUV	<a href="#">175.3440, -18.4106, 25.1313</a>
Hunter-Lab	<a href="#">65.3281, 4.5115, 18.5115</a>

# Details

The Decimal color **13412490** is a light color, and the websafe version is hex **CC9966**. A complement of this color would be **9088716**, and the grayscale version is **11579568**.

A 20% lighter version of the original color is **16768960**, and **9794648** is the 20% darker color. If you saturate the color by 10%, you get **13409654**, and if you desaturate by 10%, it is **13415326**.

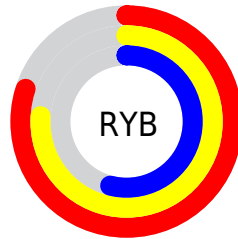
# Distribution



Red (80%)

Green (66%)

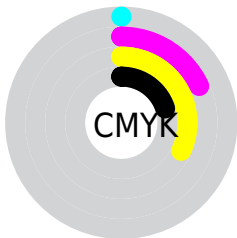
Blue (54%)



Red (80%)

Yellow (76%)

Blue (54%)

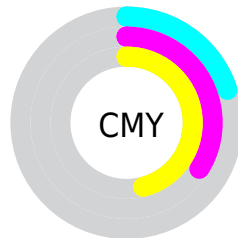


Cyan (0%)

Magenta (18%)

Yellow (32%)

Black (20%)



Cyan (20%)

Magenta (34%)

Yellow (46%)

# Brightness & Saturation Gradients

These gradients show how the Decimal color 13412490 changes by changing the brightness by 10 percent. The first figure shows a shift by +10% for each color and the second figure -10%.

Similar to the brightness gradients but the following saturation gradients show a change of the Decimal color 13412490 by changing the saturation by 10% instead.



 13412490

 13412490

16777215

 11570800

 16768960

 9794648

 16776411

 8018752

 16777208

 6308906

 4664853

 3152128

 1572864

 0

 13412490

 13412490

 13409654

 13415326

 13406817

 13418163

 13403981

 13420999

 13400888

 13424092

 13398052

 13426928

 13395216

 13429759

 13393152

 13432575

 13434879

# Harmonies

## Analogous

The Analogous color harmony consists of three colors that are next to each other on the color wheel.



14131863



13412490



12169094

# Triad

The Triadic color harmony groups three colors that are evenly spaced from another and form a triangle on the color wheel.



13412490



8043187



12101839

# Complementary

The Complementary color scheme is a pair of colors which are on the opposite of each other on the color wheel.



13412490



9088716

# Split Complementary

Split-complementary colors differ from the complementary color scheme. The scheme consists of three colors, the original color and two neighbors of the complement color.



10334167



13412490



7780806

# Square

The Square scheme is like the rectangle color scheme, but the four colors are evenly spaced on the color wheel.



13412490



9222558



8631763



13476543

# Rectangle

The Rectangle color scheme consists of four colors that form a rectangle on the color wheel.



13412490



11252618



8631763



11512531

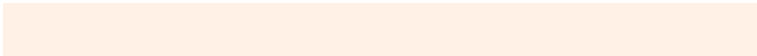


# Sweetspot

The Sweet Spot groups the original color and five complimentary colors.



13412490



16773606



13404846



8419184



0



8421504



# Same Dimension

The Same Dimension uses a secret algorithm to generate beautiful new colors.



13412490



16763292



13420938



6709340



10898176



2494720

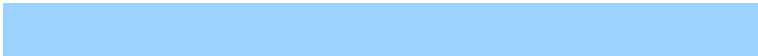


# Inverse Universe

The Inverse Universe completely reimagines the original color for something new.



9088716



10277631



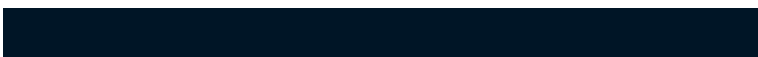
9080268



6054246



23206



5414



# Previews

## White Background



This preview shows how the Decimal color 13412490 looks on a white background.

## Color Contrast Check

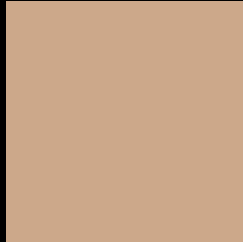
Large Text (above 18pt) WCAG AA × Fail

Any Text WCAG AA × Fail

Large Text (above 18pt) WCAG AAA × Fail

Any Text WCAG AAA × Fail

# Black Background



This preview shows how the Decimal color 13412490 looks on a black background.

## Color Contrast Check

Large Text (above 18pt) WCAG AA ✓ Pass

Any Text WCAG AA ✓ Pass

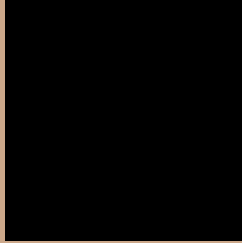
Large Text (above 18pt) WCAG AAA ✓ Pass

Any Text WCAG AAA ✓ Pass

If you want to check with other color combinations, try the [Color Contrast Checker](#).



## Decimal 13412490 Background



This preview shows how black text looks on a background with the Decimal color 13412490.




This preview shows how white text looks on a background with the Decimal color 13412490.

# Color Blindness Simulation

Color vision deficiency is a very complex topic, and I could not describe the different causes any better than Wikipedia does, so if you want to learn more, you should check out their [article about color blindness](#).

## Dichromacy





**Tritanopia**  
13673391

# Trichromacy



**Original Color**  
13412490

**Protanomaly**  
12627084

**Deuteranomaly**  
13412490

**Tritanomaly**  
13608354

# Monochromacy



**Original Color**  
13412490

**Achromatopsia**  
11513775

**Achromatomaly**  
12233890

# CSS Examples

## Text

The CSS property to change the color of the text to Decimal 13412490 is called "color". The color property can be set on classes, ids or directly on the HTML element.

This example shows how text in the color #CCA88A looks like.

```
.text, #text, p{  
  color:#CCA88A  
}
```

If you want to add a text shadow in that color use the text-shadow property, you can generate a text shadow directly with our [CSS Text Shadow Generator](#).

Here you see how black text with a 4 pixel #CCA88A colored shadow looks like.

```
.shadow{ text-shadow: 4px 4px 2px #CCA88A
}
```

## Border

The CSS property to change the border of an element to Decimal 13412490 is called "border". The border property can be set on classes, ids or directly on the HTML element.

This example shows the color as border, it can be applied via the CSS property "border" or "border-color".

```
.border, #border, table{ border:4px solid
#CCA88A }
```

If only the border color should be changed use the property `border-color`.

```
.border{ border-color:#CCA88A }
```

If you want to add a box shadow in that color use:

Here you see how a box with a 4 pixel #CCA88A colored shadow looks like.

```
.boxshadow{ -moz-box-shadow:4px 4px 4px  
4px #CCA88A; -webkit-box-shadow:4px 4px  
4px 4px #CCA88A; box-shadow:4px 4px 4px  
4px #CCA88A }
```

# Background

The CSS property to change the background color of an element to Decimal 13412490 is called "background". The background property can be set on classes, ids or directly on the HTML element.

```
.background, #background, body{  
background:#CCA88A }
```

If only the background color should be changed can be used:

```
.background{ background-color:#CCA88A }
```

This example shows the color as background, it is applied via the CSS property "background".

To optimize and compress your CSS code, you can use our [online CSS compressor and optimizer](#) based on csstidy. If you want to create a linear or radial gradient as background or border, check our [CSS Gradient Generator](#).



Hey! You found this booklet interesting? Support Converting Colors with the new Membership Option!

The pro membership hides all ads, plus gives you double the colors in the color bucket, and more awesome pro features!

**[Learn more, Memberships starting at \\$2.50/m!](#)**

**Follow me  
on Twitter!**

@ConvertingColor