

Converting Colors

Decimal(13414309)

Have a look what the booklet for
Decimal(13414309) contains.

Decimal(13414309)	3
<i>Conversions</i>	4
<i>Details</i>	6
<i>Harmonies</i>	11
<i>Previews</i>	23
<i>Color Blindness Simulation</i>	26
<i>CSS Examples</i>	29

Color

Decimal(13414309)

Conversions

Conversions Part 1

Format	Color
Hex	CCAFA5
RGB	204, 175, 165
RGB Percent	80%, 69%, 65%
CMY	0.2000, 0.3137, 0.3529
CMYK	0.00, 0.14, 0.19, 0.20
HSL	15°, 28%, 72%
HSV	15°, 19%, 80%
XYZ	47.0233, 46.2139, 42.0391
YIQ	182.5310, 20.4940, 3.0380

Conversions

Conversions Part 2

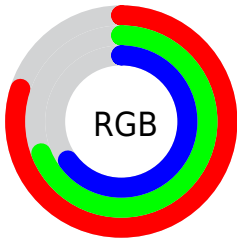
Format	Color
RYB	204, 178, 165
Decimal	13414309
CIELab	73.68, 8.88, 8.99
CIElCh	74, 12.642, 45.355
Yxy	46.2139, 0.3476, 0.3416
Android (android.graphics.Color)	4291604389 (0xFFCCAFA5)
YUV	182.5310, -8.6428, 18.8283
Hunter-Lab	67.9808, 4.5046, 10.9219

Details

The Decimal color **13414309** is a light color, and the websafe version is hex **CC9999**. A complement of this color would be **10863308**, and the grayscale version is **12040119**.

A 20% lighter version of the original color is **16771036**, and **9796465** is the 20% darker color. If you saturate the color by 10%, you get **13410449**, and if you desaturate by 10%, it is **13418169**.

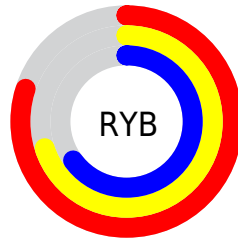
Distribution



Red (80%)

Green (69%)

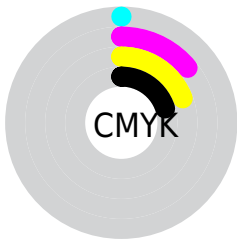
Blue (65%)



Red (80%)

Yellow (70%)

Blue (65%)

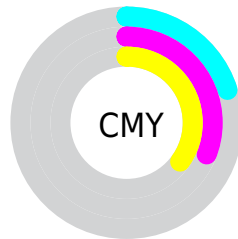


Cyan (0%)

Magenta (14%)

Yellow (19%)

Black (20%)



Cyan (20%)

Magenta (31%)

Yellow (35%)

Brightness & Saturation Gradients


These gradients show how the Decimal color 13414309 changes by changing the brightness by 10 percent. The first figure shows a shift by +10% for each color and the second figure -10%.

Similar to the brightness gradients but the following saturation gradients show a change of the Decimal color 13414309 by changing the saturation by 10% instead.

 13414309

 13414309

16777215

 11572363

 16771036

 9796465

 16777209

 8086105

 6441537

 4862763

 3284503

 1967616

 0

 13414309

 13414309

■ 13410449

■ 13418169

■ 13406588

■ 13422030

■ 13402472

■ 13426146

■ 13398611

■ 13430007

■ 13394751

■ 13433855

■ 13390891

■ 13434879

■ 13387030

■ 13383170

■ 13382656

Harmonies

Analogous

The Analogous color harmony consists of three colors that are next to each other on the color wheel.



13544879



13414309



12890783

Triad

The Triadic color harmony groups three colors that are evenly spaced from another and form a triangle on the color wheel.



13414309



10468527



11580619

Complementary

The Complementary color scheme is a pair of colors which are on the opposite of each other on the color wheel.



13414309



10863308

Split Complementary

Split-complementary colors differ from the complementary color scheme. The scheme consists of three colors, the original color and two neighbors of the complement color.



10664139



13414309



10009787

Square

The Square scheme is like the rectangle color scheme, but the four colors are evenly spaced on the color wheel.



13414309



11254181



10075077



12562629

Rectangle

The Rectangle color scheme consists of four colors that form a rectangle on the color wheel.



13414309



12367262



10075077



11253196

Sweetspot

The Sweet Spot groups the original color and five complimentary colors.



13414309



16774384



13411778



8419703



0



8421504

Same Dimension

The Same Dimension uses a secret algorithm to generate beautiful new colors.



13414309



16765892



13419173



6708828



10889728



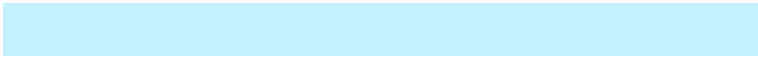
2492928

Inverse Universe

The Inverse Universe completely reimagines the original color for something new.



10863308



12906751



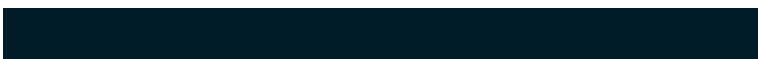
10858444



6054758



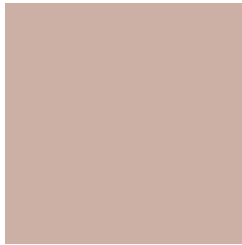
31654



7206

Previews

White Background



This preview shows how the Decimal color 13414309 looks on a white background.

Color Contrast Check

Large Text (above 18pt) WCAG AA × Fail

Any Text WCAG AA × Fail

Large Text (above 18pt) WCAG AAA × Fail

Any Text WCAG AAA × Fail

Black Background



This preview shows how the Decimal color 13414309 looks on a black background.

Color Contrast Check

Large Text (above 18pt) WCAG AA ✓ Pass

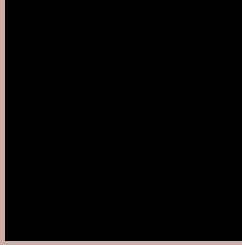
Any Text WCAG AA ✓ Pass

Large Text (above 18pt) WCAG AAA ✓ Pass

Any Text WCAG AAA ✓ Pass

If you want to check with other color combinations, try the [Color Contrast Checker](#).

Decimal 13414309 Background



This preview shows how black text looks on a background with the Decimal color 13414309.



This preview shows how white text looks on a background with the Decimal color 13414309.

Color Blindness Simulation

Color vision deficiency is a very complex topic, and I could not describe the different causes any better than Wikipedia does, so if you want to learn more, you should check out their [article about color blindness](#).

Dichromacy





Tritanopia
13610169

Trichromacy



Original Color
13414309

Protanomaly
12759975

Deuteranomaly
13479845

Tritanomaly
13544882

Monochromacy



Original Color
13414309

Achromatopsia
12040119

Achromatomaly
12563632

CSS Examples

Text

The CSS property to change the color of the text to Decimal 13414309 is called "color". The color property can be set on classes, ids or directly on the HTML element.

This example shows how text in the color #CCAFA5 looks like.

```
.text, #text, p{  
  color:#CCAFA5  
}
```

If you want to add a text shadow in that color use the text-shadow property, you can generate a text shadow directly with our [CSS Text Shadow Generator](#).

Here you see how black text with a 4 pixel #CCAFA5 colored shadow looks like.

```
.shadow{ text-shadow: 4px 4px 2px #CCAFA5
}
```

Border

The CSS property to change the border of an element to Decimal 13414309 is called "border". The border property can be set on classes, ids or directly on the HTML element.

This example shows the color as border, it can be applied via the CSS property "border" or "border-color".

```
.border, #border, table{ border:4px solid
#CCAFA5 }
```

If only the border color should be changed use the property `border-color`.

```
.border{ border-color:#CCAFA5 }
```

If you want to add a box shadow in that color use:

Here you see how a box with a 4 pixel #CCAFA5 colored shadow looks like.

```
.boxshadow{ -moz-box-shadow:4px 4px 4px  
4px #CCAFA5; -webkit-box-shadow:4px 4px  
4px 4px #CCAFA5; box-shadow:4px 4px 4px  
4px #CCAFA5 }
```

Background

The CSS property to change the background color of an element to Decimal 13414309 is called "background". The background property can be set on classes, ids or directly on the HTML element.

```
.background, #background, body{  
background:#CCAFA5 }
```

If only the background color should be changed can be used:

```
.background{ background-color:#CCAFA5 }
```

This example shows the color as background, it is applied via the CSS property "background".

To optimize and compress your CSS code, you can use our [online CSS compressor and optimizer](#) based on csstidy. If you want to create a linear or radial gradient as background or border, check our [CSS Gradient Generator](#).

Hey! You found this booklet interesting? Support Converting Colors with the new Membership Option!

The pro membership hides all ads, plus gives you double the colors in the color bucket, and more awesome pro features!

[Learn more, Memberships starting at \\$2.50/m!](#)

**Follow me
on Twitter!**

@ConvertingColor