

# Converting Colors

Decimal(13414311)

Have a look what the booklet for  
Decimal(13414311) contains.

<b>Decimal(13414311)</b> .....	3
<i><b>Conversions</b></i> .....	4
<i><b>Details</b></i> .....	6
<i><b>Harmonies</b></i> .....	11
<i><b>Previews</b></i> .....	23
<i><b>Color Blindness Simulation</b></i> .....	26
<i><b>CSS Examples</b></i> .....	29

# **Color**

**Decimal(13414311)**

# Conversions

## Conversions Part 1

<b>Format</b>	<b>Color</b>
Hex	CCAFA7
RGB	204, 175, 167
RGB Percent	80%, 69%, 65%
CMY	0.2000, 0.3137, 0.3451
CMYK	0.00, 0.14, 0.18, 0.20
HSL	13°, 27%, 73%
HSV	13°, 18%, 80%
XYZ	47.2069, 46.2873, 43.0055
YIQ	182.7590, 19.8520, 3.6600

# Conversions

## Conversions Part 2

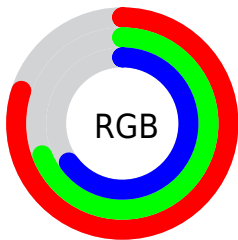
Format	Color
<a href="#">RYB</a>	<a href="#">204, 177, 167</a>
Decimal	<a href="#">13414311</a>
CIELab	<a href="#">73.73, 9.19, 7.97</a>
CIELCh	<a href="#">74, 12.166, 40.920</a>
Yxy	<a href="#">46.2873, 0.3458, 0.3391</a>
Android (android.graphics.Color)	<a href="#">4291604391 (0xFFCCAFA7)</a>
YUV	<a href="#">182.7590, -7.7692, 18.6284</a>
Hunter-Lab	<a href="#">68.0348, 4.7937, 10.1465</a>

# Details

The Decimal color **13414311** is a light color, and the websafe version is hex **CC9999**. A complement of this color would be **10994892**, and the grayscale version is **12040119**.

A 20% lighter version of the original color is **16771038**, and **9796467** is the 20% darker color. If you saturate the color by 10%, you get **13410195**, and if you desaturate by 10%, it is **13418427**.

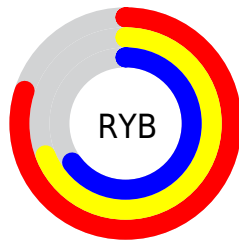
# Distribution



Red (80%)

Green (69%)

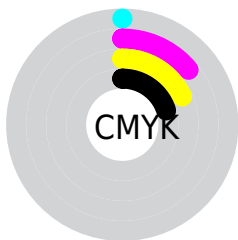
Blue (65%)



Red (80%)

Yellow (69%)

Blue (65%)

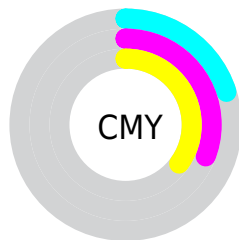


Cyan (0%)

Magenta (14%)

Yellow (18%)

Black (20%)



Cyan (20%)

Magenta (31%)

Yellow (35%)

# Brightness & Saturation Gradients

These gradients show how the Decimal color 13414311 changes by changing the brightness by 10 percent. The first figure shows a shift by +10% for each color and the second figure -10%.

Similar to the brightness gradients but the following saturation gradients show a change of the Decimal color 13414311 by changing the saturation by 10% instead.



 13414311

 13414311

16777215

 11572365

 16771038

 9796467

 16777211

 8086107

 6441539

 4862765

 3284504

 2033152

 0

 13414311

 13414311

13410195

13418427

13406078

13422544

13401962

13426660

13397845

13430777

13393729

13434879

13389613

13385496

13381380

13380608

# Harmonies

## Analogous

The Analogous color harmony consists of three colors that are next to each other on the color wheel.



13479601



13414311



12956320

# Triad

The Triadic color harmony groups three colors that are evenly spaced from another and form a triangle on the color wheel.



13414311



10599342



11449803

# Complementary

The Complementary color scheme is a pair of colors which are on the opposite of each other on the color wheel.



13414311



10994892

# Split Complementary

Split-complementary colors differ from the complementary color scheme. The scheme consists of three colors, the original color and two neighbors of the complement color.



10664138



13414311



10140857

# Square

The Square scheme is like the rectangle color scheme, but the four colors are evenly spaced on the color wheel.



13414311



11385252



10140611



12366278

# Rectangle

The Rectangle color scheme consists of four colors that form a rectangle on the color wheel.



13414311



12498079



10140611



11187915

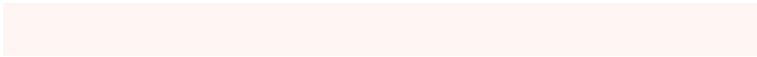


# Sweetspot

The Sweet Spot groups the original color and five complimentary colors.



13414311



16774642



13412293



8419960



0



8421504

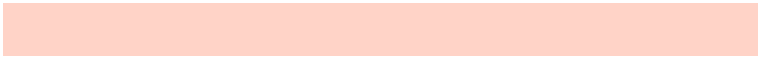


# Same Dimension

The Same Dimension uses a secret algorithm to generate beautiful new colors.



13414311



16765895



13418919



6708828



10888192



2492416

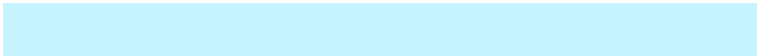


# Inverse Universe

The Inverse Universe completely reimagines the original color for something new.



10994892



13104127



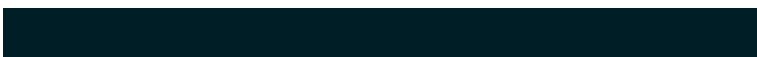
10990284



6055014



33446

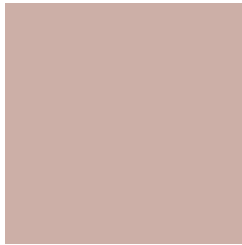


7718



# Previews

## White Background



This preview shows how the Decimal color 13414311 looks on a white background.

## Color Contrast Check

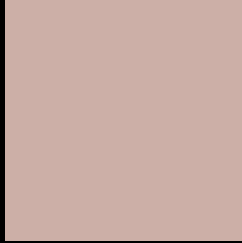
Large Text (above 18pt) WCAG AA × Fail

Any Text WCAG AA × Fail

Large Text (above 18pt) WCAG AAA × Fail

Any Text WCAG AAA × Fail

# Black Background



This preview shows how the Decimal color 13414311 looks on a black background.

## Color Contrast Check

Large Text (above 18pt) WCAG AA ✓ Pass

Any Text WCAG AA ✓ Pass

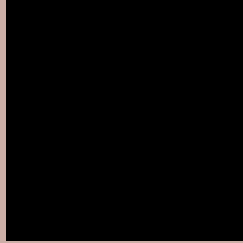
Large Text (above 18pt) WCAG AAA ✓ Pass

Any Text WCAG AAA ✓ Pass

If you want to check with other color combinations, try the [Color Contrast Checker](#).



## Decimal 13414311 Background



This preview shows how black text looks on a background with the Decimal color 13414311.

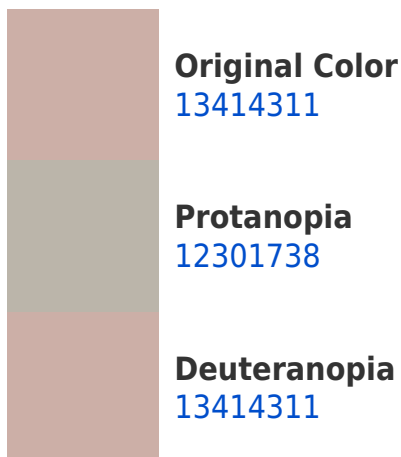



This preview shows how white text looks on a background with the Decimal color 13414311.

# Color Blindness Simulation

Color vision deficiency is a very complex topic, and I could not describe the different causes any better than Wikipedia does, so if you want to learn more, you should check out their [article about color blindness](#).

## Dichromacy





**Tritanopia**  
13544634

# Trichromacy



**Original Color**  
13414311

**Protanomaly**  
12694441

**Deuteranomaly**  
13414311

**Tritanomaly**  
13479347

# Monochromacy



**Original Color**  
13414311

**Achromatopsia**  
12040119

**Achromatomaly**  
12563633

# CSS Examples

## Text

The CSS property to change the color of the text to Decimal 13414311 is called "color". The color property can be set on classes, ids or directly on the HTML element.

This example shows how text in the color #CCAFA7 looks like.

```
.text, #text, p{  
  color:#CCAFA7  
}
```

If you want to add a text shadow in that color use the text-shadow property, you can generate a text shadow directly with our [CSS Text Shadow Generator](#).

Here you see how black text with a 4 pixel #CCAFA7 colored shadow looks like.

```
.shadow{ text-shadow: 4px 4px 2px #CCAFA7
}
```

## Border

The CSS property to change the border of an element to Decimal 13414311 is called "border". The border property can be set on classes, ids or directly on the HTML element.

This example shows the color as border, it can be applied via the CSS property "border" or "border-color".

```
.border, #border, table{ border:4px solid
#CCAFA7 }
```

If only the border color should be changed use the property `border-color`.

```
.border{ border-color:#CCAFA7 }
```

If you want to add a box shadow in that color use:

Here you see how a box with a 4 pixel #CCAFA7 colored shadow looks like.

```
.boxshadow{ -moz-box-shadow:4px 4px 4px  
4px #CCAFA7; -webkit-box-shadow:4px 4px  
4px 4px #CCAFA7; box-shadow:4px 4px 4px  
4px #CCAFA7 }
```

# Background

The CSS property to change the background color of an element to Decimal 13414311 is called "background". The background property can be set on classes, ids or directly on the HTML element.

```
.background, #background, body{  
background:#CCAFA7 }
```

If only the background color should be changed can be used:

```
.background{ background-color:#CCAFA7 }
```

This example shows the color as background, it is applied via the CSS property "background".

To optimize and compress your CSS code, you can use our [online CSS compressor and optimizer](#) based on csstidy. If you want to create a linear or radial gradient as background or border, check our [CSS Gradient Generator](#).



Hey! You found this booklet interesting? Support Converting Colors with the new Membership Option!

The pro membership hides all ads, plus gives you double the colors in the color bucket, and more awesome pro features!

**[Learn more, Memberships starting at \\$2.50/m!](#)**

**Follow me  
on Twitter!**

@ConvertingColor