

Converting Colors

Decimal(13414573)

Have a look what the booklet for
Decimal(13414573) contains.

Decimal(13414573)	3
<i>Conversions</i>	4
<i>Details</i>	6
<i>Harmonies</i>	11
<i>Previews</i>	23
<i>Color Blindness Simulation</i>	26
<i>CSS Examples</i>	29

Color

Decimal(13414573)

Conversions

Conversions Part 1

Format	Color
Hex	CCB0AD
RGB	204, 176, 173
RGB Percent	80%, 69%, 68%
CMY	0.2000, 0.3098, 0.3216
CMYK	0.00, 0.14, 0.15, 0.20
HSL	6°, 23%, 74%
HSV	6°, 15%, 80%
XYZ	47.9700, 46.9052, 46.0605
YIQ	184.0300, 17.6510, 5.0030

Conversions

Conversions Part 2

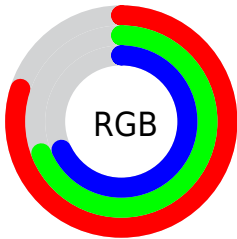
Format	Color
RYB	204, 176, 173
Decimal	13414573
CIELab	74.13, 9.60, 5.26
CIELCh	74, 10.948, 28.708
Yxy	46.9052, 0.3404, 0.3328
Android (android.graphics.Color)	4291604653 (0xFFCCB0AD)
YUV	184.0300, -5.4378, 17.5137
Hunter-Lab	68.4873, 5.1723, 8.0663

Details

The Decimal color **13414573** is a light color, and the websafe version is hex **CC9999**. A complement of this color would be **11389388**, and the grayscale version is **12105912**.

A 20% lighter version of the original color is **16771300**, and **9862009** is the 20% darker color. If you saturate the color by 10%, you get **13409945**, and if you desaturate by 10%, it is **13419201**.

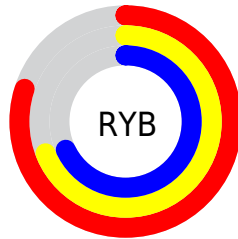
Distribution



Red (80%)

Green (69%)

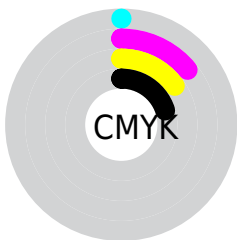
Blue (68%)



Red (80%)

Yellow (69%)

Blue (68%)

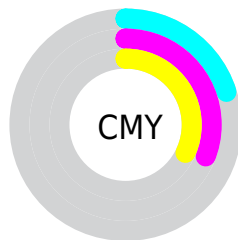


Cyan (0%)

Magenta (14%)

Yellow (15%)

Black (20%)



Cyan (20%)

Magenta (31%)

Yellow (32%)

Brightness & Saturation Gradients

These gradients show how the Decimal color 13414573 changes by changing the brightness by 10 percent. The first figure shows a shift by +10% for each color and the second figure -10%.

Similar to the brightness gradients but the following saturation gradients show a change of the Decimal color 13414573 by changing the saturation by 10% instead.

■ 13414573

■ 13414573

16777215

■ 11572626

■ 16771300

■ 9862009

■ 8086368

■ 6441800

■ 4863026

■ 3350301

■ 2033411

■ 0

■ 13414573

■ 13414573

 13409945

 13419201

 13405060

 13424086

 13400432

 13428714

 13395547

 13433599

 13390919

 13434879

 13386035

 13381406

 13376778

 13374464

Harmonies

Analogous

The Analogous color harmony consists of three colors that are next to each other on the color wheel.



13283511



13414573



13152933

Triad

The Triadic color harmony groups three colors that are evenly spaced from another and form a triangle on the color wheel.



13414573



11058092



11253706

Complementary

The Complementary color scheme is a pair of colors which are on the opposite of each other on the color wheel.



13414573



11389388

Split Complementary

Split-complementary colors differ from the complementary color scheme. The scheme consists of three colors, the original color and two neighbors of the complement color.



10599111



13414573



10534069

Square

The Square scheme is like the rectangle color scheme, but the four colors are evenly spaced on the color wheel.



13414573



11844005



10337471



12104904

Rectangle

The Rectangle color scheme consists of four colors that form a rectangle on the color wheel.



13414573



12760227



10337471



10991818

Sweetspot

The Sweet Spot groups the original color and five complimentary colors.



13414573



16774130



13413833



8419704



0



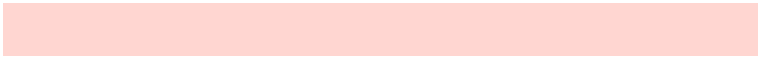
8421504

Same Dimension

The Same Dimension uses a secret algorithm to generate beautiful new colors.



13414573



16766673



13418413



6708572



10883072



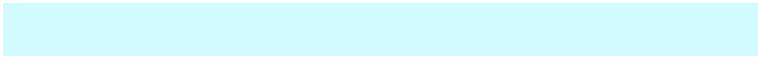
2491392

Inverse Universe

The Inverse Universe completely reimagines the original color for something new.



11389388



13761535



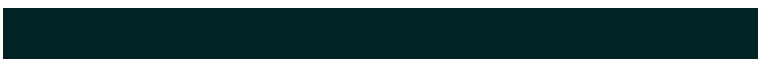
11385548



6055270



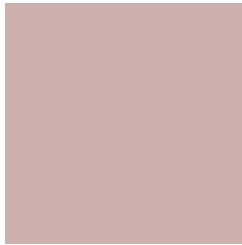
38566



8998

Previews

White Background



This preview shows how the Decimal color 13414573 looks on a white background.

Color Contrast Check

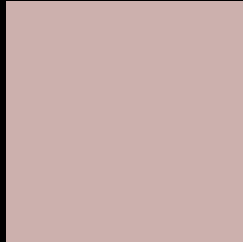
Large Text (above 18pt) WCAG AA × Fail

Any Text WCAG AA × Fail

Large Text (above 18pt) WCAG AAA × Fail

Any Text WCAG AAA × Fail

Black Background



This preview shows how the Decimal color 13414573 looks on a black background.

Color Contrast Check

Large Text (above 18pt) WCAG AA ✓ Pass

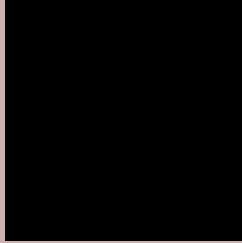
Any Text WCAG AA ✓ Pass

Large Text (above 18pt) WCAG AAA ✓ Pass

Any Text WCAG AAA ✓ Pass

If you want to check with other color combinations, try the [Color Contrast Checker](#).

Decimal 13414573 Background



This preview shows how black text looks on a background with the Decimal color 13414573.







This preview shows how white text looks on a background with the Decimal color 13414573.

Color Blindness Simulation

Color vision deficiency is a very complex topic, and I could not describe the different causes any better than Wikipedia does, so if you want to learn more, you should check out their [article about color blindness](#).

Dichromacy

	Original Color 13414573
	Protanopia 12302000
	Deuteranopia 13414573



Tritanopia
13545147

Trichromacy



Original Color
13414573

Protanomaly
12694703

Deuteranomaly
13414573

Tritanomaly
13479862

Monochromacy



Original Color
13414573

Achromatopsia
12105912

Achromatomaly
12563892

CSS Examples

Text

The CSS property to change the color of the text to Decimal 13414573 is called "color". The color property can be set on classes, ids or directly on the HTML element.

This example shows how text in the color #CCB0AD looks like.

```
.text, #text, p{  
    color:#CCB0AD  
}
```

If you want to add a text shadow in that color use the text-shadow property, you can generate a text shadow directly with our [CSS Text Shadow Generator](#).

Here you see how black text with a 4 pixel #CCB0AD colored shadow looks like.

```
.shadow{ text-shadow: 4px 4px 2px #CCB0AD
}
```

Border

The CSS property to change the border of an element to Decimal 13414573 is called "border". The border property can be set on classes, ids or directly on the HTML element.

This example shows the color as border, it can be applied via the CSS property "border" or "border-color".

```
.border, #border, table{ border:4px solid
#CCB0AD }
```

If only the border color should be changed use the property `border-color`.

```
.border{ border-color:#CCB0AD }
```

If you want to add a box shadow in that color use:

Here you see how a box with a 4 pixel #CCB0AD colored shadow looks like.

```
.boxshadow{ -moz-box-shadow:4px 4px 4px  
4px #CCB0AD; -webkit-box-shadow:4px 4px  
4px 4px #CCB0AD; box-shadow:4px 4px 4px  
4px #CCB0AD }
```

Background

The CSS property to change the background color of an element to Decimal 13414573 is called "background". The background property can be set on classes, ids or directly on the HTML element.

```
.background, #background, body{  
background:#CCB0AD }
```

If only the background color should be changed can be used:

```
.background{ background-color:#CCB0AD }
```

This example shows the color as background, it is applied via the CSS property "background".

To optimize and compress your CSS code, you can use our [online CSS compressor and optimizer](#) based on csstidy. If you want to create a linear or radial gradient as background or border, check our [CSS Gradient Generator](#).

Hey! You found this booklet interesting? Support Converting Colors with the new Membership Option!

The pro membership hides all ads, plus gives you double the colors in the color bucket, and more awesome pro features!

[Learn more, Memberships starting at \\$2.50/m!](#)

**Follow me
on Twitter!**

@ConvertingColor