

Converting Colors

Decimal(13415346)

Have a look what the booklet for
Decimal(13415346) contains.

Decimal(13415346)	3
<i>Conversions</i>	4
<i>Details</i>	6
<i>Harmonies</i>	11
<i>Previews</i>	23
<i>Color Blindness Simulation</i>	26
<i>CSS Examples</i>	29

Color

Decimal(13415346)

Conversions

Conversions Part 1

Format	Color
Hex	CCB3B2
RGB	204, 179, 178
RGB Percent	80%, 70%, 70%
CMY	0.2000, 0.2980, 0.3020
CMYK	0.00, 0.12, 0.13, 0.20
HSL	2°, 20%, 75%
HSV	2°, 13%, 80%
XYZ	49.0578, 48.2919, 48.8551
YIQ	186.3610, 15.2210, 4.9890

Conversions

Conversions Part 2

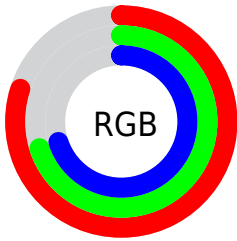
Format	Color
R_{YB}	204, 179, 178
Decimal	13415346
CIE _{Lab}	75.01, 8.80, 3.80
CIE _{LCh}	75, 9.582, 23.352
Yxy	48.2919, 0.3355, 0.3303
Android (android.graphics.Color)	4291605426 (0xFFCCB3B2)
YUV	186.3610, -4.1220, 15.4694
Hunter-Lab	69.4924, 4.3995, 6.9621

Details

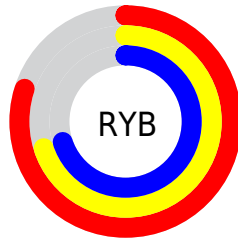
The Decimal color **13415346** is a light color, and the websafe version is hex **CCCCCC**. A complement of this color would be **11717580**, and the grayscale version is **12237498**.

A 20% lighter version of the original color is **16772074**, and **9862781** is the 20% darker color. If you saturate the color by 10%, you get **13410206**, and if you desaturate by 10%, it is **13420486**.

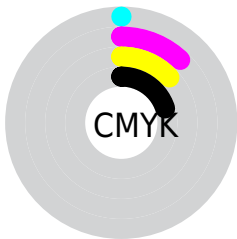
Distribution



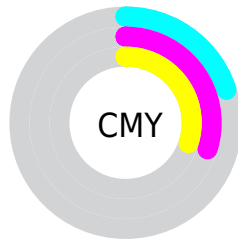
- Red (80%)
- Green (70%)
- Blue (70%)



- Red (80%)
- Yellow (70%)
- Blue (70%)



- Cyan (0%)
- Magenta (12%)
- Yellow (13%)
- Black (20%)



- Cyan (20%)
- Magenta (30%)
- Yellow (30%)

Brightness & Saturation Gradients

These gradients show how the Decimal color 13415346 changes by changing the brightness by 10 percent. The first figure shows a shift by +10% for each color and the second figure -10%.

Similar to the brightness gradients but the following saturation gradients show a change of the Decimal color 13415346 by changing the saturation by 10% instead.

 13415346

 13415346

16777215

 11573399

 16772074

 9862781

 8152420

 6507853

 4863542

 3350817

 2034441

 0

 13415346

 13415346

 13410206

 13420486

 13405321

 13425371

 13400181

 13430511

 13395296

 13434879

 13390156

 13385016

 13380131

 13374991

 13371392

Harmonies

Analogous

The Analogous color harmony consists of three colors that are next to each other on the color wheel.



13284283



13415346



13219243

Triad

The Triadic color harmony groups three colors that are evenly spaced from another and form a triangle on the color wheel.



13415346



11451822



11385546

Complementary

The Complementary color scheme is a pair of colors which are on the opposite of each other on the color wheel.



13415346



11717580

Split Complementary

Split-complementary colors differ from the complementary color scheme. The scheme consists of three colors, the original color and two neighbors of the complement color.



10861766



13415346



10927798

Square

The Square scheme is like the rectangle color scheme, but the four colors are evenly spaced on the color wheel.



13415346



12106408



10731199



12105673

Rectangle

The Rectangle color scheme consists of four colors that form a rectangle on the color wheel.



13415346



12957352



10731199



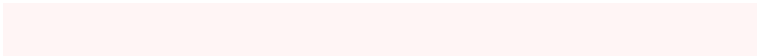
11189193

Sweetspot

The Sweet Spot groups the original color and five complimentary colors.



13415346



16774645



13415115



8419705



0



8421504

Same Dimension

The Same Dimension uses a secret algorithm to generate beautiful new colors.



13415346



16767705



13418674



6708316



10880512



2490624

Inverse Universe

The Inverse Universe completely reimagines the original color for something new.



11717580



14286591



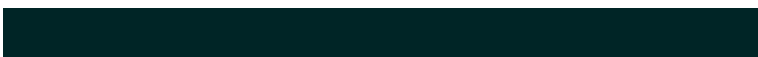
11714252



6055526



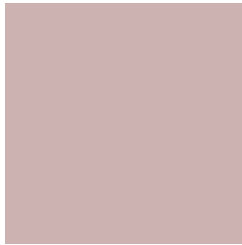
40870



9510

Previews

White Background



This preview shows how the Decimal color 13415346 looks on a white background.

Color Contrast Check

Large Text (above 18pt) WCAG AA × Fail

Any Text WCAG AA × Fail

Large Text (above 18pt) WCAG AAA × Fail

Any Text WCAG AAA × Fail

Black Background



This preview shows how the Decimal color 13415346 looks on a black background.

Color Contrast Check

Large Text (above 18pt) WCAG AA ✓ Pass

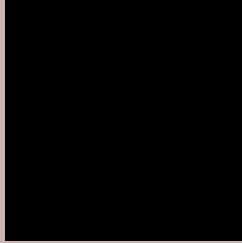
Any Text WCAG AA ✓ Pass

Large Text (above 18pt) WCAG AAA ✓ Pass

Any Text WCAG AAA ✓ Pass

If you want to check with other color combinations, try the [Color Contrast Checker](#).

Decimal 13415346 Background



This preview shows how black text looks on a background with the Decimal color 13415346.



This preview shows how white text looks on a background with the Decimal color 13415346.

Color Blindness Simulation

Color vision deficiency is a very complex topic, and I could not describe the different causes any better than Wikipedia does, so if you want to learn more, you should check out their [article about color blindness](#).


Dichromacy



Original Color
13415346

Protanopia
12433589

Deuteranopia
13480882



Tritanopia
13545919

Trichromacy



Original Color
13415346

Protanomaly
12760756

Deuteranomaly
13480882

Tritanomaly
13480634

Monochromacy



Original Color
13415346

Achromatopsia
12237498

Achromatomaly
12695479

CSS Examples

Text

The CSS property to change the color of the text to Decimal 13415346 is called "color". The color property can be set on classes, ids or directly on the HTML element.

This example shows how text in the color #CCB3B2 looks like.

```
.text, #text, p{  
    color:#CCB3B2  
}
```

If you want to add a text shadow in that color use the text-shadow property, you can generate a text shadow directly with our [CSS Text Shadow Generator](#).

Here you see how black text with a 4 pixel #CCB3B2 colored shadow looks like.

```
.shadow{ text-shadow: 4px 4px 2px #CCB3B2
}
```

Border

The CSS property to change the border of an element to Decimal 13415346 is called "border". The border property can be set on classes, ids or directly on the HTML element.

This example shows the color as border, it can be applied via the CSS property "border" or "border-color".

```
.border, #border, table{ border:4px solid
#CCB3B2 }
```

If only the border color should be changed use the property `border-color`.

```
.border{ border-color:#CCB3B2 }
```

If you want to add a box shadow in that color use:

Here you see how a box with a 4 pixel #CCB3B2 colored shadow looks like.

```
.boxshadow{ -moz-box-shadow:4px 4px 4px  
4px #CCB3B2; -webkit-box-shadow:4px 4px  
4px 4px #CCB3B2; box-shadow:4px 4px 4px  
4px #CCB3B2 }
```

Background

The CSS property to change the background color of an element to Decimal 13415346 is called "background". The background property can be set on classes, ids or directly on the HTML element.

```
.background, #background, body{  
background:#CCB3B2 }
```

If only the background color should be changed can be used:

```
.background{ background-color:#CCB3B2 }
```

This example shows the color as background, it is applied via the CSS property "background".

To optimize and compress your CSS code, you can use our [online CSS compressor and optimizer](#) based on csstidy. If you want to create a linear or radial gradient as background or border, check our [CSS Gradient Generator](#).

Hey! You found this booklet interesting? Support Converting Colors with the new Membership Option!

The pro membership hides all ads, plus gives you double the colors in the color bucket, and more awesome pro features!

[Learn more, Memberships starting at \\$2.50/m!](#)

**Follow me
on Twitter!**

@ConvertingColor