

Converting Colors

Decimal(13416892)

Have a look what the booklet for
Decimal(13416892) contains.

Decimal(13416892)	3
<i>Conversions</i>	4
<i>Details</i>	6
<i>Harmonies</i>	11
<i>Previews</i>	23
<i>Color Blindness Simulation</i>	26
<i>CSS Examples</i>	29

Color

Decimal(13416892)

Conversions

Conversions Part 1

Format	Color
Hex	CCB9BC
RGB	204, 185, 188
RGB Percent	80%, 73%, 74%
CMY	0.2000, 0.2745, 0.2627
CMYK	0.00, 0.09, 0.08, 0.20
HSL	351°, 16%, 76%
HSV	351°, 9%, 80%
XYZ	51.3279, 51.1661, 54.7477
YIQ	191.0230, 10.3610, 4.9610

Conversions

Conversions Part 2

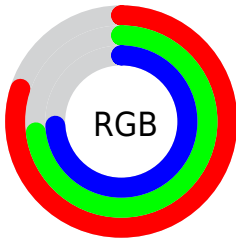
Format	Color
RYB	204, 185, 188
Decimal	13416892
CIELab	76.78, 7.26, 0.93
CIELCh	77, 7.317, 7.283
Yxy	51.1661, 0.3264, 0.3254
Android (android.graphics.Color)	4291606972 (0xFFCCB9BC)
YUV	191.0230, -1.4903, 11.3808
Hunter-Lab	71.5305, 2.9073, 4.6922

Details

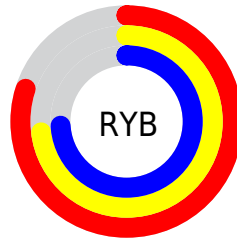
The Decimal color **13416892** is a light color, and the websafe version is hex **CCCCCC**. A complement of this color would be **12176585**, and the grayscale version is **12566463**.

A 20% lighter version of the original color is **16773620**, and **9864327** is the 20% darker color. If you saturate the color by 10%, you get **13411755**, and if you desaturate by 10%, it is **13422029**.

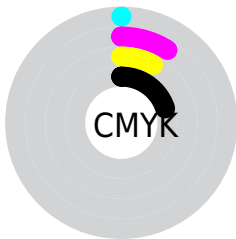
Distribution



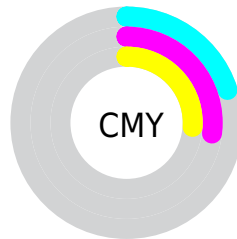
- Red (80%)
- Green (73%)
- Blue (74%)



- Red (80%)
- Yellow (73%)
- Blue (74%)



- Cyan (0%)
- Magenta (9%)
- Yellow (8%)
- Black (20%)



- Cyan (20%)
- Magenta (27%)
- Yellow (26%)

Brightness & Saturation Gradients

These gradients show how the Decimal color 13416892 changes by changing the brightness by 10 percent. The first figure shows a shift by +10% for each color and the second figure -10%.

Similar to the brightness gradients but the following saturation gradients show a change of the Decimal color 13416892 by changing the saturation by 10% instead.

 13416892

 13416892

16777215

 11640481

 16773620

 9864327

 8153966

 6509397

 4930366

 3417640

 2035988

 0

 13416892

 13416892

 13411755

 13422029

 13406362

 13427422

 13401224

 13432560

 13395831

 13434879

 13390694

 13385557

 13380164

 13375027

 13369633

Harmonies

Analogous

The Analogous color harmony consists of three colors that are next to each other on the color wheel.



13155011



13416892



13417142

Triad

The Triadic color harmony groups three colors that are evenly spaced from another and form a triangle on the color wheel.



13416892



12239027



11649226

Complementary

The Complementary color scheme is a pair of colors which are on the opposite of each other on the color wheel.



13416892



12176585

Split Complementary

Split-complementary colors differ from the complementary color scheme. The scheme consists of three colors, the original color and two neighbors of the complement color.



11387333



13416892



11715000

Square

The Square scheme is like the rectangle color scheme, but the four colors are evenly spaced on the color wheel.



13416892



12762800



11453119



12172747

Rectangle

The Rectangle color scheme consists of four colors that form a rectangle on the color wheel.



13416892



13286322



11453119



11583689

Sweetspot

The Sweet Spot groups the original color and five complimentary colors.



13416892



16775161



13220300



8419963



0



8421504

Same Dimension

The Same Dimension uses a secret algorithm to generate beautiful new colors.



13416892



16770023



13418425



6708317



10879002



2490374

Inverse Universe

The Inverse Universe completely reimagines the original color for something new.



13416892



16770023



12175052



6708317



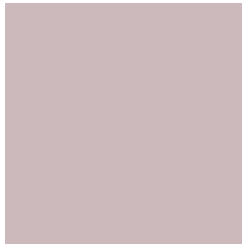
10879002



2490374

Previews

White Background



This preview shows how the Decimal color 13416892 looks on a white background.

Color Contrast Check

Large Text (above 18pt) WCAG AA × Fail

Any Text WCAG AA × Fail

Large Text (above 18pt) WCAG AAA × Fail

Any Text WCAG AAA × Fail

Black Background



This preview shows how the Decimal color 13416892 looks on a black background.

Color Contrast Check

Large Text (above 18pt) WCAG AA ✓ Pass

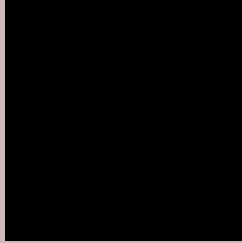
Any Text WCAG AA ✓ Pass

Large Text (above 18pt) WCAG AAA ✓ Pass

Any Text WCAG AAA ✓ Pass

If you want to check with other color combinations, try the [Color Contrast Checker](#).

Decimal 13416892 Background



This preview shows how black text looks on a background with the Decimal color 13416892.




This preview shows how white text looks on a background with the Decimal color 13416892.

Color Blindness Simulation

Color vision deficiency is a very complex topic, and I could not describe the different causes any better than Wikipedia does, so if you want to learn more, you should check out their [article about color blindness](#).

Dichromacy





Tritanopia
13481926

Trichromacy



Original Color
13416892

Protanomaly
12958909

Deuteranomaly
13613244

Tritanomaly
13482178

Monochromacy



Original Color
13416892

Achromatopsia
12566463

Achromatomaly
12893630

CSS Examples

Text

The CSS property to change the color of the text to Decimal 13416892 is called "color". The color property can be set on classes, ids or directly on the HTML element.

This example shows how text in the color #CCB9BC looks like.

```
.text, #text, p{  
    color:#CCB9BC  
}
```

If you want to add a text shadow in that color use the text-shadow property, you can generate a text shadow directly with our [CSS Text Shadow Generator](#).

Here you see how black text with a 4 pixel #CCB9BC colored shadow looks like.

```
.shadow{ text-shadow: 4px 4px 2px #CCB9BC
}
```

Border

The CSS property to change the border of an element to Decimal 13416892 is called "border". The border property can be set on classes, ids or directly on the HTML element.

This example shows the color as border, it can be applied via the CSS property "border" or "border-color".

```
.border, #border, table{ border:4px solid
#CCB9BC }
```

If only the border color should be changed use the property `border-color`.

```
.border{ border-color:#CCB9BC }
```

If you want to add a box shadow in that color use:

Here you see how a box with a 4 pixel #CCB9BC colored shadow looks like.

```
.boxshadow{ -moz-box-shadow:4px 4px 4px  
4px #CCB9BC; -webkit-box-shadow:4px 4px  
4px 4px #CCB9BC; box-shadow:4px 4px 4px  
4px #CCB9BC }
```

Background

The CSS property to change the background color of an element to Decimal 13416892 is called "background". The background property can be set on classes, ids or directly on the HTML element.

```
.background, #background, body{  
background:#CCB9BC }
```

If only the background color should be changed can be used:

```
.background{ background-color:#CCB9BC }
```

This example shows the color as background, it is applied via the CSS property "background".

To optimize and compress your CSS code, you can use our [online CSS compressor and optimizer](#) based on csstidy. If you want to create a linear or radial gradient as background or border, check our [CSS Gradient Generator](#).

Hey! You found this booklet interesting? Support Converting Colors with the new Membership Option!

The pro membership hides all ads, plus gives you double the colors in the color bucket, and more awesome pro features!

[Learn more, Memberships starting at \\$2.50/m!](#)

**Follow me
on Twitter!**

@ConvertingColor