

Converting Colors

Decimal(13470581)

Have a look what the booklet for
Decimal(13470581) contains.

Decimal(13470581)	3
<i>Conversions</i>	4
<i>Details</i>	6
<i>Harmonies</i>	11
<i>Previews</i>	23
<i>Color Blindness Simulation</i>	26
<i>CSS Examples</i>	29

Color

Decimal(13470581)

Conversions

Conversions Part 1

Format	Color
Hex	CD8B75
RGB	205, 139, 117
RGB Percent	80%, 55%, 46%
CMY	0.1961, 0.4549, 0.5412
CMYK	0.00, 0.32, 0.43, 0.20
HSL	15°, 47%, 63%
HSV	15°, 43%, 80%
XYZ	37.6203, 32.7287, 21.1641
YIQ	156.2260, 46.3980, 7.1500

Conversions

Conversions Part 2

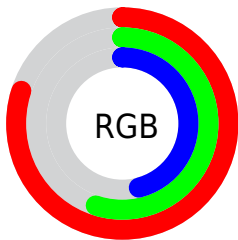
Format	Color
R_{YB}	205, 146, 117
Decimal	13470581
CIE Lab	63.94, 22.54, 21.98
CIE LCh	64, 31.479, 44.273
Yxy	32.7287, 0.4111, 0.3576
Android (android.graphics.Color)	4291660661 (0xFFCD8B75)
YUV	156.2260, -19.3384, 42.7748
Hunter-Lab	57.2090, 17.2648, 18.1124

Details

The Decimal color **13470581** is a light color, and the websafe version is hex **CC9999**. A complement of this color would be **7714765**, and the grayscale version is **10263708**.

A 20% lighter version of the original color is **16761257**, and **9721925** is the 20% darker color. If you saturate the color by 10%, you get **13466721**, and if you desaturate by 10%, it is **13474442**.

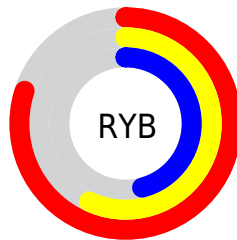
Distribution



Red (80%)

Green (55%)

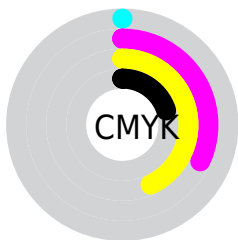
Blue (46%)



Red (80%)

Yellow (57%)

Blue (46%)

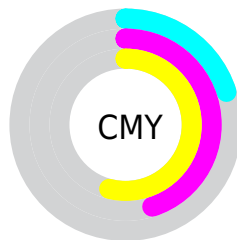


Cyan (0%)

Magenta (32%)

Yellow (43%)

Black (20%)



Cyan (20%)

Magenta (45%)

Yellow (54%)

Brightness & Saturation Gradients

These gradients show how the Decimal color 13470581 changes by changing the brightness by 10 percent. The first figure shows a shift by +10% for each color and the second figure -10%.

Similar to the brightness gradients but the following saturation gradients show a change of the Decimal color 13470581 by changing the saturation by 10% instead.

 13470581  13470581

16777215  11563356

 16761257  9721925

 16768452  7946542

 16775905  6171161

16777213  4526848

 2883584

 0

 13470581  13470581

 13466721  13474442

■ 13462604

■ 13478558

■ 13458743

■ 13482419

■ 13454627

■ 13486535

■ 13450766

■ 13490396

■ 13447936

■ 13494256

■ 13498367

■ 13500415

Harmonies

Analogous

The Analogous color harmony consists of three colors that are next to each other on the color wheel.



13797006



13470581



12293221

Triad

The Triadic color harmony groups three colors that are evenly spaced from another and form a triangle on the color wheel.



13470581



6269323



9017809

Complementary

The Complementary color scheme is a pair of colors which are on the opposite of each other on the color wheel.



13470581



7714765

Split Complementary

Split-complementary colors differ from the complementary color scheme. The scheme consists of three colors, the original color and two neighbors of the complement color.



6136528



13470581



4237992

Square

The Square scheme is like the rectangle color scheme, but the four colors are evenly spaced on the color wheel.



13470581



8496498



3844289



11505603

Rectangle

The Rectangle color scheme consists of four colors that form a rectangle on the color wheel.



13470581



11180643



3844289



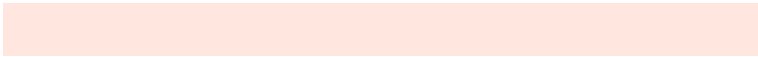
8101075

Sweetspot

The Sweet Spot groups the original color and five complimentary colors.



13470581



16770782



13465015



8417387



0



8421504

Same Dimension

The Same Dimension uses a secret algorithm to generate beautiful new colors.



13470581



16751738



13481589



6708828



10889472



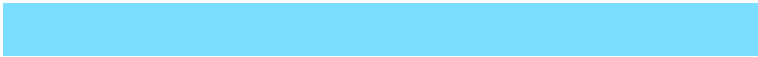
2492928

Inverse Universe

The Inverse Universe completely reimagines the original color for something new.



7714765



8052479



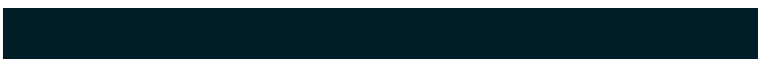
7703501



6054758



31910



7462

Previews

White Background



This preview shows how the Decimal color 13470581 looks on a white background.

Color Contrast Check

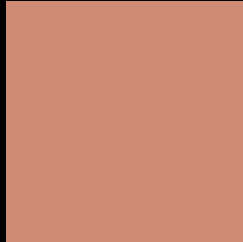
Large Text (above 18pt) WCAG AA × Fail

Any Text WCAG AA × Fail

Large Text (above 18pt) WCAG AAA × Fail

Any Text WCAG AAA × Fail

Black Background



This preview shows how the Decimal color 13470581 looks on a black background.

Color Contrast Check

Large Text (above 18pt) WCAG AA ✓ Pass

Any Text WCAG AA ✓ Pass

Large Text (above 18pt) WCAG AAA ✓ Pass

Any Text WCAG AAA ✓ Pass

If you want to check with other color combinations, try the [Color Contrast Checker](#).

Decimal 13470581 Background



This preview shows how black text looks on a background with the Decimal color 13470581.



This preview shows how white text looks on a background with the Decimal color 13470581.

Color Blindness Simulation

Color vision deficiency is a very complex topic, and I could not describe the different causes any better than Wikipedia does, so if you want to learn more, you should check out their [article about color blindness](#).


Dichromacy



Original Color
13470581

Protanopia
10853244

Deuteranopia
12031347



Tritanopia
13600657

Trichromacy



Original Color
13470581

Protanomaly
11834745

Deuteranomaly
12554612

Tritanomaly
13535367

Monochromacy



Original Color
13470581

Achromatopsia
10263708

Achromatomaly
11441806

CSS Examples

Text

The CSS property to change the color of the text to Decimal 13470581 is called "color". The color property can be set on classes, ids or directly on the HTML element.

This example shows how text in the color #CD8B75 looks like.

```
.text, #text, p{  
    color:#CD8B75  
}
```

If you want to add a text shadow in that color use the text-shadow property, you can generate a text shadow directly with our [CSS Text Shadow Generator](#).

Here you see how black text with a 4 pixel #CD8B75 colored shadow looks like.

```
.shadow{ text-shadow: 4px 4px 2px #CD8B75
}
```

Border

The CSS property to change the border of an element to Decimal 13470581 is called "border". The border property can be set on classes, ids or directly on the HTML element.

This example shows the color as border, it can be applied via the CSS property "border" or "border-color".

```
.border, #border, table{ border:4px solid
#CD8B75 }
```

If only the border color should be changed use the property `border-color`.

```
.border{ border-color:#CD8B75 }
```

If you want to add a box shadow in that color use:

Here you see how a box with a 4 pixel #CD8B75 colored shadow looks like.

```
.boxshadow{ -moz-box-shadow:4px 4px 4px  
4px #CD8B75; -webkit-box-shadow:4px 4px  
4px 4px #CD8B75; box-shadow:4px 4px 4px  
4px #CD8B75 }
```

Background

The CSS property to change the background color of an element to Decimal 13470581 is called "background". The background property can be set on classes, ids or directly on the HTML element.

```
.background, #background, body{  
background:#CD8B75 }
```

If only the background color should be changed can be used:

```
.background{ background-color:#CD8B75 }
```

This example shows the color as background, it is applied via the CSS property "background".

To optimize and compress your CSS code, you can use our [online CSS compressor and optimizer](#) based on csstidy. If you want to create a linear or radial gradient as background or border, check our [CSS Gradient Generator](#).

Hey! You found this booklet interesting? Support Converting Colors with the new Membership Option!

The pro membership hides all ads, plus gives you double the colors in the color bucket, and more awesome pro features!

[Learn more, Memberships starting at \\$2.50/m!](#)

**Follow me
on Twitter!**

@ConvertingColor