

Converting Colors

Decimal(13471635)

Have a look what the booklet for
Decimal(13471635) contains.

Decimal(13471635)	3
<i>Conversions</i>	4
<i>Details</i>	6
<i>Harmonies</i>	11
<i>Previews</i>	23
<i>Color Blindness Simulation</i>	26
<i>CSS Examples</i>	29

Color

Decimal(13471635)

Conversions

Conversions Part 1

Format	Color
Hex	CD8F93
RGB	205, 143, 147
RGB Percent	80%, 56%, 58%
CMY	0.1961, 0.4392, 0.4235
CMYK	0.00, 0.30, 0.28, 0.20
HSL	356°, 38%, 68%
HSV	356°, 30%, 80%
XYZ	40.2658, 34.7306, 32.1852
YIQ	161.9940, 35.6680, 14.3880

Conversions

Conversions Part 2

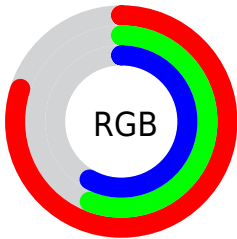
Format	Color
RYB	205, 143, 147
Decimal	13471635
CIELab	65.54, 24.06, 7.36
CIELCh	66, 25.163, 16.997
Yxy	34.7306, 0.3757, 0.3240
Android (android.graphics.Color)	4291661715 (0xFFCD8F93)
YUV	161.9940, -7.3920, 37.7163
Hunter-Lab	58.9327, 18.8278, 8.8726

Details

The Decimal color **13471635** is a light color, and the websafe version is hex **CC9999**. A complement of this color would be **9424329**, and the grayscale version is **10658466**.

A 20% lighter version of the original color is **16762313**, and **9788513** is the 20% darker color. If you saturate the color by 10%, you get **13466240**, and if you desaturate by 10%, it is **13476774**.

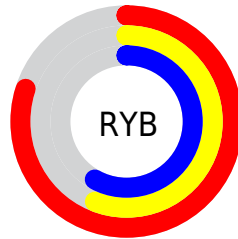
Distribution



Red (80%)

Green (56%)

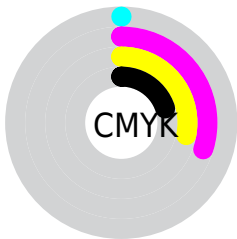
Blue (58%)



Red (80%)

Yellow (56%)

Blue (58%)

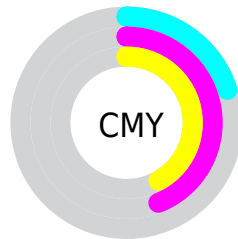


Cyan (0%)

Magenta (30%)

Yellow (28%)

Black (20%)



Cyan (20%)

Magenta (44%)

Yellow (42%)

Brightness & Saturation Gradients

These gradients show how the Decimal color 13471635 changes by changing the brightness by 10 percent. The first figure shows a shift by +10% for each color and the second figure -10%.

Similar to the brightness gradients but the following saturation gradients show a change of the Decimal color 13471635 by changing the saturation by 10% instead.

 13471635

 13471635

16777215

 11629945

 16762313

 9788513

 16769509

 8012873

16776959

 6303026

 4658717

 3145731

 786432

 0

 13471635

 13471635

 13466240

 13476774

 13461101

 13482169

 13455705

 13487565

 13450566

 13492704

 13445171

 13498099

 13440032

 13500415

 13434893

Harmonies

Analogous

The Analogous color harmony consists of three colors that are next to each other on the color wheel.



13013162



13471635



13144959

Triad

The Triadic color harmony groups three colors that are evenly spaced from another and form a triangle on the color wheel.



13471635



9021568



7775435

Complementary

The Complementary color scheme is a pair of colors which are on the opposite of each other on the color wheel.



13471635



9424329

Split Complementary

Split-complementary colors differ from the complementary color scheme. The scheme consists of three colors, the original color and two neighbors of the complement color.



6269375



13471635



7383956

Square

The Square scheme is like the rectangle color scheme, but the four colors are evenly spaced on the color wheel.



13471635



10658420



6204587



9805258

Rectangle

The Rectangle color scheme consists of four colors that form a rectangle on the color wheel.



13471635



12556406



6204587



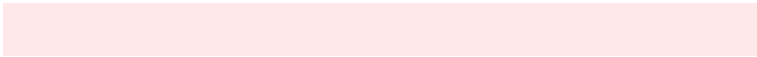
7120584

Sweetspot

The Sweet Spot groups the original color and five complimentary colors.



13471635



16771306



13209549



8417650



0



8421504

Same Dimension

The Same Dimension uses a secret algorithm to generate beautiful new colors.



13471635



16753577



13478543



6708316



10878987



2490370

Inverse Universe

The Inverse Universe completely reimagines the original color for something new.



13471635



16753577



9417421



6708316



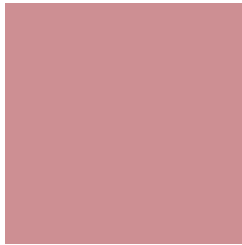
10878987



2490370

Previews

White Background



This preview shows how the Decimal color 13471635 looks on a white background.

Color Contrast Check

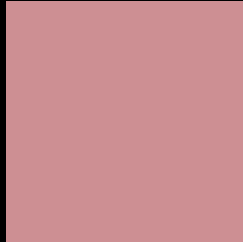
Large Text (above 18pt) WCAG AA × Fail

Any Text WCAG AA × Fail

Large Text (above 18pt) WCAG AAA × Fail

Any Text WCAG AAA × Fail

Black Background



This preview shows how the Decimal color 13471635 looks on a black background.

Color Contrast Check

Large Text (above 18pt) WCAG AA ✓ Pass

Any Text WCAG AA ✓ Pass

Large Text (above 18pt) WCAG AAA ✓ Pass

Any Text WCAG AAA ✓ Pass

If you want to check with other color combinations, try the [Color Contrast Checker](#).

Decimal 13471635 Background



This preview shows how black text looks on a background with the Decimal color 13471635.




This preview shows how white text looks on a background with the Decimal color 13471635.

Color Blindness Simulation

Color vision deficiency is a very complex topic, and I could not describe the different causes any better than Wikipedia does, so if you want to learn more, you should check out their [article about color blindness](#).

Dichromacy





Tritanopia
13536921

Trichromacy



Original Color
13471635

Protanomaly
11704729

Deuteranomaly
12424850

Tritanomaly
13536919

Monochromacy



Original Color
13471635

Achromatopsia
10658466

Achromatomaly
11705245

CSS Examples

Text

The CSS property to change the color of the text to Decimal 13471635 is called "color". The color property can be set on classes, ids or directly on the HTML element.

This example shows how text in the color #CD8F93 looks like.

```
.text, #text, p{  
    color:#CD8F93  
}
```

If you want to add a text shadow in that color use the text-shadow property, you can generate a text shadow directly with our [CSS Text Shadow Generator](#).

Here you see how black text with a 4 pixel #CD8F93 colored shadow looks like.

```
.shadow{ text-shadow: 4px 4px 2px #CD8F93
}
```

Border

The CSS property to change the border of an element to Decimal 13471635 is called "border". The border property can be set on classes, ids or directly on the HTML element.

This example shows the color as border, it can be applied via the CSS property "border" or "border-color".

```
.border, #border, table{ border:4px solid
#CD8F93 }
```

If only the border color should be changed use the property `border-color`.

```
.border{ border-color:#CD8F93 }
```

If you want to add a box shadow in that color use:

Here you see how a box with a 4 pixel #CD8F93 colored shadow looks like.

```
.boxshadow{ -moz-box-shadow:4px 4px 4px  
4px #CD8F93; -webkit-box-shadow:4px 4px  
4px 4px #CD8F93; box-shadow:4px 4px 4px  
4px #CD8F93 }
```

Background

The CSS property to change the background color of an element to Decimal 13471635 is called "background". The background property can be set on classes, ids or directly on the HTML element.

```
.background, #background, body{  
background:#CD8F93 }
```

If only the background color should be changed can be used:

```
.background{ background-color:#CD8F93 }
```

This example shows the color as background, it is applied via the CSS property "background".

To optimize and compress your CSS code, you can use our [online CSS compressor and optimizer](#) based on csstidy. If you want to create a linear or radial gradient as background or border, check our [CSS Gradient Generator](#).

Hey! You found this booklet interesting? Support Converting Colors with the new Membership Option!

The pro membership hides all ads, plus gives you double the colors in the color bucket, and more awesome pro features!

[Learn more, Memberships starting at \\$2.50/m!](#)

**Follow me
on Twitter!**

@ConvertingColor