

# Converting Colors

Decimal(13472630)

Have a look what the booklet for  
Decimal(13472630) contains.

<b>Decimal(13472630)</b> .....	3
<b><i>Conversions</i></b> .....	4
<b><i>Details</i></b> .....	6
<b><i>Harmonies</i></b> .....	11
<b><i>Previews</i></b> .....	23
<b><i>Color Blindness Simulation</i></b> .....	26
<b><i>CSS Examples</i></b> .....	29

# **Color**

**Decimal(13472630)**

# Conversions

## Conversions Part 1

<b>Format</b>	<b>Color</b>
Hex	CD9376
RGB	205, 147, 118
RGB Percent	80%, 58%, 46%
CMY	0.1961, 0.4235, 0.5373
CMYK	0.00, 0.28, 0.42, 0.20
HSL	20°, 47%, 63%
HSV	20°, 42%, 80%
XYZ	38.8806, 35.1546, 21.8758
YIQ	161.0360, 43.8770, 3.2770

# Conversions

## Conversions Part 2

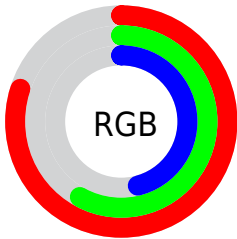
Format	Color
R <sub>Y</sub> B	205, 162, 118
Decimal	13472630
CIE Lab	65.87, 18.28, 24.02
CIE LCh	66, 30.183, 52.718
Yxy	35.1546, 0.4054, 0.3665
Android (android.graphics.Color)	4291662710 (0xFFCD9376)
YUV	161.0360, -21.2167, 38.5564
Hunter-Lab	59.2913, 13.2925, 19.6286

# Details

The Decimal color **13472630** is a light color, and the websafe version is hex **CC9966**. A complement of this color would be **7778509**, and the grayscale version is **10592673**.

A 20% lighter version of the original color is **16763306**, and **9789509** is the 20% darker color. If you saturate the color by 10%, you get **13469026**, and if you desaturate by 10%, it is **13476235**.

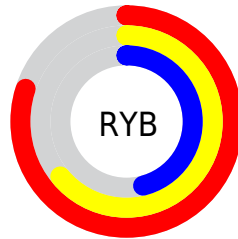
# Distribution



Red (80%)

Green (58%)

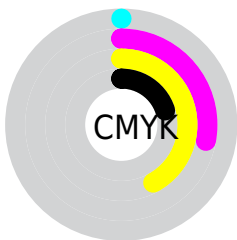
Blue (46%)



Red (80%)

Yellow (64%)

Blue (46%)

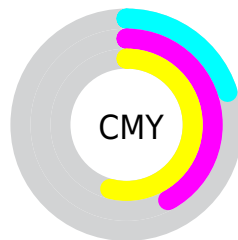


Cyan (0%)

Magenta (28%)

Yellow (42%)

Black (20%)



Cyan (20%)

Magenta (42%)

Yellow (54%)

# Brightness & Saturation Gradients

These gradients show how the Decimal color 13472630 changes by changing the brightness by 10 percent. The first figure shows a shift by +10% for each color and the second figure -10%.

Similar to the brightness gradients but the following saturation gradients show a change of the Decimal color 13472630 by changing the saturation by 10% instead.



 13472630

 13472630

16777215

 11565405

 16763306

 9789509

 16770502

 7948335

 16777186

 6238489

16777214

 4528896

 2885120

 65536

 0

 13472630

 13472630

 13469026

 13476235

 13465677

 13479583

 13462073

 13483188

 13458468

 13486792

 13455120

 13490141

 13452288

 13493745

 13497343

 13500415

# Harmonies

## Analogous

The Analogous color harmony consists of three colors that are next to each other on the color wheel.



14060940



13472630



12164202

# Triad

The Triadic color harmony groups three colors that are evenly spaced from another and form a triangle on the color wheel.



13472630



6270616



10197970

# Complementary

The Complementary color scheme is a pair of colors which are on the opposite of each other on the color wheel.



13472630



7778509

# Split Complementary

Split-complementary colors differ from the complementary color scheme. The scheme consists of three colors, the original color and two neighbors of the complement color.



7513557



13472630



4698036

# Square

The Square scheme is like the rectangle color scheme, but the four colors are evenly spaced on the color wheel.



13472630



8301438



5155786



12358337

# Rectangle

The Rectangle color scheme consists of four colors that form a rectangle on the color wheel.



13472630



10986091



5155786



9281493

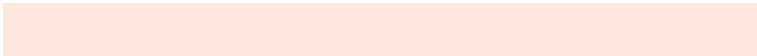


# Sweetspot

The Sweet Spot groups the original color and five complimentary colors.



13472630



16771550



13465264



8417899



0



8421504



# Same Dimension

The Same Dimension uses a secret algorithm to generate beautiful new colors.



13472630



16754813



13483382



6709084



10893056



2493696

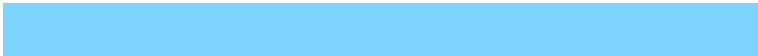


# Inverse Universe

The Inverse Universe completely reimagines the original color for something new.



7778509



8246527



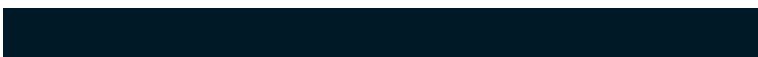
7767501



6054758



28326



6438



# Previews

## White Background



This preview shows how the Decimal color 13472630 looks on a white background.

## Color Contrast Check

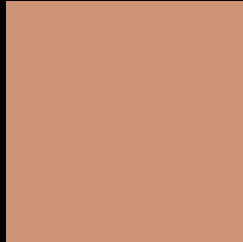
Large Text (above 18pt) WCAG AA × Fail

Any Text WCAG AA × Fail

Large Text (above 18pt) WCAG AAA × Fail

Any Text WCAG AAA × Fail

# Black Background



This preview shows how the Decimal color 13472630 looks on a black background.

## Color Contrast Check

Large Text (above 18pt) WCAG AA ✓ Pass

Any Text WCAG AA ✓ Pass

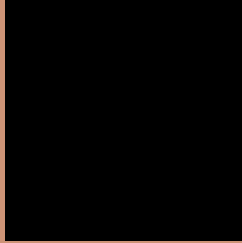
Large Text (above 18pt) WCAG AAA ✓ Pass

Any Text WCAG AAA ✓ Pass

If you want to check with other color combinations, try the [Color Contrast Checker](#).



## Decimal 13472630 Background



This preview shows how black text looks on a background with the Decimal color 13472630.




This preview shows how white text looks on a background with the Decimal color 13472630.

# Color Blindness Simulation

Color vision deficiency is a very complex topic, and I could not describe the different causes any better than Wikipedia does, so if you want to learn more, you should check out their [article about color blindness](#).

## Dichromacy





**Tritanopia**  
13667993

# Trichromacy



**Original Color**  
13472630

**Protanomaly**  
12032890

**Deuteranomaly**  
12818293

**Tritanomaly**  
13602956

# Monochromacy



**Original Color**  
13472630

**Achromatopsia**  
10592673

**Achromatomaly**  
11639953

# CSS Examples

## Text

The CSS property to change the color of the text to Decimal 13472630 is called "color". The color property can be set on classes, ids or directly on the HTML element.

This example shows how text in the color #CD9376 looks like.

```
.text, #text, p{  
    color:#CD9376  
}
```

If you want to add a text shadow in that color use the text-shadow property, you can generate a text shadow directly with our [CSS Text Shadow Generator](#).

Here you see how black text with a 4 pixel #CD9376 colored shadow looks like.

```
.shadow{ text-shadow: 4px 4px 2px #CD9376
}
```

## Border

The CSS property to change the border of an element to Decimal 13472630 is called "border". The border property can be set on classes, ids or directly on the HTML element.

This example shows the color as border, it can be applied via the CSS property "border" or "border-color".

```
.border, #border, table{ border:4px solid
#CD9376 }
```

If only the border color should be changed use the property `border-color`.

```
.border{ border-color:#CD9376 }
```

If you want to add a box shadow in that color use:

Here you see how a box with a 4 pixel #CD9376 colored shadow looks like.

```
.boxshadow{ -moz-box-shadow:4px 4px 4px  
4px #CD9376; -webkit-box-shadow:4px 4px  
4px 4px #CD9376; box-shadow:4px 4px 4px  
4px #CD9376 }
```

# Background

The CSS property to change the background color of an element to Decimal 13472630 is called "background". The background property can be set on classes, ids or directly on the HTML element.

```
.background, #background, body{  
background:#CD9376 }
```

If only the background color should be changed can be used:

```
.background{ background-color:#CD9376 }
```

This example shows the color as background, it is applied via the CSS property "background".

To optimize and compress your CSS code, you can use our [online CSS compressor and optimizer](#) based on csstidy. If you want to create a linear or radial gradient as background or border, check our [CSS Gradient Generator](#).



Hey! You found this booklet interesting? Support Converting Colors with the new Membership Option!

The pro membership hides all ads, plus gives you double the colors in the color bucket, and more awesome pro features!

**[Learn more, Memberships starting at \\$2.50/m!](#)**

**Follow me  
on Twitter!**

@ConvertingColor