

Converting Colors

Decimal(13479843)

Have a look what the booklet for
Decimal(13479843) contains.

Decimal(13479843)	3
<i>Conversions</i>	4
<i>Details</i>	6
<i>Harmonies</i>	11
<i>Previews</i>	23
<i>Color Blindness Simulation</i>	26
<i>CSS Examples</i>	29

Color

Decimal(13479843)

Conversions

Conversions Part 1

Format	Color
Hex	CDAFA3
RGB	205, 175, 163
RGB Percent	80%, 69%, 64%
CMY	0.1961, 0.3137, 0.3608
CMYK	0.00, 0.15, 0.20, 0.20
HSL	17°, 30%, 72%
HSV	17°, 20%, 80%
XYZ	47.1177, 46.2834, 41.1006
YIQ	182.6020, 21.7320, 2.6280

Conversions

Conversions Part 2

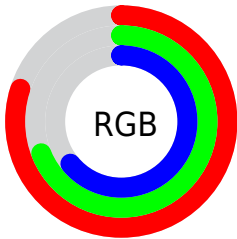
Format	Color
RYB	205, 180, 163
Decimal	13479843
CIELab	73.73, 8.95, 10.16
CIELCh	74, 13.545, 48.620
Yxy	46.2834, 0.3503, 0.3441
Android (android.graphics.Color)	4291669923 (0xFFCDAFA3)
YUV	182.6020, -9.6638, 19.6430
Hunter-Lab	68.0319, 4.5700, 11.8031

Details

The Decimal color **13479843** is a light color, and the websafe version is hex **CC9999**. A complement of this color would be **10731981**, and the grayscale version is **12040119**.

A 20% lighter version of the original color is **16771034**, and **9861999** is the 20% darker color. If you saturate the color by 10%, you get **13475983**, and if you desaturate by 10%, it is **13483704**.

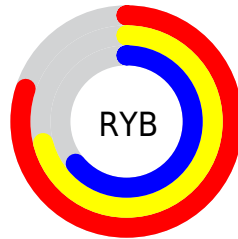
Distribution



Red (80%)

Green (69%)

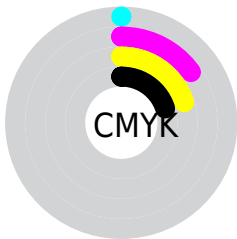
Blue (64%)



Red (80%)

Yellow (71%)

Blue (64%)

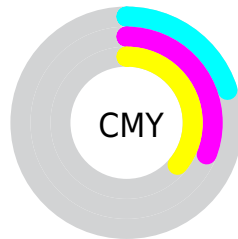


Cyan (0%)

Magenta (15%)

Yellow (20%)

Black (20%)



Cyan (20%)

Magenta (31%)

Yellow (36%)

Brightness & Saturation Gradients

These gradients show how the Decimal color 13479843 changes by changing the brightness by 10 percent. The first figure shows a shift by +10% for each color and the second figure -10%.

Similar to the brightness gradients but the following saturation gradients show a change of the Decimal color 13479843 by changing the saturation by 10% instead.

 13479843

 13479843

16777215

 11637897


 16771034

 9861999

 16777206

 8151639

 6507072

 4862762

 3350037

 2033152

 0

 13479843

 13479843

 13475983

 13483704

 13472378

 13487308

 13468517

 13491168

 13464657

 13495029

 13461052

 13498623

 13457192

 13500415

 13453587

 13449984

Harmonies

Analogous

The Analogous color harmony consists of three colors that are next to each other on the color wheel.



13675950



13479843



12891037

Triad

The Triadic color harmony groups three colors that are evenly spaced from another and form a triangle on the color wheel.



13479843



10271920



11711693

Complementary

The Complementary color scheme is a pair of colors which are on the opposite of each other on the color wheel.



13479843



10731981

Split Complementary

Split-complementary colors differ from the complementary color scheme. The scheme consists of three colors, the original color and two neighbors of the complement color.



10664141



13479843



9878717

Square

The Square scheme is like the rectangle color scheme, but the four colors are evenly spaced on the color wheel.



13479843



11123364



10009543



12693702

Rectangle

The Rectangle color scheme consists of four colors that form a rectangle on the color wheel.



13479843



12367261



10009543



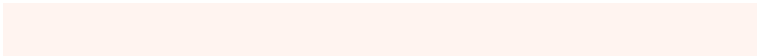
11318733

Sweetspot

The Sweet Spot groups the original color and five complimentary colors.



13479843



16774384



13476801



8419703



0



8421504

Same Dimension

The Same Dimension uses a secret algorithm to generate beautiful new colors.



13479843



16765375



13485219



6709084



10891008



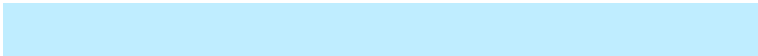
2493184

Inverse Universe

The Inverse Universe completely reimagines the original color for something new.



10731981



12578303



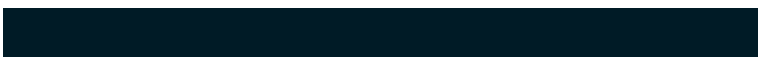
10726605



6054758



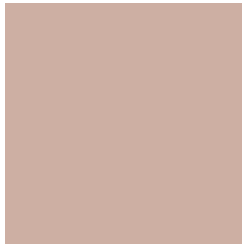
30374



6950

Previews

White Background



This preview shows how the Decimal color 13479843 looks on a white background.

Color Contrast Check

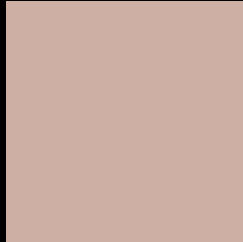
Large Text (above 18pt) WCAG AA × Fail

Any Text WCAG AA × Fail

Large Text (above 18pt) WCAG AAA × Fail

Any Text WCAG AAA × Fail

Black Background



This preview shows how the Decimal color 13479843 looks on a black background.

Color Contrast Check

Large Text (above 18pt) WCAG AA ✓ Pass

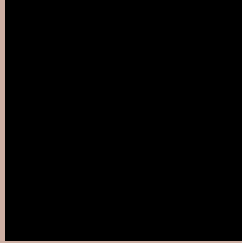
Any Text WCAG AA ✓ Pass

Large Text (above 18pt) WCAG AAA ✓ Pass

Any Text WCAG AAA ✓ Pass

If you want to check with other color combinations, try the [Color Contrast Checker](#).

Decimal 13479843 Background



This preview shows how black text looks on a background with the Decimal color 13479843.



This preview shows how white text looks on a background with the Decimal color 13479843.

Color Blindness Simulation

Color vision deficiency is a very complex topic, and I could not describe the different causes any better than Wikipedia does, so if you want to learn more, you should check out their [article about color blindness](#).

Dichromacy

	Original Color 13479843
	Protanopia 12367270
	Deuteranopia 13545379



Tritanopia
13675705

Trichromacy



Original Color
13479843

Protanomaly
12759973

Deuteranomaly
13545379

Tritanomaly
13610417

Monochromacy



Original Color
13479843

Achromatopsia
12040119

Achromatomaly
12563632

CSS Examples

Text

The CSS property to change the color of the text to Decimal 13479843 is called "color". The color property can be set on classes, ids or directly on the HTML element.

This example shows how text in the color #CDAFA3 looks like.

```
.text, #text, p{  
    color:#CDAFA3  
}
```

If you want to add a text shadow in that color use the text-shadow property, you can generate a text shadow directly with our [CSS Text Shadow Generator](#).

Here you see how black text with a 4 pixel #CDAFA3 colored shadow looks like.

```
.shadow{ text-shadow: 4px 4px 2px #CDAFA3  
}
```

Border

The CSS property to change the border of an element to Decimal 13479843 is called "border". The border property can be set on classes, ids or directly on the HTML element.

This example shows the color as border, it can be applied via the CSS property "border" or "border-color".

```
.border, #border, table{ border:4px solid  
#CDAFA3 }
```

If only the border color should be changed use the property `border-color`.

```
.border{ border-color:#CDAFA3 }
```

If you want to add a box shadow in that color use:

Here you see how a box with a 4 pixel #CDAFA3 colored shadow looks like.

```
.boxshadow{ -moz-box-shadow:4px 4px 4px  
4px #CDAFA3; -webkit-box-shadow:4px 4px  
4px 4px #CDAFA3; box-shadow:4px 4px 4px  
4px #CDAFA3 }
```

Background

The CSS property to change the background color of an element to Decimal 13479843 is called "background". The background property can be set on classes, ids or directly on the HTML element.

```
.background, #background, body{  
background:#CDAFA3 }
```

If only the background color should be changed can be used:

```
.background{ background-color:#CDAFA3 }
```

This example shows the color as background, it is applied via the CSS property "background".

To optimize and compress your CSS code, you can use our [online CSS compressor and optimizer](#) based on csstidy. If you want to create a linear or radial gradient as background or border, check our [CSS Gradient Generator](#).

Hey! You found this booklet interesting? Support Converting Colors with the new Membership Option!

The pro membership hides all ads, plus gives you double the colors in the color bucket, and more awesome pro features!

[Learn more, Memberships starting at \\$2.50/m!](#)

**Follow me
on Twitter!**

@ConvertingColor