

Converting Colors

Decimal(13479852)

Have a look what the booklet for
Decimal(13479852) contains.

Decimal(13479852)	3
<i>Conversions</i>	4
<i>Details</i>	6
<i>Harmonies</i>	11
<i>Previews</i>	23
<i>Color Blindness Simulation</i>	26
<i>CSS Examples</i>	29

Color

Decimal(13479852)

Conversions

Conversions Part 1

Format	Color
Hex	CDAFAC
RGB	205, 175, 172
RGB Percent	80%, 69%, 67%
CMY	0.1961, 0.3137, 0.3255
CMYK	0.00, 0.15, 0.16, 0.20
HSL	5°, 25%, 74%
HSV	5°, 16%, 80%
XYZ	47.9532, 46.6176, 45.5004
YIQ	183.6280, 18.8430, 5.4270

Conversions

Conversions Part 2

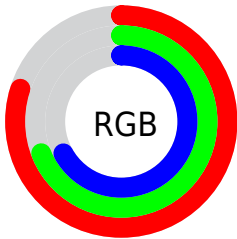
Format	Color
RYB	205, 175, 172
Decimal	13479852
CIELab	73.94, 10.35, 5.55
CIELCh	74, 11.746, 28.205
Yxy	46.6176, 0.3423, 0.3328
Android (android.graphics.Color)	4291669932 (0xFFCDAFAC)
YUV	183.6280, -5.7326, 18.7432
Hunter-Lab	68.2771, 5.8813, 8.2826

Details

The Decimal color **13479852** is a light color, and the websafe version is hex **CC9999**. A complement of this color would be **11324109**, and the grayscale version is **12105912**.

A 20% lighter version of the original color is **16771043**, and **9862008** is the 20% darker color. If you saturate the color by 10%, you get **13474968**, and if you desaturate by 10%, it is **13484737**.

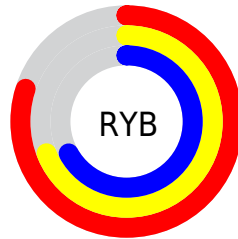
Distribution



Red (80%)

Green (69%)

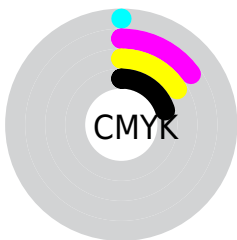
Blue (67%)



Red (80%)

Yellow (69%)

Blue (67%)

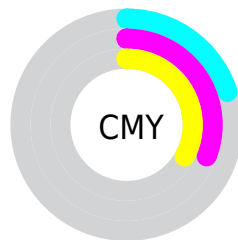


Cyan (0%)

Magenta (15%)

Yellow (16%)

Black (20%)



Cyan (20%)

Magenta (31%)

Yellow (33%)

Brightness & Saturation Gradients

These gradients show how the Decimal color 13479852 changes by changing the brightness by 10 percent. The first figure shows a shift by +10% for each color and the second figure -10%.

Similar to the brightness gradients but the following saturation gradients show a change of the Decimal color 13479852 by changing the saturation by 10% instead.

■ 13479852

■ 13479852

16777215

■ 11637905

■ 16771043

■ 9862008

■ 8151647

■ 6507079

■ 4928305

■ 3350044

■ 2098689

■ 0

■ 13479852

■ 13479852

 13474968

 13484737

 13470339

 13489365

 13465455

 13494250

 13460570

 13499134

 13455942

 13500415

 13451057

 13446429

 13441544

 13439744

Harmonies

Analogous

The Analogous color harmony consists of three colors that are next to each other on the color wheel.



13348791



13479852



13218212

Triad

The Triadic color harmony groups three colors that are evenly spaced from another and form a triangle on the color wheel.



13479852



10992554



11188171

Complementary

The Complementary color scheme is a pair of colors which are on the opposite of each other on the color wheel.



13479852



11324109

Split Complementary

Split-complementary colors differ from the complementary color scheme. The scheme consists of three colors, the original color and two neighbors of the complement color.



10468040



13479852



10402997

Square

The Square scheme is like the rectangle color scheme, but the four colors are evenly spaced on the color wheel.



13479852



11778211



10206399



12039113

Rectangle

The Rectangle color scheme consists of four colors that form a rectangle on the color wheel.



13479852



12825761



10206399



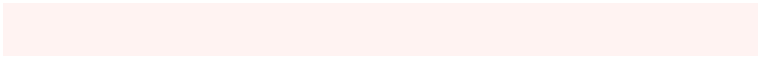
10926283

Sweetspot

The Sweet Spot groups the original color and five complimentary colors.



13479852



16774130



13479114



8419704



0



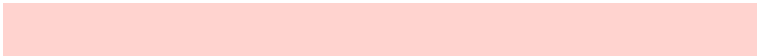
8421504

Same Dimension

The Same Dimension uses a secret algorithm to generate beautiful new colors.



13479852



16765903



13483948



6708572



10882816



2491136

Inverse Universe

The Inverse Universe completely reimagines the original color for something new.



11324109



13630463



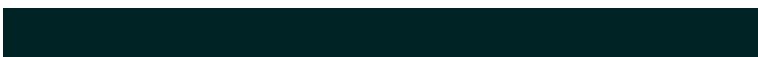
11320013



6055270



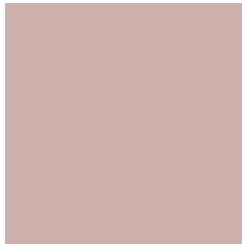
38822



8998

Previews

White Background



This preview shows how the Decimal color 13479852 looks on a white background.

Color Contrast Check

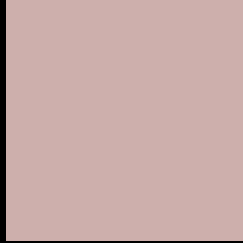
Large Text (above 18pt) WCAG AA × Fail

Any Text WCAG AA × Fail

Large Text (above 18pt) WCAG AAA × Fail

Any Text WCAG AAA × Fail

Black Background



This preview shows how the Decimal color 13479852 looks on a black background.

Color Contrast Check

Large Text (above 18pt) WCAG AA ✓ Pass

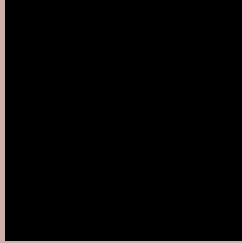
Any Text WCAG AA ✓ Pass

Large Text (above 18pt) WCAG AAA ✓ Pass

Any Text WCAG AAA ✓ Pass

If you want to check with other color combinations, try the [Color Contrast Checker](#).

Decimal 13479852 Background



This preview shows how black text looks on a background with the Decimal color 13479852.



This preview shows how white text looks on a background with the Decimal color 13479852.

Color Blindness Simulation

Color vision deficiency is a very complex topic, and I could not describe the different causes any better than Wikipedia does, so if you want to learn more, you should check out their [article about color blindness](#).


Dichromacy



Original Color
13479852

Protanopia
12301743

Deuteranopia
13349036



Tritanopia
13610426

Trichromacy



Original Color
13479852

Protanomaly
12759982

Deuteranomaly
13414572

Tritanomaly
13545141

Monochromacy



Original Color
13479852

Achromatopsia
12105912

Achromatomaly
12629428

CSS Examples

Text

The CSS property to change the color of the text to Decimal 13479852 is called "color". The color property can be set on classes, ids or directly on the HTML element.

This example shows how text in the color #CDAFAC looks like.

```
.text, #text, p{  
  color:#CDAFAC  
}
```

If you want to add a text shadow in that color use the text-shadow property, you can generate a text shadow directly with our [CSS Text Shadow Generator](#).

Here you see how black text with a 4 pixel #CDAFAC colored shadow looks like.

```
.shadow{ text-shadow: 4px 4px 2px #CDAFAC
}
```

Border

The CSS property to change the border of an element to Decimal 13479852 is called "border". The border property can be set on classes, ids or directly on the HTML element.

This example shows the color as border, it can be applied via the CSS property "border" or "border-color".

```
.border, #border, table{ border:4px solid
#CDAFAC }
```

If only the border color should be changed use the property `border-color`.

```
.border{ border-color:#CDAFAC }
```

If you want to add a box shadow in that color use:

Here you see how a box with a 4 pixel #CDAFAC colored shadow looks like.

```
.boxshadow{ -moz-box-shadow:4px 4px 4px  
4px #CDAFAC; -webkit-box-shadow:4px 4px  
4px 4px #CDAFAC; box-shadow:4px 4px 4px  
4px #CDAFAC }
```

Background

The CSS property to change the background color of an element to Decimal 13479852 is called "background". The background property can be set on classes, ids or directly on the HTML element.

```
.background, #background, body{  
background:#CDAFAC }
```

If only the background color should be changed can be used:

```
.background{ background-color:#CDAFAC }
```

This example shows the color as background, it is applied via the CSS property "background".

To optimize and compress your CSS code, you can use our [online CSS compressor and optimizer](#) based on csstidy. If you want to create a linear or radial gradient as background or border, check our [CSS Gradient Generator](#).

Hey! You found this booklet interesting? Support Converting Colors with the new Membership Option!

The pro membership hides all ads, plus gives you double the colors in the color bucket, and more awesome pro features!

[Learn more, Memberships starting at \\$2.50/m!](#)

**Follow me
on Twitter!**

@ConvertingColor