

Converting Colors

Decimal(13480344)

Have a look what the booklet for
Decimal(13480344) contains.

Decimal(13480344)	3
<i>Conversions</i>	4
<i>Details</i>	6
<i>Harmonies</i>	11
<i>Previews</i>	23
<i>Color Blindness Simulation</i>	26
<i>CSS Examples</i>	29

Color

Decimal(13480344)

Conversions

Conversions Part 1

Format	Color
Hex	CDB198
RGB	205, 177, 152
RGB Percent	80%, 69%, 60%
CMY	0.1961, 0.3059, 0.4039
CMYK	0.00, 0.14, 0.26, 0.20
HSL	28°, 35%, 70%
HSV	28°, 26%, 80%
XYZ	46.5665, 46.6904, 36.2636
YIQ	182.5220, 24.7130, -1.8390

Conversions

Conversions Part 2

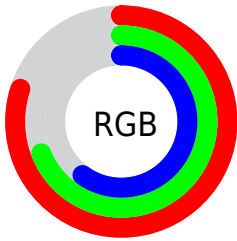
Format	Color
R_{YB}	205, 199, 152
Decimal	13480344
CIE Lab	73.99, 6.27, 16.52
CIE LCh	74, 17.676, 69.207
Yxy	46.6904, 0.3595, 0.3605
Android (android.graphics.Color)	4291670424 (0xFFCDB198)
YUV	182.5220, -15.0473, 19.7132
Hunter-Lab	68.3304, 2.0678, 16.3655

Details

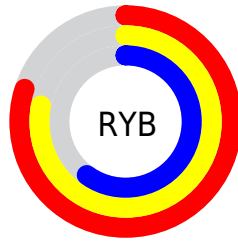
The Decimal color **13480344** is a light color, and the websafe version is hex **CC9999**. A complement of this color would be **10007757**, and the grayscale version is **12040119**.

A 20% lighter version of the original color is **16771534**, and **9862245** is the 20% darker color. If you saturate the color by 10%, you get **13477508**, and if you desaturate by 10%, it is **13483181**.

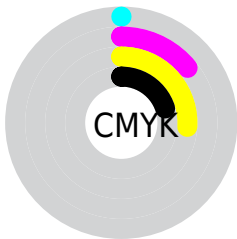
Distribution



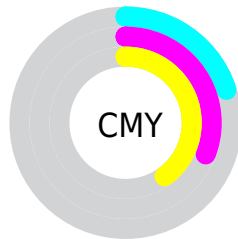
- Red (80%)
- Green (69%)
- Blue (60%)



- Red (80%)
- Yellow (78%)
- Blue (60%)



- Cyan (0%)
- Magenta (14%)
- Yellow (26%)
- Black (20%)



- Cyan (20%)
- Magenta (31%)
- Yellow (40%)

Brightness & Saturation Gradients

These gradients show how the Decimal color 13480344 changes by changing the brightness by 10 percent. The first figure shows a shift by +10% for each color and the second figure -10%.

Similar to the brightness gradients but the following saturation gradients show a change of the Decimal color 13480344 by changing the saturation by 10% instead.

 13480344

 13480344

16777215

 11638398


 16771534

 9862245

 16777195

 8152141

 6442038

 4863264

 3285002

 1837312

 0

 13480344

 13480344

 13477508

 13483181

 13474671

 13486017

 13472090

 13488598

 13469254

 13491434

 13466418

 13494271

 13463581

 13497087

 13460744

 13499903

 13459712

 13500415

Harmonies

Analogous

The Analogous color harmony consists of three colors that are next to each other on the color wheel.



14069154



13480344



12498582

Triad

The Triadic color harmony groups three colors that are evenly spaced from another and form a triangle on the color wheel.



13480344



9289658



12562639

Complementary

The Complementary color scheme is a pair of colors which are on the opposite of each other on the color wheel.



13480344



10007757

Split Complementary

Split-complementary colors differ from the complementary color scheme. The scheme consists of three colors, the original color and two neighbors of the complement color.



11187926



13480344



9223882

Square

The Square scheme is like the rectangle color scheme, but the four colors are evenly spaced on the color wheel.



13480344



10075818



9944020



13610178

Rectangle

The Rectangle color scheme consists of four colors that form a rectangle on the color wheel.



13480344



11647641



9944020



12104402

Sweetspot

The Sweet Spot groups the original color and five complimentary colors.



13480344



16774379



13473972



8419699



0



8421504

Same Dimension

The Same Dimension uses a secret algorithm to generate beautiful new colors.



13480344



16766384



13487000



6709596



10898944



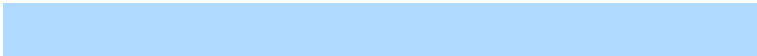
2494976

Inverse Universe

The Inverse Universe completely reimagines the original color for something new.



10007757



11590399



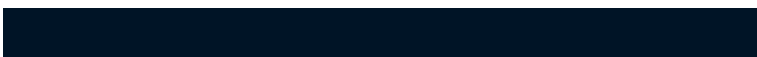
10001101



6054246



22694



5158

Previews

White Background



This preview shows how the Decimal color 13480344 looks on a white background.

Color Contrast Check

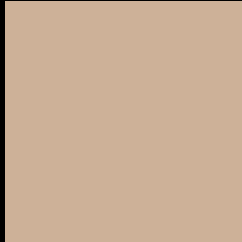
Large Text (above 18pt) WCAG AA × Fail

Any Text WCAG AA × Fail

Large Text (above 18pt) WCAG AAA × Fail

Any Text WCAG AAA × Fail

Black Background



This preview shows how the Decimal color 13480344 looks on a black background.

Color Contrast Check

Large Text (above 18pt) WCAG AA ✓ Pass

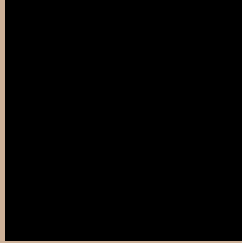
Any Text WCAG AA ✓ Pass

Large Text (above 18pt) WCAG AAA ✓ Pass

Any Text WCAG AAA ✓ Pass

If you want to check with other color combinations, try the [Color Contrast Checker](#).

Decimal 13480344 Background



This preview shows how black text looks on a background with the Decimal color 13480344.



This preview shows how white text looks on a background with the Decimal color 13480344.

Color Blindness Simulation

Color vision deficiency is a very complex topic, and I could not describe the different causes any better than Wikipedia does, so if you want to learn more, you should check out their [article about color blindness](#).

Dichromacy



Original Color
13480344

Protanopia
12629658

Deuteranopia
13807512



Tritanopia
13741242

Trichromacy



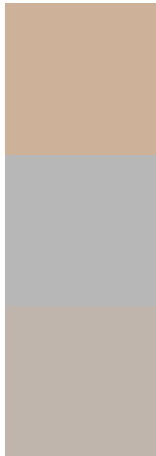
Original Color
13480344

Protanomaly
12956825

Deuteranomaly
13676696

Tritanomaly
13676206

Monochromacy



Original Color
13480344

Achromatopsia
12040119

Achromatomaly
12563884

CSS Examples

Text

The CSS property to change the color of the text to Decimal 13480344 is called "color". The color property can be set on classes, ids or directly on the HTML element.

This example shows how text in the color #CDB198 looks like.

```
.text, #text, p{  
    color:#CDB198  
}
```

If you want to add a text shadow in that color use the text-shadow property, you can generate a text shadow directly with our [CSS Text Shadow Generator](#).

Here you see how black text with a 4 pixel #CDB198 colored shadow looks like.

```
.shadow{ text-shadow: 4px 4px 2px #CDB198
}
```

Border

The CSS property to change the border of an element to Decimal 13480344 is called "border". The border property can be set on classes, ids or directly on the HTML element.

This example shows the color as border, it can be applied via the CSS property "border" or "border-color".

```
.border, #border, table{ border:4px solid
#CDB198 }
```

If only the border color should be changed use the property `border-color`.

```
.border{ border-color:#CDB198 }
```

If you want to add a box shadow in that color use:

Here you see how a box with a 4 pixel #CDB198 colored shadow looks like.

```
.boxshadow{ -moz-box-shadow:4px 4px 4px  
4px #CDB198; -webkit-box-shadow:4px 4px  
4px 4px #CDB198; box-shadow:4px 4px 4px  
4px #CDB198 }
```

Background

The CSS property to change the background color of an element to Decimal 13480344 is called "background". The background property can be set on classes, ids or directly on the HTML element.

```
.background, #background, body{  
background:#CDB198 }
```

If only the background color should be changed can be used:

```
.background{ background-color:#CDB198 }
```

This example shows the color as background, it is applied via the CSS property "background".

To optimize and compress your CSS code, you can use our [online CSS compressor and optimizer](#) based on csstidy. If you want to create a linear or radial gradient as background or border, check our [CSS Gradient Generator](#).

Hey! You found this booklet interesting? Support Converting Colors with the new Membership Option!

The pro membership hides all ads, plus gives you double the colors in the color bucket, and more awesome pro features!

[Learn more, Memberships starting at \\$2.50/m!](#)

**Follow me
on Twitter!**

@ConvertingColor