

Converting Colors

Decimal(13480350)

Have a look what the booklet for
Decimal(13480350) contains.

Decimal(13480350)	3
<i>Conversions</i>	4
<i>Details</i>	6
<i>Harmonies</i>	11
<i>Previews</i>	23
<i>Color Blindness Simulation</i>	26
<i>CSS Examples</i>	29

Color

Decimal(13480350)

Conversions

Conversions Part 1

Format	Color
Hex	CDB19E
RGB	205, 177, 158
RGB Percent	80%, 69%, 62%
CMY	0.1961, 0.3059, 0.3804
CMYK	0.00, 0.14, 0.23, 0.20
HSL	24°, 32%, 71%
HSV	24°, 23%, 80%
XYZ	47.0705, 46.8920, 38.9179
YIQ	183.2060, 22.7870, 0.0270

Conversions

Conversions Part 2

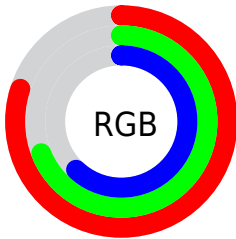
Format	Color
R_{YB}	205, 190, 158
Decimal	13480350
CIE _{Lab}	74.12, 7.13, 13.44
CIE _{LCh}	74, 15.220, 62.047
Yxy	46.8920, 0.3542, 0.3529
Android (android.graphics.Color)	4291670430 (0xFFCDB19E)
YUV	183.2060, -12.4266, 19.1133
Hunter-Lab	68.4778, 2.8620, 14.2382

Details

The Decimal color **13480350** is a light color, and the websafe version is hex **CC9999**. A complement of this color would be **10402509**, and the grayscale version is **12040119**.

A 20% lighter version of the original color is **16771541**, and **9862251** is the 20% darker color. If you saturate the color by 10%, you get **13477258**, and if you desaturate by 10%, it is **13483443**.

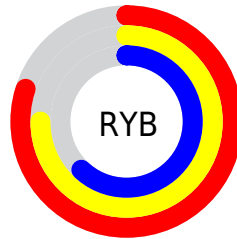
Distribution



Red (80%)

Green (69%)

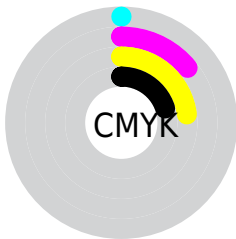
Blue (62%)



Red (80%)

Yellow (75%)

Blue (62%)

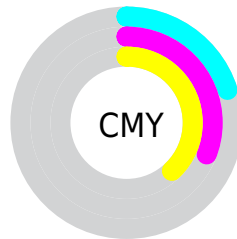


Cyan (0%)

Magenta (14%)

Yellow (23%)

Black (20%)



Cyan (20%)

Magenta (31%)

Yellow (38%)

Brightness & Saturation Gradients

These gradients show how the Decimal color 13480350 changes by changing the brightness by 10 percent. The first figure shows a shift by +10% for each color and the second figure -10%.

Similar to the brightness gradients but the following saturation gradients show a change of the Decimal color 13480350 by changing the saturation by 10% instead.

 13480350

 13480350

16777215

 11638404

 16771541

 9862251

 16777201

 8152146

 6507579

 4863269

 3350545

 1968384

 0

 13480350

 13480350

 13477258

 13483443

 13474165

 13486535

 13470817

 13489884

 13467724

 13492976

 13464631

 13496063

 13461539

 13499135

 13458446

 13500415

 13456128

Harmonies

Analogous

The Analogous color harmony consists of three colors that are next to each other on the color wheel.



13938344



13480350



12695194

Triad

The Triadic color harmony groups three colors that are evenly spaced from another and form a triangle on the color wheel.



13480350



9879223



12235470

Complementary

The Complementary color scheme is a pair of colors which are on the opposite of each other on the color wheel.



13480350



10402509

Split Complementary

Split-complementary colors differ from the complementary color scheme. The scheme consists of three colors, the original color and two neighbors of the complement color.



11057106



13480350



9617092

Square

The Square scheme is like the rectangle color scheme, but the four colors are evenly spaced on the color wheel.



13480350



10599849



10075086



13283012

Rectangle

The Rectangle color scheme consists of four colors that form a rectangle on the color wheel.



13480350



11975068



10075086



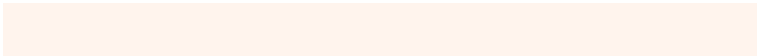
11842768

Sweetspot

The Sweet Spot groups the original color and five complimentary colors.



13480350



16774381



13475514



8419701



0



8421504

Same Dimension

The Same Dimension uses a secret algorithm to generate beautiful new colors.



13480350



16766136



13486238



6709340



10896128



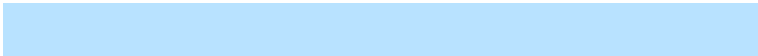
2494208

Inverse Universe

The Inverse Universe completely reimagines the original color for something new.



10402509



12116735



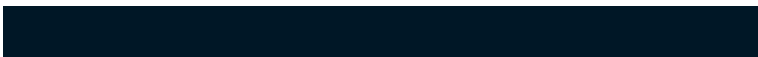
10396621



6054502



25510



5926

Previews

White Background



This preview shows how the Decimal color 13480350 looks on a white background.

Color Contrast Check

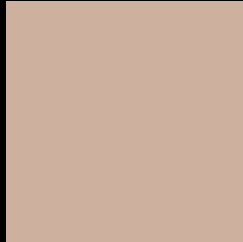
Large Text (above 18pt) WCAG AA × Fail

Any Text WCAG AA × Fail

Large Text (above 18pt) WCAG AAA × Fail

Any Text WCAG AAA × Fail

Black Background



This preview shows how the Decimal color 13480350 looks on a black background.

Color Contrast Check

Large Text (above 18pt) WCAG AA ✓ Pass

Any Text WCAG AA ✓ Pass

Large Text (above 18pt) WCAG AAA ✓ Pass

Any Text WCAG AAA ✓ Pass

If you want to check with other color combinations, try the [Color Contrast Checker](#).

Decimal 13480350 Background



This preview shows how black text looks on a background with the Decimal color 13480350.




This preview shows how white text looks on a background with the Decimal color 13480350.

Color Blindness Simulation

Color vision deficiency is a very complex topic, and I could not describe the different causes any better than Wikipedia does, so if you want to learn more, you should check out their [article about color blindness](#).

Dichromacy





Tritanopia
13675962

Trichromacy



Original Color
13480350

Protanomaly
12891295

Deuteranomaly
13676702

Tritanomaly
13610672

Monochromacy



Original Color
13480350

Achromatopsia
12040119

Achromatomaly
12563886

CSS Examples

Text

The CSS property to change the color of the text to Decimal 13480350 is called "color". The color property can be set on classes, ids or directly on the HTML element.

This example shows how text in the color #CDB19E looks like.

```
.text, #text, p{  
    color:#CDB19E  
}
```

If you want to add a text shadow in that color use the text-shadow property, you can generate a text shadow directly with our [CSS Text Shadow Generator](#).

Here you see how black text with a 4 pixel #CDB19E colored shadow looks like.

```
.shadow{ text-shadow: 4px 4px 2px #CDB19E
}
```

Border

The CSS property to change the border of an element to Decimal 13480350 is called "border". The border property can be set on classes, ids or directly on the HTML element.

This example shows the color as border, it can be applied via the CSS property "border" or "border-color".

```
.border, #border, table{ border:4px solid
#CDB19E }
```

If only the border color should be changed use the property `border-color`.

```
.border{ border-color:#CDB19E }
```

If you want to add a box shadow in that color use:

Here you see how a box with a 4 pixel #CDB19E colored shadow looks like.

```
.boxshadow{ -moz-box-shadow:4px 4px 4px  
4px #CDB19E; -webkit-box-shadow:4px 4px  
4px 4px #CDB19E; box-shadow:4px 4px 4px  
4px #CDB19E }
```

Background

The CSS property to change the background color of an element to Decimal 13480350 is called "background". The background property can be set on classes, ids or directly on the HTML element.

```
.background, #background, body{  
background:#CDB19E }
```

If only the background color should be changed can be used:

```
.background{ background-color:#CDB19E }
```

This example shows the color as background, it is applied via the CSS property "background".

To optimize and compress your CSS code, you can use our [online CSS compressor and optimizer](#) based on csstidy. If you want to create a linear or radial gradient as background or border, check our [CSS Gradient Generator](#).

Hey! You found this booklet interesting? Support Converting Colors with the new Membership Option!

The pro membership hides all ads, plus gives you double the colors in the color bucket, and more awesome pro features!

[Learn more, Memberships starting at \\$2.50/m!](#)

**Follow me
on Twitter!**

@ConvertingColor