

# Converting Colors

Decimal(13480371)

Have a look what the booklet for  
Decimal(13480371) contains.

<b>Decimal(13480371)</b> .....	3
<i><b>Conversions</b></i> .....	4
<i><b>Details</b></i> .....	6
<i><b>Harmonies</b></i> .....	11
<i><b>Previews</b></i> .....	23
<i><b>Color Blindness Simulation</b></i> .....	26
<i><b>CSS Examples</b></i> .....	29

# **Color**

**Decimal(13480371)**

# Conversions

## Conversions Part 1

Format	Color
Hex	CDB1B3
RGB	205, 177, 179
RGB Percent	80%, 69%, 70%
CMY	0.1961, 0.3059, 0.2980
CMYK	0.00, 0.14, 0.13, 0.20
HSL	356°, 22%, 75%
HSV	356°, 14%, 80%
XYZ	49.0357, 47.6781, 49.2662
YIQ	185.6000, 16.0460, 6.5580

# Conversions

## Conversions Part 2

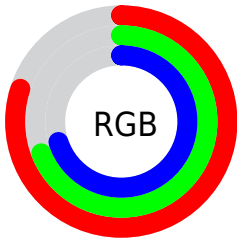
Format	Color
R <sub>YB</sub>	205, 177, 179
Decimal	13480371
CIE Lab	74.62, 10.41, 2.70
CIE LCh	75, 10.751, 14.557
Yxy	47.6781, 0.3359, 0.3266
Android (android.graphics.Color)	4291670451 (0xFFCDB1B3)
YUV	185.6000, -3.2538, 17.0138
Hunter-Lab	69.0493, 5.9262, 6.0316

# Details

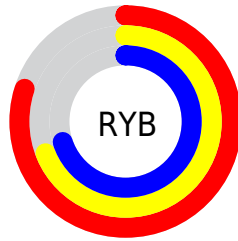
The Decimal color **13480371** is a light color, and the websafe version is hex **CC9999**. A complement of this color would be **11652555**, and the grayscale version is **12237498**.

A 20% lighter version of the original color is **16771563**, and **9927806** is the 20% darker color. If you saturate the color by 10%, you get **13475232**, and if you desaturate by 10%, it is **13485766**.

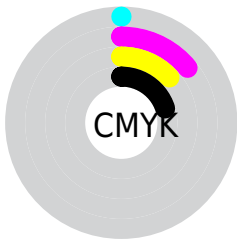
# Distribution



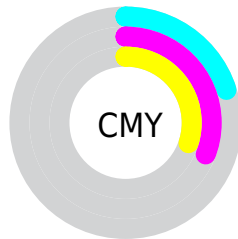
- Red (80%)
- Green (69%)
- Blue (70%)



- Red (80%)
- Yellow (69%)
- Blue (70%)



- Cyan (0%)
- Magenta (14%)
- Yellow (13%)
- Black (20%)



- Cyan (20%)
- Magenta (31%)
- Yellow (30%)

# Brightness & Saturation Gradients

These gradients show how the Decimal color 13480371 changes by changing the brightness by 10 percent. The first figure shows a shift by +10% for each color and the second figure -10%.

Similar to the brightness gradients but the following saturation gradients show a change of the Decimal color 13480371 by changing the saturation by 10% instead.



 13480371

 13480371

16777215

 11638424

 16771563

 9927806

 8151909

 6507341

 4928823

 3415841

 2099211

 0

 13480371

 13480371

 13475232

 13485766

 13469837

 13490905

 13464698

 13496300

 13459303

 13500415

 13454164

 13448769

 13443374

 13438235

 13434895

# Harmonies

## Analogous

The Analogous color harmony consists of three colors that are next to each other on the color wheel.



13218237



13480371



13415082

# Triad

The Triadic color harmony groups three colors that are evenly spaced from another and form a triangle on the color wheel.



13480371



11516841



11057866

# Complementary

The Complementary color scheme is a pair of colors which are on the opposite of each other on the color wheel.



13480371



11652555

# Split Complementary

Split-complementary colors differ from the complementary color scheme. The scheme consists of three colors, the original color and two neighbors of the complement color.



10534085



13480371



10862002

# Square

The Square scheme is like the rectangle color scheme, but the four colors are evenly spaced on the color wheel.



13480371



12302500



10469052



11777995

# Rectangle

The Rectangle color scheme consists of four colors that form a rectangle on the color wheel.



13480371



13153446



10469052



10861513

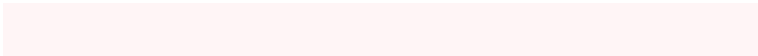


# Sweetspot

The Sweet Spot groups the original color and five complimentary colors.



13480371



16774646



13349325



8419706



0



8421504



# Same Dimension

The Same Dimension uses a secret algorithm to generate beautiful new colors.



13480371



16766681



13483441



6708317



10878988



2490371



# Inverse Universe

The Inverse Universe completely reimagines the original color for something new.



13480371



16766681



11649485



6708317



10878988

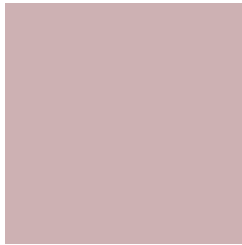


2490371



# Previews

## White Background



This preview shows how the Decimal color 13480371 looks on a white background.

## Color Contrast Check

Large Text (above 18pt) WCAG AA × Fail

Any Text WCAG AA × Fail

Large Text (above 18pt) WCAG AAA × Fail

Any Text WCAG AAA × Fail

# Black Background



This preview shows how the Decimal color 13480371 looks on a black background.

## Color Contrast Check

Large Text (above 18pt) WCAG AA ✓ Pass

Any Text WCAG AA ✓ Pass

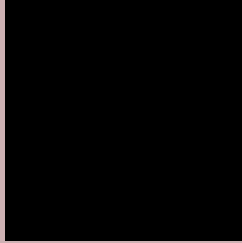
Large Text (above 18pt) WCAG AAA ✓ Pass

Any Text WCAG AAA ✓ Pass

If you want to check with other color combinations, try the [Color Contrast Checker](#).



## Decimal 13480371 Background



This preview shows how black text looks on a background with the Decimal color 13480371.



This preview shows how white text looks on a background with the Decimal color 13480371.

# Color Blindness Simulation

Color vision deficiency is a very complex topic, and I could not describe the different causes any better than Wikipedia does, so if you want to learn more, you should check out their [article about color blindness](#).


## Dichromacy



**Original Color**  
13480371

**Protanopia**  
12302262

**Deuteranopia**  
13349555



**Tritanopia**  
13545405

# Trichromacy



**Original Color**  
13480371

**Protanomaly**  
12760501

**Deuteranomaly**  
13415091

**Tritanomaly**  
13545657

# Monochromacy



**Original Color**  
13480371

**Achromatopsia**  
12237498

**Achromatomaly**  
12695479

# CSS Examples

## Text

The CSS property to change the color of the text to Decimal 13480371 is called "color". The color property can be set on classes, ids or directly on the HTML element.

This example shows how text in the color #CDB1B3 looks like.

```
.text, #text, p{  
  color:#CDB1B3  
}
```

If you want to add a text shadow in that color use the text-shadow property, you can generate a text shadow directly with our [CSS Text Shadow Generator](#).

Here you see how black text with a 4 pixel #CDB1B3 colored shadow looks like.

```
.shadow{ text-shadow: 4px 4px 2px #CDB1B3
}
```

## Border

The CSS property to change the border of an element to Decimal 13480371 is called "border". The border property can be set on classes, ids or directly on the HTML element.

This example shows the color as border, it can be applied via the CSS property "border" or "border-color".

```
.border, #border, table{ border:4px solid
#CDB1B3 }
```

If only the border color should be changed use the property `border-color`.

```
.border{ border-color:#CDB1B3 }
```

If you want to add a box shadow in that color use:

Here you see how a box with a 4 pixel #CDB1B3 colored shadow looks like.

```
.boxshadow{ -moz-box-shadow:4px 4px 4px  
4px #CDB1B3; -webkit-box-shadow:4px 4px  
4px 4px #CDB1B3; box-shadow:4px 4px 4px  
4px #CDB1B3 }
```

# Background

The CSS property to change the background color of an element to Decimal 13480371 is called "background". The background property can be set on classes, ids or directly on the HTML element.

```
.background, #background, body{  
background:#CDB1B3 }
```

If only the background color should be changed can be used:

```
.background{ background-color:#CDB1B3 }
```

This example shows the color as background, it is applied via the CSS property "background".

To optimize and compress your CSS code, you can use our [online CSS compressor and optimizer](#) based on csstidy. If you want to create a linear or radial gradient as background or border, check our [CSS Gradient Generator](#).



Hey! You found this booklet interesting? Support Converting Colors with the new Membership Option!

The pro membership hides all ads, plus gives you double the colors in the color bucket, and more awesome pro features!

**[Learn more, Memberships starting at \\$2.50/m!](#)**

**Follow me  
on Twitter!**

@ConvertingColor