

Converting Colors

Decimal(13480861)

Have a look what the booklet for
Decimal(13480861) contains.

Decimal(13480861)	3
<i>Conversions</i>	4
<i>Details</i>	6
<i>Harmonies</i>	11
<i>Previews</i>	23
<i>Color Blindness Simulation</i>	26
<i>CSS Examples</i>	29

Color

Decimal(13480861)

Conversions

Conversions Part 1

Format	Color
Hex	CDB39D
RGB	205, 179, 157
RGB Percent	80%, 70%, 62%
CMY	0.1961, 0.2980, 0.3843
CMYK	0.00, 0.13, 0.23, 0.20
HSL	27°, 32%, 71%
HSV	27°, 23%, 80%
XYZ	47.3827, 47.6537, 38.5990
YIQ	184.2660, 22.5580, -1.3300

Conversions

Conversions Part 2

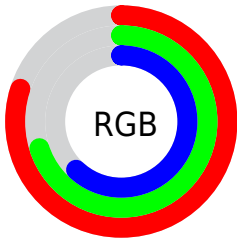
Format	Color
R_{YB}	205, 198, 157
Decimal	13480861
CIE Lab	74.61, 5.92, 14.67
CIE LCh	75, 15.817, 68.040
Yxy	47.6537, 0.3546, 0.3566
Android (android.graphics.Color)	4291670941 (0xFFCDB39D)
YUV	184.2660, -13.4421, 18.1837
Hunter-Lab	69.0316, 1.7156, 15.1701

Details

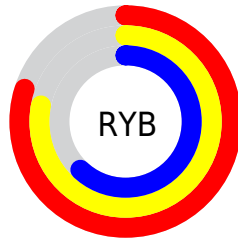
The Decimal color **13480861** is a light color, and the websafe version is hex **CC9999**. A complement of this color would be **10336205**, and the grayscale version is **12105912**.

A 20% lighter version of the original color is **16772052**, and **9862762** is the 20% darker color. If you saturate the color by 10%, you get **13478025**, and if you desaturate by 10%, it is **13483698**.

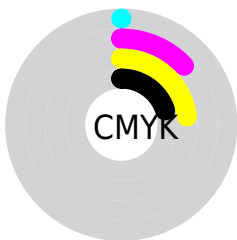
Distribution



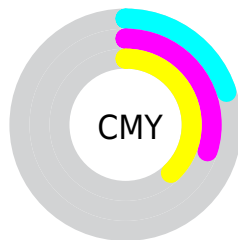
- Red (80%)
- Green (70%)
- Blue (62%)



- Red (80%)
- Yellow (78%)
- Blue (62%)



- Cyan (0%)
- Magenta (13%)
- Yellow (23%)
- Black (20%)



- Cyan (20%)
- Magenta (30%)
- Yellow (38%)

Brightness & Saturation Gradients

These gradients show how the Decimal color 13480861 changes by changing the brightness by 10 percent. The first figure shows a shift by +10% for each color and the second figure -10%.

Similar to the brightness gradients but the following saturation gradients show a change of the Decimal color 13480861 by changing the saturation by 10% instead.

 13480861

 13480861

16777215

 11638915

 16772052

 9862762

 16777200

 8152401

 6507834

 4863781

 3350800

 1903360

 0

 13480861

 13480861

 13478025

 13483698

 13475188

 13486534

 13472352

 13489371

 13469515

 13492207

 13466423

 13495295

 13463586

 13498111

 13460750

 13500415

 13458944

Harmonies

Analogous

The Analogous color harmony consists of three colors that are next to each other on the color wheel.



14004134



13480861



12564635

Triad

The Triadic color harmony groups three colors that are evenly spaced from another and form a triangle on the color wheel.



13480861



9748667



12563406

Complementary

The Complementary color scheme is a pair of colors which are on the opposite of each other on the color wheel.



13480861



10336205

Split Complementary

Split-complementary colors differ from the complementary color scheme. The scheme consists of three colors, the original color and two neighbors of the complement color.



11384788



13480861



9617353

Square

The Square scheme is like the rectangle color scheme, but the four colors are evenly spaced on the color wheel.



13480861



10469292



10271954



13545411

Rectangle

The Rectangle color scheme consists of four colors that form a rectangle on the color wheel.



13480861



11844510



10271954



12170449

Sweetspot

The Sweet Spot groups the original color and five complimentary colors.



13480861



16774637



13475255



8419957



0



8421504

Same Dimension

The Same Dimension uses a secret algorithm to generate beautiful new colors.



13480861



16767160



13487005



6709340



10898432



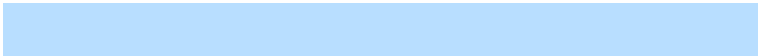
2494976

Inverse Universe

The Inverse Universe completely reimagines the original color for something new.



10336205



12115711



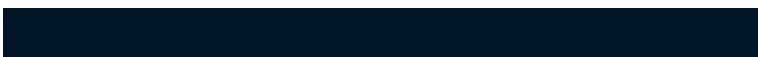
10330061



6054246



23206



5414

Previews

White Background



This preview shows how the Decimal color 13480861 looks on a white background.

Color Contrast Check

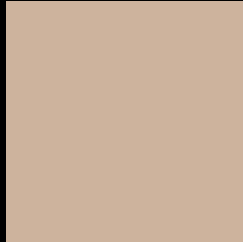
Large Text (above 18pt) WCAG AA × Fail

Any Text WCAG AA × Fail

Large Text (above 18pt) WCAG AAA × Fail

Any Text WCAG AAA × Fail

Black Background



This preview shows how the Decimal color 13480861 looks on a black background.

Color Contrast Check

Large Text (above 18pt) WCAG AA ✓ Pass

Any Text WCAG AA ✓ Pass

Large Text (above 18pt) WCAG AAA ✓ Pass

Any Text WCAG AAA ✓ Pass

If you want to check with other color combinations, try the [Color Contrast Checker](#).

Decimal 13480861 Background



This preview shows how black text looks on a background with the Decimal color 13480861.



This preview shows how white text looks on a background with the Decimal color 13480861.

Color Blindness Simulation

Color vision deficiency is a very complex topic, and I could not describe the different causes any better than Wikipedia does, so if you want to learn more, you should check out their [article about color blindness](#).


Dichromacy



Original Color
13480861

Protanopia
12695455

Deuteranopia
13873565



Tritanopia
13742012

Trichromacy



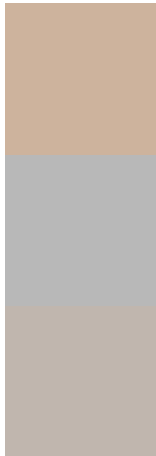
Original Color
13480861

Protanomaly
12957342

Deuteranomaly
13742749

Tritanomaly
13676721

Monochromacy



Original Color
13480861

Achromatopsia
12105912

Achromatomaly
12629678

CSS Examples

Text

The CSS property to change the color of the text to Decimal 13480861 is called "color". The color property can be set on classes, ids or directly on the HTML element.

This example shows how text in the color #CDB39D looks like.

```
.text, #text, p{  
    color:#CDB39D  
}
```

If you want to add a text shadow in that color use the text-shadow property, you can generate a text shadow directly with our [CSS Text Shadow Generator](#).

Here you see how black text with a 4 pixel #CDB39D colored shadow looks like.

```
.shadow{ text-shadow: 4px 4px 2px #CDB39D
}
```

Border

The CSS property to change the border of an element to Decimal 13480861 is called "border". The border property can be set on classes, ids or directly on the HTML element.

This example shows the color as border, it can be applied via the CSS property "border" or "border-color".

```
.border, #border, table{ border:4px solid
#CDB39D }
```

If only the border color should be changed use the property `border-color`.

```
.border{ border-color:#CDB39D }
```

If you want to add a box shadow in that color use:

Here you see how a box with a 4 pixel #CDB39D colored shadow looks like.

```
.boxshadow{ -moz-box-shadow:4px 4px 4px  
4px #CDB39D; -webkit-box-shadow:4px 4px  
4px 4px #CDB39D; box-shadow:4px 4px 4px  
4px #CDB39D }
```

Background

The CSS property to change the background color of an element to Decimal 13480861 is called "background". The background property can be set on classes, ids or directly on the HTML element.

```
.background, #background, body{  
background:#CDB39D }
```

If only the background color should be changed can be used:

```
.background{ background-color:#CDB39D }
```

This example shows the color as background, it is applied via the CSS property "background".

To optimize and compress your CSS code, you can use our [online CSS compressor and optimizer](#) based on csstidy. If you want to create a linear or radial gradient as background or border, check our [CSS Gradient Generator](#).

Hey! You found this booklet interesting? Support Converting Colors with the new Membership Option!

The pro membership hides all ads, plus gives you double the colors in the color bucket, and more awesome pro features!

[Learn more, Memberships starting at \\$2.50/m!](#)

**Follow me
on Twitter!**

@ConvertingColor