

Converting Colors

Decimal(13481901)

Have a look what the booklet for
Decimal(13481901) contains.

Decimal(13481901)	3
<i>Conversions</i>	4
<i>Details</i>	6
<i>Harmonies</i>	11
<i>Previews</i>	23
<i>Color Blindness Simulation</i>	26
<i>CSS Examples</i>	29

Color

Decimal(13481901)

Conversions

Conversions Part 1

Format	Color
Hex	CDB7AD
RGB	205, 183, 173
RGB Percent	80%, 72%, 68%
CMY	0.1961, 0.2824, 0.3216
CMYK	0.00, 0.11, 0.16, 0.20
HSL	19°, 24%, 74%
HSV	19°, 16%, 80%
XYZ	49.6531, 49.8632, 46.5427
YIQ	188.4380, 16.3220, 1.5540

Conversions

Conversions Part 2

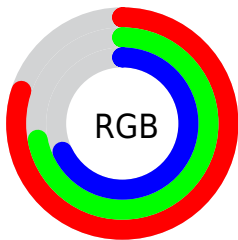
Format	Color
RYB	205, 188, 173
Decimal	13481901
CIELab	75.99, 6.20, 7.94
CIELCh	76, 10.074, 51.987
Yxy	49.8632, 0.3400, 0.3414
Android (android.graphics.Color)	4291671981 (0xFFCDB7AD)
YUV	188.4380, -7.6109, 14.5249
Hunter-Lab	70.6139, 1.9404, 10.3508

Details

The Decimal color **13481901** is a light color, and the websafe version is hex **CCCCCC**. A complement of this color would be **11387853**, and the grayscale version is **12434877**.

A 20% lighter version of the original color is **16773092**, and **9929337** is the 20% darker color. If you saturate the color by 10%, you get **13478297**, and if you desaturate by 10%, it is **13485506**.

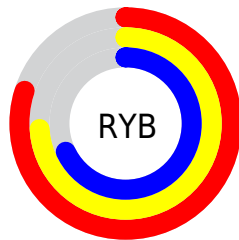
Distribution



Red (80%)

Green (72%)

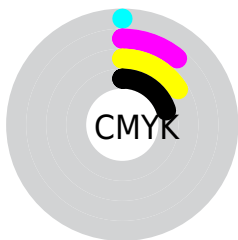
Blue (68%)



Red (80%)

Yellow (74%)

Blue (68%)

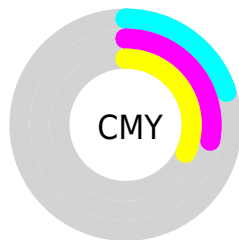


Cyan (0%)

Magenta (11%)

Yellow (16%)

Black (20%)



Cyan (20%)

Magenta (28%)

Yellow (32%)

Brightness & Saturation Gradients

These gradients show how the Decimal color 13481901 changes by changing the brightness by 10 percent. The first figure shows a shift by +10% for each color and the second figure -10%.

Similar to the brightness gradients but the following saturation gradients show a change of the Decimal color 13481901 by changing the saturation by 10% instead.

 13481901

 13481901

16777215

 11639954

 16773092

 9929337

 8153440

 6508872

 4930098

 3417117

 2100995

 0

 13481901

 13481901

13478297

13485506

13474692

13489110

13471088

13492715

13467483

13496319

13463878

13499903

13460018

13500415

13456414

13452809

13451264

Harmonies

Analogous

The Analogous color harmony consists of three colors that are next to each other on the color wheel.



13678005



13481901



13023913

Triad

The Triadic color harmony groups three colors that are evenly spaced from another and form a triangle on the color wheel.



13481901



11059640



12237516

Complementary

The Complementary color scheme is a pair of colors which are on the opposite of each other on the color wheel.



13481901



11387853

Split Complementary

Split-complementary colors differ from the complementary color scheme. The scheme consists of three colors, the original color and two neighbors of the complement color.



11517389



13481901



10797506

Square

The Square scheme is like the rectangle color scheme, but the four colors are evenly spaced on the color wheel.



13481901



11648944



10993610



12957639

Rectangle

The Rectangle color scheme consists of four colors that form a rectangle on the color wheel.



13481901



12565673



10993610



11975629

Sweetspot

The Sweet Spot groups the original color and five complimentary colors.



13481901



16774898



13479363



8419960



0



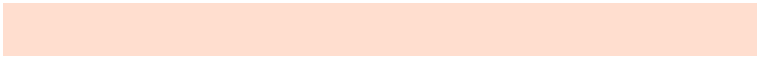
8421504

Same Dimension

The Same Dimension uses a secret algorithm to generate beautiful new colors.



13481901



16768719



13485997



6709084



10892288



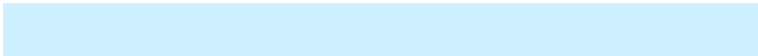
2493440

Inverse Universe

The Inverse Universe completely reimagines the original color for something new.



11387853



13627647



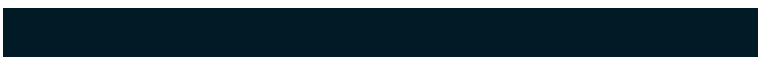
11383757



6054758



29350



6694

Previews

White Background



This preview shows how the Decimal color 13481901 looks on a white background.

Color Contrast Check

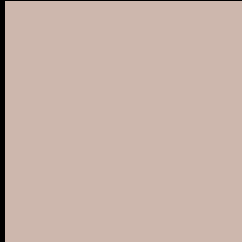
Large Text (above 18pt) WCAG AA × Fail

Any Text WCAG AA × Fail

Large Text (above 18pt) WCAG AAA × Fail

Any Text WCAG AAA × Fail

Black Background



This preview shows how the Decimal color 13481901 looks on a black background.

Color Contrast Check

Large Text (above 18pt) WCAG AA ✓ Pass

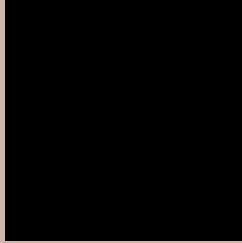
Any Text WCAG AA ✓ Pass

Large Text (above 18pt) WCAG AAA ✓ Pass

Any Text WCAG AAA ✓ Pass

If you want to check with other color combinations, try the [Color Contrast Checker](#).

Decimal 13481901 Background



This preview shows how black text looks on a background with the Decimal color 13481901.



This preview shows how white text looks on a background with the Decimal color 13481901.

Color Blindness Simulation

Color vision deficiency is a very complex topic, and I could not describe the different causes any better than Wikipedia does, so if you want to learn more, you should check out their [article about color blindness](#).


Dichromacy



Original Color
13481901

Protanopia
12762031

Deuteranopia
13874605



Tritanopia
13677762

Trichromacy



Original Color
13481901

Protanomaly
13023918

Deuteranomaly
13743789

Tritanomaly
13612474

Monochromacy



Original Color
13481901

Achromatopsia
12369084

Achromatomaly
12761783

CSS Examples

Text

The CSS property to change the color of the text to Decimal 13481901 is called "color". The color property can be set on classes, ids or directly on the HTML element.

This example shows how text in the color #CDB7AD looks like.

```
.text, #text, p{  
    color:#CDB7AD  
}
```

If you want to add a text shadow in that color use the text-shadow property, you can generate a text shadow directly with our [CSS Text Shadow Generator](#).

Here you see how black text with a 4 pixel #CDB7AD colored shadow looks like.

```
.shadow{ text-shadow: 4px 4px 2px #CDB7AD }  
}
```

Border

The CSS property to change the border of an element to Decimal 13481901 is called "border". The border property can be set on classes, ids or directly on the HTML element.

This example shows the color as border, it can be applied via the CSS property "border" or "border-color".

```
.border, #border, table{ border:4px solid #CDB7AD }  
}
```

If only the border color should be changed use the property `border-color`.

```
.border{ border-color:#CDB7AD }
```

If you want to add a box shadow in that color use:

Here you see how a box with a 4 pixel #CDB7AD colored shadow looks like.

```
.boxshadow{ -moz-box-shadow:4px 4px 4px  
4px #CDB7AD; -webkit-box-shadow:4px 4px  
4px 4px #CDB7AD; box-shadow:4px 4px 4px  
4px #CDB7AD }
```

Background

The CSS property to change the background color of an element to Decimal 13481901 is called "background". The background property can be set on classes, ids or directly on the HTML element.

```
.background, #background, body{  
background:#CDB7AD }
```

If only the background color should be changed can be used:

```
.background{ background-color:#CDB7AD }
```

This example shows the color as background, it is applied via the CSS property "background".

To optimize and compress your CSS code, you can use our [online CSS compressor and optimizer](#) based on csstidy. If you want to create a linear or radial gradient as background or border, check our [CSS Gradient Generator](#).

Hey! You found this booklet interesting? Support Converting Colors with the new Membership Option!

The pro membership hides all ads, plus gives you double the colors in the color bucket, and more awesome pro features!

[Learn more, Memberships starting at \\$2.50/m!](#)

**Follow me
on Twitter!**

@ConvertingColor