

Converting Colors

Decimal(13481913)

Have a look what the booklet for
Decimal(13481913) contains.

Decimal(13481913)	3
<i>Conversions</i>	4
<i>Details</i>	6
<i>Harmonies</i>	11
<i>Previews</i>	23
<i>Color Blindness Simulation</i>	26
<i>CSS Examples</i>	29

Color

Decimal(13481913)

Conversions

Conversions Part 1

Format	Color
Hex	CDB7B9
RGB	205, 183, 185
RGB Percent	80%, 72%, 73%
CMY	0.1961, 0.2824, 0.2745
CMYK	0.00, 0.11, 0.10, 0.20
HSL	355°, 18%, 76%
HSV	355°, 11%, 80%
XYZ	50.8673, 50.3489, 52.9363
YIQ	189.8060, 12.4700, 5.2860

Conversions

Conversions Part 2

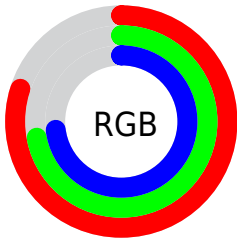
Format	Color
R _Y B	205, 183, 185
Decimal	13481913
CIE Lab	76.28, 8.18, 1.85
CIE LCh	76, 8.382, 12.716
Yxy	50.3489, 0.3300, 0.3266
Android (android.graphics.Color)	4291671993 (0xFFCDB7B9)
YUV	189.8060, -2.3694, 13.3251
Hunter-Lab	70.9570, 3.7876, 5.4375

Details

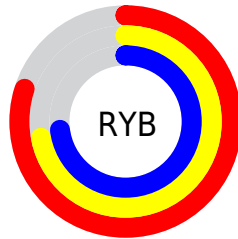
The Decimal color **13481913** is a light color, and the websafe version is hex **CCCCCC**. A complement of this color would be **12045771**, and the grayscale version is **12500670**.

A 20% lighter version of the original color is **16773105**, and **9929348** is the 20% darker color. If you saturate the color by 10%, you get **13476774**, and if you desaturate by 10%, it is **13487308**.

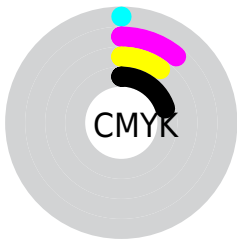
Distribution



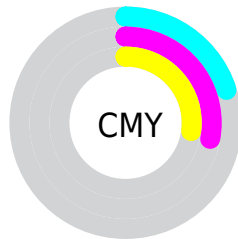
- Red (80%)
- Green (72%)
- Blue (73%)



- Red (80%)
- Yellow (72%)
- Blue (73%)



- Cyan (0%)
- Magenta (11%)
- Yellow (10%)
- Black (20%)



- Cyan (20%)
- Magenta (28%)
- Yellow (27%)

Brightness & Saturation Gradients

These gradients show how the Decimal color 13481913 changes by changing the brightness by 10 percent. The first figure shows a shift by +10% for each color and the second figure -10%.

Similar to the brightness gradients but the following saturation gradients show a change of the Decimal color 13481913 by changing the saturation by 10% instead.

 13481913

 13481913

16777215

 11639966

 16773105

 9929348

 8218987

 6574419

 4995644

 3482662

 2101009

 0

 13481913

 13481913

 13476774

 13487308

 13471380

 13492446

 13466241

 13497841

 13460846

 13500415

 13455708

 13450313

 13444919

 13439780

 13434899

Harmonies

Analogous

The Analogous color harmony consists of three colors that are next to each other on the color wheel.



13219777



13481913



13416626

Triad

The Triadic color harmony groups three colors that are evenly spaced from another and form a triangle on the color wheel.



13481913



11976625



11517643

Complementary

The Complementary color scheme is a pair of colors which are on the opposite of each other on the color wheel.



13481913



12045771

Split Complementary

Split-complementary colors differ from the complementary color scheme. The scheme consists of three colors, the original color and two neighbors of the complement color.



11190470



13481913



11452599

Square

The Square scheme is like the rectangle color scheme, but the four colors are evenly spaced on the color wheel.



13481913



12565933



11190719



12106955

Rectangle

The Rectangle color scheme consists of four colors that form a rectangle on the color wheel.



13481913



13220271



11190719



11386826

Sweetspot

The Sweet Spot groups the original color and five complimentary colors.



13481913



16775160



13350861



8419963



0



8421504

Same Dimension

The Same Dimension uses a secret algorithm to generate beautiful new colors.



13481913



16768737



13484215



6708317



10878991



2490371

Inverse Universe

The Inverse Universe completely reimagines the original color for something new.



13481913



16768737



12043469



6708317



10878991



2490371

Previews

White Background



This preview shows how the Decimal color 13481913 looks on a white background.

Color Contrast Check

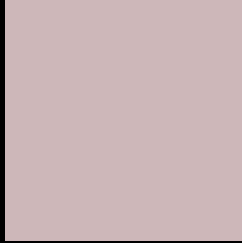
Large Text (above 18pt) WCAG AA × Fail

Any Text WCAG AA × Fail

Large Text (above 18pt) WCAG AAA × Fail

Any Text WCAG AAA × Fail

Black Background



This preview shows how the Decimal color 13481913 looks on a black background.

Color Contrast Check

Large Text (above 18pt) WCAG AA ✓ Pass

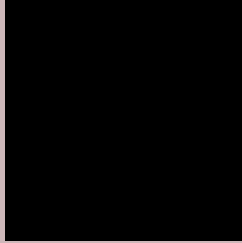
Any Text WCAG AA ✓ Pass

Large Text (above 18pt) WCAG AAA ✓ Pass

Any Text WCAG AAA ✓ Pass

If you want to check with other color combinations, try the [Color Contrast Checker](#).

Decimal 13481913 Background



This preview shows how black text looks on a background with the Decimal color 13481913.



This preview shows how white text looks on a background with the Decimal color 13481913.

Color Blindness Simulation

Color vision deficiency is a very complex topic, and I could not describe the different causes any better than Wikipedia does, so if you want to learn more, you should check out their [article about color blindness](#).


Dichromacy



Original Color
13481913

Protanopia
12630971

Deuteranopia
13612729



Tritanopia
13546948

Trichromacy



Original Color
13481913

Protanomaly
12958394

Deuteranomaly
13547193

Tritanomaly
13547200

Monochromacy



Original Color
13481913

Achromatopsia
12500670

Achromatomaly
12827580

CSS Examples

Text

The CSS property to change the color of the text to Decimal 13481913 is called "color". The color property can be set on classes, ids or directly on the HTML element.

This example shows how text in the color #CDB7B9 looks like.

```
.text, #text, p{  
    color:#CDB7B9  
}
```

If you want to add a text shadow in that color use the text-shadow property, you can generate a text shadow directly with our [CSS Text Shadow Generator](#).

Here you see how black text with a 4 pixel #CDB7B9 colored shadow looks like.

```
.shadow{ text-shadow: 4px 4px 2px #CDB7B9
}
```

Border

The CSS property to change the border of an element to Decimal 13481913 is called "border". The border property can be set on classes, ids or directly on the HTML element.

This example shows the color as border, it can be applied via the CSS property "border" or "border-color".

```
.border, #border, table{ border:4px solid
#CDB7B9 }
```

If only the border color should be changed use the property `border-color`.

```
.border{ border-color:#CDB7B9 }
```

If you want to add a box shadow in that color use:

Here you see how a box with a 4 pixel #CDB7B9 colored shadow looks like.

```
.boxshadow{ -moz-box-shadow:4px 4px 4px  
4px #CDB7B9; -webkit-box-shadow:4px 4px  
4px 4px #CDB7B9; box-shadow:4px 4px 4px  
4px #CDB7B9 }
```

Background

The CSS property to change the background color of an element to Decimal 13481913 is called "background". The background property can be set on classes, ids or directly on the HTML element.

```
.background, #background, body{  
background:#CDB7B9 }
```

If only the background color should be changed can be used:

```
.background{ background-color:#CDB7B9 }
```

This example shows the color as background, it is applied via the CSS property "background".

To optimize and compress your CSS code, you can use our [online CSS compressor and optimizer](#) based on csstidy. If you want to create a linear or radial gradient as background or border, check our [CSS Gradient Generator](#).

Hey! You found this booklet interesting? Support Converting Colors with the new Membership Option!

The pro membership hides all ads, plus gives you double the colors in the color bucket, and more awesome pro features!

[Learn more, Memberships starting at \\$2.50/m!](#)

**Follow me
on Twitter!**

@ConvertingColor