

# Converting Colors

Decimal(13481920)

Have a look what the booklet for  
Decimal(13481920) contains.

<b>Decimal(13481920)</b> .....	3
<i><b>Conversions</b></i> .....	4
<i><b>Details</b></i> .....	6
<i><b>Harmonies</b></i> .....	11
<i><b>Previews</b></i> .....	23
<i><b>Color Blindness Simulation</b></i> .....	26
<i><b>CSS Examples</b></i> .....	29

# **Color**

**Decimal(13481920)**

# Conversions

## Conversions Part 1

<b>Format</b>	<b>Color</b>
Hex	CDB7C0
RGB	205, 183, 192
RGB Percent	80%, 72%, 75%
CMY	0.1961, 0.2824, 0.2471
CMYK	0.00, 0.11, 0.06, 0.20
HSL	335°, 18%, 76%
HSV	335°, 11%, 80%
XYZ	51.6248, 50.6519, 56.9250
YIQ	190.6040, 10.2230, 7.4630

# Conversions

## Conversions Part 2

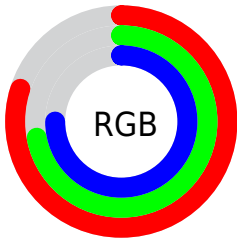
<b>Format</b>	<b>Color</b>
<b>R<sub>YB</sub></b>	205, 183, 192
Decimal	13481920
CIE <sub>Lab</sub>	76.47, 9.39, -1.69
CIE <sub>LCh</sub>	76, 9.536, 349.785
Yxy	50.6519, 0.3243, 0.3182
Android (android.graphics.Color)	4291672000 (0xFFCDB7C0)
YUV	190.6040, 0.6882, 12.6253
Hunter-Lab	71.1701, 4.9310, 2.3963

# Details

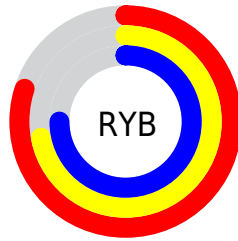
The Decimal color **13481920** is a light color, and the websafe version is hex **CCCCCC**. A complement of this color would be **12045764**, and the grayscale version is **12566463**.

A 20% lighter version of the original color is **16773112**, and **9929355** is the 20% darker color. If you saturate the color by 10%, you get **13476788**, and if you desaturate by 10%, it is **13487308**.

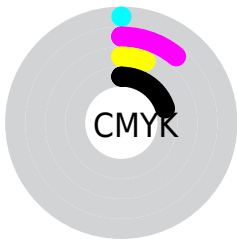
# Distribution



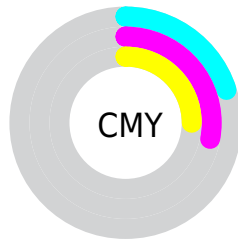
- Red (80%)
- Green (72%)
- Blue (75%)



- Red (80%)
- Yellow (72%)
- Blue (75%)



- Cyan (0%)
- Magenta (11%)
- Yellow (6%)
- Black (20%)



- Cyan (20%)
- Magenta (28%)
- Yellow (25%)

# Brightness & Saturation Gradients

These gradients show how the Decimal color 13481920 changes by changing the brightness by 10 percent. The first figure shows a shift by +10% for each color and the second figure -10%.

Similar to the brightness gradients but the following saturation gradients show a change of the Decimal color 13481920 by changing the saturation by 10% instead.



 13481920

 13481920

16777215

 11639973

 16773112

 9929355

 8218993

 6574425

 4995649

 3482667

 2035479

 0

 13481920

 13481920

 13476788

 13487308

 13471400

 13492440

 13466268

 13497828

 13460880

 13500400

 13455747

 13500413

 13450359

 13500415

 13444971

 13439839

 13434964

# Harmonies

## Analogous

The Analogous color harmony consists of three colors that are next to each other on the color wheel.



12958152



13481920



13678519

# Triad

The Triadic color harmony groups three colors that are evenly spaced from another and form a triangle on the color wheel.



13481920



12500652



11125194

# Complementary

The Complementary color scheme is a pair of colors which are on the opposite of each other on the color wheel.



13481920



12045764

# Split Complementary

Split-complementary colors differ from the complementary color scheme. The scheme consists of three colors, the original color and two neighbors of the complement color.



10994370



13481920



11780273

# Square

The Square scheme is like the rectangle color scheme, but the four colors are evenly spaced on the color wheel.



13481920



13089707



11256505



11583182

# Rectangle

The Rectangle color scheme consists of four colors that form a rectangle on the color wheel.



13481920



13613234



11256505



11059656



# Sweetspot

The Sweet Spot groups the original color and five complimentary colors.



13481920



16775162



12892109



8419964



0



8421504



# Same Dimension

The Same Dimension uses a secret algorithm to generate beautiful new colors.



13481920



16768747



13482423



6708320



10879044



2490384



# Inverse Universe

The Inverse Universe completely reimagines the original color for something new.



13481920



16768747



12045261



6708320



10879044

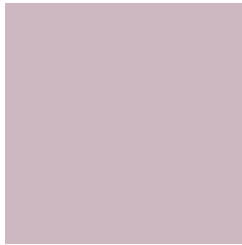


2490384



# Previews

## White Background



This preview shows how the Decimal color 13481920 looks on a white background.

## Color Contrast Check

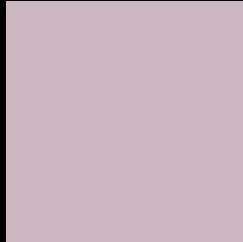
Large Text (above 18pt) WCAG AA × Fail

Any Text WCAG AA × Fail

Large Text (above 18pt) WCAG AAA × Fail

Any Text WCAG AAA × Fail

# Black Background



This preview shows how the Decimal color 13481920 looks on a black background.

## Color Contrast Check

Large Text (above 18pt) WCAG AA ✓ Pass

Any Text WCAG AA ✓ Pass

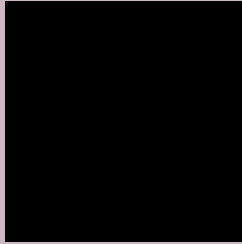
Large Text (above 18pt) WCAG AAA ✓ Pass

Any Text WCAG AAA ✓ Pass

If you want to check with other color combinations, try the [Color Contrast Checker](#).



## Decimal 13481920 Background



This preview shows how black text looks on a background with the Decimal color 13481920.



This preview shows how white text looks on a background with the Decimal color 13481920.

# Color Blindness Simulation

Color vision deficiency is a very complex topic, and I could not describe the different causes any better than Wikipedia does, so if you want to learn more, you should check out their [article about color blindness](#).

## Dichromacy





**Tritanopia**  
13547205

# Trichromacy



**Original Color**  
13481920

**Protanomaly**  
12827330

**Deuteranomaly**  
13481920

**Tritanomaly**  
13547203

# Monochromacy



**Original Color**  
13481920

**Achromatopsia**  
12566463

**Achromatomaly**  
12893375

# CSS Examples

## Text

The CSS property to change the color of the text to Decimal 13481920 is called "color". The color property can be set on classes, ids or directly on the HTML element.

This example shows how text in the color #CDB7C0 looks like.

```
.text, #text, p{  
  color:#CDB7C0  
}
```

If you want to add a text shadow in that color use the text-shadow property, you can generate a text shadow directly with our [CSS Text Shadow Generator](#).

Here you see how black text with a 4 pixel #CDB7C0 colored shadow looks like.

```
.shadow{ text-shadow: 4px 4px 2px #CDB7C0  
}
```

## Border

The CSS property to change the border of an element to Decimal 13481920 is called "border". The border property can be set on classes, ids or directly on the HTML element.

This example shows the color as border, it can be applied via the CSS property "border" or "border-color".

```
.border, #border, table{ border:4px solid  
#CDB7C0 }
```

If only the border color should be changed use the property `border-color`.

```
.border{ border-color:#CDB7C0 }
```

If you want to add a box shadow in that color use:

Here you see how a box with a 4 pixel #CDB7C0 colored shadow looks like.

```
.boxshadow{ -moz-box-shadow:4px 4px 4px  
4px #CDB7C0; -webkit-box-shadow:4px 4px  
4px 4px #CDB7C0; box-shadow:4px 4px 4px  
4px #CDB7C0 }
```

# Background

The CSS property to change the background color of an element to Decimal 13481920 is called "background". The background property can be set on classes, ids or directly on the HTML element.

```
.background, #background, body{  
background:#CDB7C0 }
```

If only the background color should be changed can be used:

```
.background{ background-color:#CDB7C0 }
```

This example shows the color as background, it is applied via the CSS property "background".

To optimize and compress your CSS code, you can use our [online CSS compressor and optimizer](#) based on csstidy. If you want to create a linear or radial gradient as background or border, check our [CSS Gradient Generator](#).



Hey! You found this booklet interesting? Support Converting Colors with the new Membership Option!

The pro membership hides all ads, plus gives you double the colors in the color bucket, and more awesome pro features!

**[Learn more, Memberships starting at \\$2.50/m!](#)**

**Follow me  
on Twitter!**

@ConvertingColor