

Converting Colors

Decimal(13483975)

Have a look what the booklet for
Decimal(13483975) contains.

Decimal(13483975)	3
<i>Conversions</i>	4
<i>Details</i>	6
<i>Harmonies</i>	11
<i>Previews</i>	23
<i>Color Blindness Simulation</i>	26
<i>CSS Examples</i>	29

Color

Decimal(13483975)

Conversions

Conversions Part 1

Format	Color
Hex	CDBFC7
RGB	205, 191, 199
RGB Percent	80%, 75%, 78%
CMY	0.1961, 0.2510, 0.2196
CMYK	0.00, 0.07, 0.03, 0.20
HSL	326°, 12%, 78%
HSV	326°, 7%, 80%
XYZ	54.1164, 54.3643, 61.6739
YIQ	196.0980, 5.7760, 5.4560

Conversions

Conversions Part 2

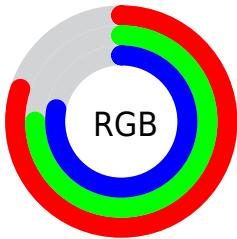
Format	Color
R _Y B	205, 191, 199
Decimal	13483975
CIE Lab	78.67, 6.34, -2.25
CIE LCh	79, 6.724, 340.461
Yxy	54.3643, 0.3180, 0.3195
Android (android.graphics.Color)	4291674055 (0xFFCDBFC7)
YUV	196.0980, 1.4307, 7.8071
Hunter-Lab	73.7321, 1.9807, 2.0188

Details

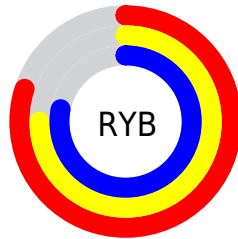
The Decimal color **13483975** is a light color, and the websafe version is hex **CCCCCC**. A complement of this color would be **12570053**, and the grayscale version is **12895428**.

A 20% lighter version of the original color is **16775167**, and **9931409** is the 20% darker color. If you saturate the color by 10%, you get **13478846**, and if you desaturate by 10%, it is **13489360**.

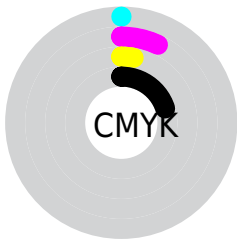
Distribution



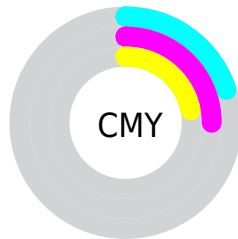
- Red (80%)
- Green (75%)
- Blue (78%)



- Red (80%)
- Yellow (75%)
- Blue (78%)



- Cyan (0%)
- Magenta (7%)
- Yellow (3%)
- Black (20%)



- Cyan (20%)
- Magenta (25%)
- Yellow (22%)

Brightness & Saturation Gradients

These gradients show how the Decimal color 13483975 changes by changing the brightness by 10 percent. The first figure shows a shift by +10% for each color and the second figure -10%.

Similar to the brightness gradients but the following saturation gradients show a change of the Decimal color 13483975 by changing the saturation by 10% instead.

 13483975	 13483975
16777215	 11707564
 16775167	 9931409
	 8220792
	 6576223
	 4997191
	 3484209
	 2102812
	 131072
	 0

 13483975

 13483975

 13478846

 13489360

 13473461

 13494489

 13468333

 13499873

 13462948

 13500394

 13457819

 13500403

 13452434

 13500412

 13447305

 13500415

 13441921

 13436792

Harmonies

Analogous

The Analogous color harmony consists of three colors that are next to each other on the color wheel.



13091020



13483975



13680577

Triad

The Triadic color harmony groups three colors that are evenly spaced from another and form a triangle on the color wheel.



13483975



13026230



11847371

Complementary

The Complementary color scheme is a pair of colors which are on the opposite of each other on the color wheel.



13483975



12570053

Split Complementary

Split-complementary colors differ from the complementary color scheme. The scheme consists of three colors, the original color and two neighbors of the complement color.



11847621



13483975



12502457

Square

The Square scheme is like the rectangle color scheme, but the four colors are evenly spaced on the color wheel.



13483975



13418935



12109502



12109006

Rectangle

The Rectangle color scheme consists of four colors that form a rectangle on the color wheel.



13483975



13680573



12109502



11847369

Sweetspot

The Sweet Spot groups the original color and five complimentary colors.



13483975



16775933



12959693



8420734



0



8421504

Same Dimension

The Same Dimension uses a secret algorithm to generate beautiful new colors.



13483975



16772086



13483968



6708322



10879071



2490390

Inverse Universe

The Inverse Universe completely reimagines the original color for something new.



13483975



16772086



12570060



6708322



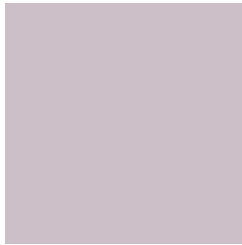
10879071



2490390

Previews

White Background



This preview shows how the Decimal color 13483975 looks on a white background.

Color Contrast Check

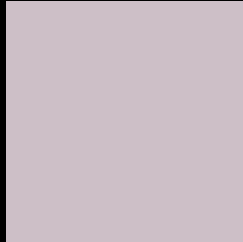
Large Text (above 18pt) WCAG AA × Fail

Any Text WCAG AA × Fail

Large Text (above 18pt) WCAG AAA × Fail

Any Text WCAG AAA × Fail

Black Background



This preview shows how the Decimal color 13483975 looks on a black background.

Color Contrast Check

Large Text (above 18pt) WCAG AA ✓ Pass

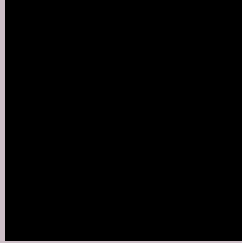
Any Text WCAG AA ✓ Pass

Large Text (above 18pt) WCAG AAA ✓ Pass

Any Text WCAG AAA ✓ Pass

If you want to check with other color combinations, try the [Color Contrast Checker](#).

Decimal 13483975 Background



This preview shows how black text looks on a background with the Decimal color 13483975.



This preview shows how white text looks on a background with the Decimal color 13483975.

Color Blindness Simulation

Color vision deficiency is a very complex topic, and I could not describe the different causes any better than Wikipedia does, so if you want to learn more, you should check out their [article about color blindness](#).

Dichromacy



Original Color


13483975

Protanopia

12894921

Deuteranopia

13876679



Tritanopia
13549261

Trichromacy



Original Color
13483975

Protanomaly
13091272

Deuteranomaly
13745863

Tritanomaly
13549259

Monochromacy



Original Color
13483975

Achromatopsia
12895428

Achromatomaly
13091525

CSS Examples

Text

The CSS property to change the color of the text to Decimal 13483975 is called "color". The color property can be set on classes, ids or directly on the HTML element.

This example shows how text in the color #CDBFC7 looks like.

```
.text, #text, p{  
    color:#CDBFC7  
}
```

If you want to add a text shadow in that color use the text-shadow property, you can generate a text shadow directly with our [CSS Text Shadow Generator](#).

Here you see how black text with a 4 pixel #CDBFC7 colored shadow looks like.

```
.shadow{ text-shadow: 4px 4px 2px #CDBFC7
}
```

Border

The CSS property to change the border of an element to Decimal 13483975 is called "border". The border property can be set on classes, ids or directly on the HTML element.

This example shows the color as border, it can be applied via the CSS property "border" or "border-color".

```
.border, #border, table{ border:4px solid
#CDBFC7 }
```

If only the border color should be changed use the property `border-color`.

```
.border{ border-color:#CDBFC7 }
```

If you want to add a box shadow in that color use:

Here you see how a box with a 4 pixel #CDBFC7 colored shadow looks like.

```
.boxshadow{ -moz-box-shadow:4px 4px 4px  
4px #CDBFC7; -webkit-box-shadow:4px 4px  
4px 4px #CDBFC7; box-shadow:4px 4px 4px  
4px #CDBFC7 }
```

Background

The CSS property to change the background color of an element to Decimal 13483975 is called "background". The background property can be set on classes, ids or directly on the HTML element.

```
.background, #background, body{  
background:#CDBFC7 }
```

If only the background color should be changed can be used:

```
.background{ background-color:#CDBFC7 }
```

This example shows the color as background, it is applied via the CSS property "background".

To optimize and compress your CSS code, you can use our [online CSS compressor and optimizer](#) based on csstidy. If you want to create a linear or radial gradient as background or border, check our [CSS Gradient Generator](#).

Hey! You found this booklet interesting? Support Converting Colors with the new Membership Option!

The pro membership hides all ads, plus gives you double the colors in the color bucket, and more awesome pro features!

[Learn more, Memberships starting at \\$2.50/m!](#)

**Follow me
on Twitter!**

@ConvertingColor