

Converting Colors

Decimal(13522567)

Have a look what the booklet for
Decimal(13522567) contains.

Decimal(13522567)	3
<i>Conversions</i>	4
<i>Details</i>	6
<i>Harmonies</i>	11
<i>Previews</i>	23
<i>Color Blindness Simulation</i>	26
<i>CSS Examples</i>	29

Color

Decimal(13522567)

Conversions

Conversions Part 1

Format	Color
Hex	CE5687
RGB	206, 86, 135
RGB Percent	81%, 34%, 53%
CMY	0.1922, 0.6627, 0.4706
CMYK	0.00, 0.58, 0.34, 0.19
HSL	336°, 55%, 57%
HSV	336°, 58%, 81%
XYZ	33.1546, 21.5267, 25.3293
YIQ	127.4660, 55.7910, 40.6790

Conversions

Conversions Part 2

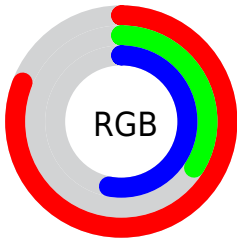
Format	Color
R_{YB}	206, 86, 135
Decimal	13522567
CIE _{Lab}	53.52, 52.31, -3.14
CIE _{LCh}	54, 52.404, 356.565
Yxy	21.5267, 0.4144, 0.2690
Android (android.graphics.Color)	4291712647 (0xFFCE5687)
YUV	127.4660, 3.7143, 68.8743
Hunter-Lab	46.3968, 46.3593, 0.1098

Details

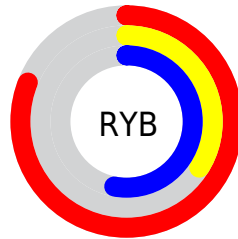
The Decimal color **13522567** is a dark color, and the websafe version is hex **CC6699**. The color can be described as middle muted rose. A complement of this color would be **5688989**, and the grayscale version is **8355711**.

A 20% lighter version of the original color is **16747964**, and **9706581** is the 20% darker color. If you saturate the color by 10%, you get **13517179**, and if you desaturate by 10%, it is **13527955**.

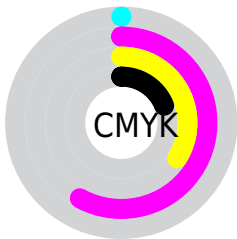
Distribution



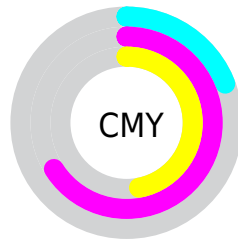
- Red (81%)
- Green (34%)
- Blue (53%)



- Red (81%)
- Yellow (34%)
- Blue (53%)



- Cyan (0%)
- Magenta (58%)
- Yellow (34%)
- Black (19%)



- Cyan (19%)
- Magenta (66%)
- Yellow (47%)

Brightness & Saturation Gradients

These gradients show how the Decimal color 13522567 changes by changing the brightness by 10 percent. The first figure shows a shift by +10% for each color and the second figure -10%.

Similar to the brightness gradients but the following saturation gradients show a change of the Decimal color 13522567 by changing the saturation by 10% instead.

 13522567

 13522567

16777215

 11614830

 16747964

 9706581

 16754904

 7864382

 16762356

 6029353

 16769791

 4259860

 2490369

 0

 13522567

 13522567

 13517179

 13527955

 13512047

 13533087

 13506658

 13538476

 13501526

 13543608

 13500500

 13548996

 13554384

 13559516

 13564905

 13565941

Harmonies

Analogous

The Analogous color harmony consists of three colors that are next to each other on the color wheel.



11690930



13522567



13654618

Triad

The Triadic color harmony groups three colors that are evenly spaced from another and form a triangle on the color wheel.



13522567



7375144



37323

Complementary

The Complementary color scheme is a pair of colors which are on the opposite of each other on the color wheel.



13522567



5688989

Split Complementary

Split-complementary colors differ from the complementary color scheme. The scheme consists of three colors, the original color and two neighbors of the complement color.



38311



13522567



3248460

Square

The Square scheme is like the rectangle color scheme, but the four colors are evenly spaced on the color wheel.



13522567



10255389



38265



34778

Rectangle

The Rectangle color scheme consists of four colors that form a rectangle on the color wheel.



13522567



13001792



38265



37825

Sweetspot

The Sweet Spot groups the original color and five complimentary colors.



13522567



16766181



10245838



8414832



0



8421504

Same Dimension

The Same Dimension uses a secret algorithm to generate beautiful new colors.



13522567



16731541



13525078



6708320



10879044



2490384

Inverse Universe

The Inverse Universe completely reimagines the original color for something new.



13522567



16731541



5686478



6708320



10879044



2490384

Previews

White Background



This preview shows how the Decimal color 13522567 looks on a white background.

Color Contrast Check

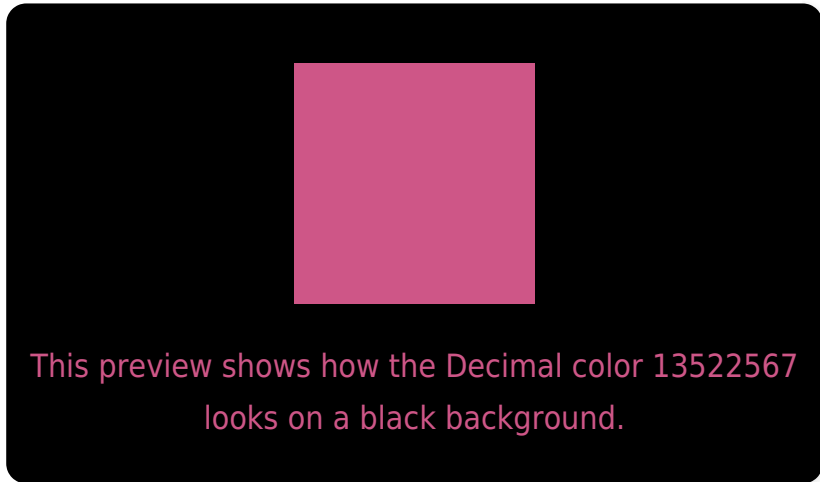
Large Text (above 18pt) WCAG AA ✓ Pass

Any Text WCAG AA × Fail

Large Text (above 18pt) WCAG AAA × Fail

Any Text WCAG AAA × Fail

Black Background



Color Contrast Check

Large Text (above 18pt) WCAG AA ✓ Pass

Any Text WCAG AA ✓ Pass

Large Text (above 18pt) WCAG AAA ✓ Pass

Any Text WCAG AAA × Fail

If you want to check with other color combinations, try the [Color Contrast Checker](#).

Decimal 13522567 Background



This preview shows how black text looks on a background with the Decimal color 13522567.




This preview shows how white text looks on a background with the Decimal color 13522567.

Color Blindness Simulation

Color vision deficiency is a very complex topic, and I could not describe the different causes any better than Wikipedia does, so if you want to learn more, you should check out their [article about color blindness](#).

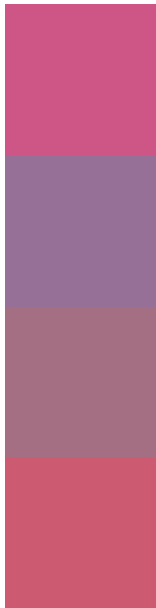
Dichromacy





Tritanopia
13327716

Trichromacy



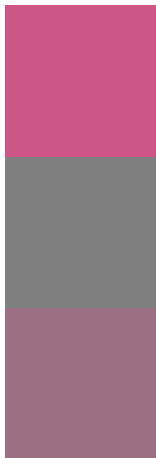
Original Color
13522567

Protanomaly
9924760

Deuteranomaly
10776195

Tritanomaly
13392497

Monochromacy



Original Color
13522567

Achromatopsia
8355711

Achromatomaly
10252418

CSS Examples

Text

The CSS property to change the color of the text to Decimal 13522567 is called "color". The color property can be set on classes, ids or directly on the HTML element.

This example shows how text in the color #CE5687 looks like.

```
.text, #text, p{  
    color:#CE5687  
}
```

If you want to add a text shadow in that color use the text-shadow property, you can generate a text shadow directly with our [CSS Text Shadow Generator](#).

Here you see how black text with a 4 pixel #CE5687 colored shadow looks like.

```
.shadow{ text-shadow: 4px 4px 2px #CE5687
}
```

Border

The CSS property to change the border of an element to Decimal 13522567 is called "border". The border property can be set on classes, ids or directly on the HTML element.

This example shows the color as border, it can be applied via the CSS property "border" or "border-color".

```
.border, #border, table{ border:4px solid
#CE5687 }
```

If only the border color should be changed use the property `border-color`.

```
.border{ border-color:#CE5687 }
```

If you want to add a box shadow in that color use:

Here you see how a box with a 4 pixel #CE5687 colored shadow looks like.

```
.boxshadow{ -moz-box-shadow:4px 4px 4px  
4px #CE5687; -webkit-box-shadow:4px 4px  
4px 4px #CE5687; box-shadow:4px 4px 4px  
4px #CE5687 }
```

Background

The CSS property to change the background color of an element to Decimal 13522567 is called "background". The background property can be set on classes, ids or directly on the HTML element.

```
.background, #background, body{  
background:#CE5687 }
```

If only the background color should be changed can be used:

```
.background{ background-color:#CE5687 }
```

This example shows the color as background, it is applied via the CSS property "background".

To optimize and compress your CSS code, you can use our [online CSS compressor and optimizer](#) based on csstidy. If you want to create a linear or radial gradient as background or border, check our [CSS Gradient Generator](#).

Hey! You found this booklet interesting? Support Converting Colors with the new Membership Option!

The pro membership hides all ads, plus gives you double the colors in the color bucket, and more awesome pro features!

[Learn more, Memberships starting at \\$2.50/m!](#)

**Follow me
on Twitter!**

@ConvertingColor