

# Converting Colors

Decimal(13533388)

Have a look what the booklet for  
Decimal(13533388) contains.

<b>Decimal(13533388)</b> .....	3
<i><b>Conversions</b></i> .....	4
<i><b>Details</b></i> .....	6
<i><b>Harmonies</b></i> .....	11
<i><b>Previews</b></i> .....	23
<i><b>Color Blindness Simulation</b></i> .....	26
<i><b>CSS Examples</b></i> .....	29

# **Color**

**Decimal(13533388)**

# Conversions

## Conversions Part 1

<b>Format</b>	<b>Color</b>
Hex	CE80CC
RGB	206, 128, 204
RGB Percent	81%, 50%, 80%
CMY	0.1922, 0.4980, 0.2000
CMYK	0.00, 0.38, 0.01, 0.19
HSL	302°, 44%, 65%
HSV	302°, 38%, 81%
XYZ	44.0719, 32.9198, 61.1581
YIQ	159.9860, 22.0920, 40.1720

# Conversions

## Conversions Part 2

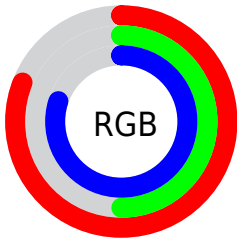
<b>Format</b>	<b>Color</b>
R <sub>Y</sub> B	206, 128, 204
Decimal	13533388
CIE Lab	64.10, 41.76, -26.92
CIE LCh	64, 49.684, 327.192
Yxy	32.9198, 0.3190, 0.2383
Android (android.graphics.Color)	4291723468 (0xFFCE80CC)
YUV	159.9860, 21.6989, 40.3543
Hunter-Lab	57.3758, 36.7030, -23.0354

# Details

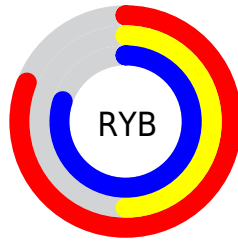
The Decimal color **13533388** is a light color, and the websafe version is hex **CC66CC**. A complement of this color would be **8441474**, and the grayscale version is **10526880**.

A 20% lighter version of the original color is **16758527**, and **9850006** is the 20% darker color. If you saturate the color by 10%, you get **13528011**, and if you desaturate by 10%, it is **13538765**.

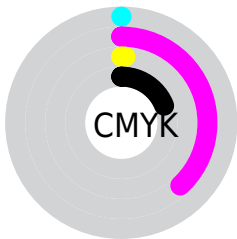
# Distribution



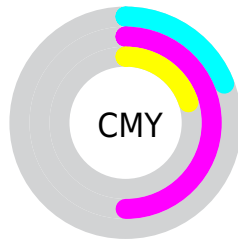
- Red (81%)
- Green (50%)
- Blue (80%)



- Red (81%)
- Yellow (50%)
- Blue (80%)



- Cyan (0%)
- Magenta (38%)
- Yellow (1%)
- Black (19%)



- Cyan (19%)
- Magenta (50%)
- Yellow (20%)

# Brightness & Saturation Gradients

These gradients show how the Decimal color 13533388 changes by changing the brightness by 10 percent. The first figure shows a shift by +10% for each color and the second figure -10%.

Similar to the brightness gradients but the following saturation gradients show a change of the Decimal color 13533388 by changing the saturation by 10% instead.



 13533388

 13533388

16777215

 11691696

 16758527

 9850006

 16765695

 8074108

 16773119

 6363490

 4718666

 3145779

 1310750

 0

 13533388

 13533388

 13528011

 13538765

 13522891

 13543885

 13517514

 13549262

 13512394

 13554382

 13507017

 13559759

 13501641

 13565135

 13500617

 13565904

 13565905

# Harmonies

## Analogous

The Analogous color harmony consists of three colors that are next to each other on the color wheel.



9933290



1353388



15365793

# Triad

The Triadic color harmony groups three colors that are evenly spaced from another and form a triangle on the color wheel.



13533388



12163135



45506

# Complementary

The Complementary color scheme is a pair of colors which are on the opposite of each other on the color wheel.



13533388



8441474

# Split Complementary

Split-complementary colors differ from the complementary color scheme. The scheme consists of three colors, the original color and two neighbors of the complement color.



45462



13533388



9282889

# Square

The Square scheme is like the rectangle color scheme, but the four colors are evenly spaced on the color wheel.



13533388



14321489



5549417



44261

# Rectangle

The Rectangle color scheme consists of four colors that form a rectangle on the color wheel.



13533388



15627908



5549417



45748



# Sweetspot

The Sweet Spot groups the original color and five complimentary colors.



13533388



16770046



8487118



8417151



0



8421504



# Same Dimension

The Same Dimension uses a secret algorithm to generate beautiful new colors.



13533388



16747772



13533350



6708326



10879138



2490405



# Inverse Universe

The Inverse Universe completely reimagines the original color for something new.



13533388



16747772



8441512



6708326



10879138

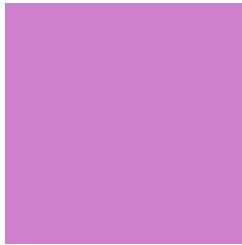


2490405



# Previews

## White Background



This preview shows how the Decimal color 13533388 looks on a white background.

## Color Contrast Check

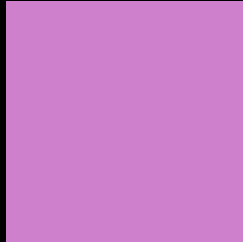
Large Text (above 18pt) WCAG AA × Fail

Any Text WCAG AA × Fail

Large Text (above 18pt) WCAG AAA × Fail

Any Text WCAG AAA × Fail

# Black Background



This preview shows how the Decimal color 13533388 looks on a black background.

## Color Contrast Check

Large Text (above 18pt) WCAG AA ✓ Pass

Any Text WCAG AA ✓ Pass

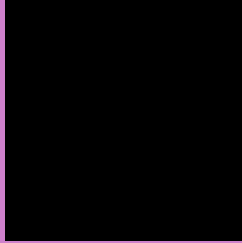
Large Text (above 18pt) WCAG AAA ✓ Pass

Any Text WCAG AAA ✓ Pass

If you want to check with other color combinations, try the [Color Contrast Checker](#).



## Decimal 13533388 Background



This preview shows how black text looks on a background with the Decimal color 13533388.



This preview shows how white text looks on a background with the Decimal color 13533388.

# Color Blindness Simulation

Color vision deficiency is a very complex topic, and I could not describe the different causes any better than Wikipedia does, so if you want to learn more, you should check out their [article about color blindness](#).

## Dichromacy





**Tritanopia**  
13077398

# Trichromacy



**Original Color**  
13533388



**Protanomaly**  
10522840



**Deuteranomaly**  
11112649

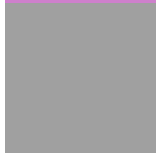


**Tritanomaly**  
13273002

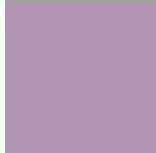
# Monochromacy



**Original Color**  
13533388



**Achromatopsia**  
10526880



**Achromatomaly**  
11637936

# CSS Examples

## Text

The CSS property to change the color of the text to Decimal 13533388 is called "color". The color property can be set on classes, ids or directly on the HTML element.

This example shows how text in the color #CE80CC looks like.

```
.text, #text, p{  
    color:#CE80CC  
}
```

If you want to add a text shadow in that color use the text-shadow property, you can generate a text shadow directly with our [CSS Text Shadow Generator](#).

Here you see how black text with a 4 pixel #CE80CC colored shadow looks like.

```
.shadow{ text-shadow: 4px 4px 2px #CE80CC
}
```

## Border

The CSS property to change the border of an element to Decimal 13533388 is called "border". The border property can be set on classes, ids or directly on the HTML element.

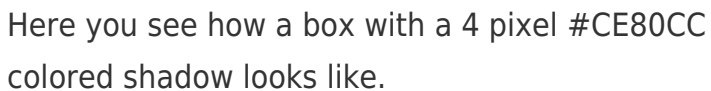
This example shows the color as border, it can be applied via the CSS property "border" or "border-color".

```
.border, #border, table{ border:4px solid
#CE80CC }
```

If only the border color should be changed use the property `border-color`.

```
.border{ border-color:#CE80CC }
```

If you want to add a box shadow in that color use:



Here you see how a box with a 4 pixel `#CE80CC` colored shadow looks like.

```
.boxshadow{ -moz-box-shadow:4px 4px 4px  
4px #CE80CC; -webkit-box-shadow:4px 4px  
4px 4px #CE80CC; box-shadow:4px 4px 4px  
4px #CE80CC }
```

# Background

The CSS property to change the background color of an element to Decimal 13533388 is called "background". The background property can be set on classes, ids or directly on the HTML element.

```
.background, #background, body{  
background:#CE80CC }
```

If only the background color should be changed can be used:

```
.background{ background-color:#CE80CC }
```

This example shows the color as background, it is applied via the CSS property "background".

To optimize and compress your CSS code, you can use our [online CSS compressor and optimizer](#) based on csstidy. If you want to create a linear or radial gradient as background or border, check our [CSS Gradient Generator](#).



Hey! You found this booklet interesting? Support Converting Colors with the new Membership Option!

The pro membership hides all ads, plus gives you double the colors in the color bucket, and more awesome pro features!

**[Learn more, Memberships starting at \\$2.50/m!](#)**

**Follow me  
on Twitter!**

@ConvertingColor