

Converting Colors

Decimal(13534864)

Have a look what the booklet for
Decimal(13534864) contains.

Decimal(13534864)	3
<i>Conversions</i>	4
<i>Details</i>	6
<i>Harmonies</i>	11
<i>Previews</i>	23
<i>Color Blindness Simulation</i>	26
<i>CSS Examples</i>	29

Color

Decimal(13534864)

Conversions

Conversions Part 1

Format	Color
Hex	CE8690
RGB	206, 134, 144
RGB Percent	81%, 53%, 56%
CMY	0.1922, 0.4745, 0.4353
CMYK	0.00, 0.35, 0.30, 0.19
HSL	352°, 42%, 67%
HSV	352°, 35%, 81%
XYZ	39.0127, 32.1856, 30.5418
YIQ	156.6680, 39.7020, 18.3740

Conversions

Conversions Part 2

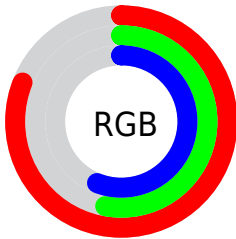
Format	Color
R _Y B	206, 134, 144
Decimal	13534864
CIE Lab	63.50, 28.93, 6.14
CIE LCh	63, 29.575, 11.985
Yxy	32.1856, 0.3835, 0.3164
Android (android.graphics.Color)	4291724944 (0xFFCE8690)
YUV	156.6680, -6.2453, 43.2642
Hunter-Lab	56.7324, 23.4661, 7.7940

Details

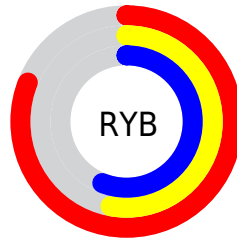
The Decimal color **13534864** is a light color, and the websafe version is hex **CC9999**. A complement of this color would be **8834756**, and the grayscale version is **10329501**.

A 20% lighter version of the original color is **16760006**, and **9851742** is the 20% darker color. If you saturate the color by 10%, you get **13529470**, and if you desaturate by 10%, it is **13540258**.

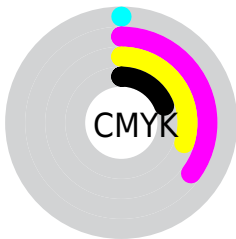
Distribution



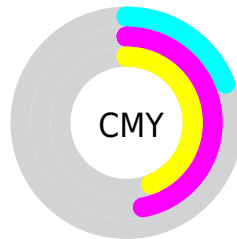
- Red (81%)
- Green (53%)
- Blue (56%)



- Red (81%)
- Yellow (53%)
- Blue (56%)



- Cyan (0%)
- Magenta (35%)
- Yellow (30%)
- Black (19%)



- Cyan (19%)
- Magenta (47%)
- Yellow (44%)

Brightness & Saturation Gradients

These gradients show how the Decimal color 13534864 changes by changing the brightness by 10 percent. The first figure shows a shift by +10% for each color and the second figure -10%.

Similar to the brightness gradients but the following saturation gradients show a change of the Decimal color 13534864 by changing the saturation by 10% instead.

 13534864

 13534864


16777215

 11693174

 16760006

 9851742

 16767202

 8076102

 16774654

 6300464

 4655899

 3145728

 131072

 0

 13534864

 13534864

 13529470

 13540258

 13524333

 13545395

 13518939

 13550789

 13513801

 13555927

 13508407

 13561321

 13503014

 13565946

 13500445

 13565951

Harmonies

Analogous

The Analogous color harmony consists of three colors that are next to each other on the color wheel.



12880043



13534864



13273720

Triad

The Triadic color harmony groups three colors that are evenly spaced from another and form a triangle on the color wheel.



13534864



8692594



6267339

Complementary

The Complementary color scheme is a pair of colors which are on the opposite of each other on the color wheel.



13534864



8834756

Split Complementary

Split-complementary colors differ from the complementary color scheme. The scheme consists of three colors, the original color and two neighbors of the complement color.



4433596



13534864



6662025

Square

The Square scheme is like the rectangle color scheme, but the four colors are evenly spaced on the color wheel.



13534864



10591334



4827300



8886733

Rectangle

The Rectangle color scheme consists of four colors that form a rectangle on the color wheel.



13534864



12619884



4827300



5481416

Sweetspot

The Sweet Spot groups the original color and five complimentary colors.



13534864



16770793



12814030



8417394



0



8421504

Same Dimension

The Same Dimension uses a secret algorithm to generate beautiful new colors.



13534864



16749731



13541254



6708317



10878999



2490373

Inverse Universe

The Inverse Universe completely reimagines the original color for something new.



13534864



16749731



8828366



6708317



10878999



2490373

Previews

White Background



This preview shows how the Decimal color 13534864 looks on a white background.

Color Contrast Check

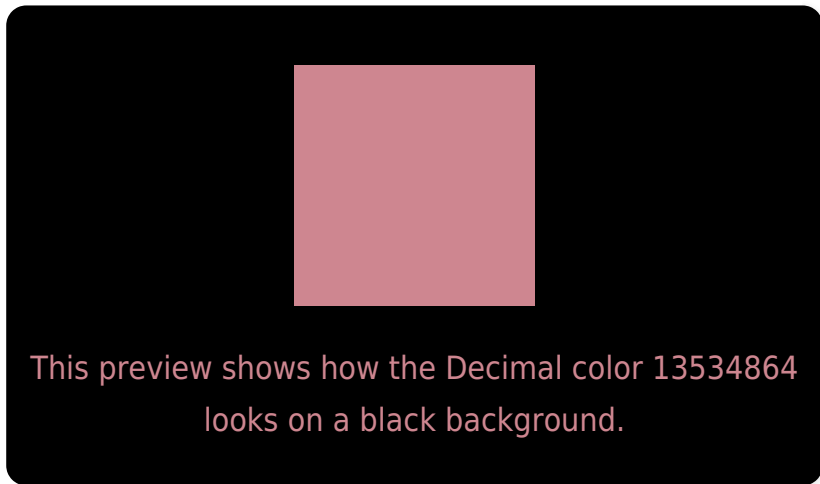
Large Text (above 18pt) WCAG AA × Fail

Any Text WCAG AA × Fail

Large Text (above 18pt) WCAG AAA × Fail

Any Text WCAG AAA × Fail

Black Background



Color Contrast Check

Large Text (above 18pt) WCAG AA ✓ Pass

Any Text WCAG AA ✓ Pass

Large Text (above 18pt) WCAG AAA ✓ Pass

Any Text WCAG AAA ✓ Pass

If you want to check with other color combinations, try the [Color Contrast Checker](#).

Decimal 13534864 Background



This preview shows how black text looks on a background with the Decimal color 13534864.



This preview shows how white text looks on a background with the Decimal color 13534864.

Color Blindness Simulation

Color vision deficiency is a very complex topic, and I could not describe the different causes any better than Wikipedia does, so if you want to learn more, you should check out their [article about color blindness](#).


Dichromacy



Original Color
13534864

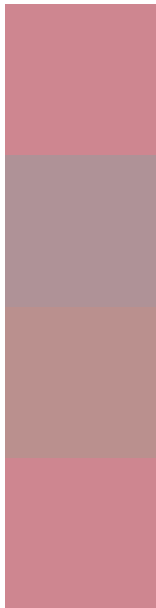
Protanopia
10328475

Deuteranopia
11441549



Tritanopia
13534864

Trichromacy



Original Color
13534864

Protanomaly
11506327

Deuteranomaly
12226702

Tritanomaly
13534864

Monochromacy



Original Color
13534864

Achromatopsia
10329501

Achromatomaly
11507096

CSS Examples

Text

The CSS property to change the color of the text to Decimal 13534864 is called "color". The color property can be set on classes, ids or directly on the HTML element.

This example shows how text in the color #CE8690 looks like.

```
.text, #text, p{  
    color:#CE8690  
}
```

If you want to add a text shadow in that color use the text-shadow property, you can generate a text shadow directly with our [CSS Text Shadow Generator](#).

Here you see how black text with a 4 pixel #CE8690 colored shadow looks like.

```
.shadow{ text-shadow: 4px 4px 2px #CE8690
}
```

Border

The CSS property to change the border of an element to Decimal 13534864 is called "border". The border property can be set on classes, ids or directly on the HTML element.

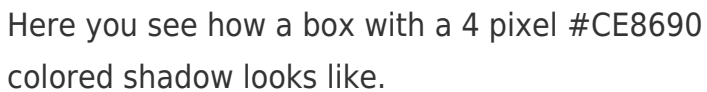
This example shows the color as border, it can be applied via the CSS property "border" or "border-color".

```
.border, #border, table{ border:4px solid
#CE8690 }
```

If only the border color should be changed use the property `border-color`.

```
.border{ border-color:#CE8690 }
```

If you want to add a box shadow in that color use:

A rectangular box with a 4px red shadow. The box is white with a thin red border. The shadow is a darker red color, extending 4 pixels from the bottom and right edges of the box.

Here you see how a box with a 4 pixel `#CE8690` colored shadow looks like.

```
.boxshadow{ -moz-box-shadow:4px 4px 4px  
4px #CE8690; -webkit-box-shadow:4px 4px  
4px 4px #CE8690; box-shadow:4px 4px 4px  
4px #CE8690 }
```

Background

The CSS property to change the background color of an element to Decimal 13534864 is called "background". The background property can be set on classes, ids or directly on the HTML element.

```
.background, #background, body{  
background:#CE8690 }
```

If only the background color should be changed can be used:

```
.background{ background-color:#CE8690 }
```

This example shows the color as background, it is applied via the CSS property "background".

To optimize and compress your CSS code, you can use our [online CSS compressor and optimizer](#) based on csstidy. If you want to create a linear or radial gradient as background or border, check our [CSS Gradient Generator](#).

Hey! You found this booklet interesting? Support Converting Colors with the new Membership Option!

The pro membership hides all ads, plus gives you double the colors in the color bucket, and more awesome pro features!

[Learn more, Memberships starting at \\$2.50/m!](#)

**Follow me
on Twitter!**

@ConvertingColor