

# Converting Colors

Decimal(13537682)

Have a look what the booklet for  
Decimal(13537682) contains.

<b>Decimal(13537682)</b> .....	3
<i><b>Conversions</b></i> .....	4
<i><b>Details</b></i> .....	6
<i><b>Harmonies</b></i> .....	11
<i><b>Previews</b></i> .....	23
<i><b>Color Blindness Simulation</b></i> .....	26
<i><b>CSS Examples</b></i> .....	29

# **Color**

**Decimal(13537682)**

# Conversions

## Conversions Part 1

Format	Color
Hex	CE9192
RGB	206, 145, 146
RGB Percent	81%, 57%, 57%
CMY	0.1922, 0.4314, 0.4275
CMYK	0.00, 0.30, 0.29, 0.19
HSL	359°, 38%, 69%
HSV	359°, 30%, 81%
XYZ	40.7673, 35.4479, 31.8876
YIQ	163.3530, 36.0350, 13.2430

# Conversions

## Conversions Part 2

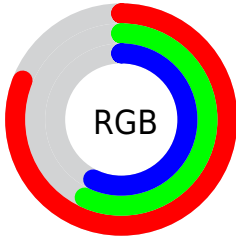
<b>Format</b>	<b>Color</b>
<b>R<sub>YB</sub></b>	206, 145, 146
Decimal	13537682
CIE <sub>Lab</sub>	66.10, 23.21, 8.73
CIE <sub>LCh</sub>	66, 24.800, 20.607
Yxy	35.4479, 0.3771, 0.3279
Android (android.graphics.Color)	4291727762 (0xFFCE9192)
YUV	163.3530, -8.5550, 37.4014
Hunter-Lab	59.5382, 18.0317, 9.9220

# Details

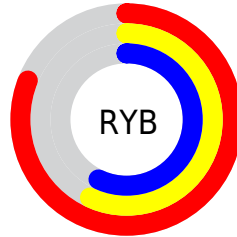
The Decimal color **13537682** is a light color, and the websafe version is hex **CC9999**. A complement of this color would be **9555661**, and the grayscale version is **10724259**.

A 20% lighter version of the original color is **16762824**, and **9854560** is the 20% darker color. If you saturate the color by 10%, you get **13532286**, and if you desaturate by 10%, it is **13543078**.

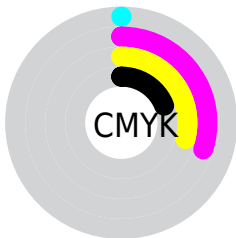
# Distribution



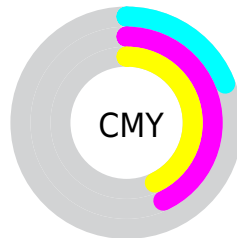
- Red (81%)
- Green (57%)
- Blue (57%)



- Red (81%)
- Yellow (57%)
- Blue (57%)



- Cyan (0%)
- Magenta (30%)
- Yellow (29%)
- Black (19%)



- Cyan (19%)
- Magenta (43%)
- Yellow (43%)

# Brightness & Saturation Gradients

These gradients show how the Decimal color 13537682 changes by changing the brightness by 10 percent. The first figure shows a shift by +10% for each color and the second figure -10%.

Similar to the brightness gradients but the following saturation gradients show a change of the Decimal color 13537682 by changing the saturation by 10% instead.



 13537682

 13537682

16777215

 11695992

 16762824

 9854560

 16770020

 8078920

 6369074

 4724765

 3146242

 1048576

 0

 13537682

 13537682

 13532286

 13543078

 13527145

 13548219

 13521749

 13553615

 13516609

 13558755

 13511213

 13564151

 13505816

 13565951

 13500676

 13500419

# Harmonies

## Analogous

The Analogous color harmony consists of three colors that are next to each other on the color wheel.



13144489



13537682



13145727

# Triad

The Triadic color harmony groups three colors that are evenly spaced from another and form a triangle on the color wheel.



13537682



8891012



8103372

# Complementary

The Complementary color scheme is a pair of colors which are on the opposite of each other on the color wheel.



13537682



9555661

# Split Complementary

Split-complementary colors differ from the complementary color scheme. The scheme consists of three colors, the original color and two neighbors of the complement color.



6531778



13537682



7318937

# Square

The Square scheme is like the rectangle color scheme, but the four colors are evenly spaced on the color wheel.



13537682



10593399



6270383



10198474

# Rectangle

The Rectangle color scheme consists of four colors that form a rectangle on the color wheel.



13537682



12491383



6270383



7514058



# Sweetspot

The Sweet Spot groups the original color and five complimentary colors.



13537682



16771304



13472206



8417650



0



8421504



# Same Dimension

The Same Dimension uses a secret algorithm to generate beautiful new colors.



13537682



16753573



13545105



6708316



10878979



2490369



# Inverse Universe

The Inverse Universe completely reimagines the original color for something new.



13537682



16753573



9548238



6708316



10878979

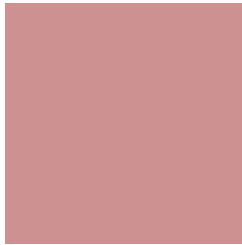


2490369



# Previews

## White Background



This preview shows how the Decimal color 13537682 looks on a white background.

## Color Contrast Check

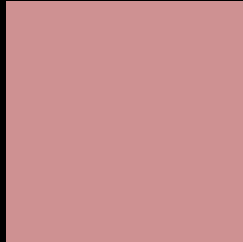
Large Text (above 18pt) WCAG AA × Fail

Any Text WCAG AA × Fail

Large Text (above 18pt) WCAG AAA × Fail

Any Text WCAG AAA × Fail

# Black Background



This preview shows how the Decimal color 13537682 looks on a black background.

## Color Contrast Check

Large Text (above 18pt) WCAG AA ✓ Pass

Any Text WCAG AA ✓ Pass

Large Text (above 18pt) WCAG AAA ✓ Pass

Any Text WCAG AAA ✓ Pass

If you want to check with other color combinations, try the [Color Contrast Checker](#).



## Decimal 13537682 Background



This preview shows how black text looks on a background with the Decimal color 13537682.



This preview shows how white text looks on a background with the Decimal color 13537682.

# Color Blindness Simulation

Color vision deficiency is a very complex topic, and I could not describe the different causes any better than Wikipedia does, so if you want to learn more, you should check out their [article about color blindness](#).

## Dichromacy





**Tritanopia**  
13602971

# Trichromacy



**Original Color**  
13537682

**Protanomaly**  
11836311

**Deuteranomaly**  
12556177

**Tritanomaly**  
13602968

# Monochromacy



**Original Color**  
13537682

**Achromatopsia**  
10724259

**Achromatomaly**  
11771037

# CSS Examples

## Text

The CSS property to change the color of the text to Decimal 13537682 is called "color". The color property can be set on classes, ids or directly on the HTML element.

This example shows how text in the color #CE9192 looks like.

```
.text, #text, p{  
    color:#CE9192  
}
```

If you want to add a text shadow in that color use the text-shadow property, you can generate a text shadow directly with our [CSS Text Shadow Generator](#).

Here you see how black text with a 4 pixel #CE9192 colored shadow looks like.

```
.shadow{ text-shadow: 4px 4px 2px #CE9192
}
```

## Border

The CSS property to change the border of an element to Decimal 13537682 is called "border". The border property can be set on classes, ids or directly on the HTML element.

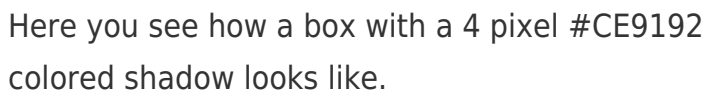
This example shows the color as border, it can be applied via the CSS property "border" or "border-color".

```
.border, #border, table{ border:4px solid
#CE9192 }
```

If only the border color should be changed use the property border-color.

```
.border{ border-color:#CE9192 }
```

If you want to add a box shadow in that color use:



Here you see how a box with a 4 pixel #CE9192 colored shadow looks like.

```
.boxshadow{ -moz-box-shadow:4px 4px 4px  
4px #CE9192; -webkit-box-shadow:4px 4px  
4px 4px #CE9192; box-shadow:4px 4px 4px  
4px #CE9192 }
```

# Background

The CSS property to change the background color of an element to Decimal 13537682 is called "background". The background property can be set on classes, ids or directly on the HTML element.

```
.background, #background, body{  
background:#CE9192 }
```

If only the background color should be changed can be used:

```
.background{ background-color:#CE9192 }
```

This example shows the color as background, it is applied via the CSS property "background".

To optimize and compress your CSS code, you can use our [online CSS compressor and optimizer](#) based on csstidy. If you want to create a linear or radial gradient as background or border, check our [CSS Gradient Generator](#).



Hey! You found this booklet interesting? Support Converting Colors with the new Membership Option!

The pro membership hides all ads, plus gives you double the colors in the color bucket, and more awesome pro features!

**[Learn more, Memberships starting at \\$2.50/m!](#)**

**Follow me  
on Twitter!**

@ConvertingColor