

Converting Colors

Decimal(13538170)

Have a look what the booklet for
Decimal(13538170) contains.

Decimal(13538170)	3
<i>Conversions</i>	4
<i>Details</i>	6
<i>Harmonies</i>	11
<i>Previews</i>	23
<i>Color Blindness Simulation</i>	26
<i>CSS Examples</i>	29

Color

Decimal(13538170)

Conversions

Conversions Part 1

Format	Color
Hex	CE937A
RGB	206, 147, 122
RGB Percent	81%, 58%, 48%
CMY	0.1922, 0.4235, 0.5216
CMYK	0.00, 0.29, 0.41, 0.19
HSL	18°, 46%, 64%
HSV	18°, 41%, 81%
XYZ	39.4002, 35.3944, 23.1675
YIQ	161.7910, 43.1890, 4.7330

Conversions

Conversions Part 2

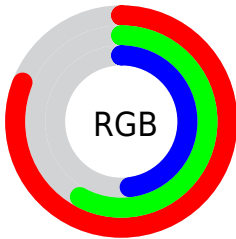
Format	Color
R _Y B	206, 158, 122
Decimal	13538170
CIE Lab	66.05, 19.13, 22.07
CIE LCh	66, 29.209, 49.089
Yxy	35.3944, 0.4022, 0.3613
Android (android.graphics.Color)	4291728250 (0xFFCE937A)
YUV	161.7910, -19.6170, 38.7713
Hunter-Lab	59.4932, 14.1010, 18.5568

Details

The Decimal color **13538170** is a light color, and the websafe version is hex **CC9966**. A complement of this color would be **8041934**, and the grayscale version is **10658466**.

A 20% lighter version of the original color is **16763311**, and **9855049** is the 20% darker color. If you saturate the color by 10%, you get **13534565**, and if you desaturate by 10%, it is **13541775**.

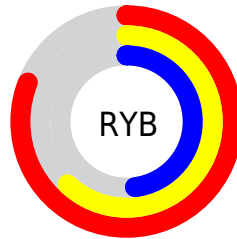
Distribution



Red (81%)

Green (58%)

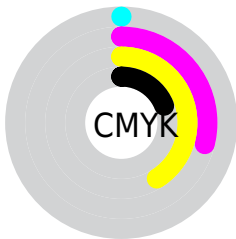
Blue (48%)



Red (81%)

Yellow (62%)

Blue (48%)

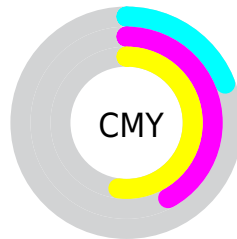


Cyan (0%)

Magenta (29%)

Yellow (41%)

Black (19%)



Cyan (19%)

Magenta (42%)

Yellow (52%)

Brightness & Saturation Gradients

These gradients show how the Decimal color 13538170 changes by changing the brightness by 10 percent. The first figure shows a shift by +10% for each color and the second figure -10%.

Similar to the brightness gradients but the following saturation gradients show a change of the Decimal color 13538170 by changing the saturation by 10% instead.

 13538170

 13538170

16777215

 11630945

 16763311

 9855049

 16770506

 8013874

 16777190

 6304029

 4594437

 2950400

 393216

 0

 13538170

 13538170

 13534565

 13541775

 13530705

 13545635

 13527100

 13549240

 13523240

 13553100

 13519635

 13556705

 13516032

 13560566

 13564159

 13565951

Harmonies

Analogous

The Analogous color harmony consists of three colors that are next to each other on the color wheel.



13995665



13538170



12360813

Triad

The Triadic color harmony groups three colors that are evenly spaced from another and form a triangle on the color wheel.



13538170



6663830



9936338

Complementary

The Complementary color scheme is a pair of colors which are on the opposite of each other on the color wheel.



13538170



8041934

Split Complementary

Split-complementary colors differ from the complementary color scheme. The scheme consists of three colors, the original color and two neighbors of the complement color.



7382739



13538170



5156785

Square

The Square scheme is like the rectangle color scheme, but the four colors are evenly spaced on the color wheel.



13538170



8694653



5352647



12096707

Rectangle

The Rectangle color scheme consists of four colors that form a rectangle on the color wheel.



13538170



11247980



5352647



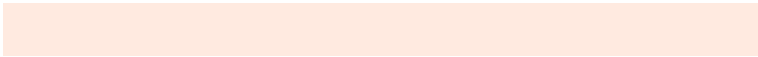
9085140

Sweetspot

The Sweet Spot groups the original color and five complimentary colors.



13538170



16771808



13531830



8418158



0



8421504

Same Dimension

The Same Dimension uses a secret algorithm to generate beautiful new colors.



13538170



16754562



13548666



6709084



10891520



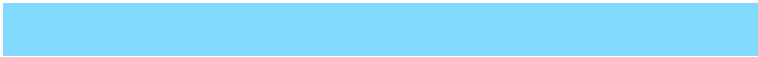
2493184

Inverse Universe

The Inverse Universe completely reimagines the original color for something new.



8041934



8575743



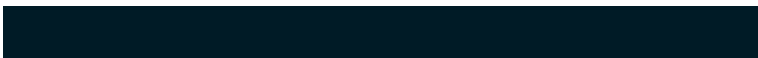
8031438



6054758



29862



6950

Previews

White Background



This preview shows how the Decimal color 13538170 looks on a white background.

Color Contrast Check

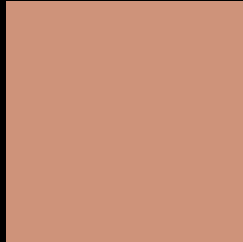
Large Text (above 18pt) WCAG AA × Fail

Any Text WCAG AA × Fail

Large Text (above 18pt) WCAG AAA × Fail

Any Text WCAG AAA × Fail

Black Background



This preview shows how the Decimal color 13538170 looks on a black background.

Color Contrast Check

Large Text (above 18pt) WCAG AA ✓ Pass

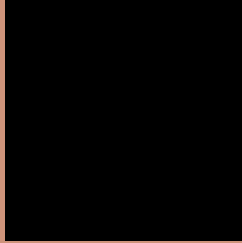
Any Text WCAG AA ✓ Pass

Large Text (above 18pt) WCAG AAA ✓ Pass

Any Text WCAG AAA ✓ Pass

If you want to check with other color combinations, try the [Color Contrast Checker](#).

Decimal 13538170 Background



This preview shows how black text looks on a background with the Decimal color 13538170.



This preview shows how white text looks on a background with the Decimal color 13538170.

Color Blindness Simulation

Color vision deficiency is a very complex topic, and I could not describe the different causes any better than Wikipedia does, so if you want to learn more, you should check out their [article about color blindness](#).

Dichromacy





Tritanopia
13733785

Trichromacy



Original Color
13538170

Protanomaly
12098686

Deuteranomaly
12883833

Tritanomaly
13668494

Monochromacy



Original Color
13538170

Achromatopsia
10658466

Achromatomaly
11705747

CSS Examples

Text

The CSS property to change the color of the text to Decimal 13538170 is called "color". The color property can be set on classes, ids or directly on the HTML element.

This example shows how text in the color #CE937A looks like.

```
.text, #text, p{  
    color:#CE937A  
}
```

If you want to add a text shadow in that color use the text-shadow property, you can generate a text shadow directly with our [CSS Text Shadow Generator](#).

Here you see how black text with a 4 pixel #CE937A colored shadow looks like.

```
.shadow{ text-shadow: 4px 4px 2px #CE937A
}
```

Border

The CSS property to change the border of an element to Decimal 13538170 is called "border". The border property can be set on classes, ids or directly on the HTML element.

This example shows the color as border, it can be applied via the CSS property "border" or "border-color".

```
.border, #border, table{ border:4px solid
#CE937A }
```

If only the border color should be changed use the property `border-color`.

```
.border{ border-color:#CE937A }
```

If you want to add a box shadow in that color use:

Here you see how a box with a 4 pixel #CE937A colored shadow looks like.

```
.boxshadow{ -moz-box-shadow:4px 4px 4px  
4px #CE937A; -webkit-box-shadow:4px 4px  
4px 4px #CE937A; box-shadow:4px 4px 4px  
4px #CE937A }
```

Background

The CSS property to change the background color of an element to Decimal 13538170 is called "background". The background property can be set on classes, ids or directly on the HTML element.

```
.background, #background, body{  
background:#CE937A }
```

If only the background color should be changed can be used:

```
.background{ background-color:#CE937A }
```

This example shows the color as background, it is applied via the CSS property "background".

To optimize and compress your CSS code, you can use our [online CSS compressor and optimizer](#) based on csstidy. If you want to create a linear or radial gradient as background or border, check our [CSS Gradient Generator](#).

Hey! You found this booklet interesting? Support Converting Colors with the new Membership Option!

The pro membership hides all ads, plus gives you double the colors in the color bucket, and more awesome pro features!

[Learn more, Memberships starting at \\$2.50/m!](#)

**Follow me
on Twitter!**

@ConvertingColor