

# Converting Colors

Decimal(13538418)

Have a look what the booklet for  
Decimal(13538418) contains.

<b>Decimal(13538418)</b> .....	3
<i><b>Conversions</b></i> .....	4
<i><b>Details</b></i> .....	6
<i><b>Harmonies</b></i> .....	11
<i><b>Previews</b></i> .....	23
<i><b>Color Blindness Simulation</b></i> .....	26
<i><b>CSS Examples</b></i> .....	29

# **Color**

**Decimal(13538418)**

# Conversions

## Conversions Part 1

Format	Color
Hex	CE9472
RGB	206, 148, 114
RGB Percent	81%, 58%, 45%
CMY	0.1922, 0.4196, 0.5529
CMYK	0.00, 0.28, 0.45, 0.19
HSL	22°, 48%, 63%
HSV	22°, 45%, 81%
XYZ	39.0808, 35.5165, 20.7152
YIQ	161.4660, 45.4820, 1.7220

# Conversions

## Conversions Part 2

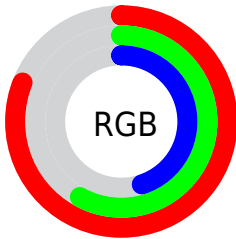
Format	Color
R <sub>Y</sub> B	206, 168, 114
Decimal	13538418
CIE Lab	66.15, 17.71, 26.61
CIE LCh	66, 31.963, 56.349
Yxy	35.5165, 0.4100, 0.3726
Android (android.graphics.Color)	4291728498 (0xFFCE9472)
YUV	161.4660, -23.4007, 39.0563
Hunter-Lab	59.5957, 12.7614, 21.1081

# Details

The Decimal color **13538418** is a light color, and the websafe version is hex **CC9966**. A complement of this color would be **7515342**, and the grayscale version is **10658466**.

A 20% lighter version of the original color is **16763558**, and **9789762** is the 20% darker color. If you saturate the color by 10%, you get **13535069**, and if you desaturate by 10%, it is **13541767**.

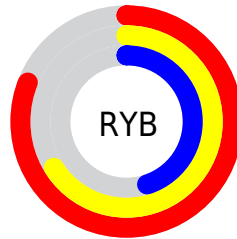
# Distribution



Red (81%)

Green (58%)

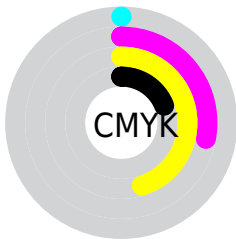
Blue (45%)



Red (81%)

Yellow (66%)

Blue (45%)

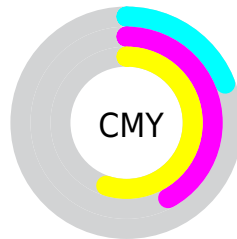


Cyan (0%)

Magenta (28%)

Yellow (45%)

Black (19%)



Cyan (19%)

Magenta (42%)

Yellow (55%)

# Brightness & Saturation Gradients

These gradients show how the Decimal color 13538418 changes by changing the brightness by 10 percent. The first figure shows a shift by +10% for each color and the second figure -10%.

Similar to the brightness gradients but the following saturation gradients show a change of the Decimal color 13538418 by changing the saturation by 10% instead.



 13538418

 13538418

16777215

 11631193

 16763558

 9789762

 16770753

 8014123

 16777181

 6238741

 16777210

 4594688

 2885376

 196608

 0

 13538418

 13538418

 13535069

 13541767

 13531721

 13545115

 13528372

 13548464

 13525024

 13551812

 13521675

 13555161

 13519872

 13558510

 13561855

 13565183

 13565951

# Harmonies

## Analogous

The Analogous color harmony consists of three colors that are next to each other on the color wheel.



14257545



13538418



12099175

# Triad

The Triadic color harmony groups three colors that are evenly spaced from another and form a triangle on the color wheel.



13538418



5681308



10525652

# Complementary

The Complementary color scheme is a pair of colors which are on the opposite of each other on the color wheel.



13538418



7515342

# Split Complementary

Split-complementary colors differ from the complementary color scheme. The scheme consists of three colors, the original color and two neighbors of the complement color.



7644634



13538418



4042937

# Square

The Square scheme is like the rectangle color scheme, but the four colors are evenly spaced on the color wheel.



13538418



7974272



4893904



12751297

# Rectangle

The Rectangle color scheme consists of four colors that form a rectangle on the color wheel.



13538418



10855529



4893904



9608920



# Sweetspot

The Sweet Spot groups the original color and five complimentary colors.



13538418



16771806



13529772



8418155



0



8421504



# Same Dimension

The Same Dimension uses a secret algorithm to generate beautiful new colors.



13538418



16754805



13550194



6709340



10894592



2493952

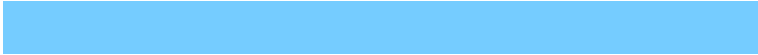


# Inverse Universe

The Inverse Universe completely reimagines the original color for something new.



7515342



7720191



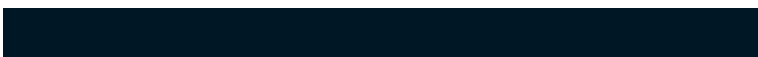
7503566



6054502



26790



6182



# Previews

## White Background



This preview shows how the Decimal color 13538418 looks on a white background.

## Color Contrast Check

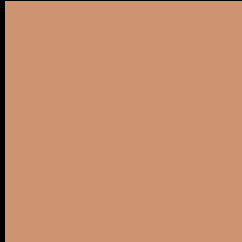
Large Text (above 18pt) WCAG AA × Fail

Any Text WCAG AA × Fail

Large Text (above 18pt) WCAG AAA × Fail

Any Text WCAG AAA × Fail

# Black Background



This preview shows how the Decimal color 13538418 looks on a black background.

## Color Contrast Check

Large Text (above 18pt) WCAG AA ✓ Pass

Any Text WCAG AA ✓ Pass

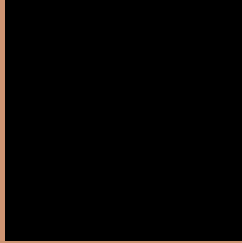
Large Text (above 18pt) WCAG AAA ✓ Pass

Any Text WCAG AAA ✓ Pass

If you want to check with other color combinations, try the [Color Contrast Checker](#).



## Decimal 13538418 Background



This preview shows how black text looks on a background with the Decimal color 13538418.




This preview shows how white text looks on a background with the Decimal color 13538418.

# Color Blindness Simulation

Color vision deficiency is a very complex topic, and I could not describe the different causes any better than Wikipedia does, so if you want to learn more, you should check out their [article about color blindness](#).

## Dichromacy





**Tritanopia**  
13799322

# Trichromacy



**Original Color**  
13538418

**Protanomaly**  
12164214

**Deuteranomaly**  
12949617

**Tritanomaly**  
13734283

# Monochromacy



**Original Color**  
13538418

**Achromatopsia**  
10592673

**Achromatomaly**  
11639952

# CSS Examples

## Text

The CSS property to change the color of the text to Decimal 13538418 is called "color". The color property can be set on classes, ids or directly on the HTML element.

This example shows how text in the color #CE9472 looks like.

```
.text, #text, p{  
  color:#CE9472  
}
```

If you want to add a text shadow in that color use the text-shadow property, you can generate a text shadow directly with our [CSS Text Shadow Generator](#).

Here you see how black text with a 4 pixel #CE9472 colored shadow looks like.

```
.shadow{ text-shadow: 4px 4px 2px #CE9472
}
```

## Border

The CSS property to change the border of an element to Decimal 13538418 is called "border". The border property can be set on classes, ids or directly on the HTML element.

This example shows the color as border, it can be applied via the CSS property "border" or "border-color".

```
.border, #border, table{ border:4px solid
#CE9472 }
```

If only the border color should be changed use the property `border-color`.

```
.border{ border-color:#CE9472 }
```

If you want to add a box shadow in that color use:

Here you see how a box with a 4 pixel #CE9472 colored shadow looks like.

```
.boxshadow{ -moz-box-shadow:4px 4px 4px  
4px #CE9472; -webkit-box-shadow:4px 4px  
4px 4px #CE9472; box-shadow:4px 4px 4px  
4px #CE9472 }
```

# Background

The CSS property to change the background color of an element to Decimal 13538418 is called "background". The background property can be set on classes, ids or directly on the HTML element.

```
.background, #background, body{  
background:#CE9472 }
```

If only the background color should be changed can be used:

```
.background{ background-color:#CE9472 }
```

This example shows the color as background, it is applied via the CSS property "background".

To optimize and compress your CSS code, you can use our [online CSS compressor and optimizer](#) based on csstidy. If you want to create a linear or radial gradient as background or border, check our [CSS Gradient Generator](#).



Hey! You found this booklet interesting? Support Converting Colors with the new Membership Option!

The pro membership hides all ads, plus gives you double the colors in the color bucket, and more awesome pro features!

**[Learn more, Memberships starting at \\$2.50/m!](#)**

**Follow me  
on Twitter!**

@ConvertingColor