

# Converting Colors

Decimal(13538420)

Have a look what the booklet for  
Decimal(13538420) contains.

<b>Decimal(13538420)</b> .....	3
<i><b>Conversions</b></i> .....	4
<i><b>Details</b></i> .....	6
<i><b>Harmonies</b></i> .....	11
<i><b>Previews</b></i> .....	23
<i><b>Color Blindness Simulation</b></i> .....	26
<i><b>CSS Examples</b></i> .....	29

# **Color**

**Decimal(13538420)**

# Conversions

## Conversions Part 1

Format	Color
Hex	CE9474
RGB	206, 148, 116
RGB Percent	81%, 58%, 45%
CMY	0.1922, 0.4196, 0.5451
CMYK	0.00, 0.28, 0.44, 0.19
HSL	21°, 48%, 63%
HSV	21°, 44%, 81%
XYZ	39.1959, 35.5626, 21.3214
YIQ	161.6940, 44.8400, 2.3440

# Conversions

## Conversions Part 2

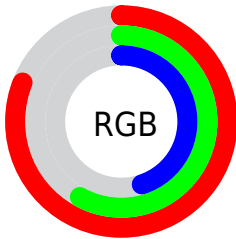
Format	Color
R <sub>Y</sub> B	206, 166, 116
Decimal	13538420
CIE Lab	66.18, 17.92, 25.56
CIE LCh	66, 31.216, 54.957
Yxy	35.5626, 0.4080, 0.3701
Android (android.graphics.Color)	4291728500 (0xFFCE9474)
YUV	161.6940, -22.5271, 38.8564
Hunter-Lab	59.6344, 12.9626, 20.5458

# Details

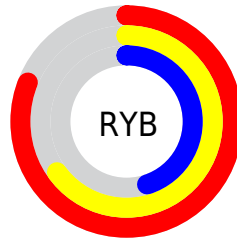
The Decimal color **13538420** is a light color, and the websafe version is hex **CC9966**. A complement of this color would be **7646926**, and the grayscale version is **10658466**.

A 20% lighter version of the original color is **16763560**, and **9789763** is the 20% darker color. If you saturate the color by 10%, you get **13535071**, and if you desaturate by 10%, it is **13541769**.

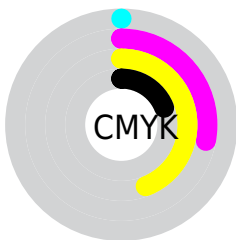
# Distribution



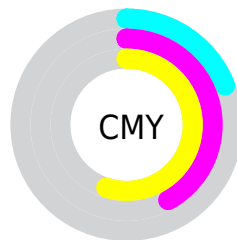
- Red (81%)
- Green (58%)
- Blue (45%)



- Red (81%)
- Yellow (65%)
- Blue (45%)



- Cyan (0%)
- Magenta (28%)
- Yellow (44%)
- Black (19%)



- Cyan (19%)
- Magenta (42%)
- Yellow (55%)

# Brightness & Saturation Gradients

These gradients show how the Decimal color 13538420 changes by changing the brightness by 10 percent. The first figure shows a shift by +10% for each color and the second figure -10%.

Similar to the brightness gradients but the following saturation gradients show a change of the Decimal color 13538420 by changing the saturation by 10% instead.



 13538420

 13538420

16777215

 11631195

 16763560

 9789763

 16770756

 8014125

 16777184

 6238743

 16777212

 4594688

 2885376

 262144

 0

 13538420

 13538420

 13535071

 13541769

 13531467

 13545373

 13528118

 13548722

 13524770

 13552070

 13521421

 13555419

 13519104

 13559024

 13562367

 13565695

 13565951

# Harmonies

## Analogous

The Analogous color harmony consists of three colors that are next to each other on the color wheel.



14192011



13538420



12164713

# Triad

The Triadic color harmony groups three colors that are evenly spaced from another and form a triangle on the color wheel.



13538420



5943451



10394580

# Complementary

The Complementary color scheme is a pair of colors which are on the opposite of each other on the color wheel.



13538420



7646926

# Split Complementary

Split-complementary colors differ from the complementary color scheme. The scheme consists of three colors, the original color and two neighbors of the complement color.



7644632



13538420



4370616

# Square

The Square scheme is like the rectangle color scheme, but the four colors are evenly spaced on the color wheel.



13538420



8105344



5024974



12620481

# Rectangle

The Rectangle color scheme consists of four colors that form a rectangle on the color wheel.



13538420



10921066



5024974



9478103

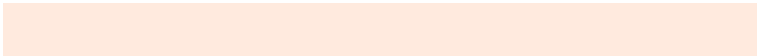


# Sweetspot

The Sweet Spot groups the original color and five complimentary colors.



13538420



16771806



13530286



8417899



0



8421504



# Same Dimension

The Same Dimension uses a secret algorithm to generate beautiful new colors.



13538420



16755322



13549940



6709084



10894080



2493952

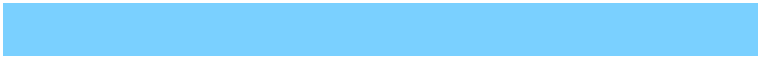


# Inverse Universe

The Inverse Universe completely reimagines the original color for something new.



7646926



8048895



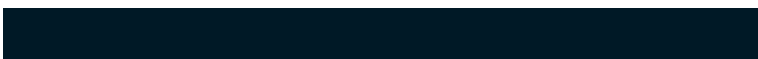
7635406



6054502



27558



6438



# Previews

## White Background



This preview shows how the Decimal color 13538420 looks on a white background.

## Color Contrast Check

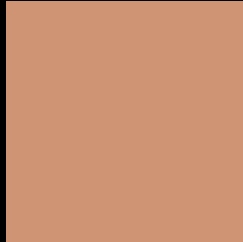
Large Text (above 18pt) WCAG AA × Fail

Any Text WCAG AA × Fail

Large Text (above 18pt) WCAG AAA × Fail

Any Text WCAG AAA × Fail

# Black Background



This preview shows how the Decimal color 13538420 looks on a black background.

## Color Contrast Check

Large Text (above 18pt) WCAG AA ✓ Pass

Any Text WCAG AA ✓ Pass

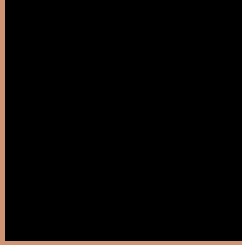
Large Text (above 18pt) WCAG AAA ✓ Pass

Any Text WCAG AAA ✓ Pass

If you want to check with other color combinations, try the [Color Contrast Checker](#).



## Decimal 13538420 Background



This preview shows how black text looks on a background with the Decimal color 13538420.



This preview shows how white text looks on a background with the Decimal color 13538420.

# Color Blindness Simulation

Color vision deficiency is a very complex topic, and I could not describe the different causes any better than Wikipedia does, so if you want to learn more, you should check out their [article about color blindness](#).

## Dichromacy



**Original Color**  
13538420

**Protanopia**  
11379066

**Deuteranopia**  
12622451



**Tritanopia**  
13733786

# Trichromacy



**Original Color**  
13538420

**Protanomaly**  
12164216

**Deuteranomaly**  
12949619

**Tritanomaly**  
13668748

# Monochromacy



**Original Color**  
13538420

**Achromatopsia**  
10658466

**Achromatomaly**  
11705745

# CSS Examples

## Text

The CSS property to change the color of the text to Decimal 13538420 is called "color". The color property can be set on classes, ids or directly on the HTML element.

This example shows how text in the color #CE9474 looks like.

```
.text, #text, p{  
    color:#CE9474  
}
```

If you want to add a text shadow in that color use the text-shadow property, you can generate a text shadow directly with our [CSS Text Shadow Generator](#).

Here you see how black text with a 4 pixel #CE9474 colored shadow looks like.

```
.shadow{ text-shadow: 4px 4px 2px #CE9474
}
```

## Border

The CSS property to change the border of an element to Decimal 13538420 is called "border". The border property can be set on classes, ids or directly on the HTML element.

This example shows the color as border, it can be applied via the CSS property "border" or "border-color".

```
.border, #border, table{ border:4px solid
#CE9474 }
```

If only the border color should be changed use the property `border-color`.

```
.border{ border-color:#CE9474 }
```

If you want to add a box shadow in that color use:

Here you see how a box with a 4 pixel #CE9474 colored shadow looks like.

```
.boxshadow{ -moz-box-shadow:4px 4px 4px  
4px #CE9474; -webkit-box-shadow:4px 4px  
4px 4px #CE9474; box-shadow:4px 4px 4px  
4px #CE9474 }
```

# Background

The CSS property to change the background color of an element to Decimal 13538420 is called "background". The background property can be set on classes, ids or directly on the HTML element.

```
.background, #background, body{  
background:#CE9474 }
```

If only the background color should be changed can be used:

```
.background{ background-color:#CE9474 }
```

This example shows the color as background, it is applied via the CSS property "background".

To optimize and compress your CSS code, you can use our [online CSS compressor and optimizer](#) based on csstidy. If you want to create a linear or radial gradient as background or border, check our [CSS Gradient Generator](#).



Hey! You found this booklet interesting? Support Converting Colors with the new Membership Option!

The pro membership hides all ads, plus gives you double the colors in the color bucket, and more awesome pro features!

**[Learn more, Memberships starting at \\$2.50/m!](#)**

**Follow me  
on Twitter!**

@ConvertingColor