

Converting Colors

Decimal(13539972)

Have a look what the booklet for
Decimal(13539972) contains.

Decimal(13539972)	3
<i>Conversions</i>	4
<i>Details</i>	6
<i>Harmonies</i>	11
<i>Previews</i>	23
<i>Color Blindness Simulation</i>	26
<i>CSS Examples</i>	29

Color

Decimal(13539972)

Conversions

Conversions Part 1

Format	Color
Hex	CE9A84
RGB	206, 154, 132
RGB Percent	81%, 60%, 52%
CMY	0.1922, 0.3961, 0.4824
CMYK	0.00, 0.25, 0.36, 0.19
HSL	18°, 43%, 66%
HSV	18°, 36%, 81%
XYZ	41.1741, 37.8990, 26.9749
YIQ	167.0400, 38.0540, 4.1820

Conversions

Conversions Part 2

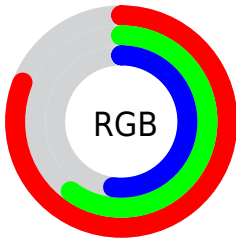
Format	Color
R _Y B	206, 163, 132
Decimal	13539972
CIE Lab	67.95, 16.49, 19.12
CIE LCh	68, 25.250, 49.231
Yxy	37.8990, 0.3883, 0.3574
Android (android.graphics.Color)	4291730052 (0xFFCE9A84)
YUV	167.0400, -17.2747, 34.1679
Hunter-Lab	61.5621, 11.6509, 17.1142

Details

The Decimal color **13539972** is a light color, and the websafe version is hex **CC9999**. A complement of this color would be **8698062**, and the grayscale version is **10987431**.

A 20% lighter version of the original color is **16765369**, and **9856850** is the 20% darker color. If you saturate the color by 10%, you get **13536367**, and if you desaturate by 10%, it is **13543577**.

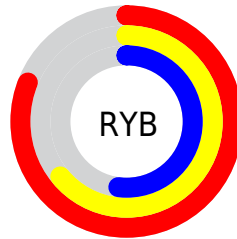
Distribution



Red (81%)

Green (60%)

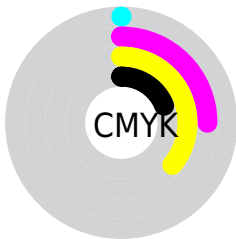
Blue (52%)



Red (81%)

Yellow (64%)

Blue (52%)

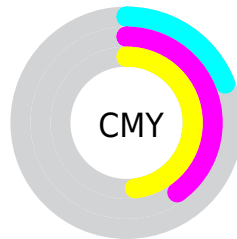


Cyan (0%)

Magenta (25%)

Yellow (36%)

Black (19%)



Cyan (19%)

Magenta (40%)

Yellow (48%)

Brightness & Saturation Gradients

These gradients show how the Decimal color 13539972 changes by changing the brightness by 10 percent. The first figure shows a shift by +10% for each color and the second figure -10%.

Similar to the brightness gradients but the following saturation gradients show a change of the Decimal color 13539972 by changing the saturation by 10% instead.

 13539972

 13539972

16777215

 11698283

 16765369

 9856850

 16772565

 8081211

 16777201

 6371109

 4661521

 3083520

 1179648

 0

 13539972

 13539972

 13536367

 13543577

 13532507

 13547437

 13528902

 13551042

 13525042

 13554902

 13521437

 13558507

 13517576

 13562367

 13516032

 13565951

Harmonies

Analogous

The Analogous color harmony consists of three colors that are next to each other on the color wheel.



13931928



13539972



12493177

Triad

The Triadic color harmony groups three colors that are evenly spaced from another and form a triangle on the color wheel.



13539972



7647900



10396624

Complementary

The Complementary color scheme is a pair of colors which are on the opposite of each other on the color wheel.



13539972



8698062

Split Complementary

Split-complementary colors differ from the complementary color scheme. The scheme consists of three colors, the original color and two neighbors of the complement color.



8301266



13539972



6533812

Square

The Square scheme is like the rectangle color scheme, but the four colors are evenly spaced on the color wheel.



13539972



9285511



6729927



12295108

Rectangle

The Rectangle color scheme consists of four colors that form a rectangle on the color wheel.



13539972



11511417



6729927



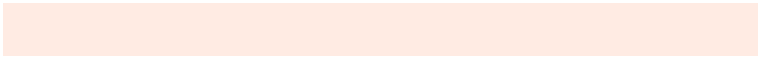
9676242

Sweetspot

The Sweet Spot groups the original color and five complimentary colors.



13539972



16772067



13534393



8418415



0



8421504

Same Dimension

The Same Dimension uses a secret algorithm to generate beautiful new colors.



13539972



16757393



13549188



6709084



10891520



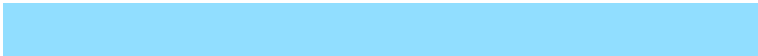
2493184

Inverse Universe

The Inverse Universe completely reimagines the original color for something new.



8698062



9559807



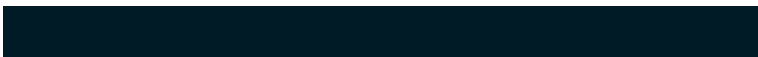
8688846



6054758



29862



6950

Previews

White Background



This preview shows how the Decimal color 13539972 looks on a white background.

Color Contrast Check

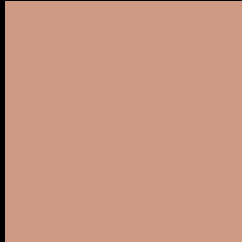
Large Text (above 18pt) WCAG AA × Fail

Any Text WCAG AA × Fail

Large Text (above 18pt) WCAG AAA × Fail

Any Text WCAG AAA × Fail

Black Background



This preview shows how the Decimal color 13539972 looks on a black background.

Color Contrast Check

Large Text (above 18pt) WCAG AA ✓ Pass

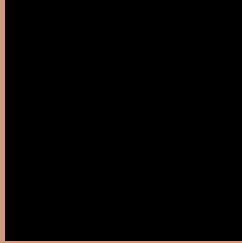
Any Text WCAG AA ✓ Pass

Large Text (above 18pt) WCAG AAA ✓ Pass

Any Text WCAG AAA ✓ Pass

If you want to check with other color combinations, try the [Color Contrast Checker](#).

Decimal 13539972 Background



This preview shows how black text looks on a background with the Decimal color 13539972.



This preview shows how white text looks on a background with the Decimal color 13539972.

Color Blindness Simulation

Color vision deficiency is a very complex topic, and I could not describe the different causes any better than Wikipedia does, so if you want to learn more, you should check out their [article about color blindness](#).

Dichromacy



Original Color
13539972

Protanopia
11511433

Deuteranopia
12754819



Tritanopia
13735585

Trichromacy



Original Color
13539972

Protanomaly
12231303

Deuteranomaly
13016451

Tritanomaly
13670294

Monochromacy



Original Color
13539972

Achromatopsia
10987431

Achromatomaly
11903642

CSS Examples

Text

The CSS property to change the color of the text to Decimal 13539972 is called "color". The color property can be set on classes, ids or directly on the HTML element.

This example shows how text in the color #CE9A84 looks like.

```
.text, #text, p{  
    color:#CE9A84  
}
```

If you want to add a text shadow in that color use the text-shadow property, you can generate a text shadow directly with our [CSS Text Shadow Generator](#).

Here you see how black text with a 4 pixel #CE9A84 colored shadow looks like.

```
.shadow{ text-shadow: 4px 4px 2px #CE9A84
}
```

Border

The CSS property to change the border of an element to Decimal 13539972 is called "border". The border property can be set on classes, ids or directly on the HTML element.

This example shows the color as border, it can be applied via the CSS property "border" or "border-color".

```
.border, #border, table{ border:4px solid
#CE9A84 }
```

If only the border color should be changed use the property `border-color`.

```
.border{ border-color:#CE9A84 }
```

If you want to add a box shadow in that color use:

Here you see how a box with a 4 pixel #CE9A84 colored shadow looks like.

```
.boxshadow{ -moz-box-shadow:4px 4px 4px  
4px #CE9A84; -webkit-box-shadow:4px 4px  
4px 4px #CE9A84; box-shadow:4px 4px 4px  
4px #CE9A84 }
```

Background

The CSS property to change the background color of an element to Decimal 13539972 is called "background". The background property can be set on classes, ids or directly on the HTML element.

```
.background, #background, body{  
background:#CE9A84 }
```

If only the background color should be changed can be used:

```
.background{ background-color:#CE9A84 }
```

This example shows the color as background, it is applied via the CSS property "background".

To optimize and compress your CSS code, you can use our [online CSS compressor and optimizer](#) based on csstidy. If you want to create a linear or radial gradient as background or border, check our [CSS Gradient Generator](#).

Hey! You found this booklet interesting? Support Converting Colors with the new Membership Option!

The pro membership hides all ads, plus gives you double the colors in the color bucket, and more awesome pro features!

[Learn more, Memberships starting at \\$2.50/m!](#)

**Follow me
on Twitter!**

@ConvertingColor