

Converting Colors

Decimal(13540530)

Have a look what the booklet for
Decimal(13540530) contains.

Decimal(13540530)	3
<i>Conversions</i>	4
<i>Details</i>	6
<i>Harmonies</i>	11
<i>Previews</i>	23
<i>Color Blindness Simulation</i>	26
<i>CSS Examples</i>	29

Color

Decimal(13540530)

Conversions

Conversions Part 1

Format	Color
Hex	CE9CB2
RGB	206, 156, 178
RGB Percent	81%, 61%, 70%
CMY	0.1922, 0.3882, 0.3020
CMYK	0.00, 0.24, 0.14, 0.19
HSL	334°, 34%, 71%
HSV	334°, 24%, 81%
XYZ	45.3779, 40.1131, 47.4704
YIQ	173.4580, 22.7380, 17.4420

Conversions

Conversions Part 2

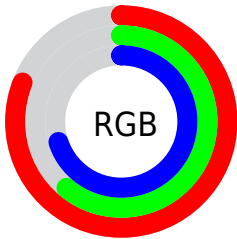
Format	Color
R _Y B	206, 156, 178
Decimal	13540530
CIE Lab	69.55, 22.04, -4.15
CIE LCh	70, 22.424, 349.327
Yxy	40.1131, 0.3413, 0.3017
Android (android.graphics.Color)	4291730610 (0xFFCE9CB2)
YUV	173.4580, 2.2392, 28.5393
Hunter-Lab	63.3349, 17.0549, -0.1043

Details

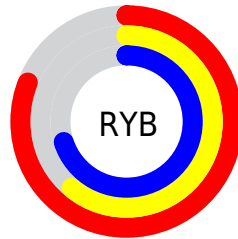
The Decimal color **13540530** is a light color, and the websafe version is hex **CC9999**. A complement of this color would be **10276536**, and the grayscale version is **11382189**.

A 20% lighter version of the original color is **16765930**, and **9922685** is the 20% darker color. If you saturate the color by 10%, you get **13535142**, and if you desaturate by 10%, it is **13545918**.

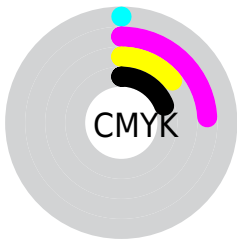
Distribution



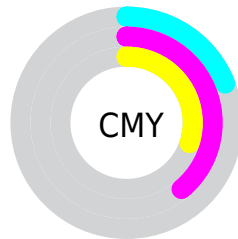
- Red (81%)
- Green (61%)
- Blue (70%)



- Red (81%)
- Yellow (61%)
- Blue (70%)



- Cyan (0%)
- Magenta (24%)
- Yellow (14%)
- Black (19%)



- Cyan (19%)
- Magenta (39%)
- Yellow (30%)

Brightness & Saturation Gradients

These gradients show how the Decimal color 13540530 changes by changing the brightness by 10 percent. The first figure shows a shift by +10% for each color and the second figure -10%.

Similar to the brightness gradients but the following saturation gradients show a change of the Decimal color 13540530 by changing the saturation by 10% instead.

 13540530

 13540530

16777215

 11698839

 16765930

 9922685

 16773119

 8212580

 6502477

 4858422

 3345441

 2097161

 0

 13540530

 13540530

 13535142

 13545918

 13530011

 13551049

 13524623

 13556437

 13519492

 13561568

 13514104

 13565932

 13508717

 13565943

 13503585

 13565951

 13500507

Harmonies

Analogous

The Analogous color harmony consists of three colors that are next to each other on the color wheel.



12427461



13540530



13933725

Triad

The Triadic color harmony groups three colors that are evenly spaced from another and form a triangle on the color wheel.



13540530



11251075



7648200

Complementary

The Complementary color scheme is a pair of colors which are on the opposite of each other on the color wheel.



13540530



10276536

Split Complementary

Split-complementary colors differ from the complementary color scheme. The scheme consists of three colors, the original color and two neighbors of the complement color.



7452087



13540530



9745039

Square

The Square scheme is like the rectangle color scheme, but the four colors are evenly spaced on the color wheel.



13540530



12625538



8369570



8957649

Rectangle

The Rectangle color scheme consists of four colors that form a rectangle on the color wheel.



13540530



13737617



8369570



7451843

Sweetspot

The Sweet Spot groups the original color and five complimentary colors.



13540530



16772597



12098766



8418682



0



8421504

Same Dimension

The Same Dimension uses a secret algorithm to generate beautiful new colors.



13540530



16758230



13541276



6708320



10879049



2490385

Inverse Universe

The Inverse Universe completely reimagines the original color for something new.



13540530



16758230



10276046



6708320



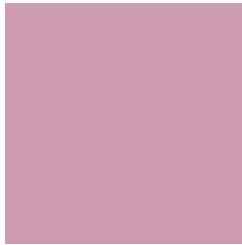
10879049



2490385

Previews

White Background



This preview shows how the Decimal color 13540530 looks on a white background.

Color Contrast Check

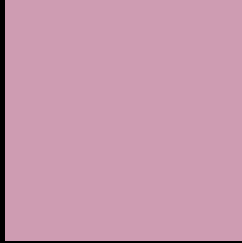
Large Text (above 18pt) WCAG AA × Fail

Any Text WCAG AA × Fail

Large Text (above 18pt) WCAG AAA × Fail

Any Text WCAG AAA × Fail

Black Background



This preview shows how the Decimal color 13540530 looks on a black background.

Color Contrast Check

Large Text (above 18pt) WCAG AA ✓ Pass

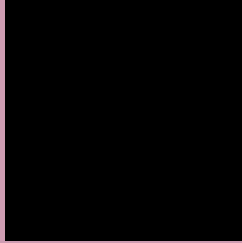
Any Text WCAG AA ✓ Pass

Large Text (above 18pt) WCAG AAA ✓ Pass

Any Text WCAG AAA ✓ Pass

If you want to check with other color combinations, try the [Color Contrast Checker](#).

Decimal 13540530 Background



This preview shows how black text looks on a background with the Decimal color 13540530.



This preview shows how white text looks on a background with the Decimal color 13540530.

Color Blindness Simulation

Color vision deficiency is a very complex topic, and I could not describe the different causes any better than Wikipedia does, so if you want to learn more, you should check out their [article about color blindness](#).

Dichromacy



Original Color
13540530

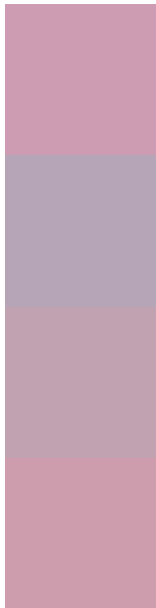
Protanopia
11119034

Deuteranopia
12101040



Tritanopia
13475242

Trichromacy



Original Color
13540530

Protanomaly
11969719

Deuteranomaly
12624561

Tritanomaly
13475245

Monochromacy



Original Color
13540530

Achromatopsia
11382189

Achromatomaly
12167087

CSS Examples

Text

The CSS property to change the color of the text to Decimal 13540530 is called "color". The color property can be set on classes, ids or directly on the HTML element.

This example shows how text in the color #CE9CB2 looks like.

```
.text, #text, p{  
  color:#CE9CB2  
}
```

If you want to add a text shadow in that color use the text-shadow property, you can generate a text shadow directly with our [CSS Text Shadow Generator](#).

Here you see how black text with a 4 pixel #CE9CB2 colored shadow looks like.

```
.shadow{ text-shadow: 4px 4px 2px #CE9CB2
}
```

Border

The CSS property to change the border of an element to Decimal 13540530 is called "border". The border property can be set on classes, ids or directly on the HTML element.

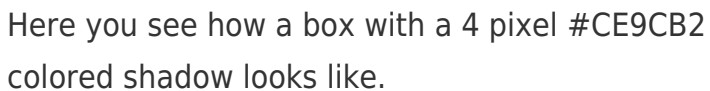
This example shows the color as border, it can be applied via the CSS property "border" or "border-color".

```
.border, #border, table{ border:4px solid
#CE9CB2 }
```

If only the border color should be changed use the property `border-color`.

```
.border{ border-color:#CE9CB2 }
```

If you want to add a box shadow in that color use:



Here you see how a box with a 4 pixel #CE9CB2 colored shadow looks like.

```
.boxshadow{ -moz-box-shadow:4px 4px 4px  
4px #CE9CB2; -webkit-box-shadow:4px 4px  
4px 4px #CE9CB2; box-shadow:4px 4px 4px  
4px #CE9CB2 }
```

Background

The CSS property to change the background color of an element to Decimal 13540530 is called "background". The background property can be set on classes, ids or directly on the HTML element.

```
.background, #background, body{  
background:#CE9CB2 }
```

If only the background color should be changed can be used:

```
.background{ background-color:#CE9CB2 }
```

This example shows the color as background, it is applied via the CSS property "background".

To optimize and compress your CSS code, you can use our [online CSS compressor and optimizer](#) based on csstidy. If you want to create a linear or radial gradient as background or border, check our [CSS Gradient Generator](#).

Hey! You found this booklet interesting? Support Converting Colors with the new Membership Option!

The pro membership hides all ads, plus gives you double the colors in the color bucket, and more awesome pro features!

[Learn more, Memberships starting at \\$2.50/m!](#)

**Follow me
on Twitter!**

@ConvertingColor