

# Converting Colors

Decimal(13540749)

Have a look what the booklet for  
Decimal(13540749) contains.

<b>Decimal(13540749)</b> .....	3
<i><b>Conversions</b></i> .....	4
<i><b>Details</b></i> .....	6
<i><b>Harmonies</b></i> .....	11
<i><b>Previews</b></i> .....	23
<i><b>Color Blindness Simulation</b></i> .....	26
<i><b>CSS Examples</b></i> .....	29

# **Color**

**Decimal(13540749)**

# Conversions

## Conversions Part 1

Format	Color
Hex	CE9D8D
RGB	206, 157, 141
RGB Percent	81%, 62%, 55%
CMY	0.1922, 0.3843, 0.4471
CMYK	0.00, 0.24, 0.32, 0.19
HSL	15°, 40%, 68%
HSV	15°, 32%, 81%
XYZ	42.3183, 39.1588, 30.5273
YIQ	169.8270, 34.3400, 5.4120

# Conversions

## Conversions Part 2

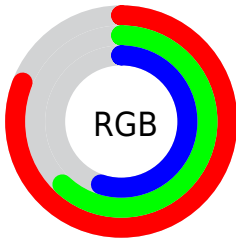
<b>Format</b>	<b>Color</b>
<b>R<sub>YB</sub></b>	206, 162, 141
Decimal	13540749
CIE Lab	68.87, 16.00, 15.42
CIE LCh	69, 22.218, 43.953
Yxy	39.1588, 0.3778, 0.3496
Android (android.graphics.Color)	4291730829 (0xFFCE9D8D)
YUV	169.8270, -14.2117, 31.7237
Hunter-Lab	62.5770, 11.2025, 14.8801

# Details

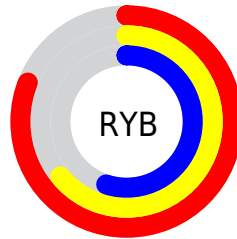
The Decimal color **13540749** is a light color, and the websafe version is hex **CC9999**. A complement of this color would be **9289422**, and the grayscale version is **11184810**.

A 20% lighter version of the original color is **16766147**, and **9857627** is the 20% darker color. If you saturate the color by 10%, you get **13536632**, and if you desaturate by 10%, it is **13544866**.

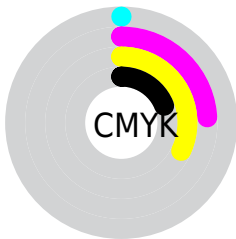
# Distribution



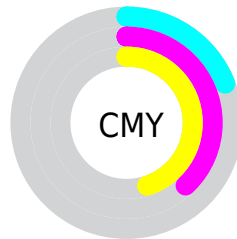
- Red (81%)
- Green (62%)
- Blue (55%)



- Red (81%)
- Yellow (64%)
- Blue (55%)



- Cyan (0%)
- Magenta (24%)
- Yellow (32%)
- Black (19%)



- Cyan (19%)
- Magenta (38%)
- Yellow (45%)

# Brightness & Saturation Gradients

These gradients show how the Decimal color 13540749 changes by changing the brightness by 10 percent. The first figure shows a shift by +10% for each color and the second figure -10%.

Similar to the brightness gradients but the following saturation gradients show a change of the Decimal color 13540749 by changing the saturation by 10% instead.



 13540749

 13540749

16777215

 11699059

 16766147

 9857627

 16773343

 8147267

 16777211

 6437421

 4727832

 3215104

 1507328

 0

 13540749

 13540749

 13536632

 13544866

 13532772

 13548726

 13528655

 13552843

 13524795

 13556703

 13520678

 13560820

 13516817

 13564671

 13513472

 13565951

# Harmonies

## Analogous

The Analogous color harmony consists of three colors that are next to each other on the color wheel.



13736607



13540749



12690306

# Triad

The Triadic color harmony groups three colors that are evenly spaced from another and form a triangle on the color wheel.



13540749



8500124



10332111

# Complementary

The Complementary color scheme is a pair of colors which are on the opposite of each other on the color wheel.



13540749



9289422

# Split Complementary

Split-complementary colors differ from the complementary color scheme. The scheme consists of three colors, the original color and two neighbors of the complement color.



8564174



13540749



7451825

# Square

The Square scheme is like the rectangle color scheme, but the four colors are evenly spaced on the color wheel.



13540749



9940875



7451331



12034245

# Rectangle

The Rectangle color scheme consists of four colors that form a rectangle on the color wheel.



13540749



11839616



7451331



9742800

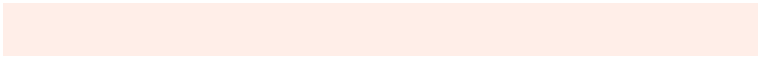


# Sweetspot

The Sweet Spot groups the original color and five complimentary colors.



13540749



16772840



13536703



8418673



0



8421504



# Same Dimension

The Same Dimension uses a secret algorithm to generate beautiful new colors.



13540749



16758430



13548941



6708828



10889472



2492672

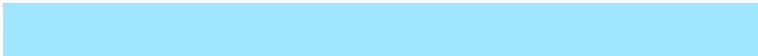


# Inverse Universe

The Inverse Universe completely reimagines the original color for something new.



9289422



10414079



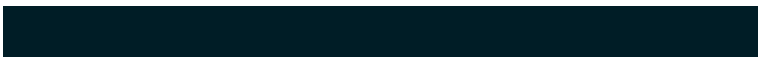
9281230



6054758



32166



7462



# Previews

## White Background



This preview shows how the Decimal color 13540749 looks on a white background.

## Color Contrast Check

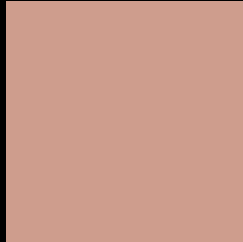
Large Text (above 18pt) WCAG AA × Fail

Any Text WCAG AA × Fail

Large Text (above 18pt) WCAG AAA × Fail

Any Text WCAG AAA × Fail

# Black Background



This preview shows how the Decimal color 13540749 looks on a black background.

## Color Contrast Check

Large Text (above 18pt) WCAG AA ✓ Pass

Any Text WCAG AA ✓ Pass

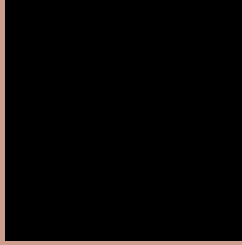
Large Text (above 18pt) WCAG AAA ✓ Pass

Any Text WCAG AAA ✓ Pass

If you want to check with other color combinations, try the [Color Contrast Checker](#).



## Decimal 13540749 Background



This preview shows how black text looks on a background with the Decimal color 13540749.

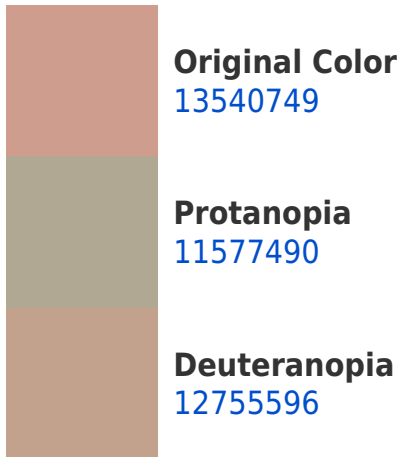


This preview shows how white text looks on a background with the Decimal color 13540749.

# Color Blindness Simulation

Color vision deficiency is a very complex topic, and I could not describe the different causes any better than Wikipedia does, so if you want to learn more, you should check out their [article about color blindness](#).

## Dichromacy





**Tritanopia**  
13736357

# Trichromacy



**Original Color**  
13540749

**Protanomaly**  
12297360

**Deuteranomaly**  
13017228

**Tritanomaly**  
13671068

# Monochromacy



**Original Color**  
13540749

**Achromatopsia**  
11184810

**Achromatomaly**  
12035487

# CSS Examples

## Text

The CSS property to change the color of the text to Decimal 13540749 is called "color". The color property can be set on classes, ids or directly on the HTML element.

This example shows how text in the color #CE9D8D looks like.

```
.text, #text, p{  
  color:#CE9D8D  
}
```

If you want to add a text shadow in that color use the text-shadow property, you can generate a text shadow directly with our [CSS Text Shadow Generator](#).

Here you see how black text with a 4 pixel #CE9D8D colored shadow looks like.

```
.shadow{ text-shadow: 4px 4px 2px #CE9D8D
}
```

## Border

The CSS property to change the border of an element to Decimal 13540749 is called "border". The border property can be set on classes, ids or directly on the HTML element.

This example shows the color as border, it can be applied via the CSS property "border" or "border-color".

```
.border, #border, table{ border:4px solid
#CE9D8D }
```

If only the border color should be changed use the property `border-color`.

```
.border{ border-color:#CE9D8D }
```

If you want to add a box shadow in that color use:

Here you see how a box with a 4 pixel #CE9D8D colored shadow looks like.

```
.boxshadow{ -moz-box-shadow:4px 4px 4px  
4px #CE9D8D; -webkit-box-shadow:4px 4px  
4px 4px #CE9D8D; box-shadow:4px 4px 4px  
4px #CE9D8D }
```

# Background

The CSS property to change the background color of an element to Decimal 13540749 is called "background". The background property can be set on classes, ids or directly on the HTML element.

```
.background, #background, body{  
background:#CE9D8D }
```

If only the background color should be changed can be used:

```
.background{ background-color:#CE9D8D }
```

This example shows the color as background, it is applied via the CSS property "background".

To optimize and compress your CSS code, you can use our [online CSS compressor and optimizer](#) based on csstidy. If you want to create a linear or radial gradient as background or border, check our [CSS Gradient Generator](#).



Hey! You found this booklet interesting? Support Converting Colors with the new Membership Option!

The pro membership hides all ads, plus gives you double the colors in the color bucket, and more awesome pro features!

**[Learn more, Memberships starting at \\$2.50/m!](#)**

**Follow me  
on Twitter!**

@ConvertingColor