

Converting Colors

Decimal(13542802)

Have a look what the booklet for
Decimal(13542802) contains.

Decimal(13542802)	3
<i>Conversions</i>	4
<i>Details</i>	6
<i>Harmonies</i>	11
<i>Previews</i>	23
<i>Color Blindness Simulation</i>	26
<i>CSS Examples</i>	29

Color

Decimal(13542802)

Conversions

Conversions Part 1

Format	Color
Hex	CEA592
RGB	206, 165, 146
RGB Percent	81%, 65%, 57%
CMY	0.1922, 0.3529, 0.4275
CMYK	0.00, 0.20, 0.29, 0.19
HSL	19°, 38%, 69%
HSV	19°, 29%, 81%
XYZ	44.0970, 42.1074, 32.9975
YIQ	175.0930, 30.5350, 2.7830

Conversions

Conversions Part 2

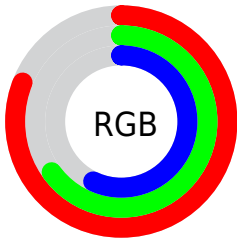
Format	Color
R _Y B	206, 174, 146
Decimal	13542802
CIE Lab	70.94, 12.31, 15.57
CIE LCh	71, 19.846, 51.659
Yxy	42.1074, 0.3699, 0.3532
Android (android.graphics.Color)	4291732882 (0xFFCEA592)
YUV	175.0930, -14.3428, 27.1054
Hunter-Lab	64.8902, 7.7443, 15.2734

Details

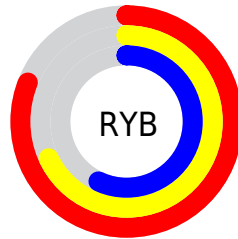
The Decimal color **13542802** is a light color, and the websafe version is hex **CC9999**. A complement of this color would be **9616334**, and the grayscale version is **11513775**.

A 20% lighter version of the original color is **16768200**, and **9924959** is the 20% darker color. If you saturate the color by 10%, you get **13539197**, and if you desaturate by 10%, it is **13546407**.

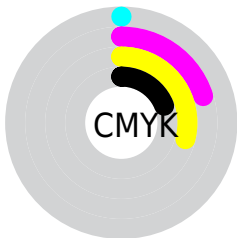
Distribution



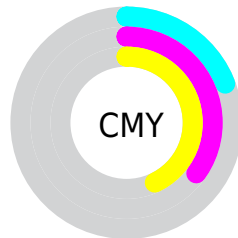
- Red (81%)
- Green (65%)
- Blue (57%)



- Red (81%)
- Yellow (68%)
- Blue (57%)



- Cyan (0%)
- Magenta (20%)
- Yellow (29%)
- Black (19%)



- Cyan (19%)
- Magenta (35%)
- Yellow (43%)

Brightness & Saturation Gradients

These gradients show how the Decimal color 13542802 changes by changing the brightness by 10 percent. The first figure shows a shift by +10% for each color and the second figure -10%.

Similar to the brightness gradients but the following saturation gradients show a change of the Decimal color 13542802 by changing the saturation by 10% instead.

 13542802

 13542802

16777215

 11701112

 16768200

 9924959

 16775652

 8149320

 6439217

 4795164

 3282435

 1835008

 0

 13542802

 13542802

 13539197

 13546407

 13535593

 13550011

 13531988

 13553616

 13528384

 13557220

 13524779

 13560825

 13521174

 13564415

 13517314

 13565951

 13517056

Harmonies

Analogous

The Analogous color harmony consists of three colors that are next to each other on the color wheel.



13869473



13542802



12626826

Triad

The Triadic color harmony groups three colors that are evenly spaced from another and form a triangle on the color wheel.



13542802



8894632



11185103

Complementary

The Complementary color scheme is a pair of colors which are on the opposite of each other on the color wheel.



13542802



9616334

Split Complementary

Split-complementary colors differ from the complementary color scheme. The scheme consists of three colors, the original color and two neighbors of the complement color.



9613777



13542802



8239290

Square

The Square scheme is like the rectangle color scheme, but the four colors are evenly spaced on the color wheel.



13542802



10073495



8500681



12625348

Rectangle

The Rectangle color scheme consists of four colors that form a rectangle on the color wheel.



13542802



11841418



8500681



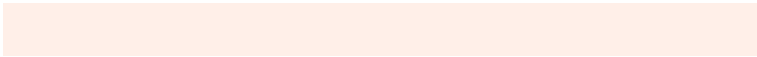
10661329

Sweetspot

The Sweet Spot groups the original color and five complimentary colors.



13542802



16773096



13537979



8418929



0



8421504

Same Dimension

The Same Dimension uses a secret algorithm to generate beautiful new colors.



13542802



16761510



13550482



6709084



10892288



2493440

Inverse Universe

The Inverse Universe completely reimagines the original color for something new.



9616334



10937343



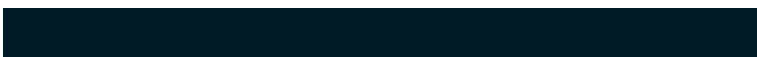
9608654



6054758



29094



6694

Previews

White Background



This preview shows how the Decimal color 13542802 looks on a white background.

Color Contrast Check

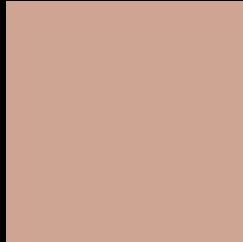
Large Text (above 18pt) WCAG AA × Fail

Any Text WCAG AA × Fail

Large Text (above 18pt) WCAG AAA × Fail

Any Text WCAG AAA × Fail

Black Background



This preview shows how the Decimal color 13542802 looks on a black background.

Color Contrast Check

Large Text (above 18pt) WCAG AA ✓ Pass

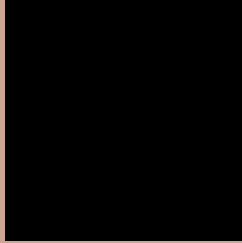
Any Text WCAG AA ✓ Pass

Large Text (above 18pt) WCAG AAA ✓ Pass

Any Text WCAG AAA ✓ Pass

If you want to check with other color combinations, try the [Color Contrast Checker](#).

Decimal 13542802 Background



This preview shows how black text looks on a background with the Decimal color 13542802.



This preview shows how white text looks on a background with the Decimal color 13542802.

Color Blindness Simulation

Color vision deficiency is a very complex topic, and I could not describe the different causes any better than Wikipedia does, so if you want to learn more, you should check out their [article about color blindness](#).

Dichromacy



Original Color
13542802

Protanopia
11971990

Deuteranopia
13215634



Tritanopia
13738413

Trichromacy



Original Color

13542802

Protanomaly

12561045

Deuteranomaly

13346450

Tritanomaly

13673123

Monochromacy



Original Color

13542802

Achromatopsia

11513775

Achromatomaly

12233636

CSS Examples

Text

The CSS property to change the color of the text to Decimal 13542802 is called "color". The color property can be set on classes, ids or directly on the HTML element.

This example shows how text in the color #CEA592 looks like.

```
.text, #text, p{  
  color:#CEA592  
}
```

If you want to add a text shadow in that color use the text-shadow property, you can generate a text shadow directly with our [CSS Text Shadow Generator](#).

Here you see how black text with a 4 pixel #CEA592 colored shadow looks like.

```
.shadow{ text-shadow: 4px 4px 2px #CEA592
}
```

Border

The CSS property to change the border of an element to Decimal 13542802 is called "border". The border property can be set on classes, ids or directly on the HTML element.

This example shows the color as border, it can be applied via the CSS property "border" or "border-color".

```
.border, #border, table{ border:4px solid
#CEA592 }
```

If only the border color should be changed use the property border-color.

```
.border{ border-color:#CEA592 }
```

If you want to add a box shadow in that color use:

Here you see how a box with a 4 pixel #CEA592 colored shadow looks like.

```
.boxshadow{ -moz-box-shadow:4px 4px 4px  
4px #CEA592; -webkit-box-shadow:4px 4px  
4px 4px #CEA592; box-shadow:4px 4px 4px  
4px #CEA592 }
```

Background

The CSS property to change the background color of an element to Decimal 13542802 is called "background". The background property can be set on classes, ids or directly on the HTML element.

```
.background, #background, body{  
background:#CEA592 }
```

If only the background color should be changed can be used:

```
.background{ background-color:#CEA592 }
```

This example shows the color as background, it is applied via the CSS property "background".

To optimize and compress your CSS code, you can use our [online CSS compressor and optimizer](#) based on csstidy. If you want to create a linear or radial gradient as background or border, check our [CSS Gradient Generator](#).

Hey! You found this booklet interesting? Support Converting Colors with the new Membership Option!

The pro membership hides all ads, plus gives you double the colors in the color bucket, and more awesome pro features!

[Learn more, Memberships starting at \\$2.50/m!](#)

**Follow me
on Twitter!**

@ConvertingColor