

Converting Colors

Decimal(13544344)

Have a look what the booklet for
Decimal(13544344) contains.

Decimal(13544344)	3
<i>Conversions</i>	4
<i>Details</i>	6
<i>Harmonies</i>	11
<i>Previews</i>	23
<i>Color Blindness Simulation</i>	26
<i>CSS Examples</i>	29

Color

Decimal(13544344)

Conversions

Conversions Part 1

Format	Color
Hex	CEAB98
RGB	206, 171, 152
RGB Percent	81%, 67%, 60%
CMY	0.1922, 0.3294, 0.4039
CMYK	0.00, 0.17, 0.26, 0.19
HSL	21°, 36%, 70%
HSV	21°, 26%, 81%
XYZ	45.6840, 44.5146, 35.8901
YIQ	179.2990, 26.9590, 1.5110

Conversions

Conversions Part 2

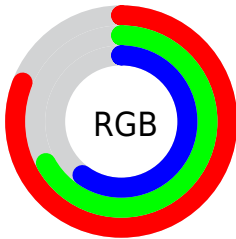
Format	Color
R _Y B	206, 181, 152
Decimal	13544344
CIE Lab	72.57, 9.89, 14.55
CIE LCh	73, 17.596, 55.800
Yxy	44.5146, 0.3623, 0.3530
Android (android.graphics.Color)	4291734424 (0xFFCEAB98)
YUV	179.2990, -13.4584, 23.4168
Hunter-Lab	66.7193, 5.4637, 14.8098

Details

The Decimal color **13544344** is a light color, and the websafe version is hex **CC9999**. A complement of this color would be **10009550**, and the grayscale version is **11776947**.

A 20% lighter version of the original color is **16769742**, and **9926501** is the 20% darker color. If you saturate the color by 10%, you get **13540995**, and if you desaturate by 10%, it is **13547693**.

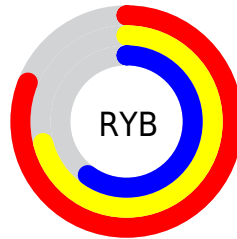
Distribution



Red (81%)

Green (67%)

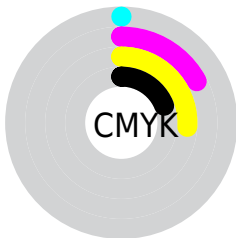
Blue (60%)



Red (81%)

Yellow (71%)

Blue (60%)

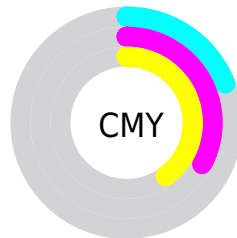


Cyan (0%)

Magenta (17%)

Yellow (26%)

Black (19%)



Cyan (19%)

Magenta (33%)

Yellow (40%)

Brightness & Saturation Gradients

These gradients show how the Decimal color 13544344 changes by changing the brightness by 10 percent. The first figure shows a shift by +10% for each color and the second figure -10%.

Similar to the brightness gradients but the following saturation gradients show a change of the Decimal color 13544344 by changing the saturation by 10% instead.

 13544344

 13544344

16777215

 11702398

 16769742

 9926501

 16777195

 8150605

 6506038

 4861985

 3349259

 1900800

 0

 13544344

 13544344

 13540995

 13547693

 13537391

 13551297

 13534042

 13554646

 13530694

 13557994

 13527089

 13561599

 13523740

 13564927

 13520392

 13565951

 13518848

Harmonies

Analogous

The Analogous color harmony consists of three colors that are next to each other on the color wheel.



13936805



13544344



12693650

Triad

The Triadic color harmony groups three colors that are evenly spaced from another and form a triangle on the color wheel.



13544344



9354159



11710415

Complementary

The Complementary color scheme is a pair of colors which are on the opposite of each other on the color wheel.



13544344



10009550

Split Complementary

Split-complementary colors differ from the complementary color scheme. The scheme consists of three colors, the original color and two neighbors of the complement color.



10335442



13544344



8895423

Square

The Square scheme is like the rectangle color scheme, but the four colors are evenly spaced on the color wheel.



13544344



10336672



9288140



12954308

Rectangle

The Rectangle color scheme consists of four colors that form a rectangle on the color wheel.



13544344



11973779



9288140



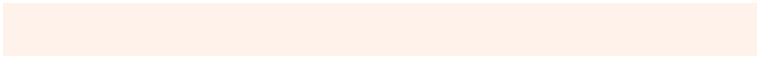
11252177

Sweetspot

The Sweet Spot groups the original color and five complimentary colors.



13544344



16773867



13539515



8419187



0



8421504

Same Dimension

The Same Dimension uses a secret algorithm to generate beautiful new colors.



13544344



16764080



13551256



6709084



10893824



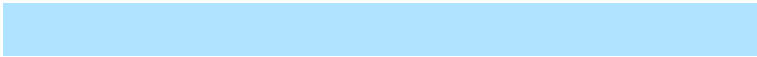
2493696

Inverse Universe

The Inverse Universe completely reimagines the original color for something new.



10009550



11592703



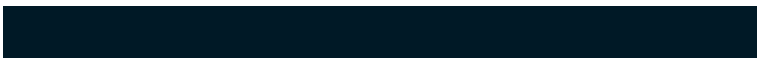
10002638



6054502



27558



6438

Previews

White Background



This preview shows how the Decimal color 13544344 looks on a white background.

Color Contrast Check

Large Text (above 18pt) WCAG AA × Fail

Any Text WCAG AA × Fail

Large Text (above 18pt) WCAG AAA × Fail

Any Text WCAG AAA × Fail

Black Background



This preview shows how the Decimal color 13544344 looks on a black background.

Color Contrast Check

Large Text (above 18pt) WCAG AA ✓ Pass

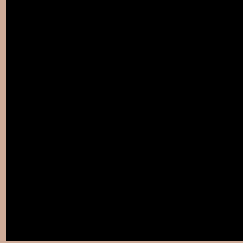
Any Text WCAG AA ✓ Pass

Large Text (above 18pt) WCAG AAA ✓ Pass

Any Text WCAG AAA ✓ Pass

If you want to check with other color combinations, try the [Color Contrast Checker](#).

Decimal 13544344 Background



This preview shows how black text looks on a background with the Decimal color 13544344.



This preview shows how white text looks on a background with the Decimal color 13544344.

Color Blindness Simulation

Color vision deficiency is a very complex topic, and I could not describe the different causes any better than Wikipedia does, so if you want to learn more, you should check out their [article about color blindness](#).

Dichromacy



Original Color
13544344

Protanopia
12300955

Deuteranopia
13478808



Tritanopia
13739956

Trichromacy



Original Color
13544344

Protanomaly
12758938

Deuteranomaly
13478808

Tritanomaly
13674666

Monochromacy



Original Color
13544344

Achromatopsia
11776947

Achromatomaly
12431529

CSS Examples

Text

The CSS property to change the color of the text to Decimal 13544344 is called "color". The color property can be set on classes, ids or directly on the HTML element.

This example shows how text in the color #CEAB98 looks like.

```
.text, #text, p{  
  color:#CEAB98  
}
```

If you want to add a text shadow in that color use the text-shadow property, you can generate a text shadow directly with our [CSS Text Shadow Generator](#).

Here you see how black text with a 4 pixel #CEAB98 colored shadow looks like.

```
.shadow{ text-shadow: 4px 4px 2px #CEAB98
}
```

Border

The CSS property to change the border of an element to Decimal 13544344 is called "border". The border property can be set on classes, ids or directly on the HTML element.

This example shows the color as border, it can be applied via the CSS property "border" or "border-color".

```
.border, #border, table{ border:4px solid
#CEAB98 }
```

If only the border color should be changed use the property `border-color`.

```
.border{ border-color:#CEAB98 }
```

If you want to add a box shadow in that color use:

Here you see how a box with a 4 pixel #CEAB98 colored shadow looks like.

```
.boxshadow{ -moz-box-shadow:4px 4px 4px  
4px #CEAB98; -webkit-box-shadow:4px 4px  
4px 4px #CEAB98; box-shadow:4px 4px 4px  
4px #CEAB98 }
```

Background

The CSS property to change the background color of an element to Decimal 13544344 is called "background". The background property can be set on classes, ids or directly on the HTML element.

```
.background, #background, body{  
background:#CEAB98 }
```

If only the background color should be changed can be used:

```
.background{ background-color:#CEAB98 }
```

This example shows the color as background, it is applied via the CSS property "background".

To optimize and compress your CSS code, you can use our [online CSS compressor and optimizer](#) based on csstidy. If you want to create a linear or radial gradient as background or border, check our [CSS Gradient Generator](#).

Hey! You found this booklet interesting? Support Converting Colors with the new Membership Option!

The pro membership hides all ads, plus gives you double the colors in the color bucket, and more awesome pro features!

[Learn more, Memberships starting at \\$2.50/m!](#)

**Follow me
on Twitter!**

@ConvertingColor