

Converting Colors

Decimal(13544364)

Have a look what the booklet for
Decimal(13544364) contains.

Decimal(13544364)	3
<i>Conversions</i>	4
<i>Details</i>	6
<i>Harmonies</i>	11
<i>Previews</i>	23
<i>Color Blindness Simulation</i>	26
<i>CSS Examples</i>	29

Color

Decimal(13544364)

Conversions

Conversions Part 1

Format	Color
Hex	CEABAC
RGB	206, 171, 172
RGB Percent	81%, 67%, 67%
CMY	0.1922, 0.3294, 0.3255
CMYK	0.00, 0.17, 0.17, 0.19
HSL	358°, 26%, 74%
HSV	358°, 17%, 81%
XYZ	47.4629, 45.2262, 45.2577
YIQ	181.5790, 20.5390, 7.7310

Conversions

Conversions Part 2

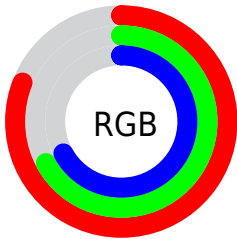
Format	Color
R _Y B	206, 171, 172
Decimal	13544364
CIE Lab	73.04, 12.89, 4.26
CIE LCh	73, 13.572, 18.290
Yxy	45.2262, 0.3441, 0.3279
Android (android.graphics.Color)	4291734444 (0xFFCEABAC)
YUV	181.5790, -4.7224, 21.4172
Hunter-Lab	67.2504, 8.2906, 7.1748

Details

The Decimal color **13544364** is a light color, and the websafe version is hex **CC9999**. A complement of this color would be **11259597**, and the grayscale version is **11974326**.

A 20% lighter version of the original color is **16769763**, and **9926520** is the 20% darker color. If you saturate the color by 10%, you get **13538968**, and if you desaturate by 10%, it is **13549760**.

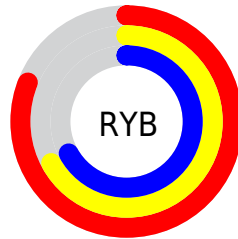
Distribution



Red (81%)

Green (67%)

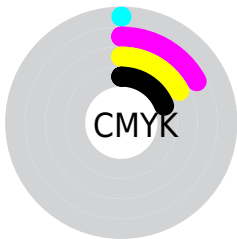
Blue (67%)



Red (81%)

Yellow (67%)

Blue (67%)

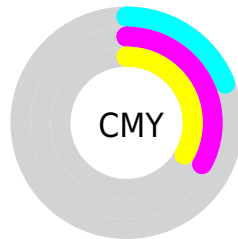


Cyan (0%)

Magenta (17%)

Yellow (17%)

Black (19%)



Cyan (19%)

Magenta (33%)

Yellow (33%)

Brightness & Saturation Gradients

These gradients show how the Decimal color 13544364 changes by changing the brightness by 10 percent. The first figure shows a shift by +10% for each color and the second figure -10%.

Similar to the brightness gradients but the following saturation gradients show a change of the Decimal color 13544364 by changing the saturation by 10% instead.

■ 13544364

■ 13544364

16777215

■ 11702417

■ 16769763

■ 9926520

■ 8216159

■ 6571591

■ 4927537

■ 3414556

■ 2162945

■ 0

■ 13544364

■ 13544364

 13538968

 13549760

 13533828

 13554900

 13528432

 13560296

 13523292

 13565436

 13517896

 13565951

 13512500

 13507360

 13501964

 13500422

Harmonies

Analogous

The Analogous color harmony consists of three colors that are next to each other on the color wheel.



13282233



13544364



13348257

Triad

The Triadic color harmony groups three colors that are evenly spaced from another and form a triangle on the color wheel.



13544364



10991779



10532555

Complementary

The Complementary color scheme is a pair of colors which are on the opposite of each other on the color wheel.



13544364



11259597

Split Complementary

Split-complementary colors differ from the complementary color scheme. The scheme consists of three colors, the original color and two neighbors of the complement color.



9877957



13544364



10205870

Square

The Square scheme is like the rectangle color scheme, but the four colors are evenly spaced on the color wheel.



13544364



11908508



9747387



11580107

Rectangle

The Rectangle color scheme consists of four colors that form a rectangle on the color wheel.



13544364



13021085



9747387



10270666

Sweetspot

The Sweet Spot groups the original color and five complimentary colors.



13544364



16773875



13478862



8419448



0



8421504

Same Dimension

The Same Dimension uses a secret algorithm to generate beautiful new colors.



13544364



16764109



13548459



6708316



10878981



2490369

Inverse Universe

The Inverse Universe completely reimagines the original color for something new.



13544364



16764109



11255502



6708316



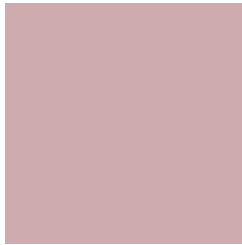
10878981



2490369

Previews

White Background



This preview shows how the Decimal color 13544364 looks on a white background.

Color Contrast Check

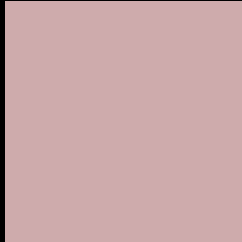
Large Text (above 18pt) WCAG AA × Fail

Any Text WCAG AA × Fail

Large Text (above 18pt) WCAG AAA × Fail

Any Text WCAG AAA × Fail

Black Background



This preview shows how the Decimal color 13544364 looks on a black background.

Color Contrast Check

Large Text (above 18pt) WCAG AA ✓ Pass

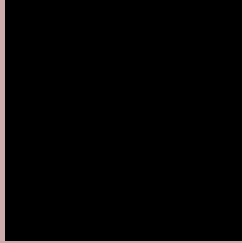
Any Text WCAG AA ✓ Pass

Large Text (above 18pt) WCAG AAA ✓ Pass

Any Text WCAG AAA ✓ Pass

If you want to check with other color combinations, try the [Color Contrast Checker](#).

Decimal 13544364 Background



This preview shows how black text looks on a background with the Decimal color 13544364.



This preview shows how white text looks on a background with the Decimal color 13544364.

Color Blindness Simulation

Color vision deficiency is a very complex topic, and I could not describe the different causes any better than Wikipedia does, so if you want to learn more, you should check out their [article about color blindness](#).


Dichromacy



Original Color
13544364

Protanopia
12039088

Deuteranopia
13151660



Tritanopia
13609399

Trichromacy



Original Color
13544364

Protanomaly
12562607

Deuteranomaly
13282476

Tritanomaly
13609651

Monochromacy



Original Color
13544364

Achromatopsia
11974326

Achromatomaly
12563122

CSS Examples

Text

The CSS property to change the color of the text to Decimal 13544364 is called "color". The color property can be set on classes, ids or directly on the HTML element.

This example shows how text in the color #CEABAC looks like.

```
.text, #text, p{  
    color:#CEABAC  
}
```

If you want to add a text shadow in that color use the text-shadow property, you can generate a text shadow directly with our [CSS Text Shadow Generator](#).

Here you see how black text with a 4 pixel #CEABAC colored shadow looks like.

```
.shadow{ text-shadow: 4px 4px 2px #CEABAC
}
```

Border

The CSS property to change the border of an element to Decimal 13544364 is called "border". The border property can be set on classes, ids or directly on the HTML element.

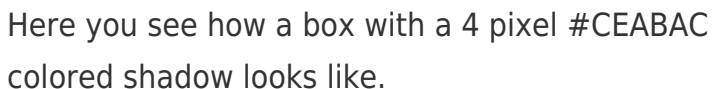
This example shows the color as border, it can be applied via the CSS property "border" or "border-color".

```
.border, #border, table{ border:4px solid
#CEABAC }
```

If only the border color should be changed use the property `border-color`.

```
.border{ border-color:#CEABAC }
```

If you want to add a box shadow in that color use:



Here you see how a box with a 4 pixel #CEABAC colored shadow looks like.

```
.boxshadow{ -moz-box-shadow:4px 4px 4px  
4px #CEABAC; -webkit-box-shadow:4px 4px  
4px 4px #CEABAC; box-shadow:4px 4px 4px  
4px #CEABAC }
```

Background

The CSS property to change the background color of an element to Decimal 13544364 is called "background". The background property can be set on classes, ids or directly on the HTML element.

```
.background, #background, body{  
background:#CEABAC }
```

If only the background color should be changed can be used:

```
.background{ background-color:#CEABAC }
```

This example shows the color as background, it is applied via the CSS property "background".

To optimize and compress your CSS code, you can use our [online CSS compressor and optimizer](#) based on csstidy. If you want to create a linear or radial gradient as background or border, check our [CSS Gradient Generator](#).

Hey! You found this booklet interesting? Support Converting Colors with the new Membership Option!

The pro membership hides all ads, plus gives you double the colors in the color bucket, and more awesome pro features!

[Learn more, Memberships starting at \\$2.50/m!](#)

**Follow me
on Twitter!**

@ConvertingColor