

# Converting Colors

Decimal(13544627)

Have a look what the booklet for  
Decimal(13544627) contains.

<b>Decimal(13544627)</b> .....	3
<i><b>Conversions</b></i> .....	4
<i><b>Details</b></i> .....	6
<i><b>Harmonies</b></i> .....	11
<i><b>Previews</b></i> .....	23
<i><b>Color Blindness Simulation</b></i> .....	26
<i><b>CSS Examples</b></i> .....	29

# **Color**

**Decimal(13544627)**

# Conversions

## Conversions Part 1

Format	Color
Hex	CEACB3
RGB	206, 172, 179
RGB Percent	81%, 67%, 70%
CMY	0.1922, 0.3255, 0.2980
CMYK	0.00, 0.17, 0.13, 0.19
HSL	348°, 26%, 74%
HSV	348°, 17%, 81%
XYZ	48.3428, 45.8815, 48.9559
YIQ	182.9640, 18.0170, 9.3850

# Conversions

## Conversions Part 2

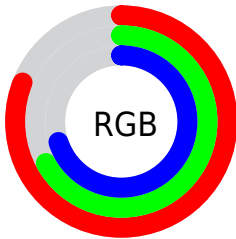
<b>Format</b>	<b>Color</b>
R <sub>Y</sub> B	206, 172, 179
Decimal	13544627
CIE Lab	73.47, 13.48, 1.04
CIE LCh	73, 13.517, 4.402
Yxy	45.8815, 0.3376, 0.3204
Android (android.graphics.Color)	4291734707 (0xFFCEACB3)
YUV	182.9640, -1.9543, 20.2026
Hunter-Lab	67.7359, 8.8568, 4.5635

# Details

The Decimal color **13544627** is a light color, and the websafe version is hex **CC9999**. A complement of this color would be **11325127**, and the grayscale version is **12040119**.

A 20% lighter version of the original color is **16770027**, and **9926782** is the 20% darker color. If you saturate the color by 10%, you get **13539235**, and if you desaturate by 10%, it is **13550019**.

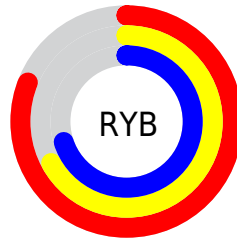
# Distribution



Red (81%)

Green (67%)

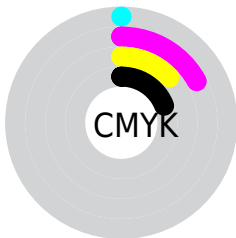
Blue (70%)



Red (81%)

Yellow (67%)

Blue (70%)

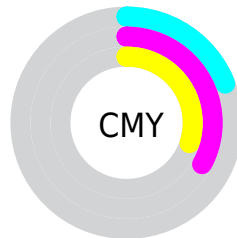


Cyan (0%)

Magenta (17%)

Yellow (13%)

Black (19%)



Cyan (19%)

Magenta (33%)

Yellow (30%)

# Brightness & Saturation Gradients

These gradients show how the Decimal color 13544627 changes by changing the brightness by 10 percent. The first figure shows a shift by +10% for each color and the second figure -10%.

Similar to the brightness gradients but the following saturation gradients show a change of the Decimal color 13544627 by changing the saturation by 10% instead.



 13544627

 13544627

16777215

 11702680

 16770027

 9926782

 8216421

 6571853

 4993079

 3414817

 2163211

 0

 13544627

 13544627

 13539235

 13550019

 13534098

 13555156

 13528706

 13560548

 13523570

 13565684

 13518177

 13565951

 13512785

 13507648

 13502256

 13500458

# Harmonies

## Analogous

The Analogous color harmony consists of three colors that are next to each other on the color wheel.



13020607



13544627



13544871

# Triad

The Triadic color harmony groups three colors that are evenly spaced from another and form a triangle on the color wheel.



13544627



11516064



10271178

# Complementary

The Complementary color scheme is a pair of colors which are on the opposite of each other on the color wheel.



13544627



11325127

# Split Complementary

Split-complementary colors differ from the complementary color scheme. The scheme consists of three colors, the original color and two neighbors of the complement color.



9812930



13544627



10599337

# Square

The Square scheme is like the rectangle color scheme, but the four colors are evenly spaced on the color wheel.



13544627



12432540



9944246



11122125

# Rectangle

The Rectangle color scheme consists of four colors that form a rectangle on the color wheel.



13544627



13348769



9944246



10074824

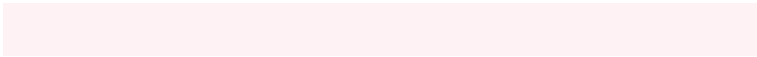


# Sweetspot

The Sweet Spot groups the original color and five complimentary colors.



13544627



16773877



13085902



8419449



0



8421504



# Same Dimension

The Same Dimension uses a secret algorithm to generate beautiful new colors.



13544627



16764118



13547180



6708318



10879010



2490376



# Inverse Universe

The Inverse Universe completely reimagines the original color for something new.



13544627



16764118



11322574



6708318



10879010

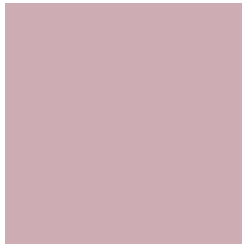


2490376



# Previews

## White Background



This preview shows how the Decimal color 13544627 looks on a white background.

## Color Contrast Check

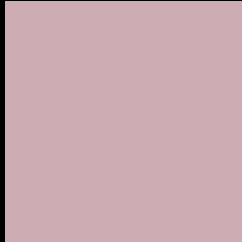
Large Text (above 18pt) WCAG AA × Fail

Any Text WCAG AA × Fail

Large Text (above 18pt) WCAG AAA × Fail

Any Text WCAG AAA × Fail

# Black Background



This preview shows how the Decimal color 13544627 looks on a black background.

## Color Contrast Check

Large Text (above 18pt) WCAG AA ✓ Pass

Any Text WCAG AA ✓ Pass

Large Text (above 18pt) WCAG AAA ✓ Pass

Any Text WCAG AAA ✓ Pass

If you want to check with other color combinations, try the [Color Contrast Checker](#).



## Decimal 13544627 Background



This preview shows how black text looks on a background with the Decimal color 13544627.




This preview shows how white text looks on a background with the Decimal color 13544627.

# Color Blindness Simulation

Color vision deficiency is a very complex topic, and I could not describe the different causes any better than Wikipedia does, so if you want to learn more, you should check out their [article about color blindness](#).

## Dichromacy





**Tritanopia**  
13609912

# Trichromacy



**Original Color**  
13544627

**Protanomaly**  
12562870

**Deuteranomaly**  
13282994

**Tritanomaly**  
13609910

# Monochromacy



**Original Color**  
13544627

**Achromatopsia**  
12040119

**Achromatomaly**  
12563382

# CSS Examples

## Text

The CSS property to change the color of the text to Decimal 13544627 is called "color". The color property can be set on classes, ids or directly on the HTML element.

This example shows how text in the color #CEACB3 looks like.

```
.text, #text, p{  
  color:#CEACB3  
}
```

If you want to add a text shadow in that color use the text-shadow property, you can generate a text shadow directly with our [CSS Text Shadow Generator](#).

Here you see how black text with a 4 pixel #CEACB3 colored shadow looks like.

```
.shadow{ text-shadow: 4px 4px 2px #CEACB3
}
```

## Border

The CSS property to change the border of an element to Decimal 13544627 is called "border". The border property can be set on classes, ids or directly on the HTML element.

This example shows the color as border, it can be applied via the CSS property "border" or "border-color".

```
.border, #border, table{ border:4px solid
#CEACB3 }
```

If only the border color should be changed use the property `border-color`.

```
.border{ border-color:#CEACB3 }
```

If you want to add a box shadow in that color use:

Here you see how a box with a 4 pixel #CEACB3 colored shadow looks like.

```
.boxshadow{ -moz-box-shadow:4px 4px 4px  
4px #CEACB3; -webkit-box-shadow:4px 4px  
4px 4px #CEACB3; box-shadow:4px 4px 4px  
4px #CEACB3 }
```

# Background

The CSS property to change the background color of an element to Decimal 13544627 is called "background". The background property can be set on classes, ids or directly on the HTML element.

```
.background, #background, body{  
background:#CEACB3 }
```

If only the background color should be changed can be used:

```
.background{ background-color:#CEACB3 }
```

This example shows the color as background, it is applied via the CSS property "background".

To optimize and compress your CSS code, you can use our [online CSS compressor and optimizer](#) based on csstidy. If you want to create a linear or radial gradient as background or border, check our [CSS Gradient Generator](#).



Hey! You found this booklet interesting? Support Converting Colors with the new Membership Option!

The pro membership hides all ads, plus gives you double the colors in the color bucket, and more awesome pro features!

**[Learn more, Memberships starting at \\$2.50/m!](#)**

**Follow me  
on Twitter!**

@ConvertingColor