

Converting Colors

Decimal(13544875)

Have a look what the booklet for
Decimal(13544875) contains.

Decimal(13544875)	3
<i>Conversions</i>	4
<i>Details</i>	6
<i>Harmonies</i>	11
<i>Previews</i>	23
<i>Color Blindness Simulation</i>	26
<i>CSS Examples</i>	29

Color

Decimal(13544875)

Conversions

Conversions Part 1

Format	Color
Hex	CEADAB
RGB	206, 173, 171
RGB Percent	81%, 68%, 67%
CMY	0.1922, 0.3216, 0.3294
CMYK	0.00, 0.16, 0.17, 0.19
HSL	3°, 26%, 74%
HSV	3°, 17%, 81%
XYZ	47.7479, 45.9492, 44.8806
YIQ	182.6390, 20.3100, 6.3740

Conversions

Conversions Part 2

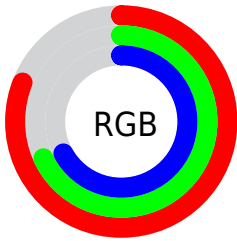
Format	Color
R_{YB}	206, 173, 171
Decimal	13544875
CIE _{Lab}	73.51, 11.64, 5.49
CIE _{LCh}	74, 12.873, 25.238
Yxy	45.9492, 0.3446, 0.3316
Android (android.graphics.Color)	4291734955 (0xFFCEADAB)
YUV	182.6390, -5.7380, 20.4876
Hunter-Lab	67.7859, 7.1088, 8.1946

Details

The Decimal color **13544875** is a light color, and the websafe version is hex **CC9999**. A complement of this color would be **11259086**, and the grayscale version is **12040119**.

A 20% lighter version of the original color is **16770274**, and **9927031** is the 20% darker color. If you saturate the color by 10%, you get **13539990**, and if you desaturate by 10%, it is **13549760**.

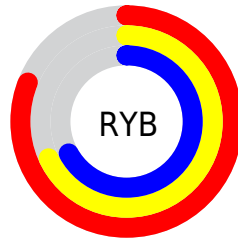
Distribution



Red (81%)

Green (68%)

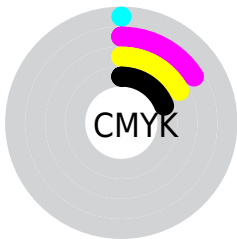
Blue (67%)



Red (81%)

Yellow (68%)

Blue (67%)

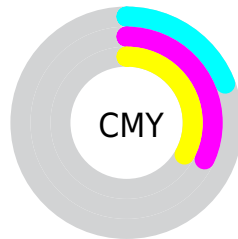


Cyan (0%)

Magenta (16%)

Yellow (17%)

Black (19%)



Cyan (19%)

Magenta (32%)

Yellow (33%)

Brightness & Saturation Gradients

These gradients show how the Decimal color 13544875 changes by changing the brightness by 10 percent. The first figure shows a shift by +10% for each color and the second figure -10%.

Similar to the brightness gradients but the following saturation gradients show a change of the Decimal color 13544875 by changing the saturation by 10% instead.

 13544875

 13544875

16777215

 11702929

 16770274

 9927031

 8216670

 6572103

 4927792

 3415067

 2163456

 0

 13544875

 13544875

 13539990

 13549760

 13534850

 13554900

 13529965

 13559785

 13524825

 13564925

 13519940

 13565951

 13514799

 13509915

 13505030

 13503488

Harmonies

Analogous

The Analogous color harmony consists of three colors that are next to each other on the color wheel.



13348279



13544875



13283234

Triad

The Triadic color harmony groups three colors that are evenly spaced from another and form a triangle on the color wheel.



13544875



10926759



10925772

Complementary

The Complementary color scheme is a pair of colors which are on the opposite of each other on the color wheel.



13544875



11259086

Split Complementary

Split-complementary colors differ from the complementary color scheme. The scheme consists of three colors, the original color and two neighbors of the complement color.



10140104



13544875



10206386

Square

The Square scheme is like the rectangle color scheme, but the four colors are evenly spaced on the color wheel.



13544875



11777951



9943998



11907786

Rectangle

The Rectangle color scheme consists of four colors that form a rectangle on the color wheel.



13544875



12890782



9943998



10598347

Sweetspot

The Sweet Spot groups the original color and five complimentary colors.



13544875



16774130



13544396



8419448



0



8421504

Same Dimension

The Same Dimension uses a secret algorithm to generate beautiful new colors.



13544875



16764876



13549227



6708316



10881280



2490880

Inverse Universe

The Inverse Universe completely reimagines the original color for something new.



11259086



13434111



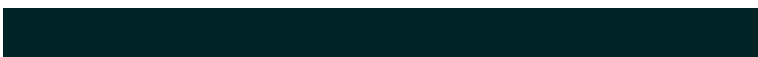
11254734



6055270



40102



9254

Previews

White Background



This preview shows how the Decimal color 13544875 looks on a white background.

Color Contrast Check

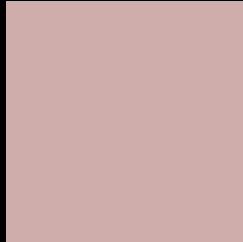
Large Text (above 18pt) WCAG AA × Fail

Any Text WCAG AA × Fail

Large Text (above 18pt) WCAG AAA × Fail

Any Text WCAG AAA × Fail

Black Background



This preview shows how the Decimal color 13544875 looks on a black background.

Color Contrast Check

Large Text (above 18pt) WCAG AA ✓ Pass

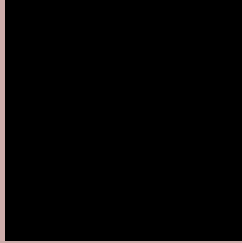
Any Text WCAG AA ✓ Pass

Large Text (above 18pt) WCAG AAA ✓ Pass

Any Text WCAG AAA ✓ Pass

If you want to check with other color combinations, try the [Color Contrast Checker](#).

Decimal 13544875 Background



This preview shows how black text looks on a background with the Decimal color 13544875.



This preview shows how white text looks on a background with the Decimal color 13544875.

Color Blindness Simulation

Color vision deficiency is a very complex topic, and I could not describe the different causes any better than Wikipedia does, so if you want to learn more, you should check out their [article about color blindness](#).


Dichromacy



Original Color
13544875

Protanopia
12170415

Deuteranopia
13283243



Tritanopia
13675448

Trichromacy



Original Color
13544875

Protanomaly
12693934

Deuteranomaly
13348523

Tritanomaly
13610163

Monochromacy



Original Color
13544875

Achromatopsia
12040119

Achromatomaly
12563379

CSS Examples

Text

The CSS property to change the color of the text to Decimal 13544875 is called "color". The color property can be set on classes, ids or directly on the HTML element.

This example shows how text in the color #CEADAB looks like.

```
.text, #text, p{  
  color:#CEADAB  
}
```

If you want to add a text shadow in that color use the text-shadow property, you can generate a text shadow directly with our [CSS Text Shadow Generator](#).

Here you see how black text with a 4 pixel #CEADAB colored shadow looks like.

```
.shadow{ text-shadow: 4px 4px 2px #CEADAB
}
```

Border

The CSS property to change the border of an element to Decimal 13544875 is called "border". The border property can be set on classes, ids or directly on the HTML element.

This example shows the color as border, it can be applied via the CSS property "border" or "border-color".

```
.border, #border, table{ border:4px solid
#CEADAB }
```

If only the border color should be changed use the property `border-color`.

```
.border{ border-color:#CEADAB }
```

If you want to add a box shadow in that color use:

Here you see how a box with a 4 pixel #CEADAB colored shadow looks like.

```
.boxshadow{ -moz-box-shadow:4px 4px 4px  
4px #CEADAB; -webkit-box-shadow:4px 4px  
4px 4px #CEADAB; box-shadow:4px 4px 4px  
4px #CEADAB }
```

Background

The CSS property to change the background color of an element to Decimal 13544875 is called "background". The background property can be set on classes, ids or directly on the HTML element.

```
.background, #background, body{  
background:#CEADAB }
```

If only the background color should be changed can be used:

```
.background{ background-color:#CEADAB }
```

This example shows the color as background, it is applied via the CSS property "background".

To optimize and compress your CSS code, you can use our [online CSS compressor and optimizer](#) based on csstidy. If you want to create a linear or radial gradient as background or border, check our [CSS Gradient Generator](#).

Hey! You found this booklet interesting? Support Converting Colors with the new Membership Option!

The pro membership hides all ads, plus gives you double the colors in the color bucket, and more awesome pro features!

[Learn more, Memberships starting at \\$2.50/m!](#)

**Follow me
on Twitter!**

@ConvertingColor