

# Converting Colors

Decimal(13545627)

Have a look what the booklet for  
Decimal(13545627) contains.

<b>Decimal(13545627)</b> .....	3
<i><b>Conversions</b></i> .....	4
<i><b>Details</b></i> .....	6
<i><b>Harmonies</b></i> .....	11
<i><b>Previews</b></i> .....	23
<i><b>Color Blindness Simulation</b></i> .....	26
<i><b>CSS Examples</b></i> .....	29

# **Color**

**Decimal(13545627)**

# Conversions

## Conversions Part 1

Format	Color
Hex	CEB09B
RGB	206, 176, 155
RGB Percent	81%, 69%, 61%
CMY	0.1922, 0.3098, 0.3922
CMYK	0.00, 0.15, 0.25, 0.19
HSL	25°, 34%, 71%
HSV	25°, 25%, 81%
XYZ	46.8953, 46.5390, 37.5216
YIQ	182.5760, 24.6210, -0.1710

# Conversions

## Conversions Part 2

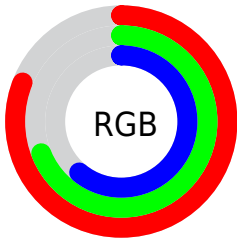
Format	Color
RYP	206, 191, 155
Decimal	13545627
CIELab	73.89, 7.62, 14.77
CIElCh	74, 16.621, 62.713
Yxy	46.5390, 0.3581, 0.3554
Android (android.graphics.Color)	4291735707 (0xFFCEB09B)
YUV	182.5760, -13.5950, 20.5428
Hunter-Lab	68.2195, 3.3199, 15.1434

# Details

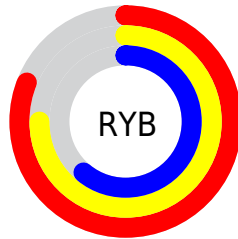
The Decimal color **13545627** is a light color, and the websafe version is hex **CC9999**. A complement of this color would be **10205646**, and the grayscale version is **12040119**.

A 20% lighter version of the original color is **16771281**, and **9927784** is the 20% darker color. If you saturate the color by 10%, you get **13542534**, and if you desaturate by 10%, it is **13548720**.

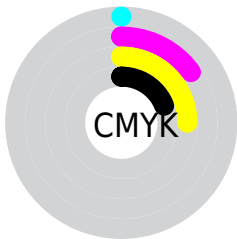
# Distribution



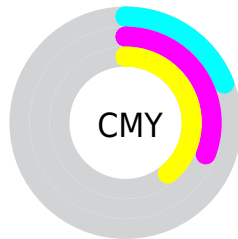
- Red (81%)
- Green (69%)
- Blue (61%)



- Red (81%)
- Yellow (75%)
- Blue (61%)



- Cyan (0%)
- Magenta (15%)
- Yellow (25%)
- Black (19%)



- Cyan (19%)
- Magenta (31%)
- Yellow (39%)

# Brightness & Saturation Gradients

These gradients show how the Decimal color 13545627 changes by changing the brightness by 10 percent. The first figure shows a shift by +10% for each color and the second figure -10%.

Similar to the brightness gradients but the following saturation gradients show a change of the Decimal color 13545627 by changing the saturation by 10% instead.



 13545627

 13545627

16777215

 11703681

 16771281

 9927784

 16777198

 8217424

 6507321

 4928547

 3350286

 1968128

 0

 13545627

 13545627

 13542534

 13548720

 13539442

 13551812

 13536349

 13554905

 13533257

 13557997

 13529908

 13561343

 13526815

 13564415

 13523723

 13565951

 13522176

# Harmonies

## Analogous

The Analogous color harmony consists of three colors that are next to each other on the color wheel.



14003366



13545627



12629399

# Triad

The Triadic color harmony groups three colors that are evenly spaced from another and form a triangle on the color wheel.



13545627



9551798



12235215

# Complementary

The Complementary color scheme is a pair of colors which are on the opposite of each other on the color wheel.



13545627



10205646

# Split Complementary

Split-complementary colors differ from the complementary color scheme. The scheme consists of three colors, the original color and two neighbors of the complement color.



10991316



13545627



9354949

# Square

The Square scheme is like the rectangle color scheme, but the four colors are evenly spaced on the color wheel.



13545627



10403239



9878480



13348292

# Rectangle

The Rectangle color scheme consists of four colors that form a rectangle on the color wheel.



13545627



11909273



9878480



11842514

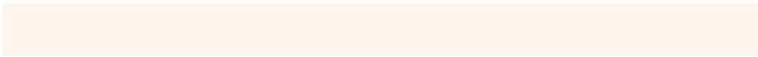


# Sweetspot

The Sweet Spot groups the original color and five complimentary colors.



13545627



16774637



13540282



8419957



0



8421504



# Same Dimension

The Same Dimension uses a secret algorithm to generate beautiful new colors.



13545627



16765619



13552027



6709340



10896384



2494464

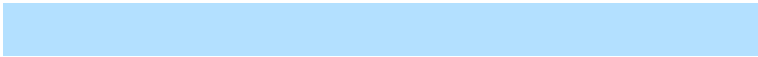


# Inverse Universe

The Inverse Universe completely reimagines the original color for something new.



10205646



11788543



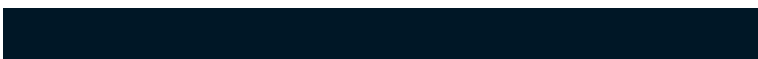
10199246



6054502



25254



5926



# Previews

## White Background



This preview shows how the Decimal color 13545627 looks on a white background.

## Color Contrast Check

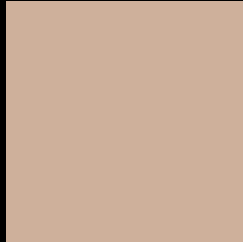
Large Text (above 18pt) WCAG AA × Fail

Any Text WCAG AA × Fail

Large Text (above 18pt) WCAG AAA × Fail

Any Text WCAG AAA × Fail

# Black Background



This preview shows how the Decimal color 13545627 looks on a black background.

## Color Contrast Check

Large Text (above 18pt) WCAG AA ✓ Pass

Any Text WCAG AA ✓ Pass

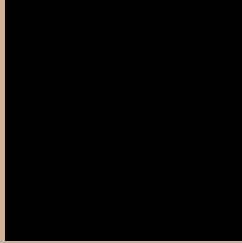
Large Text (above 18pt) WCAG AAA ✓ Pass

Any Text WCAG AAA ✓ Pass

If you want to check with other color combinations, try the [Color Contrast Checker](#).



## Decimal 13545627 Background



This preview shows how black text looks on a background with the Decimal color 13545627.



This preview shows how white text looks on a background with the Decimal color 13545627.

# Color Blindness Simulation

Color vision deficiency is a very complex topic, and I could not describe the different causes any better than Wikipedia does, so if you want to learn more, you should check out their [article about color blindness](#).

## Dichromacy





**Tritanopia**  
13806777

# Trichromacy



**Original Color**  
13545627

**Protanomaly**  
12891037

**Deuteranomaly**  
13676443

**Tritanomaly**  
13741486

# Monochromacy



**Original Color**  
13545627

**Achromatopsia**  
12040119

**Achromatomaly**  
12563629

# CSS Examples

## Text

The CSS property to change the color of the text to Decimal 13545627 is called "color". The color property can be set on classes, ids or directly on the HTML element.

This example shows how text in the color #CEB09B looks like.

```
.text, #text, p{  
  color:#CEB09B  
}
```

If you want to add a text shadow in that color use the text-shadow property, you can generate a text shadow directly with our [CSS Text Shadow Generator](#).

Here you see how black text with a 4 pixel #CEB09B colored shadow looks like.

```
.shadow{ text-shadow: 4px 4px 2px #CEB09B
}
```

## Border

The CSS property to change the border of an element to Decimal 13545627 is called "border". The border property can be set on classes, ids or directly on the HTML element.

This example shows the color as border, it can be applied via the CSS property "border" or "border-color".

```
.border, #border, table{ border:4px solid
#CEB09B }
```

If only the border color should be changed use the property `border-color`.

```
.border{ border-color:#CEB09B }
```

If you want to add a box shadow in that color use:

Here you see how a box with a 4 pixel #CEB09B colored shadow looks like.

```
.boxshadow{ -moz-box-shadow:4px 4px 4px  
4px #CEB09B; -webkit-box-shadow:4px 4px  
4px 4px #CEB09B; box-shadow:4px 4px 4px  
4px #CEB09B }
```

# Background

The CSS property to change the background color of an element to Decimal 13545627 is called "background". The background property can be set on classes, ids or directly on the HTML element.

```
.background, #background, body{  
background:#CEB09B }
```

If only the background color should be changed can be used:

```
.background{ background-color:#CEB09B }
```

This example shows the color as background, it is applied via the CSS property "background".

To optimize and compress your CSS code, you can use our [online CSS compressor and optimizer](#) based on csstidy. If you want to create a linear or radial gradient as background or border, check our [CSS Gradient Generator](#).



Hey! You found this booklet interesting? Support Converting Colors with the new Membership Option!

The pro membership hides all ads, plus gives you double the colors in the color bucket, and more awesome pro features!

**[Learn more, Memberships starting at \\$2.50/m!](#)**

**Follow me  
on Twitter!**

@ConvertingColor