

Converting Colors

Decimal(13546427)

Have a look what the booklet for
Decimal(13546427) contains.

Decimal(13546427)	3
<i>Conversions</i>	4
<i>Details</i>	6
<i>Harmonies</i>	11
<i>Previews</i>	23
<i>Color Blindness Simulation</i>	26
<i>CSS Examples</i>	29

Color

Decimal(13546427)

Conversions

Conversions Part 1

Format	Color
Hex	CEB3BB
RGB	206, 179, 187
RGB Percent	81%, 70%, 73%
CMY	0.1922, 0.2980, 0.2667
CMYK	0.00, 0.13, 0.09, 0.19
HSL	342°, 22%, 75%
HSV	342°, 13%, 81%
XYZ	50.5433, 48.9499, 53.7981
YIQ	187.9850, 13.5240, 8.2120

Conversions

Conversions Part 2

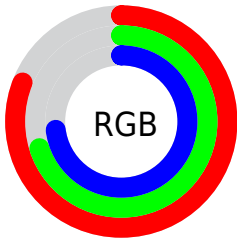
Format	Color
R _Y B	206, 179, 187
Decimal	13546427
CIE Lab	75.42, 11.03, -0.49
CIE LCh	75, 11.043, 357.450
Yxy	48.9499, 0.3297, 0.3193
Android (android.graphics.Color)	4291736507 (0xFFCEB3BB)
YUV	187.9850, -0.4856, 15.7992
Hunter-Lab	69.9642, 6.5142, 3.3846

Details

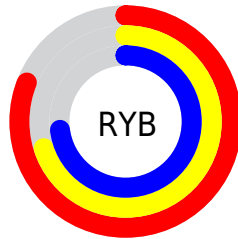
The Decimal color **13546427** is a light color, and the websafe version is hex **CCCCCC**. A complement of this color would be **11783878**, and the grayscale version is **12369084**.

A 20% lighter version of the original color is **16772083**, and **9993862** is the 20% darker color. If you saturate the color by 10%, you get **13541037**, and if you desaturate by 10%, it is **13551817**.

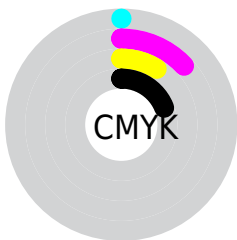
Distribution



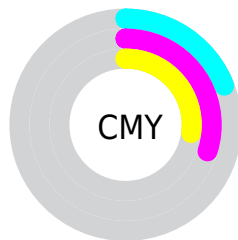
- Red (81%)
- Green (70%)
- Blue (73%)



- Red (81%)
- Yellow (70%)
- Blue (73%)



- Cyan (0%)
- Magenta (13%)
- Yellow (9%)
- Black (19%)



- Cyan (19%)
- Magenta (30%)
- Yellow (27%)

Brightness & Saturation Gradients

These gradients show how the Decimal color 13546427 changes by changing the brightness by 10 percent. The first figure shows a shift by +10% for each color and the second figure -10%.

Similar to the brightness gradients but the following saturation gradients show a change of the Decimal color 13546427 by changing the saturation by 10% instead.

 13546427

 13546427

16777215

 11704480

 16772083

 9993862

 8283501

 6573396

 4994621

 3481896

 2099987

 0

 13546427

 13546427

 13541037

 13551817

 13535902

 13556952

 13530512

 13562342

 13525377

 13565941

 13519987

 13565951

 13514596

 13509462

 13504071

 13500477

Harmonies

Analogous

The Analogous color harmony consists of three colors that are next to each other on the color wheel.



13022661



13546427



13677489

Triad

The Triadic color harmony groups three colors that are evenly spaced from another and form a triangle on the color wheel.



13546427



12106920



10796747

Complementary

The Complementary color scheme is a pair of colors which are on the opposite of each other on the color wheel.



13546427



11783878

Split Complementary

Split-complementary colors differ from the complementary color scheme. The scheme consists of three colors, the original color and two neighbors of the complement color.



10535107



13546427



11321263

Square

The Square scheme is like the rectangle color scheme, but the four colors are evenly spaced on the color wheel.



13546427



12827046



10797240



11451342

Rectangle

The Rectangle color scheme consists of four colors that form a rectangle on the color wheel.



13546427



13546923



10797240



10665928

Sweetspot

The Sweet Spot groups the original color and five complimentary colors.



13546427



16774648



13022158



8419707



0



8421504

Same Dimension

The Same Dimension uses a secret algorithm to generate beautiful new colors.



13546427



16766690



13547699



6708319



10879025



2490379

Inverse Universe

The Inverse Universe completely reimagines the original color for something new.



13546427



16766690



11782606



6708319



10879025



2490379

Previews

White Background



This preview shows how the Decimal color 13546427 looks on a white background.

Color Contrast Check

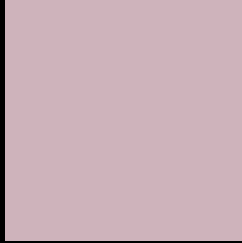
Large Text (above 18pt) WCAG AA × Fail

Any Text WCAG AA × Fail

Large Text (above 18pt) WCAG AAA × Fail

Any Text WCAG AAA × Fail

Black Background



This preview shows how the Decimal color 13546427 looks on a black background.

Color Contrast Check

Large Text (above 18pt) WCAG AA ✓ Pass

Any Text WCAG AA ✓ Pass

Large Text (above 18pt) WCAG AAA ✓ Pass

Any Text WCAG AAA ✓ Pass

If you want to check with other color combinations, try the [Color Contrast Checker](#).

Decimal 13546427 Background



This preview shows how black text looks on a background with the Decimal color 13546427.



This preview shows how white text looks on a background with the Decimal color 13546427.

Color Blindness Simulation

Color vision deficiency is a very complex topic, and I could not describe the different causes any better than Wikipedia does, so if you want to learn more, you should check out their [article about color blindness](#).

Dichromacy



Original Color
13546427

Protanopia
12368318

Deuteranopia
13350075



Tritanopia
13611712

Trichromacy



Original Color
13546427

Protanomaly
12826557

Deuteranomaly
13415611

Tritanomaly
13611710

Monochromacy



Original Color
13546427

Achromatopsia
12369084

Achromatomaly
12827068

CSS Examples

Text

The CSS property to change the color of the text to Decimal 13546427 is called "color". The color property can be set on classes, ids or directly on the HTML element.

This example shows how text in the color #CEB3BB looks like.

```
.text, #text, p{  
  color:#CEB3BB  
}
```

If you want to add a text shadow in that color use the text-shadow property, you can generate a text shadow directly with our [CSS Text Shadow Generator](#).

Here you see how black text with a 4 pixel #CEB3BB colored shadow looks like.

```
.shadow{ text-shadow: 4px 4px 2px #CEB3BB  
}
```

Border

The CSS property to change the border of an element to Decimal 13546427 is called "border". The border property can be set on classes, ids or directly on the HTML element.

This example shows the color as border, it can be applied via the CSS property "border" or "border-color".

```
.border, #border, table{ border:4px solid  
#CEB3BB }
```

If only the border color should be changed use the property `border-color`.

```
.border{ border-color:#CEB3BB }
```

If you want to add a box shadow in that color use:

Here you see how a box with a 4 pixel #CEB3BB colored shadow looks like.

```
.boxshadow{ -moz-box-shadow:4px 4px 4px  
4px #CEB3BB; -webkit-box-shadow:4px 4px  
4px 4px #CEB3BB; box-shadow:4px 4px 4px  
4px #CEB3BB }
```

Background

The CSS property to change the background color of an element to Decimal 13546427 is called "background". The background property can be set on classes, ids or directly on the HTML element.

```
.background, #background, body{  
background:#CEB3BB }
```

If only the background color should be changed can be used:

```
.background{ background-color:#CEB3BB }
```

This example shows the color as background, it is applied via the CSS property "background".

To optimize and compress your CSS code, you can use our [online CSS compressor and optimizer](#) based on csstidy. If you want to create a linear or radial gradient as background or border, check our [CSS Gradient Generator](#).

Hey! You found this booklet interesting? Support Converting Colors with the new Membership Option!

The pro membership hides all ads, plus gives you double the colors in the color bucket, and more awesome pro features!

[Learn more, Memberships starting at \\$2.50/m!](#)

**Follow me
on Twitter!**

@ConvertingColor