

# Converting Colors

Decimal(13547961)

Have a look what the booklet for  
Decimal(13547961) contains.

<b>Decimal(13547961)</b> .....	3
<i><b>Conversions</b></i> .....	4
<i><b>Details</b></i> .....	6
<i><b>Harmonies</b></i> .....	11
<i><b>Previews</b></i> .....	23
<i><b>Color Blindness Simulation</b></i> .....	26
<i><b>CSS Examples</b></i> .....	29

# **Color**

**Decimal(13547961)**

# Conversions

## Conversions Part 1

Format	Color
Hex	CEB9B9
RGB	206, 185, 185
RGB Percent	81%, 73%, 73%
CMY	0.1922, 0.2745, 0.2745
CMYK	0.00, 0.10, 0.10, 0.19
HSL	0°, 18%, 77%
HSV	0°, 10%, 81%
XYZ	51.5595, 51.3225, 53.0877
YIQ	191.2790, 12.5160, 4.4520

# Conversions

## Conversions Part 2

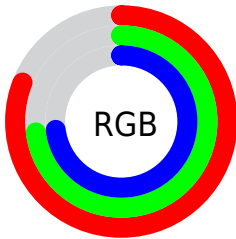
<b>Format</b>	<b>Color</b>
<b>R<sub>YB</sub></b>	206, 185, 185
Decimal	13547961
CIE Lab	76.87, 7.46, 2.71
CIE LCh	77, 7.940, 19.989
Yxy	51.3225, 0.3306, 0.3291
Android (android.graphics.Color)	4291738041 (0xFFCEB9B9)
YUV	191.2790, -3.0955, 12.9103
Hunter-Lab	71.6397, 3.0979, 6.2117

# Details

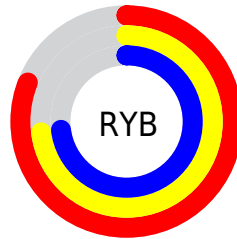
The Decimal color **13547961** is a light color, and the websafe version is hex **CCCCCC**. A complement of this color would be **12177102**, and the grayscale version is **12566463**.

A 20% lighter version of the original color is **16773617**, and **9995396** is the 20% darker color. If you saturate the color by 10%, you get **13542564**, and if you desaturate by 10%, it is **13553358**.

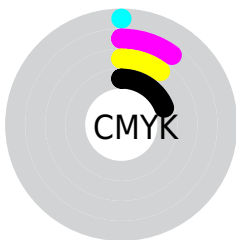
# Distribution



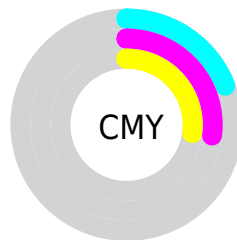
- Red (81%)
- Green (73%)
- Blue (73%)



- Red (81%)
- Yellow (73%)
- Blue (73%)



- Cyan (0%)
- Magenta (10%)
- Yellow (10%)
- Black (19%)



- Cyan (19%)
- Magenta (27%)
- Yellow (27%)

# Brightness & Saturation Gradients

These gradients show how the Decimal color 13547961 changes by changing the brightness by 10 percent. The first figure shows a shift by +10% for each color and the second figure -10%.

Similar to the brightness gradients but the following saturation gradients show a change of the Decimal color 13547961 by changing the saturation by 10% instead.



■ 13547961

■ 13547961

16777215

■ 11706014

■ 16773617

■ 9995396

■ 8285035

■ 6574931

■ 4995900

■ 3483174

■ 2101521

■ 0

■ 13547961

■ 13547961

 13542564

 13553358

 13537424

 13558498

 13532027

 13563895

 13526887

 13565951

 13521490

 13516093

 13510953

 13505556

 13500416

# Harmonies

## Analogous

The Analogous color harmony consists of three colors that are next to each other on the color wheel.



13351360



13547961



13417139

# Triad

The Triadic color harmony groups three colors that are evenly spaced from another and form a triangle on the color wheel.



13547961



11977140



11845580

# Complementary

The Complementary color scheme is a pair of colors which are on the opposite of each other on the color wheel.



13547961



12177102

# Split Complementary

Split-complementary colors differ from the complementary color scheme. The scheme consists of three colors, the original color and two neighbors of the complement color.



11387337



13547961



11518651

# Square

The Square scheme is like the rectangle color scheme, but the four colors are evenly spaced on the color wheel.



13547961



12566448



11322050



12369355

# Rectangle

The Rectangle color scheme consists of four colors that form a rectangle on the color wheel.



13547961



13221040



11322050



11649227



# Sweetspot

The Sweet Spot groups the original color and five complimentary colors.



13547961



16775159



13547982



8419962



0



8421504



# Same Dimension

The Same Dimension uses a secret algorithm to generate beautiful new colors.



13547961



16769248



13550777



6708316



10878976



2490368



# Inverse Universe

The Inverse Universe completely reimagines the original color for something new.



12177102



14745599



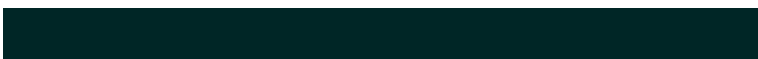
12174542



6055526



42662

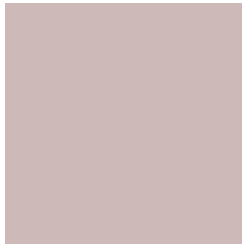


9766



# Previews

## White Background



This preview shows how the Decimal color 13547961 looks on a white background.

## Color Contrast Check

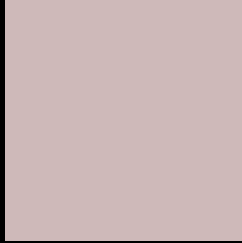
Large Text (above 18pt) WCAG AA × Fail

Any Text WCAG AA × Fail

Large Text (above 18pt) WCAG AAA × Fail

Any Text WCAG AAA × Fail

# Black Background



This preview shows how the Decimal color 13547961 looks on a black background.

## Color Contrast Check

Large Text (above 18pt) WCAG AA ✓ Pass

Any Text WCAG AA ✓ Pass

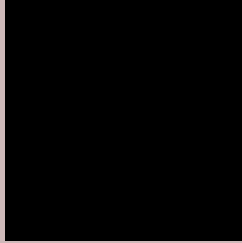
Large Text (above 18pt) WCAG AAA ✓ Pass

Any Text WCAG AAA ✓ Pass

If you want to check with other color combinations, try the [Color Contrast Checker](#).



## Decimal 13547961 Background



This preview shows how black text looks on a background with the Decimal color 13547961.



This preview shows how white text looks on a background with the Decimal color 13547961.

# Color Blindness Simulation

Color vision deficiency is a very complex topic, and I could not describe the different causes any better than Wikipedia does, so if you want to learn more, you should check out their [article about color blindness](#).


## Dichromacy



**Original Color**  
13547961

**Protanopia**  
12762555

**Deuteranopia**  
13809849



**Tritanopia**  
13678533

# Trichromacy



**Original Color**  
13547961

**Protanomaly**  
13024442

**Deuteranomaly**  
13744313

**Tritanomaly**  
13613249

# Monochromacy



**Original Color**  
13547961

**Achromatopsia**  
12566463

**Achromatomaly**  
12893629

# CSS Examples

## Text

The CSS property to change the color of the text to Decimal 13547961 is called "color". The color property can be set on classes, ids or directly on the HTML element.

This example shows how text in the color #CEB9B9 looks like.

```
.text, #text, p{  
    color:#CEB9B9  
}
```

If you want to add a text shadow in that color use the text-shadow property, you can generate a text shadow directly with our [CSS Text Shadow Generator](#).

Here you see how black text with a 4 pixel #CEB9B9 colored shadow looks like.

```
.shadow{ text-shadow: 4px 4px 2px #CEB9B9
}
```

## Border

The CSS property to change the border of an element to Decimal 13547961 is called "border". The border property can be set on classes, ids or directly on the HTML element.

This example shows the color as border, it can be applied via the CSS property "border" or "border-color".

```
.border, #border, table{ border:4px solid
#CEB9B9 }
```

If only the border color should be changed use the property `border-color`.

```
.border{ border-color:#CEB9B9 }
```

If you want to add a box shadow in that color use:

Here you see how a box with a 4 pixel #CEB9B9 colored shadow looks like.

```
.boxshadow{ -moz-box-shadow:4px 4px 4px  
4px #CEB9B9; -webkit-box-shadow:4px 4px  
4px 4px #CEB9B9; box-shadow:4px 4px 4px  
4px #CEB9B9 }
```

# Background

The CSS property to change the background color of an element to Decimal 13547961 is called "background". The background property can be set on classes, ids or directly on the HTML element.

```
.background, #background, body{  
background:#CEB9B9 }
```

If only the background color should be changed can be used:

```
.background{ background-color:#CEB9B9 }
```

This example shows the color as background, it is applied via the CSS property "background".

To optimize and compress your CSS code, you can use our [online CSS compressor and optimizer](#) based on csstidy. If you want to create a linear or radial gradient as background or border, check our [CSS Gradient Generator](#).



Hey! You found this booklet interesting? Support Converting Colors with the new Membership Option!

The pro membership hides all ads, plus gives you double the colors in the color bucket, and more awesome pro features!

**[Learn more, Memberships starting at \\$2.50/m!](#)**

**Follow me  
on Twitter!**

@ConvertingColor