

Converting Colors

Decimal(13578346)

Have a look what the booklet for
Decimal(13578346) contains.

| | |
|--|----|
| Decimal(13578346) | 3 |
| <i>Conversions</i> | 4 |
| <i>Details</i> | 6 |
| <i>Harmonies</i> | 11 |
| <i>Previews</i> | 23 |
| <i>Color Blindness Simulation</i> | 26 |
| <i>CSS Examples</i> | 29 |

Color

Decimal(13578346)

Conversions

Conversions Part 1

| Format | Color |
|---------------|----------------------------|
| Hex | CF306A |
| RGB | 207, 48, 106 |
| RGB Percent | 81%, 19%, 42% |
| CMY | 0.1882, 0.8118, 0.5843 |
| CMYK | 0.00, 0.77, 0.49, 0.19 |
| HSL | 338°, 62%, 50% |
| HSV | 338°, 77%, 81% |
| XYZ | 29.3906, 16.4199, 15.2560 |
| YIQ | 102.1530, 76.1460, 51.7460 |

Conversions

Conversions Part 2

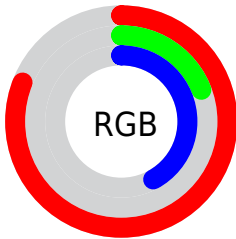
| Format | Color |
|-------------------------------------|------------------------------|
| R_{YB} | 207, 48, 106 |
| Decimal | 13578346 |
| CIE _{Lab} | 47.52, 64.32, 5.64 |
| CIE _{LCh} | 48, 64.563, 5.012 |
| Yxy | 16.4199, 0.4813, 0.2689 |
| Android (android.graphics.Color) | 4291768426 (0xFFCF306A) |
| YUV | 102.1530, 1.8966, 91.9508 |
| Hunter-Lab | 40.5215, 58.5550, 6.0429 |

Details

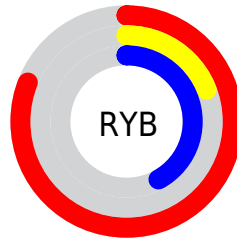
The Decimal color **13578346** is a dark color, and the websafe version is hex **CC3366**. The color can be described as dark muted rose. A complement of this color would be **3198869**, and the grayscale version is **6710886**.

A 20% lighter version of the original color is **16739741**, and **9633851** is the 20% darker color. If you saturate the color by 10%, you get **13572957**, and if you desaturate by 10%, it is **13583735**.

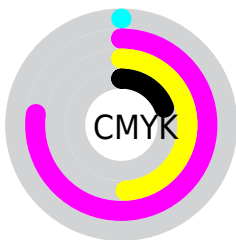
Distribution



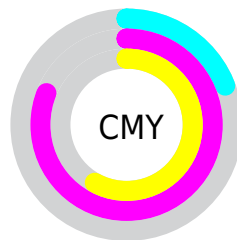
- Red (81%)
- Green (19%)
- Blue (42%)



- Red (81%)
- Yellow (19%)
- Blue (42%)



- Cyan (0%)
- Magenta (77%)
- Yellow (49%)
- Black (19%)



- Cyan (19%)
- Magenta (81%)
- Yellow (58%)

Brightness & Saturation Gradients

These gradients show how the Decimal color 13578346 changes by changing the brightness by 10 percent. The first figure shows a shift by +10% for each color and the second figure -10%.

Similar to the brightness gradients but the following saturation gradients show a change of the Decimal color 13578346 by changing the saturation by 10% instead.

 13578346

 13578346

16777215

 11599954

 16739741

 9633851

 16746936

 7667750

 16754387

 5767185

 16761840

 3932163

 16769535

 1507328

16776959

 0

 13578346

 13578346

 13572957

 13583735

■ 13567824

■ 13588868

■ 13566028

■ 13594257

■ 13599647

■ 13605036

■ 13610169

■ 13615558

■ 13620947

■ 13626080

Harmonies

Analogous

The Analogous color harmony consists of three colors that are next to each other on the color wheel.



12075424



13578346



13123893

Triad

The Triadic color harmony groups three colors that are evenly spaced from another and form a triangle on the color wheel.



13578346



4685568



33492

Complementary

The Complementary color scheme is a pair of colors which are on the opposite of each other on the color wheel.



13578346



3198869

Split Complementary

Split-complementary colors differ from the complementary color scheme. The scheme consists of three colors, the original color and two neighbors of the complement color.



34990



13578346



34368

Square

The Square scheme is like the rectangle color scheme, but the four colors are evenly spaced on the color wheel.



13578346



8417536



35193



30174

Rectangle

The Rectangle color scheme consists of four colors that form a rectangle on the color wheel.



13578346



12014608



35193



34250

Sweetspot

The Sweet Spot groups the original color and five complimentary colors.



13578346



16762074



9777359



8412265



0



8421504

Same Dimension

The Same Dimension uses a secret algorithm to generate beautiful new colors.



13578346



16716906



13583664



6905442



11010109



2686991

Inverse Universe

The Inverse Universe completely reimagines the original color for something new.



13578346



16716906



3193551



6905442



11010109



2686991

Previews

White Background



This preview shows how the Decimal color 13578346 looks on a white background.

Color Contrast Check

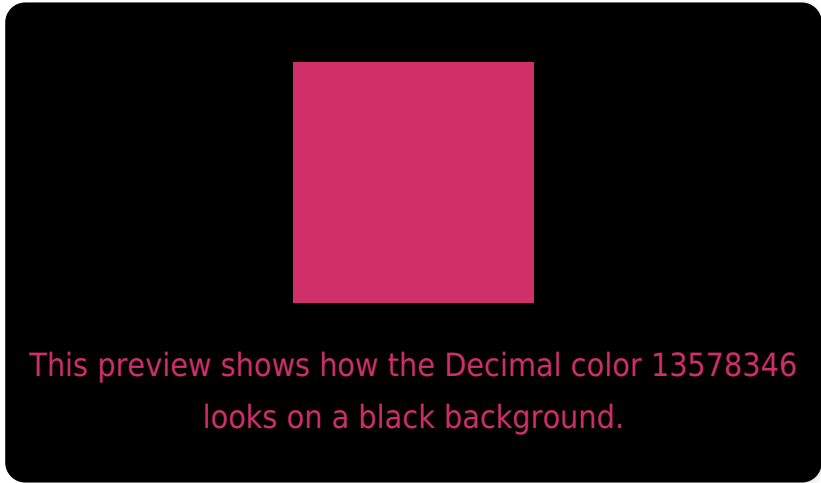
Large Text (above 18pt) WCAG AA ✓ Pass

Any Text WCAG AA ✓ Pass

Large Text (above 18pt) WCAG AAA ✓ Pass

Any Text WCAG AAA × Fail

Black Background



Color Contrast Check

Large Text (above 18pt) WCAG AA ✓ Pass

Any Text WCAG AA × Fail

Large Text (above 18pt) WCAG AAA × Fail

Any Text WCAG AAA × Fail

If you want to check with other color combinations, try the [Color Contrast Checker](#).

Decimal 13578346 Background



This preview shows how black text looks on a background with the Decimal color 13578346.



This preview shows how white text looks on a background with the Decimal color 13578346.

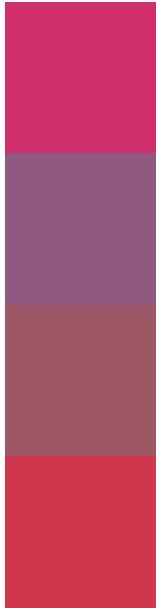
Color Blindness Simulation

Color vision deficiency is a very complex topic, and I could not describe the different causes any better than Wikipedia does, so if you want to learn more, you should check out their [article about color blindness](#).

Dichromacy



Trichromacy



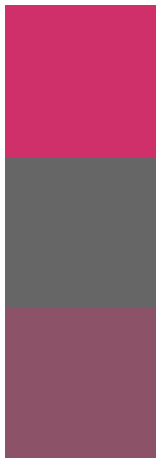
Original Color
13578346

Protanomaly
9394561

Deuteranomaly
10377061

Tritanomaly
13514574

Monochromacy



Original Color
13578346

Achromatopsia
6710886

Achromatomaly
9196135

CSS Examples

Text

The CSS property to change the color of the text to Decimal 13578346 is called "color". The color property can be set on classes, ids or directly on the HTML element.

This example shows how text in the color #CF306A looks like.

```
.text, #text, p{  
    color:#CF306A  
}
```

If you want to add a text shadow in that color use the text-shadow property, you can generate a text shadow directly with our [CSS Text Shadow Generator](#).

Here you see how black text with a 4 pixel #CF306A colored shadow looks like.

```
.shadow{ text-shadow: 4px 4px 2px #CF306A
}
```

Border

The CSS property to change the border of an element to Decimal 13578346 is called "border". The border property can be set on classes, ids or directly on the HTML element.

This example shows the color as border, it can be applied via the CSS property "border" or "border-color".

```
.border, #border, table{ border:4px solid
#CF306A }
```

If only the border color should be changed use the property `border-color`.

```
.border{ border-color:#CF306A }
```

If you want to add a box shadow in that color use:

Here you see how a box with a 4 pixel #CF306A colored shadow looks like.

```
.boxshadow{ -moz-box-shadow:4px 4px 4px  
4px #CF306A; -webkit-box-shadow:4px 4px  
4px 4px #CF306A; box-shadow:4px 4px 4px  
4px #CF306A }
```

Background

The CSS property to change the background color of an element to Decimal 13578346 is called "background". The background property can be set on classes, ids or directly on the HTML element.

```
.background, #background, body{  
background:#CF306A }
```

If only the background color should be changed can be used:

```
.background{ background-color:#CF306A }
```

This example shows the color as background, it is applied via the CSS property "background".

To optimize and compress your CSS code, you can use our [online CSS compressor and optimizer](#) based on csstidy. If you want to create a linear or radial gradient as background or border, check our [CSS Gradient Generator](#).

Hey! You found this booklet interesting? Support Converting Colors with the new Membership Option!

The pro membership hides all ads, plus gives you double the colors in the color bucket, and more awesome pro features!

[Learn more, Memberships starting at \\$2.50/m!](#)

**Follow me
on Twitter!**

@ConvertingColor