

Converting Colors

Decimal(13582969)

Have a look what the booklet for
Decimal(13582969) contains.

Decimal(13582969)	3
<i>Conversions</i>	4
<i>Details</i>	6
<i>Harmonies</i>	11
<i>Previews</i>	23
<i>Color Blindness Simulation</i>	26
<i>CSS Examples</i>	29

Color

Decimal(13582969)

Conversions

Conversions Part 1

Format	Color
Hex	CF4279
RGB	207, 66, 121
RGB Percent	81%, 26%, 47%
CMY	0.1882, 0.7412, 0.5255
CMYK	0.00, 0.68, 0.42, 0.19
HSL	337°, 59%, 54%
HSV	337°, 68%, 81%
XYZ	31.1315, 18.5423, 20.0274
YIQ	114.4290, 66.3810, 46.9970

Conversions

Conversions Part 2

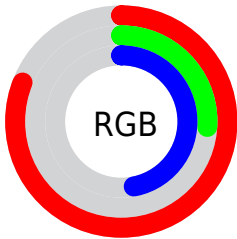
Format	Color
R_{YB}	207, 66, 121
Decimal	13582969
CIE _{Lab}	50.15, 59.54, 0.31
CIE _{LCh}	50, 59.543, 0.294
Yxy	18.5423, 0.4466, 0.2660
Android (android.graphics.Color)	4291773049 (0xFFCF4279)
YUV	114.4290, 3.2395, 81.1848
Hunter-Lab	43.0608, 53.6933, 2.5670

Details

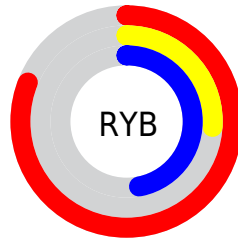
The Decimal color **13582969** is a dark color, and the websafe version is hex **CC3366**. The color can be described as dark muted rose. A complement of this color would be **4378520**, and the grayscale version is **7500402**.

A 20% lighter version of the original color is **16743341**, and **9699401** is the 20% darker color. If you saturate the color by 10%, you get **13577580**, and if you desaturate by 10%, it is **13588358**.

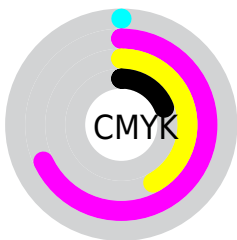
Distribution



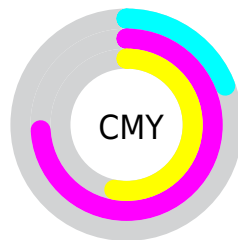
- Red (81%)
- Green (26%)
- Blue (47%)



- Red (81%)
- Yellow (26%)
- Blue (47%)



- Cyan (0%)
- Magenta (68%)
- Yellow (42%)
- Black (19%)



- Cyan (19%)
- Magenta (74%)
- Yellow (53%)

Brightness & Saturation Gradients

These gradients show how the Decimal color 13582969 changes by changing the brightness by 10 percent. The first figure shows a shift by +10% for each color and the second figure -10%.

Similar to the brightness gradients but the following saturation gradients show a change of the Decimal color 13582969 by changing the saturation by 10% instead.

 13582969

 13582969

16777215

 11608672

 16743341

 9699401

 16750536

 7798834

 16757732

 5898270

 16765183

 4259843

 16772863

 2031617

 0

 13582969

 13582969

 13577580

 13588358

 13572448

 13593490

 13567059

 13598879

 13566033

 13604268

 13609400

 13614789

 13620177

 13625566

 13630699

Harmonies

Analogous

The Analogous color harmony consists of three colors that are next to each other on the color wheel.



11817386



13582969



13519687

Triad

The Triadic color harmony groups three colors that are evenly spaced from another and form a triangle on the color wheel.



13582969



6062862



35279

Complementary

The Complementary color scheme is a pair of colors which are on the opposite of each other on the color wheel.



13582969



4378520

Split Complementary

Split-complementary colors differ from the complementary color scheme. The scheme consists of three colors, the original color and two neighbors of the complement color.



36521



13582969



35650

Square

The Square scheme is like the rectangle color scheme, but the four colors are evenly spaced on the color wheel.



13582969



9401600



36470



32221

Rectangle

The Rectangle color scheme consists of four colors that form a rectangle on the color wheel.



13582969



12605737



36470



35781

Sweetspot

The Sweet Spot groups the original color and five complimentary colors.



13582969



16764128



9913039



8413549



0



8421504

Same Dimension

The Same Dimension uses a secret algorithm to generate beautiful new colors.



13582969



16723583



13586498



6905442



11010114



2686992

Inverse Universe

The Inverse Universe completely reimagines the original color for something new.



13582969



16723583



4374991



6905442



11010114



2686992

Previews

White Background



This preview shows how the Decimal color 13582969 looks on a white background.

Color Contrast Check

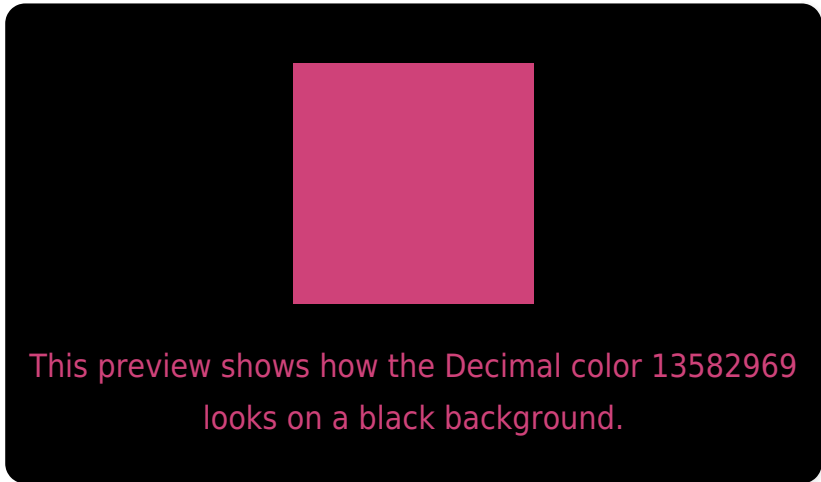
Large Text (above 18pt) WCAG AA ✓ Pass

Any Text WCAG AA ✗ Fail

Large Text (above 18pt) WCAG AAA ✗ Fail

Any Text WCAG AAA ✗ Fail

Black Background



Color Contrast Check

Large Text (above 18pt) WCAG AA ✓ Pass

Any Text WCAG AA ✓ Pass

Large Text (above 18pt) WCAG AAA ✓ Pass

Any Text WCAG AAA × Fail

If you want to check with other color combinations, try the [Color Contrast Checker](#).

Decimal 13582969 Background



This preview shows how black text looks on a background with the Decimal color 13582969.



This preview shows how white text looks on a background with the Decimal color 13582969.

Color Blindness Simulation

Color vision deficiency is a very complex topic, and I could not describe the different causes any better than Wikipedia does, so if you want to learn more, you should check out their [article about color blindness](#).

Dichromacy

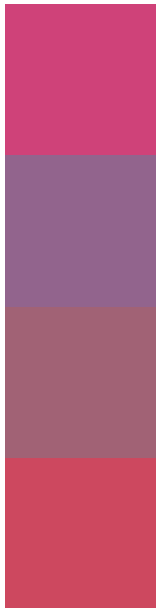


Original Color
13582969

Protanopia
7305113

Deuteranopia
8811634

Trichromacy



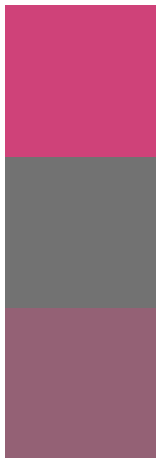
Original Color
13582969

Protanomaly
9593997

Deuteranomaly
10576501

Tritanomaly
13453407

Monochromacy



Original Color
13582969

Achromatopsia
7500402

Achromatomaly
9724277

CSS Examples

Text

The CSS property to change the color of the text to Decimal 13582969 is called "color". The color property can be set on classes, ids or directly on the HTML element.

This example shows how text in the color #CF4279 looks like.

```
.text, #text, p{  
    color:#CF4279  
}
```

If you want to add a text shadow in that color use the text-shadow property, you can generate a text shadow directly with our [CSS Text Shadow Generator](#).

Here you see how black text with a 4 pixel #CF4279 colored shadow looks like.

```
.shadow{ text-shadow: 4px 4px 2px #CF4279
}
```

Border

The CSS property to change the border of an element to Decimal 13582969 is called "border". The border property can be set on classes, ids or directly on the HTML element.

This example shows the color as border, it can be applied via the CSS property "border" or "border-color".

```
.border, #border, table{ border:4px solid
#CF4279 }
```

If only the border color should be changed use the property `border-color`.

```
.border{ border-color:#CF4279 }
```

If you want to add a box shadow in that color use:

Here you see how a box with a 4 pixel #CF4279 colored shadow looks like.

```
.boxshadow{ -moz-box-shadow:4px 4px 4px  
4px #CF4279; -webkit-box-shadow:4px 4px  
4px 4px #CF4279; box-shadow:4px 4px 4px  
4px #CF4279 }
```

Background

The CSS property to change the background color of an element to Decimal 13582969 is called "background". The background property can be set on classes, ids or directly on the HTML element.

```
.background, #background, body{  
background:#CF4279 }
```

If only the background color should be changed can be used:

```
.background{ background-color:#CF4279 }
```

This example shows the color as background, it is applied via the CSS property "background".

To optimize and compress your CSS code, you can use our [online CSS compressor and optimizer](#) based on csstidy. If you want to create a linear or radial gradient as background or border, check our [CSS Gradient Generator](#).

Hey! You found this booklet interesting? Support Converting Colors with the new Membership Option!

The pro membership hides all ads, plus gives you double the colors in the color bucket, and more awesome pro features!

[Learn more, Memberships starting at \\$2.50/m!](#)

**Follow me
on Twitter!**

@ConvertingColor