

# Converting Colors

Decimal(13583987)

Have a look what the booklet for  
Decimal(13583987) contains.

<b>Decimal(13583987)</b> .....	3
<i><b>Conversions</b></i> .....	4
<i><b>Details</b></i> .....	6
<i><b>Harmonies</b></i> .....	11
<i><b>Previews</b></i> .....	23
<i><b>Color Blindness Simulation</b></i> .....	26
<i><b>CSS Examples</b></i> .....	29

# Color

**Decimal(13583987)**

# Conversions

## Conversions Part 1

<b>Format</b>	<b>Color</b>
Hex	CF4673
RGB	207, 70, 115
RGB Percent	81%, 27%, 45%
CMY	0.1882, 0.7255, 0.5490
CMYK	0.00, 0.66, 0.44, 0.19
HSL	340°, 59%, 54%
HSV	340°, 66%, 81%
XYZ	31.0168, 18.8835, 18.2298
YIQ	116.0930, 67.2070, 43.0390

# Conversions

## Conversions Part 2

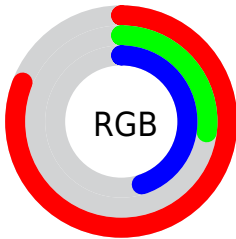
<b>Format</b>	<b>Color</b>
<b>R<sub>YB</sub></b>	207, 70, 115
Decimal	13583987
CIE <sub>Lab</sub>	50.55, 57.38, 4.51
CIE <sub>LCh</sub>	51, 57.557, 4.496
Yxy	18.8835, 0.4553, 0.2772
Android (android.graphics.Color)	4291774067 (0xFFCF4673)
YUV	116.0930, -0.5388, 79.7254
Hunter-Lab	43.4552, 51.3606, 5.5460

# Details

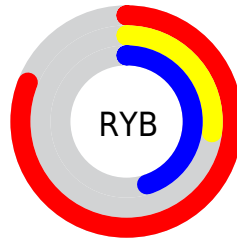
The Decimal color **13583987** is a dark color, and the websafe version is hex **CC3366**. The color can be described as dark muted rose. A complement of this color would be **4640674**, and the grayscale version is **7631988**.

A 20% lighter version of the original color is **16744103**, and **9699395** is the 20% darker color. If you saturate the color by 10%, you get **13578597**, and if you desaturate by 10%, it is **13589377**.

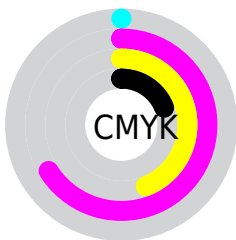
# Distribution



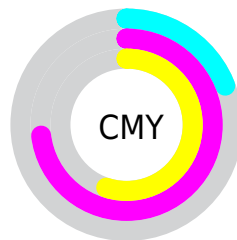
- Red (81%)
- Green (27%)
- Blue (45%)



- Red (81%)
- Yellow (27%)
- Blue (45%)



- Cyan (0%)
- Magenta (66%)
- Yellow (44%)
- Black (19%)



- Cyan (19%)
- Magenta (73%)
- Yellow (55%)

# Brightness & Saturation Gradients

These gradients show how the Decimal color 13583987 changes by changing the brightness by 10 percent. The first figure shows a shift by +10% for each color and the second figure -10%.

Similar to the brightness gradients but the following saturation gradients show a change of the Decimal color 13583987 by changing the saturation by 10% instead.



 13583987  13583987

16777215  11609947

 16744103  9699395

 16751298  7798829

 16758494  5898265

 16765946  4194307

 16773631  1966081

 0

 13583987  13583987

 13578597  13589377

 13573463

 13594511

 13568073

 13599901

 13566020

 13605291

 13610425

 13615814

 13621204

 13626594

 13631472

# Harmonies

## Analogous

The Analogous color harmony consists of three colors that are next to each other on the color wheel.



12145059



13583987



13259076

# Triad

The Triadic color harmony groups three colors that are evenly spaced from another and form a triangle on the color wheel.



13583987



5670173



35025

# Complementary

The Complementary color scheme is a pair of colors which are on the opposite of each other on the color wheel.



13583987



4640674

# Split Complementary

Split-complementary colors differ from the complementary color scheme. The scheme consists of three colors, the original color and two neighbors of the complement color.



36527



13583987



35916

# Square

The Square scheme is like the rectangle color scheme, but the four colors are evenly spaced on the color wheel.



13583987



9009152



36735



31963

# Rectangle

The Rectangle color scheme consists of four colors that form a rectangle on the color wheel.



13583987



12279591



36735



35784



# Sweetspot

The Sweet Spot groups the original color and five complimentary colors.



13583987



16764125



10569423



8413547



0



8421504



# Same Dimension

The Same Dimension uses a secret algorithm to generate beautiful new colors.



13583987



16725624



13589830



6905442



11010103



2686989



# Inverse Universe

The Inverse Universe completely reimagines the original color for something new.



13583987



16725624



4634831



6905442



11010103



2686989



# Previews

## White Background



This preview shows how the Decimal color 13583987 looks on a white background.

## Color Contrast Check

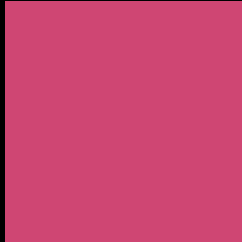
Large Text (above 18pt) WCAG AA ✓ Pass

Any Text WCAG AA × Fail

Large Text (above 18pt) WCAG AAA × Fail

Any Text WCAG AAA × Fail

# Black Background



This preview shows how the Decimal color 13583987 looks on a black background.

## Color Contrast Check

Large Text (above 18pt) WCAG AA ✓ Pass

Any Text WCAG AA ✓ Pass

Large Text (above 18pt) WCAG AAA ✓ Pass

Any Text WCAG AAA × Fail

If you want to check with other color combinations, try the [Color Contrast Checker](#).



## Decimal 13583987 Background



This preview shows how black text looks on a background with the Decimal color 13583987.

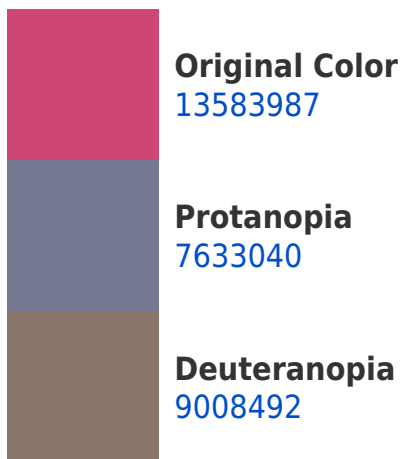


This preview shows how white text looks on a background with the Decimal color 13583987.

# Color Blindness Simulation

Color vision deficiency is a very complex topic, and I could not describe the different causes any better than Wikipedia does, so if you want to learn more, you should check out their [article about color blindness](#).

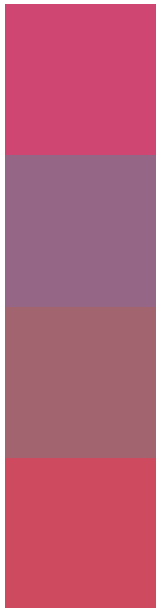
## Dichromacy





**Tritanopia**  
13454674

# Trichromacy



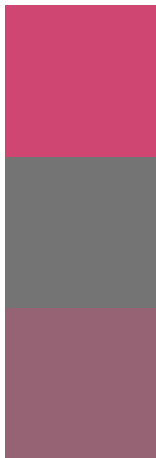
**Original Color**  
13583987

**Protanomaly**  
9791109

**Deuteranomaly**  
10642543

**Tritanomaly**  
13519454

# Monochromacy



**Original Color**  
13583987

**Achromatopsia**  
7631988

**Achromatomaly**  
9790324

# CSS Examples

## Text

The CSS property to change the color of the text to Decimal 13583987 is called "color". The color property can be set on classes, ids or directly on the HTML element.

This example shows how text in the color #CF4673 looks like.

```
.text, #text, p{  
  color:#CF4673  
}
```

If you want to add a text shadow in that color use the text-shadow property, you can generate a text shadow directly with our [CSS Text Shadow Generator](#).

Here you see how black text with a 4 pixel #CF4673 colored shadow looks like.

```
.shadow{ text-shadow: 4px 4px 2px #CF4673
}
```

## Border

The CSS property to change the border of an element to Decimal 13583987 is called "border". The border property can be set on classes, ids or directly on the HTML element.

This example shows the color as border, it can be applied via the CSS property "border" or "border-color".

```
.border, #border, table{ border:4px solid
#CF4673 }
```

If only the border color should be changed use the property `border-color`.

```
.border{ border-color:#CF4673 }
```

If you want to add a box shadow in that color use:

Here you see how a box with a 4 pixel #CF4673 colored shadow looks like.

```
.boxshadow{ -moz-box-shadow:4px 4px 4px  
4px #CF4673; -webkit-box-shadow:4px 4px  
4px 4px #CF4673; box-shadow:4px 4px 4px  
4px #CF4673 }
```

# Background

The CSS property to change the background color of an element to Decimal 13583987 is called "background". The background property can be set on classes, ids or directly on the HTML element.

```
.background, #background, body{  
background:#CF4673 }
```

If only the background color should be changed can be used:

```
.background{ background-color:#CF4673 }
```

This example shows the color as background, it is applied via the CSS property "background".

To optimize and compress your CSS code, you can use our [online CSS compressor and optimizer](#) based on csstidy. If you want to create a linear or radial gradient as background or border, check our [CSS Gradient Generator](#).



Hey! You found this booklet interesting? Support Converting Colors with the new Membership Option!

The pro membership hides all ads, plus gives you double the colors in the color bucket, and more awesome pro features!

**[Learn more, Memberships starting at \\$2.50/m!](#)**

**Follow me  
on Twitter!**

@ConvertingColor