

Converting Colors

Decimal(13596572)

Have a look what the booklet for
Decimal(13596572) contains.

| | |
|--|----|
| Decimal(13596572) | 3 |
| <i>Conversions</i> | 4 |
| <i>Details</i> | 6 |
| <i>Harmonies</i> | 11 |
| <i>Previews</i> | 23 |
| <i>Color Blindness Simulation</i> | 26 |
| <i>CSS Examples</i> | 29 |

Color

Decimal(13596572)

Conversions

Conversions Part 1

| Format | Color |
|---------------|----------------------------|
| Hex | CF779C |
| RGB | 207, 119, 156 |
| RGB Percent | 81%, 47%, 61% |
| CMY | 0.1882, 0.5333, 0.3882 |
| CMYK | 0.00, 0.43, 0.25, 0.19 |
| HSL | 335°, 48%, 64% |
| HSV | 335°, 43%, 81% |
| XYZ | 38.3297, 28.8593, 35.0027 |
| YIQ | 149.5300, 40.5710, 30.1630 |

Conversions

Conversions Part 2

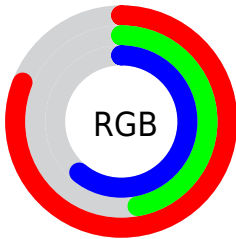
| Format | Color |
|-------------------------------------|------------------------------|
| R _Y B | 207, 119, 156 |
| Decimal | 13596572 |
| CIE Lab | 60.66, 38.99, -4.84 |
| CIE LCh | 61, 39.285, 352.924 |
| Yxy | 28.8593, 0.3751, 0.2824 |
| Android (android.graphics.Color) | 4291786652 (0xFFCF779C) |
| YUV | 149.5300, 3.1897, 50.4012 |
| Hunter-Lab | 53.7209, 33.3476, -1.0267 |

Details

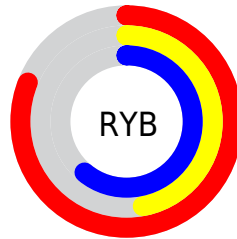
The Decimal color **13596572** is a light color, and the websafe version is hex **CC6699**. A complement of this color would be **7851946**, and the grayscale version is **9803157**.

A 20% lighter version of the original color is **16756178**, and **9913449** is the 20% darker color. If you saturate the color by 10%, you get **13591184**, and if you desaturate by 10%, it is **13601960**.

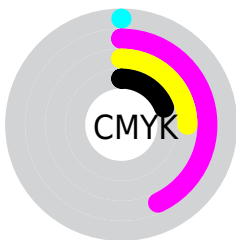
Distribution



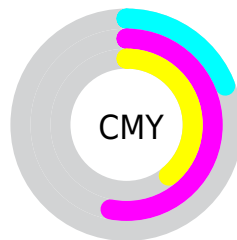
- Red (81%)
- Green (47%)
- Blue (61%)



- Red (81%)
- Yellow (47%)
- Blue (61%)



- Cyan (0%)
- Magenta (43%)
- Yellow (25%)
- Black (19%)



- Cyan (19%)
- Magenta (53%)
- Yellow (39%)

Brightness & Saturation Gradients

These gradients show how the Decimal color 13596572 changes by changing the brightness by 10 percent. The first figure shows a shift by +10% for each color and the second figure -10%.

Similar to the brightness gradients but the following saturation gradients show a change of the Decimal color 13596572 by changing the saturation by 10% instead.

 13596572

 13596572

16777215

 11689346

 16756178

 9913449

 16763375

 8071761

 16770559

 6360890

 4653092

 3211279

 0

 13596572

 13596572

 13591184

 13601960

 13586052

 13607092

 13580664

 13612480

 13575276

 13617868

 13570144

 13623256

 13566039

 13628388

 13631472

 13631484

 13631487

Harmonies

Analogous

The Analogous color harmony consists of three colors that are next to each other on the color wheel.



11960252



13596572



13990009

Triad

The Triadic color harmony groups three colors that are evenly spaced from another and form a triangle on the color wheel.



13596572



9279569



41161

Complementary

The Complementary color scheme is a pair of colors which are on the opposite of each other on the color wheel.



13596572



7851946

Split Complementary

Split-complementary colors differ from the complementary color scheme. The scheme consists of three colors, the original color and two neighbors of the complement color.



42156



13596572



6660199

Square

The Square scheme is like the rectangle color scheme, but the four colors are evenly spaced on the color wheel.



13596572



11504973



2991241



4823255

Rectangle

The Rectangle color scheme consists of four colors that form a rectangle on the color wheel.



13596572



13532517



2991241



41664

Sweetspot

The Sweet Spot groups the original color and five complimentary colors.



13596572



16768748



11106255



8416116



0



8421504

Same Dimension

The Same Dimension uses a secret algorithm to generate beautiful new colors.



13596572



16743860



13598071



6905442



11010119



2686993

Inverse Universe

The Inverse Universe completely reimagines the original color for something new.



13596572



16743860



7850447



6905442



11010119



2686993

Previews

White Background



This preview shows how the Decimal color 13596572 looks on a white background.

Color Contrast Check

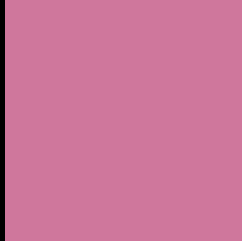
Large Text (above 18pt) WCAG AA ✓ Pass

Any Text WCAG AA × Fail

Large Text (above 18pt) WCAG AAA × Fail

Any Text WCAG AAA × Fail

Black Background



This preview shows how the Decimal color 13596572 looks on a black background.

Color Contrast Check

Large Text (above 18pt) WCAG AA ✓ Pass

Any Text WCAG AA ✓ Pass

Large Text (above 18pt) WCAG AAA ✓ Pass

Any Text WCAG AAA × Fail

If you want to check with other color combinations, try the [Color Contrast Checker](#).

Decimal 13596572 Background



This preview shows how black text looks on a background with the Decimal color 13596572.




This preview shows how white text looks on a background with the Decimal color 13596572.

Color Blindness Simulation

Color vision deficiency is a very complex topic, and I could not describe the different causes any better than Wikipedia does, so if you want to learn more, you should check out their [article about color blindness](#).

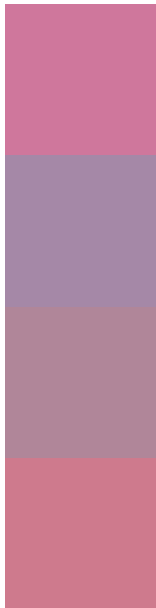
Dichromacy





Tritanopia
13466500

Trichromacy



Original Color
13596572

Protanomaly
10848423

Deuteranomaly
11568793

Tritanomaly
13531789

Monochromacy



Original Color
13596572

Achromatopsia
9868950

Achromatomaly
11242392

CSS Examples

Text

The CSS property to change the color of the text to Decimal 13596572 is called "color". The color property can be set on classes, ids or directly on the HTML element.

This example shows how text in the color #CF779C looks like.

```
.text, #text, p{  
    color:#CF779C  
}
```

If you want to add a text shadow in that color use the text-shadow property, you can generate a text shadow directly with our [CSS Text Shadow Generator](#).

Here you see how black text with a 4 pixel #CF779C colored shadow looks like.

```
.shadow{ text-shadow: 4px 4px 2px #CF779C
}
```

Border

The CSS property to change the border of an element to Decimal 13596572 is called "border". The border property can be set on classes, ids or directly on the HTML element.

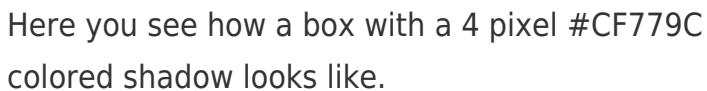
This example shows the color as border, it can be applied via the CSS property "border" or "border-color".

```
.border, #border, table{ border:4px solid
#CF779C }
```

If only the border color should be changed use the property `border-color`.

```
.border{ border-color:#CF779C }
```

If you want to add a box shadow in that color use:



Here you see how a box with a 4 pixel #CF779C colored shadow looks like.

```
.boxshadow{ -moz-box-shadow:4px 4px 4px  
4px #CF779C; -webkit-box-shadow:4px 4px  
4px 4px #CF779C; box-shadow:4px 4px 4px  
4px #CF779C }
```

Background

The CSS property to change the background color of an element to Decimal 13596572 is called "background". The background property can be set on classes, ids or directly on the HTML element.

```
.background, #background, body{  
background:#CF779C }
```

If only the background color should be changed can be used:

```
.background{ background-color:#CF779C }
```

This example shows the color as background, it is applied via the CSS property "background".

To optimize and compress your CSS code, you can use our [online CSS compressor and optimizer](#) based on csstidy. If you want to create a linear or radial gradient as background or border, check our [CSS Gradient Generator](#).

Hey! You found this booklet interesting? Support Converting Colors with the new Membership Option!

The pro membership hides all ads, plus gives you double the colors in the color bucket, and more awesome pro features!

[Learn more, Memberships starting at \\$2.50/m!](#)

**Follow me
on Twitter!**

@ConvertingColor