

# Converting Colors

Decimal(13600905)

Have a look what the booklet for  
Decimal(13600905) contains.

<b>Decimal(13600905)</b> .....	3
<i><b>Conversions</b></i> .....	4
<i><b>Details</b></i> .....	6
<i><b>Harmonies</b></i> .....	11
<i><b>Previews</b></i> .....	23
<i><b>Color Blindness Simulation</b></i> .....	26
<i><b>CSS Examples</b></i> .....	29

# **Color**

**Decimal(13600905)**

# Conversions

## Conversions Part 1

Format	Color
Hex	CF8889
RGB	207, 136, 137
RGB Percent	81%, 53%, 54%
CMY	0.1882, 0.4667, 0.4627
CMYK	0.00, 0.34, 0.34, 0.19
HSL	359°, 43%, 67%
HSV	359°, 34%, 81%
XYZ	39.0516, 32.6799, 27.9165
YIQ	157.3430, 41.9950, 15.3630

# Conversions

## Conversions Part 2

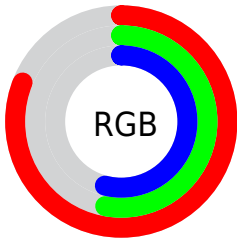
<b>Format</b>	<b>Color</b>
<b>R<sub>YB</sub></b>	207, 136, 137
Decimal	13600905
CIE <sub>Lab</sub>	63.90, 27.31, 10.70
CIE <sub>LCh</sub>	64, 29.332, 21.402
Yxy	32.6799, 0.3919, 0.3280
Android (android.graphics.Color)	4291790985 (0xFFCF8889)
YUV	157.3430, -10.0291, 43.5492
Hunter-Lab	57.1663, 21.8965, 11.0628

# Details

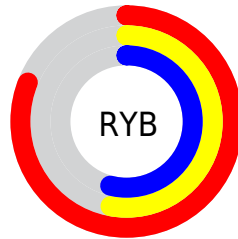
The Decimal color **13600905** is a light color, and the websafe version is hex **CC9999**. A complement of this color would be **8966094**, and the grayscale version is **10329501**.

A 20% lighter version of the original color is **16760510**, and **9917783** is the 20% darker color. If you saturate the color by 10%, you get **13595509**, and if you desaturate by 10%, it is **13606301**.

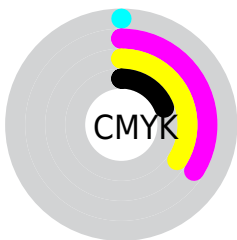
# Distribution



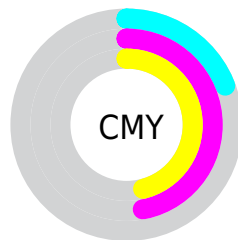
- Red (81%)
- Green (53%)
- Blue (54%)



- Red (81%)
- Yellow (53%)
- Blue (54%)



- Cyan (0%)
- Magenta (34%)
- Yellow (34%)
- Black (19%)



- Cyan (19%)
- Magenta (47%)
- Yellow (46%)

# Brightness & Saturation Gradients

These gradients show how the Decimal color 13600905 changes by changing the brightness by 10 percent. The first figure shows a shift by +10% for each color and the second figure -10%.

Similar to the brightness gradients but the following saturation gradients show a change of the Decimal color 13600905 by changing the saturation by 10% instead.



 13600905

 13600905

16777215

 11759216

 16760510

 9917783

 16767706


 8076608

 16775159

 6366762

 4656662

 3145728

 196608

 0

 13600905

 13600905

 13595509

 13606301

 13590368

 13611442

 13584972

 13616838

 13579575

 13622235

 13574435

 13627631

 13569039

 13631487

 13565955

# Harmonies

## Analogous

The Analogous color harmony consists of three colors that are next to each other on the color wheel.



13207715



13600905



13078131

# Triad

The Triadic color harmony groups three colors that are evenly spaced from another and form a triangle on the color wheel.



13600905



8168825



7184590

# Complementary

The Complementary color scheme is a pair of colors which are on the opposite of each other on the color wheel.



13600905



8966094

# Split Complementary

Split-complementary colors differ from the complementary color scheme. The scheme consists of three colors, the original color and two neighbors of the complement color.



4957891



13600905



6138258

# Square

The Square scheme is like the rectangle color scheme, but the four colors are evenly spaced on the color wheel.



13600905



10133354



4630957



9738187

# Rectangle

The Rectangle color scheme consists of four colors that form a rectangle on the color wheel.



13600905



12293226



4630957



6333132

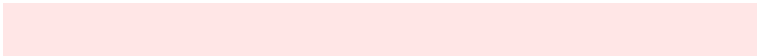


# Sweetspot

The Sweet Spot groups the original color and five complimentary colors.



13600905



16770790



13535439



8417392



0



8421504



# Same Dimension

The Same Dimension uses a secret algorithm to generate beautiful new colors.



13600905



16750232



13609608



6905438



11010050



2686977



# Inverse Universe

The Inverse Universe completely reimagines the original color for something new.



13600905



16750232



8957391



6905438



11010050

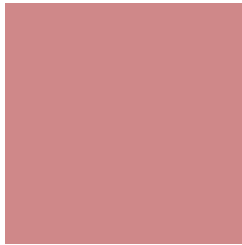


2686977



# Previews

## White Background



This preview shows how the Decimal color 13600905 looks on a white background.

## Color Contrast Check

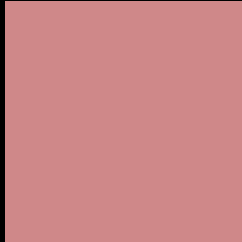
Large Text (above 18pt) WCAG AA × Fail

Any Text WCAG AA × Fail

Large Text (above 18pt) WCAG AAA × Fail

Any Text WCAG AAA × Fail

# Black Background



This preview shows how the Decimal color 13600905 looks on a black background.

## Color Contrast Check

Large Text (above 18pt) WCAG AA ✓ Pass

Any Text WCAG AA ✓ Pass

Large Text (above 18pt) WCAG AAA ✓ Pass

Any Text WCAG AAA ✓ Pass

If you want to check with other color combinations, try the [Color Contrast Checker](#).



## Decimal 13600905 Background



This preview shows how black text looks on a background with the Decimal color 13600905.



This preview shows how white text looks on a background with the Decimal color 13600905.

# Color Blindness Simulation

Color vision deficiency is a very complex topic, and I could not describe the different causes any better than Wikipedia does, so if you want to learn more, you should check out their [article about color blindness](#).


## Dichromacy



**Original Color**  
13600905

**Protanopia**  
10525587

**Deuteranopia**  
11703687



**Tritanopia**  
13666193

# Trichromacy



**Original Color**  
13600905

**Protanomaly**  
11637903

**Deuteranomaly**  
12423304

**Tritanomaly**  
13666190

# Monochromacy



**Original Color**  
13600905

**Achromatopsia**  
10329501

**Achromatomaly**  
11507094

# CSS Examples

## Text

The CSS property to change the color of the text to Decimal 13600905 is called "color". The color property can be set on classes, ids or directly on the HTML element.

This example shows how text in the color #CF8889 looks like.

```
.text, #text, p{  
    color:#CF8889  
}
```

If you want to add a text shadow in that color use the text-shadow property, you can generate a text shadow directly with our [CSS Text Shadow Generator](#).

Here you see how black text with a 4 pixel #CF8889 colored shadow looks like.

```
.shadow{ text-shadow: 4px 4px 2px #CF8889
}
```

## Border

The CSS property to change the border of an element to Decimal 13600905 is called "border". The border property can be set on classes, ids or directly on the HTML element.

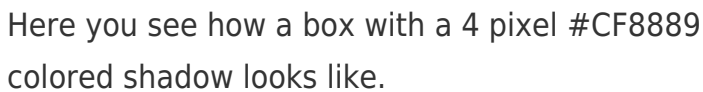
This example shows the color as border, it can be applied via the CSS property "border" or "border-color".

```
.border, #border, table{ border:4px solid
#CF8889 }
```

If only the border color should be changed use the property `border-color`.

```
.border{ border-color:#CF8889 }
```

If you want to add a box shadow in that color use:

A rectangular box with a 4px red shadow. The box is white with a thin red border and a red shadow. The shadow is a 4px wide, 4px high, 4px offset red box. The text inside the box is "Here you see how a box with a 4 pixel #CF8889 colored shadow looks like." data-bbox="137 528 878 605"/>

Here you see how a box with a 4 pixel #CF8889 colored shadow looks like.

```
.boxshadow{ -moz-box-shadow:4px 4px 4px  
4px #CF8889; -webkit-box-shadow:4px 4px  
4px 4px #CF8889; box-shadow:4px 4px 4px  
4px #CF8889 }
```

# Background

The CSS property to change the background color of an element to Decimal 13600905 is called "background". The background property can be set on classes, ids or directly on the HTML element.

```
.background, #background, body{  
background:#CF8889 }
```

If only the background color should be changed can be used:

```
.background{ background-color:#CF8889 }
```

This example shows the color as background, it is applied via the CSS property "background".

To optimize and compress your CSS code, you can use our [online CSS compressor and optimizer](#) based on csstidy. If you want to create a linear or radial gradient as background or border, check our [CSS Gradient Generator](#).



Hey! You found this booklet interesting? Support Converting Colors with the new Membership Option!

The pro membership hides all ads, plus gives you double the colors in the color bucket, and more awesome pro features!

**[Learn more, Memberships starting at \\$2.50/m!](#)**

**Follow me  
on Twitter!**

@ConvertingColor