

Converting Colors

Decimal(13602166)

Have a look what the booklet for
Decimal(13602166) contains.

Decimal(13602166)	3
<i>Conversions</i>	4
<i>Details</i>	6
<i>Harmonies</i>	11
<i>Previews</i>	23
<i>Color Blindness Simulation</i>	26
<i>CSS Examples</i>	29

Color

Decimal(13602166)

Conversions

Conversions Part 1

Format	Color
Hex	CF8D76
RGB	207, 141, 118
RGB Percent	81%, 55%, 46%
CMY	0.1882, 0.4471, 0.5373
CMYK	0.00, 0.32, 0.43, 0.19
HSL	16°, 48%, 64%
HSV	16°, 43%, 81%
XYZ	38.5270, 33.6232, 21.5989
YIQ	158.1120, 46.7190, 6.8390

Conversions

Conversions Part 2

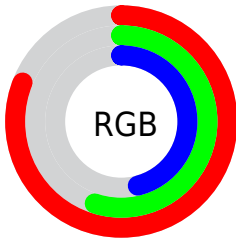
Format	Color
R_{YB}	207, 149, 118
Decimal	13602166
CIE Lab	64.66, 22.35, 22.43
CIE LCh	65, 31.669, 45.098
Yxy	33.6232, 0.4110, 0.3587
Android (android.graphics.Color)	4291792246 (0xFFCF8D76)
YUV	158.1120, -19.7752, 42.8748
Hunter-Lab	57.9855, 17.1253, 18.5051

Details

The Decimal color **13602166** is a light color, and the websafe version is hex **CC9966**. A complement of this color would be **7780559**, and the grayscale version is **10395294**.

A 20% lighter version of the original color is **16761770**, and **9853509** is the 20% darker color. If you saturate the color by 10%, you get **13598305**, and if you desaturate by 10%, it is **13606027**.

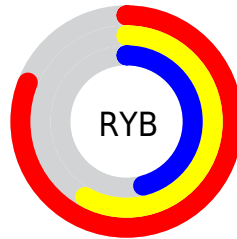
Distribution



Red (81%)

Green (55%)

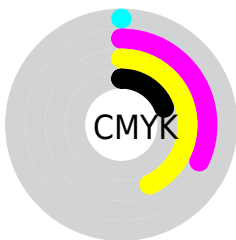
Blue (46%)



Red (81%)

Yellow (58%)

Blue (46%)

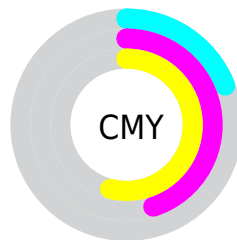


Cyan (0%)

Magenta (32%)

Yellow (43%)

Black (19%)



Cyan (19%)

Magenta (45%)

Yellow (54%)

Brightness & Saturation Gradients

These gradients show how the Decimal color 13602166 changes by changing the brightness by 10 percent. The first figure shows a shift by +10% for each color and the second figure -10%.

Similar to the brightness gradients but the following saturation gradients show a change of the Decimal color 13602166 by changing the saturation by 10% instead.

 13602166  13602166

16777215  11694941

 16761770  9853509

 16768966  8077871

 16776418  6302490

16777214  4592896

 2949120

 0

 13602166  13602166

 13598305  13606027

 13594189

 13610143

 13590328

 13614004

 13586467

 13617865

 13582351

 13621982

 13579520

 13625842

 13629695

 13631487

Harmonies

Analogous

The Analogous color harmony consists of three colors that are next to each other on the color wheel.



13994127



13602166



12424806

Triad

The Triadic color harmony groups three colors that are evenly spaced from another and form a triangle on the color wheel.



13602166



6335373



9214931

Complementary

The Complementary color scheme is a pair of colors which are on the opposite of each other on the color wheel.



13602166



7780559

Split Complementary

Split-complementary colors differ from the complementary color scheme. The scheme consists of three colors, the original color and two neighbors of the complement color.



6333651



13602166



4238507

Square

The Square scheme is like the rectangle color scheme, but the four colors are evenly spaced on the color wheel.



13602166



8562548



3975876



11702469

Rectangle

The Rectangle color scheme consists of four colors that form a rectangle on the color wheel.



13602166



11246948



3975876



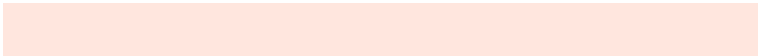
8298197

Sweetspot

The Sweet Spot groups the original color and five complimentary colors.



13602166



16770782



13596345



8417387



0



8421504

Same Dimension

The Same Dimension uses a secret algorithm to generate beautiful new colors.



13602166



16751994



13613430



6906206



11021056



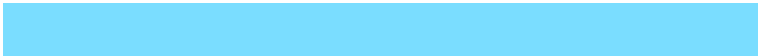
2689792

Inverse Universe

The Inverse Universe completely reimagines the original color for something new.



7780559



8052223



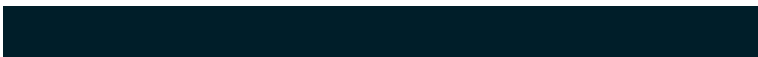
7769295



6186601



32168



7721

Previews

White Background



This preview shows how the Decimal color 13602166 looks on a white background.

Color Contrast Check

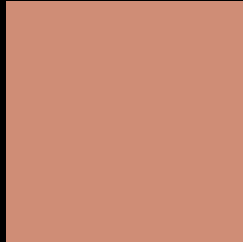
Large Text (above 18pt) WCAG AA × Fail

Any Text WCAG AA × Fail

Large Text (above 18pt) WCAG AAA × Fail

Any Text WCAG AAA × Fail

Black Background



This preview shows how the Decimal color 13602166 looks on a black background.

Color Contrast Check

Large Text (above 18pt) WCAG AA ✓ Pass

Any Text WCAG AA ✓ Pass

Large Text (above 18pt) WCAG AAA ✓ Pass

Any Text WCAG AAA ✓ Pass

If you want to check with other color combinations, try the [Color Contrast Checker](#).

Decimal 13602166 Background



This preview shows how black text looks on a background with the Decimal color 13602166.



This preview shows how white text looks on a background with the Decimal color 13602166.

Color Blindness Simulation

Color vision deficiency is a very complex topic, and I could not describe the different causes any better than Wikipedia does, so if you want to learn more, you should check out their [article about color blindness](#).

Dichromacy





Tritanopia
13797779

Trichromacy



Original Color
13602166

Protanomaly
11966330

Deuteranomaly
12751733

Tritanomaly
13732488

Monochromacy



Original Color
13602166

Achromatopsia
10395294

Achromatomaly
11573391

CSS Examples

Text

The CSS property to change the color of the text to Decimal 13602166 is called "color". The color property can be set on classes, ids or directly on the HTML element.

This example shows how text in the color #CF8D76 looks like.

```
.text, #text, p{  
    color:#CF8D76  
}
```

If you want to add a text shadow in that color use the text-shadow property, you can generate a text shadow directly with our [CSS Text Shadow Generator](#).

Here you see how black text with a 4 pixel #CF8D76 colored shadow looks like.

```
.shadow{ text-shadow: 4px 4px 2px #CF8D76
}
```

Border

The CSS property to change the border of an element to Decimal 13602166 is called "border". The border property can be set on classes, ids or directly on the HTML element.

This example shows the color as border, it can be applied via the CSS property "border" or "border-color".

```
.border, #border, table{ border:4px solid
#CF8D76 }
```

If only the border color should be changed use the property `border-color`.

```
.border{ border-color:#CF8D76 }
```

If you want to add a box shadow in that color use:

Here you see how a box with a 4 pixel #CF8D76 colored shadow looks like.

```
.boxshadow{ -moz-box-shadow:4px 4px 4px  
4px #CF8D76; -webkit-box-shadow:4px 4px  
4px 4px #CF8D76; box-shadow:4px 4px 4px  
4px #CF8D76 }
```

Background

The CSS property to change the background color of an element to Decimal 13602166 is called "background". The background property can be set on classes, ids or directly on the HTML element.

```
.background, #background, body{  
background:#CF8D76 }
```

If only the background color should be changed can be used:

```
.background{ background-color:#CF8D76 }
```

This example shows the color as background, it is applied via the CSS property "background".

To optimize and compress your CSS code, you can use our [online CSS compressor and optimizer](#) based on csstidy. If you want to create a linear or radial gradient as background or border, check our [CSS Gradient Generator](#).

Hey! You found this booklet interesting? Support Converting Colors with the new Membership Option!

The pro membership hides all ads, plus gives you double the colors in the color bucket, and more awesome pro features!

[Learn more, Memberships starting at \\$2.50/m!](#)

**Follow me
on Twitter!**

@ConvertingColor