

Converting Colors

Decimal(13602939)

Have a look what the booklet for
Decimal(13602939) contains.

Decimal(13602939)	3
<i>Conversions</i>	4
<i>Details</i>	6
<i>Harmonies</i>	11
<i>Previews</i>	23
<i>Color Blindness Simulation</i>	26
<i>CSS Examples</i>	29

Color

Decimal(13602939)

Conversions

Conversions Part 1

Format	Color
Hex	CF907B
RGB	207, 144, 123
RGB Percent	81%, 56%, 48%
CMY	0.1882, 0.4353, 0.5176
CMYK	0.00, 0.30, 0.41, 0.19
HSL	15°, 47%, 65%
HSV	15°, 41%, 81%
XYZ	39.2805, 34.6420, 23.3552
YIQ	160.4430, 44.2890, 6.8250

Conversions

Conversions Part 2

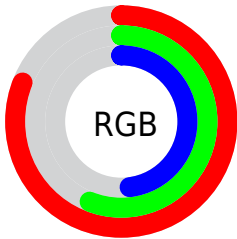
Format	Color
R _Y B	207, 151, 123
Decimal	13602939
CIE Lab	65.47, 21.27, 20.74
CIE LCh	65, 29.713, 44.274
Yxy	34.6420, 0.4038, 0.3561
Android (android.graphics.Color)	4291793019 (0xFFCF907B)
YUV	160.4430, -18.4594, 40.8305
Hunter-Lab	58.8574, 16.1276, 17.6734

Details

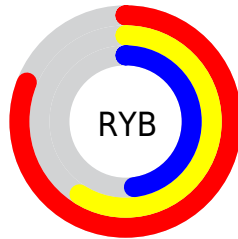
The Decimal color **13602939** is a light color, and the websafe version is hex **CC9999**. A complement of this color would be **8108751**, and the grayscale version is **10592673**.

A 20% lighter version of the original color is **16762544**, and **9854282** is the 20% darker color. If you saturate the color by 10%, you get **13598822**, and if you desaturate by 10%, it is **13607056**.

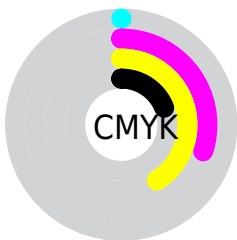
Distribution



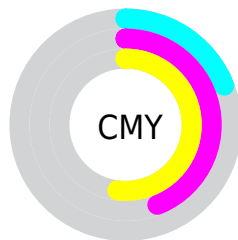
- Red (81%)
- Green (56%)
- Blue (48%)



- Red (81%)
- Yellow (59%)
- Blue (48%)



- Cyan (0%)
- Magenta (30%)
- Yellow (41%)
- Black (19%)



- Cyan (19%)
- Magenta (44%)
- Yellow (52%)

Brightness & Saturation Gradients

These gradients show how the Decimal color 13602939 changes by changing the brightness by 10 percent. The first figure shows a shift by +10% for each color and the second figure -10%.

Similar to the brightness gradients but the following saturation gradients show a change of the Decimal color 13602939 by changing the saturation by 10% instead.

 13602939

 13602939

16777215

 11695714

 16762544

 9854282

 16769739

 8078643

 16777191

 6303262

 4659206

 3015168

 327680

 0

 13602939

 13602939

 13598822

 13607056

 13594962

 13610916

 13590845

 13615033

 13586984

 13618894

 13582868

 13623011

 13579264

 13626871

 13630975

 13631487

Harmonies

Analogous

The Analogous color harmony consists of three colors that are next to each other on the color wheel.



13929363



13602939



12490860

Triad

The Triadic color harmony groups three colors that are evenly spaced from another and form a triangle on the color wheel.



13602939



6794640



9412050

Complementary

The Complementary color scheme is a pair of colors which are on the opposite of each other on the color wheel.



13602939



8108751

Split Complementary

Split-complementary colors differ from the complementary color scheme. The scheme consists of three colors, the original color and two neighbors of the complement color.



6792914



13602939



5090987

Square

The Square scheme is like the rectangle color scheme, but the four colors are evenly spaced on the color wheel.



13602939



8890488



4893635



11703493

Rectangle

The Rectangle color scheme consists of four colors that form a rectangle on the color wheel.



13602939



11444074



4893635



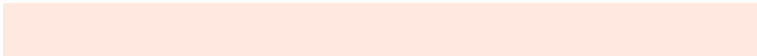
8495316

Sweetspot

The Sweet Spot groups the original color and five complimentary colors.



13602939



16771296



13597626



8417902



0



8421504

Same Dimension

The Same Dimension uses a secret algorithm to generate beautiful new colors.



13602939



16753026



13613691



6906206



11020800



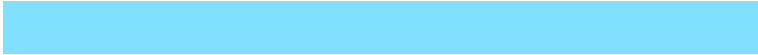
2689536

Inverse Universe

The Inverse Universe completely reimagines the original color for something new.



8108751



8577279



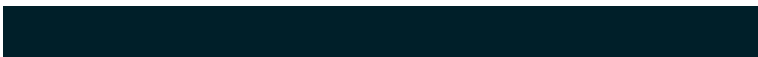
8097999



6186601



32424



7977

Previews

White Background



This preview shows how the Decimal color 13602939 looks on a white background.

Color Contrast Check

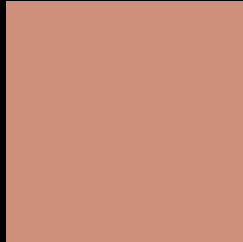
Large Text (above 18pt) WCAG AA × Fail

Any Text WCAG AA × Fail

Large Text (above 18pt) WCAG AAA × Fail

Any Text WCAG AAA × Fail

Black Background



This preview shows how the Decimal color 13602939 looks on a black background.

Color Contrast Check

Large Text (above 18pt) WCAG AA ✓ Pass

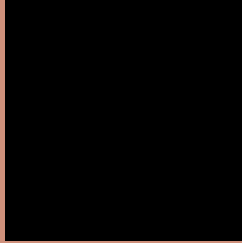
Any Text WCAG AA ✓ Pass

Large Text (above 18pt) WCAG AAA ✓ Pass

Any Text WCAG AAA ✓ Pass

If you want to check with other color combinations, try the [Color Contrast Checker](#).

Decimal 13602939 Background



This preview shows how black text looks on a background with the Decimal color 13602939.



This preview shows how white text looks on a background with the Decimal color 13602939.

Color Blindness Simulation

Color vision deficiency is a very complex topic, and I could not describe the different causes any better than Wikipedia does, so if you want to learn more, you should check out their [article about color blindness](#).

Dichromacy





Tritanopia
13798551

Trichromacy



Original Color
13602939

Protanomaly
12032639

Deuteranomaly
12752506

Tritanomaly
13733261

Monochromacy



Original Color
13602939

Achromatopsia
10526880

Achromatomaly
11639443

CSS Examples

Text

The CSS property to change the color of the text to Decimal 13602939 is called "color". The color property can be set on classes, ids or directly on the HTML element.

This example shows how text in the color #CF907B looks like.

```
.text, #text, p{  
    color:#CF907B  
}
```

If you want to add a text shadow in that color use the text-shadow property, you can generate a text shadow directly with our [CSS Text Shadow Generator](#).

Here you see how black text with a 4 pixel #CF907B colored shadow looks like.

```
.shadow{ text-shadow: 4px 4px 2px #CF907B
}
```

Border

The CSS property to change the border of an element to Decimal 13602939 is called "border". The border property can be set on classes, ids or directly on the HTML element.

This example shows the color as border, it can be applied via the CSS property "border" or "border-color".

```
.border, #border, table{ border:4px solid
#CF907B }
```

If only the border color should be changed use the property `border-color`.

```
.border{ border-color:#CF907B }
```

If you want to add a box shadow in that color use:

Here you see how a box with a 4 pixel #CF907B colored shadow looks like.

```
.boxshadow{ -moz-box-shadow:4px 4px 4px  
4px #CF907B; -webkit-box-shadow:4px 4px  
4px 4px #CF907B; box-shadow:4px 4px 4px  
4px #CF907B }
```

Background

The CSS property to change the background color of an element to Decimal 13602939 is called "background". The background property can be set on classes, ids or directly on the HTML element.

```
.background, #background, body{  
background:#CF907B }
```

If only the background color should be changed can be used:

```
.background{ background-color:#CF907B }
```

This example shows the color as background, it is applied via the CSS property "background".

To optimize and compress your CSS code, you can use our [online CSS compressor and optimizer](#) based on csstidy. If you want to create a linear or radial gradient as background or border, check our [CSS Gradient Generator](#).

Hey! You found this booklet interesting? Support Converting Colors with the new Membership Option!

The pro membership hides all ads, plus gives you double the colors in the color bucket, and more awesome pro features!

[Learn more, Memberships starting at \\$2.50/m!](#)

**Follow me
on Twitter!**

@ConvertingColor