

Converting Colors

Decimal(13604472)

Have a look what the booklet for
Decimal(13604472) contains.

Decimal(13604472)	3
<i>Conversions</i>	4
<i>Details</i>	6
<i>Harmonies</i>	11
<i>Previews</i>	23
<i>Color Blindness Simulation</i>	26
<i>CSS Examples</i>	29

Color

Decimal(13604472)

Conversions

Conversions Part 1

Format	Color
Hex	CF9678
RGB	207, 150, 120
RGB Percent	81%, 59%, 47%
CMY	0.1882, 0.4118, 0.5294
CMYK	0.00, 0.28, 0.42, 0.19
HSL	21°, 48%, 64%
HSV	21°, 42%, 81%
XYZ	40.0286, 36.4342, 22.6921
YIQ	163.6230, 43.6020, 2.7540

Conversions

Conversions Part 2

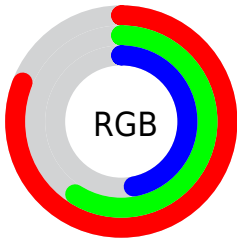
Format	Color
RYB	207, 166, 120
Decimal	13604472
CIELab	66.85, 17.67, 24.27
CIElCh	67, 30.020, 53.941
Yxy	36.4342, 0.4037, 0.3674
Android (android.graphics.Color)	4291794552 (0xFFCF9678)
YUV	163.6230, -21.5061, 38.0416
Hunter-Lab	60.3607, 12.7423, 19.9630

Details

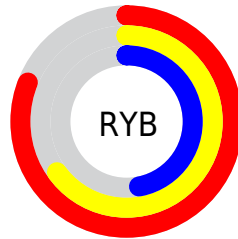
The Decimal color **13604472** is a light color, and the websafe version is hex **CC9966**. A complement of this color would be **7909839**, and the grayscale version is **10790052**.

A 20% lighter version of the original color is **16764076**, and **9921351** is the 20% darker color. If you saturate the color by 10%, you get **13600867**, and if you desaturate by 10%, it is **13608077**.

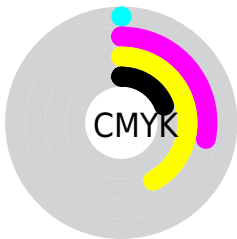
Distribution



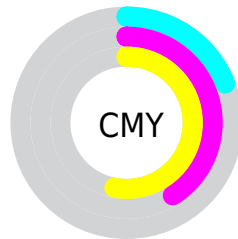
- Red (81%)
- Green (59%)
- Blue (47%)



- Red (81%)
- Yellow (65%)
- Blue (47%)



- Cyan (0%)
- Magenta (28%)
- Yellow (42%)
- Black (19%)



- Cyan (19%)
- Magenta (41%)
- Yellow (53%)

Brightness & Saturation Gradients

These gradients show how the Decimal color 13604472 changes by changing the brightness by 10 percent. The first figure shows a shift by +10% for each color and the second figure -10%.

Similar to the brightness gradients but the following saturation gradients show a change of the Decimal color 13604472 by changing the saturation by 10% instead.

 13604472  13604472

16777215  11697247

 16764076  9921351

 16771528  8080176

 16777188  6370331

 4660738

 3016960

 720896

 0

 13604472  13604472

 13600867

 13608077

 13597519

 13611425

 13593914

 13615030

 13590565

 13618379

 13586961

 13621983

 13584128

 13625332

 13628927

 13631487

Harmonies

Analogous

The Analogous color harmony consists of three colors that are next to each other on the color wheel.



14192782



13604472



12296045

Triad

The Triadic color harmony groups three colors that are evenly spaced from another and form a triangle on the color wheel.



13604472



6402460



10460884

Complementary

The Complementary color scheme is a pair of colors which are on the opposite of each other on the color wheel.



13604472



7909839

Split Complementary

Split-complementary colors differ from the complementary color scheme. The scheme consists of three colors, the original color and two neighbors of the complement color.



7841752



13604472



4960696

Square

The Square scheme is like the rectangle color scheme, but the four colors are evenly spaced on the color wheel.



13604472



8433282



5484237



12620995

Rectangle

The Rectangle color scheme consists of four colors that form a rectangle on the color wheel.



13604472



11117934



5484237



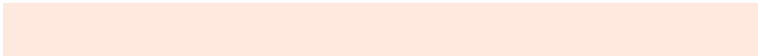
9609687

Sweetspot

The Sweet Spot groups the original color and five complimentary colors.



13604472



16771550



13596850



8417899



0



8421504

Same Dimension

The Same Dimension uses a secret algorithm to generate beautiful new colors.



13604472



16755584



13615480



6906462



11024896



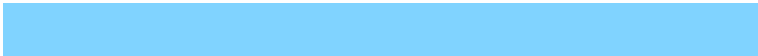
2690560

Inverse Universe

The Inverse Universe completely reimagines the original color for something new.



7909839



8442879



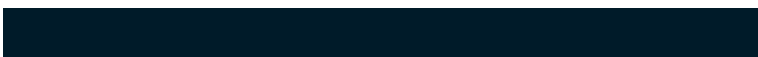
7899087



6186345



28328



6953

Previews

White Background



This preview shows how the Decimal color 13604472 looks on a white background.

Color Contrast Check

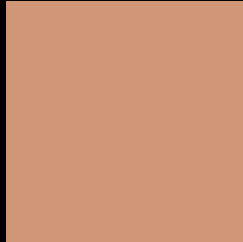
Large Text (above 18pt) WCAG AA × Fail

Any Text WCAG AA × Fail

Large Text (above 18pt) WCAG AAA × Fail

Any Text WCAG AAA × Fail

Black Background



This preview shows how the Decimal color 13604472 looks on a black background.

Color Contrast Check

Large Text (above 18pt) WCAG AA ✓ Pass

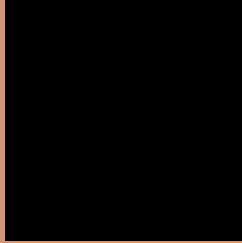
Any Text WCAG AA ✓ Pass

Large Text (above 18pt) WCAG AAA ✓ Pass

Any Text WCAG AAA ✓ Pass

If you want to check with other color combinations, try the [Color Contrast Checker](#).

Decimal 13604472 Background



This preview shows how black text looks on a background with the Decimal color 13604472.



This preview shows how white text looks on a background with the Decimal color 13604472.

Color Blindness Simulation

Color vision deficiency is a very complex topic, and I could not describe the different causes any better than Wikipedia does, so if you want to learn more, you should check out their [article about color blindness](#).


Dichromacy



Original Color
13604472

Protanopia
11445118

Deuteranopia
12688503



Tritanopia
13799836

Trichromacy



Original Color
13604472

Protanomaly
12230268

Deuteranomaly
13015671

Tritanomaly
13734799

Monochromacy



Original Color
13604472

Achromatopsia
10790052

Achromatomaly
11837332

CSS Examples

Text

The CSS property to change the color of the text to Decimal 13604472 is called "color". The color property can be set on classes, ids or directly on the HTML element.

This example shows how text in the color #CF9678 looks like.

```
.text, #text, p{  
    color:#CF9678  
}
```

If you want to add a text shadow in that color use the text-shadow property, you can generate a text shadow directly with our [CSS Text Shadow Generator](#).

Here you see how black text with a 4 pixel #CF9678 colored shadow looks like.

```
.shadow{ text-shadow: 4px 4px 2px #CF9678
}
```

Border

The CSS property to change the border of an element to Decimal 13604472 is called "border". The border property can be set on classes, ids or directly on the HTML element.

This example shows the color as border, it can be applied via the CSS property "border" or "border-color".

```
.border, #border, table{ border:4px solid
#CF9678 }
```

If only the border color should be changed use the property `border-color`.

```
.border{ border-color:#CF9678 }
```

If you want to add a box shadow in that color use:

Here you see how a box with a 4 pixel #CF9678 colored shadow looks like.

```
.boxshadow{ -moz-box-shadow:4px 4px 4px  
4px #CF9678; -webkit-box-shadow:4px 4px  
4px 4px #CF9678; box-shadow:4px 4px 4px  
4px #CF9678 }
```

Background

The CSS property to change the background color of an element to Decimal 13604472 is called "background". The background property can be set on classes, ids or directly on the HTML element.

```
.background, #background, body{  
background:#CF9678 }
```

If only the background color should be changed can be used:

```
.background{ background-color:#CF9678 }
```

This example shows the color as background, it is applied via the CSS property "background".

To optimize and compress your CSS code, you can use our [online CSS compressor and optimizer](#) based on csstidy. If you want to create a linear or radial gradient as background or border, check our [CSS Gradient Generator](#).

Hey! You found this booklet interesting? Support Converting Colors with the new Membership Option!

The pro membership hides all ads, plus gives you double the colors in the color bucket, and more awesome pro features!

[Learn more, Memberships starting at \\$2.50/m!](#)

**Follow me
on Twitter!**

@ConvertingColor