

Converting Colors

Decimal(13606789)

Have a look what the booklet for
Decimal(13606789) contains.

Decimal(13606789)	3
<i>Conversions</i>	4
<i>Details</i>	6
<i>Harmonies</i>	11
<i>Previews</i>	23
<i>Color Blindness Simulation</i>	26
<i>CSS Examples</i>	29

Color

Decimal(13606789)

Conversions

Conversions Part 1

Format	Color
Hex	CF9F85
RGB	207, 159, 133
RGB Percent	81%, 62%, 52%
CMY	0.1882, 0.3765, 0.4784
CMYK	0.00, 0.23, 0.36, 0.19
HSL	21°, 44%, 67%
HSV	21°, 36%, 81%
XYZ	42.3639, 39.7551, 27.6310
YIQ	170.3880, 36.9540, 2.0900

Conversions

Conversions Part 2

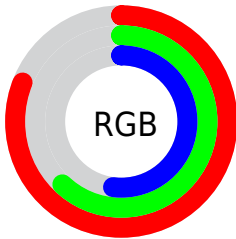
Format	Color
R_{YB}	207, 173, 133
Decimal	13606789
CIE _{Lab}	69.29, 14.28, 20.44
CIE _{LCh}	69, 24.935, 55.049
Yxy	39.7551, 0.3860, 0.3622
Android (android.graphics.Color)	4291796869 (0xFFCF9F85)
YUV	170.3880, -18.4323, 32.1087
Hunter-Lab	63.0517, 9.5923, 18.1536

Details

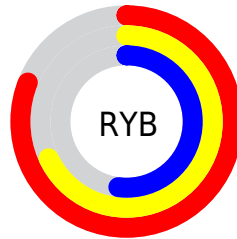
The Decimal color **13606789** is a light color, and the websafe version is hex **CC9999**. A complement of this color would be **8762831**, and the grayscale version is **11250603**.

A 20% lighter version of the original color is **16766650**, and **9923411** is the 20% darker color. If you saturate the color by 10%, you get **13603440**, and if you desaturate by 10%, it is **13610138**.

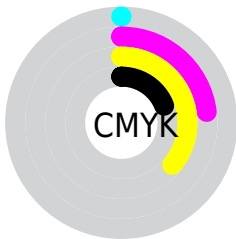
Distribution



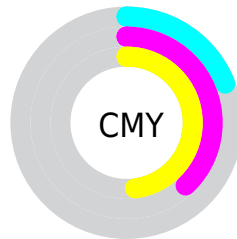
- Red (81%)
- Green (62%)
- Blue (52%)



- Red (81%)
- Yellow (68%)
- Blue (52%)



- Cyan (0%)
- Magenta (23%)
- Yellow (36%)
- Black (19%)



- Cyan (19%)
- Magenta (38%)
- Yellow (48%)

Brightness & Saturation Gradients

These gradients show how the Decimal color 13606789 changes by changing the brightness by 10 percent. The first figure shows a shift by +10% for each color and the second figure -10%.

Similar to the brightness gradients but the following saturation gradients show a change of the Decimal color 13606789 by changing the saturation by 10% instead.

 13606789

 13606789

16777215

 11765100

 16766650

 9923411

 16773846

 8147772

 16777202

 6437926

 4793873

 3215616

 1572865

 0

 13606789

 13606789

 13603440

 13610138

 13599836

 13613742

 13596487

 13617091

 13592882

 13620696

 13589534

 13624044

 13585929

 13627647

 13584640

 13630975

 13631487

Harmonies

Analogous

The Analogous color harmony consists of three colors that are next to each other on the color wheel.



14129815



13606789



12428924

Triad

The Triadic color harmony groups three colors that are evenly spaced from another and form a triangle on the color wheel.



13606789



7648932



11052498

Complementary

The Complementary color scheme is a pair of colors which are on the opposite of each other on the color wheel.



13606789



8762831

Split Complementary

Split-complementary colors differ from the complementary color scheme. The scheme consists of three colors, the original color and two neighbors of the complement color.



8957142



13606789



6796987

Square

The Square scheme is like the rectangle color scheme, but the four colors are evenly spaced on the color wheel.



13606789



9221007



7254733



12819907

Rectangle

The Rectangle color scheme consists of four colors that form a rectangle on the color wheel.



13606789



11447165



7254733



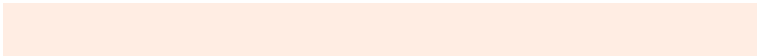
10332117

Sweetspot

The Sweet Spot groups the original color and five complimentary colors.



13606789



16772579



13600181



8418671



0



8421504

Same Dimension

The Same Dimension uses a secret algorithm to generate beautiful new colors.



13606789



16758929



13616261



6906462



11025152



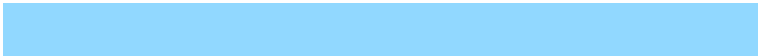
2690560

Inverse Universe

The Inverse Universe completely reimagines the original color for something new.



8762831



9558271



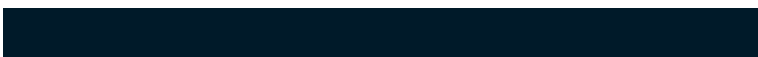
8753359



6186345



28072



6697

Previews

White Background



This preview shows how the Decimal color 13606789 looks on a white background.

Color Contrast Check

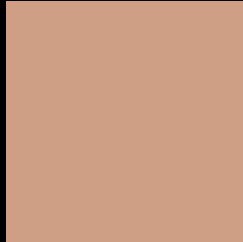
Large Text (above 18pt) WCAG AA × Fail

Any Text WCAG AA × Fail

Large Text (above 18pt) WCAG AAA × Fail

Any Text WCAG AAA × Fail

Black Background



This preview shows how the Decimal color 13606789 looks on a black background.

Color Contrast Check

Large Text (above 18pt) WCAG AA ✓ Pass

Any Text WCAG AA ✓ Pass

Large Text (above 18pt) WCAG AAA ✓ Pass

Any Text WCAG AAA ✓ Pass

If you want to check with other color combinations, try the [Color Contrast Checker](#).

Decimal 13606789 Background



This preview shows how black text looks on a background with the Decimal color 13606789.



This preview shows how white text looks on a background with the Decimal color 13606789.

Color Blindness Simulation

Color vision deficiency is a very complex topic, and I could not describe the different causes any better than Wikipedia does, so if you want to learn more, you should check out their [article about color blindness](#).

Dichromacy



Original Color
13606789

Protanopia
11839882

Deuteranopia
13017988



Tritanopia
13802150

Trichromacy



Original Color
13606789

Protanomaly
12494216

Deuteranomaly
13214340

Tritanomaly
13737114

Monochromacy



Original Color
13606789

Achromatopsia
11184810

Achromatomaly
12035741

CSS Examples

Text

The CSS property to change the color of the text to Decimal 13606789 is called "color". The color property can be set on classes, ids or directly on the HTML element.

This example shows how text in the color #CF9F85 looks like.

```
.text, #text, p{  
    color:#CF9F85  
}
```

If you want to add a text shadow in that color use the text-shadow property, you can generate a text shadow directly with our [CSS Text Shadow Generator](#).

Here you see how black text with a 4 pixel #CF9F85 colored shadow looks like.

```
.shadow{ text-shadow: 4px 4px 2px #CF9F85
}
```

Border

The CSS property to change the border of an element to Decimal 13606789 is called "border". The border property can be set on classes, ids or directly on the HTML element.

This example shows the color as border, it can be applied via the CSS property "border" or "border-color".

```
.border, #border, table{ border:4px solid
#CF9F85 }
```

If only the border color should be changed use the property `border-color`.

```
.border{ border-color:#CF9F85 }
```

If you want to add a box shadow in that color use:

Here you see how a box with a 4 pixel #CF9F85 colored shadow looks like.

```
.boxshadow{ -moz-box-shadow:4px 4px 4px  
4px #CF9F85; -webkit-box-shadow:4px 4px  
4px 4px #CF9F85; box-shadow:4px 4px 4px  
4px #CF9F85 }
```

Background

The CSS property to change the background color of an element to Decimal 13606789 is called "background". The background property can be set on classes, ids or directly on the HTML element.

```
.background, #background, body{  
background:#CF9F85 }
```

If only the background color should be changed can be used:

```
.background{ background-color:#CF9F85 }
```

This example shows the color as background, it is applied via the CSS property "background".

To optimize and compress your CSS code, you can use our [online CSS compressor and optimizer](#) based on csstidy. If you want to create a linear or radial gradient as background or border, check our [CSS Gradient Generator](#).

Hey! You found this booklet interesting? Support Converting Colors with the new Membership Option!

The pro membership hides all ads, plus gives you double the colors in the color bucket, and more awesome pro features!

[Learn more, Memberships starting at \\$2.50/m!](#)

**Follow me
on Twitter!**

@ConvertingColor